



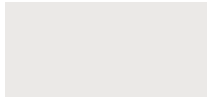
DURAbond
PRODUCTS LIMITED

Durex® Colour Selection Guide

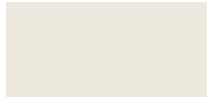




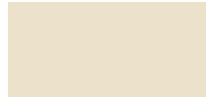
Durex® 1000 Series — Classics



1001-1L (Winter White)



1001-2M (Ivory White)



1001-3D (Buff Cream)



1002-1L (Delaware Putty)



1002-2M (Nomads Trail)



1002-3D (Earth Moss)



1003-1L (Carlisle Cream)



1003-2M (Serene)



1003-3D (Coffee Bean)



1004-1L (Tudor Beige)



1004-2M (Miadoro)



1004-3D (Sand Stone)



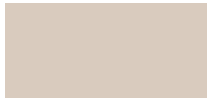
1005-1L (Almond Bisque)



1005-2M (Crème Brule)



1005-3D (Soft Leather)



1006-1L (Turret)



1006-2M (Putty)



1006-3D (Venture)



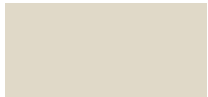
1007-1L (Cream Sash)



1007-2M (Fossil)



1007-3D (Wright Stone)



1008-1L (Smoke)



1008-2M (Grey Mirage)



1008-3D (Steel Harbour)



1009-1L (Winter Willow)



1009-2M (Limestone Grey)



1009-3D (Crownsville)



1010-1L (Mushroom)



1010-2M (Kent Sage)



1010-3D (Deep Walnut)



1011-1L (Camelot)



1011-2M (Countryside)



1011-3D (Falcon Brown)



1012-1L (Burma Beige)



1012-2M (Tiramisu)



1012-3D (Desert Cave)



1013-1L (White Dawn)



1013-2M (Seattle Beige)



1013-3D (Desert Trail)



1014-1L (Coastal Sand)



1014-2M (Durango)



1014-3D (Falcon's Leap)



1015-1L (Pearl Grey)



1015-2M (Hampshire Grey)



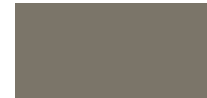
1015-3D (Richmond Grey)



1016-1L (Toasted Grey)



1016-2M (Country)



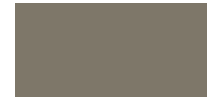
1016-3D (Calm Matter)



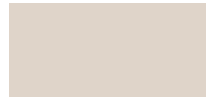
1017-1L (Cromwell Grey)



1017-2M (Rockport Grey)



1017-3D (Cameroon Grey)



1018-1L (Biscuit)



1018-2M (River Sand)



1018-3D (Elk Tan)



1019-1L (Melton Wood)



1019-2M (Simple Cream)



1019-3D (Sage Brush)



1020-1L (Lambs Skin)



1020-2M (Somerset Toupee)



1020-3D (Wethersfield)

Printed samples represent actual finish colours as closely as possible. Colour appearance may vary by texture, lighting and method of application. Always request a textured sample before ordering.



Durex[®] 2000 Series — Neutrals



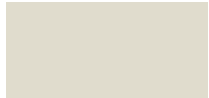
2001-1L (Fog Mist)



2001-2M (Blair Gold)



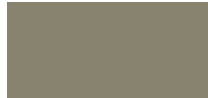
2001-3D (Yorkshire Tan)



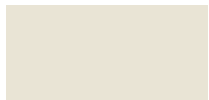
2002-1L (Grey Mist)



2002-2M (Middle Stone)



2002-3D (St. Peter Sage)



2003-1L (White Wash)



2003-2M (Washed Cliff)



2003-3D (Khaki)



2004-1L (Edgecomb Grey)



2004-2M (Copeland Grey)



2004-3D (Grey Linen)



2005-1L (Zinc)



2005-2M (Slate Grey)



2005-3D (Thatched Cottage)



2006-1L (Full Moon)



2006-2M (Silver Lining)



2006-3D (Cedar)



2007-1L (Silver Cloud)



2007-2M (Roof Slate)



2007-3D (Black Licorice)



2008-1L (Silver Streak)



2008-2M (Sea Spray)



2008-3D (Shadow)



2009-1L (River Rock)



2009-2M (Steam Boat)



2009-3D (Pebble Beach)



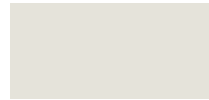
2010-1L (Lacey Pearl)



2010-2M (Harbour Grey)



2010-3D (Revere Pewter)



2011-1L (Alpine White)



2011-2M (Grasslands)



2011-3D (Mossy Oak)



2012-1L (Cloud Cover)



2012-2M (Silver Moss)



2012-3D (Peyote)



2013-1L (Pittsfield Buff)



2013-2M (Inukshuk)



2013-3D (Umber Brown)



2014-1L (October Grey)



2014-2M (Manor Grey)



2014-3D (Dawn Cyprus)



2015-1L (Grey Frost)



2015-2M (Buff Grey)



2015-3D (Clark Grey)



2016-1L (Nickel)



2016-2M (Winter Lake)



2016-3D (Magnum)



2017-1L (French Silver)



2017-2M (Gypsum)



2017-3D (Cool Steel)



2018-1L (Neutral Sand)



2018-2M (Steel Grey)



2018-3D (Toulouse Grey)



2019-1L (Winter)



2019-2M (Silver Fox)



2019-3D (Camouflage)



2020-1L (Frost Mist)



2020-2M (Sussex Falls)



2020-3D (Velvet Midnight)

Custom colour matching available, ask your Durabond representative for more information.



Durex® 3000 Series — Earths



3001-1L (Blush)



3001-2M (Cabot Trail)



3001-3D (Moccasin)



3002-1L (James Peach)



3002-2M (Autumn Haze)



3002-3D (Stampede)



3003-1L (Warm Cream)



3003-2M (Subtle Blossom)



3003-3D (Malimask)



3004-1L (Muslin)



3004-2M (Gypsy Moth)



3004-3D (Sierra)



3005-1L (Light House)



3005-2M (Desert Plateau)



3005-3D (Palimino)



3006-1L (Smooth Pebble)



3006-2M (Toronto Taupe)



3006-3D (Italian Ochre)



3007-1L (Dusty Road)



3007-2M (Surrey Beige)



3007-3D (Boudoir)



3008-1L (Sandy Beach)



3008-2M (Nevada Sun)



3008-3D (Sugar Maple)



3009-1L (Manilla)



3009-2M (Milan Brick)



3009-3D (Sassafras)



3010-1L (Monicello Rose)



3010-2M (Summerville Tan)



3010-3D (Dutch Brown)



3011-1L (Snow Drift)



3011-2M (Timescape)



3011-3D (Dusty Canyon)



3012-1L (Sand Point)



3012-2M (Suede)



3012-3D (Safari)



3013-1L (Rice Cake)



3013-2M (Toasted Seed)



3013-3D (Outcrop)



3014-1L (Mojave)



3014-2M (Spitfire)



3014-3D (Amber)



3015-1L (Silk Scarf)



3015-2M (Bison Brown)



3015-3D (Bramble Tan)



3016-1L (Raw Twine)



3016-2M (Rocky Road)



3016-3D (Tapestry Grey)



3017-1L (Saki)



3017-2M (Baffin Island)



3017-3D (Provincial Gold)



3018-1L (Seashell)



3018-2M (Moth Wing)



3018-3D (Golden Sand)



3019-1L (Toasted Vanilla)



3019-2M (Nutmeg)



3019-3D (Tudor Brown)



3020-1L (Ivory Fresco)



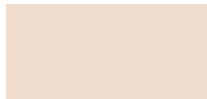
3020-2M (Sand Dune)



3020-3D (Banquet Brown)



Durex® 4000 Series — Spirited



4001-1L (Pale Peach)



4001-2M (Shadow Rose)



4001-3D (Teton Range)



4002-1L (Sheer Peach)



4002-2M (Gazelle)



4002-3D (Colonial Brick)



4003-1L (Silk Ribbon)



4003-2M (Cheyenne)



4003-3D (Bronze)



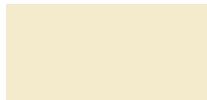
4004-1L (Butter Cream)



4004-2M (Summer Straw)



4004-3D (Mustard)



4005-1L (Cream Silk)



4005-2M (Barley)



4005-3D (Medallion)



4006-1L (Sunrise)



4006-2M (Threaded Gold)



4006-3D (Tuscany Sunset)



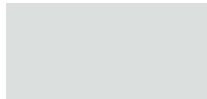
4007-1L (Barley Beige)



4007-2M (Tarnished Brass)



4007-3D (Yucatan)



4008-1L (Sky Scene)



4008-2M (Faded Denim)



4008-3D (Baltic Blue)



4009-1L (Frosted Glass)



4009-2M (Stratford Blue)



4009-3D (Kensington Blue)



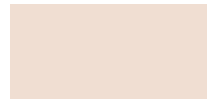
4010-1L (Earthenware)



4010-2M (Terra Cotta)



4010-3D (Cimarron)



4011-1L (Peach Mist)



4011-2M (Ethereal)



4011-3D (Florence)



4012-1L (Pink Carnation)



4012-2M (Catalina)



4012-3D (Gazpacho)



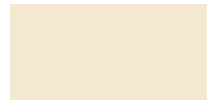
4013-1L (Rosedale)



4013-2M (Buckley Canyon)



4013-3D (Thoroughbred)



4014-1L (Ivory Palace)



4014-2M (Desert Tan)



4014-3D (Tuscany)



4015-1L (Western Flax)



4015-2M (Antique Locket)



4015-3D (Brass Buckle)



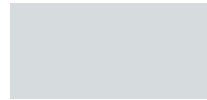
4016-1L (Buckwheat)



4016-2M (Cairo Gold)



4016-3D (Indian Spice)



4017-1L (Winter Rain)



4017-2M (Misty Cove)



4017-3D (North Sea)



4018-1L (Clarity)



4018-2M (Weymouth Bay)



4018-3D (West Coast)



4019-1L (Seville Sky)



4019-2M (Lake Mist)



4019-3D (Royalty)



4020-1D (Sundried)



4020-2D (Abalone)



4020-3D (Evening Dove)



Durex® Kolor Gard Fade Resistant Technology is available as a roller applied topcoat or can be integrated into any Durex® Architectural Coating. It is recommended to be used for deep and mass tone orders including red, orange, blue, black, yellow, purple and violet colours. Ask your Durabond Representative for more information.

ROLLER APPLIED COATINGS



BRUSH COAT

A versatile textured decorative coating with excellent permeability and water repellency.

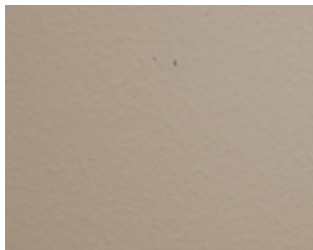
Application: 3/4" High Pile Roller & Paint Brush
Coverage: 37.2 m² (400 ft²/pail)
 Based on 2 coats



ROLTEX

A high build textured roller applied coating with excellent hiding power.

Application: 3/4" High Pile Roller or Texture Roller
Coverage: 27.9 m² (300 ft²/pail)



EMC

A breathable, highly elastomeric acrylic coating with superb crack bridging capabilities

Application: 3/4" High Pile Roller & Paint Brush
Coverage: 46.45 m² (500 ft²/pail)
 Based on 2 coats

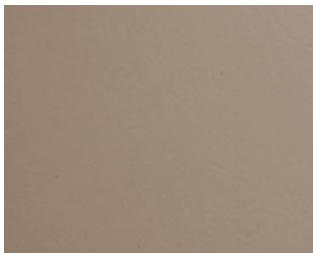


DUR-X-CEL

High quality coating used as a smooth protective coating or to re-coat trowel applied finishes.

Application: 3/4" High Pile Roller & Paint Brush
Coverage: 74.4 m² (800 ft²/pail)
 Based on 2 coats

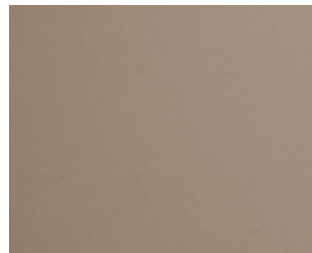
ADVANCED ROLLER APPLIED COATINGS



ACROTEL EC-A

High-performance elastomeric coating with Anti-Carbonation technology that protects concrete.

Application: 3/4" High Pile Roller & Paint Brush
Coverage: 46.45 m² (500 ft²/pail)
 Based on 2 coats

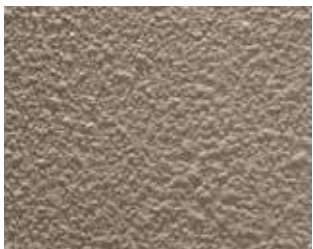


ECTO-SIL

A silicone based elastomeric protective coating with unparalleled UV and weathering resistance.

Application: 3/4" High Pile Roller & Paint Brush
Coverage: 49m² (530 ft²/pail)
 Based on 2 coats

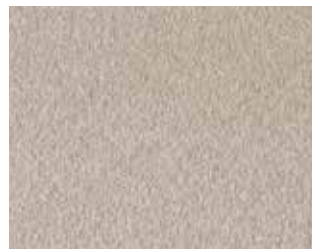
SPRAY APPLIED COATINGS



STUCCO SPRAY

Traditional and elegant spray applied finish ideal for coating large wall areas.

Application: Spray Gun & Compressor
Coverage: 14.9 - 18.6 m² (160 - 200 ft²/pail)



TRIM SPRAY

Specially formulated spray applied coating with fine aggregates for mouldings and trims with superb hiding power.

Application: Spray Gun & Compressor
Coverage: 18.6 m² (200 ft²/pail)

KOLOR GARD TECHNOLOGY



Durex® Kolor Gard incorporates fade resistant pigmentation technology with an advanced pigmentation system engineered to enhance the colour fastness of bright and deep mass tone colours. It is recommended to be used for red, orange, blue, black, yellow, purple and violet colours. Durex® Kolor Gard is available in a roller applied topcoat or can be integrated into any Durex® Architectural Coating.

Application: Roller
Coverage: 74.4 m² (800 ft²/pail) - Based on 2 coats

Available in a multitude of textures and thousands of colours, the Durex® brand of finishes is at the forefront of the architectural coatings industry. Ease of application and supreme long-term durability are qualities that make **Durex® Architectural Coatings** a market leader.

CLASSIC FINISHES



MARBLE COAT 1.5

Our most popular texture, gives a coarse high-build finish with added depth of texture.

Application: Steel Trowel & Plastic Float
Coverage: 9.3 m² (100 ft²/pail)



PEBBLEFLOAT

A coarse, high build finish with uniform stone sizes for a pebble-like appearance.

Application: Steel Trowel & Plastic Float
Coverage: 9.3 m² (100 ft²/pail)



MARBLE COAT 1.0

Another popular texture, a medium build finish for a slightly finer but deep look.

Application: Steel Trowel & Plastic Float
Coverage: 11.2 m² (120 ft²/pail)



SANDEX

Our finest float applied finish. Yields a fine, uniform pebble finish.

Application: Steel Trowel & Plastic Float
Coverage: 13 m² (140 ft²/pail)



VENECIAN

A medium build finish with added aggregate for a classic swirl look.

Application: Steel Trowel & Plastic Float
Coverage: 13 m² (140 ft²/pail)



GRAFFIATO

A coarse finish with added large aggregate for a linear scratched appearance.

Application: Steel Trowel & Plastic Float
Coverage: 9.3 m² (100 ft²/pail)

PREMIUM FINISHES*



SANDSTONE

A Precast like finish formulated to give a limestone appearance for a sharp, modern look.

Application: Stainless Steel Trowel
Coverage: 16.72 m² (180 ft²/pail)



RASATO

Medium grade smooth finish for a uniform, classic texture.

Application: Stainless Steel Trowel
Coverage: 14 m² (150 ft²/pail)



RUSTICO

Coarse grade smooth finish for a unique texture with a rustic feel.

Application: Stainless Steel Trowel
Coverage: 13.01 m² (140 ft²/pail)



ANTICO GLAZE

Translucent glaze that simulates a natural aging effect. For use over any texture.

Application: Roller, Sponge & Rag
Coverage: 30.2 m² (325 ft²/pail)

*Large wall applications are to be combined with reveals or architectural breaks.

Durex GEMSTONE - PREMIUM FINISHES

Durex® Gemstone is a high build, multi-coloured, protective and decorative coating consisting of coloured aggregates and oversized mica flakes embedded in a clear, 100% acrylic resin. Its distinctive features allow the designer to create attractive and unique surfaces.

Application: Metal Trowel

Coverage: 11.1 m² (120 ft²/pail)

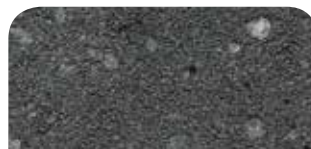
Primer is required.



Tuscan Heights



Athabasca Sands



Tambora Ash



Dolomite White



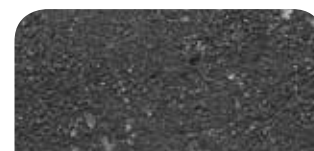
Moroccan Hills



Stonehenge



Georgian Granite



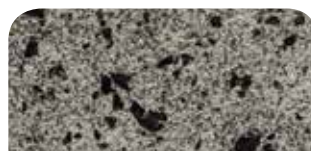
Black Maine



Tera Serengeti



Riversand



Nordic Pearl



Gibraltar Stone

COMPANY PROFILE

For over 50 years Durabond Products Limited has delivered technically superior products and solutions to the construction industry through manufacturing high-quality, specialized Architectural Wall Coatings, Exterior Insulation and Finishing Systems (EIFS), Concrete Restoration Products and a wide range of related construction products to protect and enhance the building enclosure.

Head Office

55 Underwriters Road
Toronto, Ontario M1R 3B4
T (416) 759-4474
F (416) 759-4470

Mississauga Office

6178 Netherhart Rd
Mississauga, ON L5T 1B4
T (905) 565-9283
F (905) 565-9365

Western Canada Office

14345-120th Avenue
Edmonton, Alberta T5L 2R8
T (780) 451-6364
F (780) 453-9056

General Inquiries

TF 1 877 387-2266
E info@durabond.com
W www.durabond.com

Printed samples represent actual finish colours as closely as possible. Colour appearance may vary by texture, lighting and method of application. Always request a textured sample before ordering.

