



DURAbond

50+
YEARS
1967-2017

**Protect.
Enhance.
Outperform.**

Durex[®]
DUR-A-BRICK

Brick Stencil Pattern Premium Architectural Finish

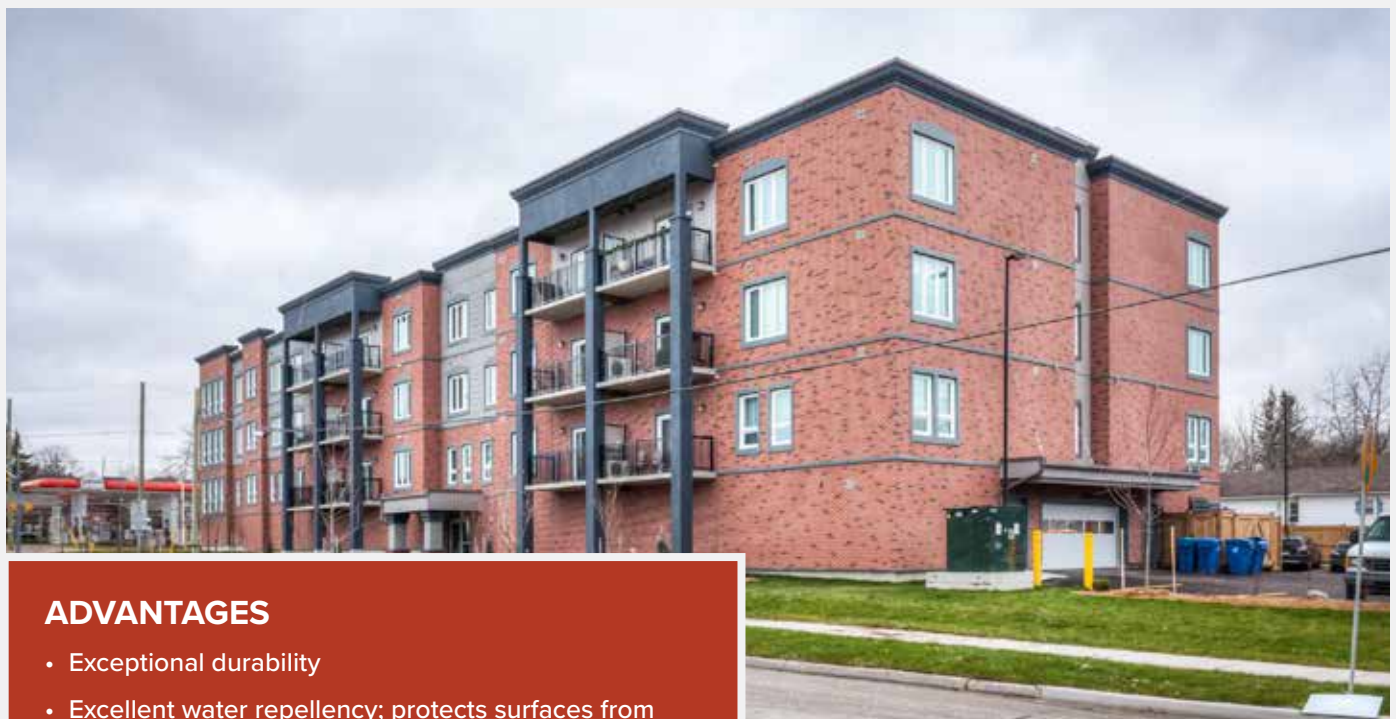
COMPLETE GUIDE

DUR-A-BRICK

Brick Stencil Pattern Premium Architectural Finish

DUREX® DUR-A-BRICK is a specialized brick stencil pattern Architectural Finish that creates a unique finish that simulates the look and feel of a brick-masonry material. Dur-A-Brick has the ability to be finished with a variety of Durex® Architectural Coatings and is available in a multitude of stencil patterns to create and match virtually any brick and stone design.

Dur-A-Brick is designed for use on both commercial and residential applications. Retain all of the benefits and thermal properties of EIFS claddings when used in combination with any Durex® Insulated, Non-Insulated, and Pre-Fabricated System. Standard and custom stencil sizes available.



ADVANTAGES

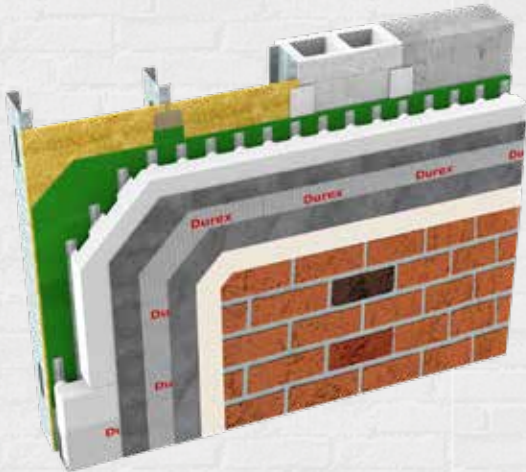
- Exceptional durability
- Excellent water repellency; protects surfaces from moisture penetration
- Breathable coating; allows water vapour within the wall system to evaporate
- Excellent adhesion to substrate
- Colourfast, not affected by ultra-violet rays



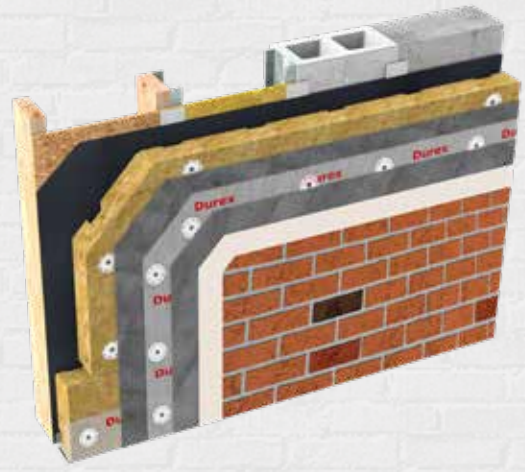
Dur-A-Brick Cladding Combinations

Need help choosing? Ask us!

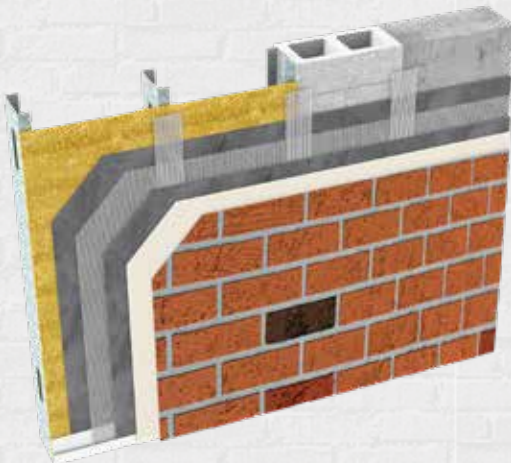
Insulated System applications available with high-impact reinforcement to give durability and impact resistance that is superior than traditional clay brick applications.



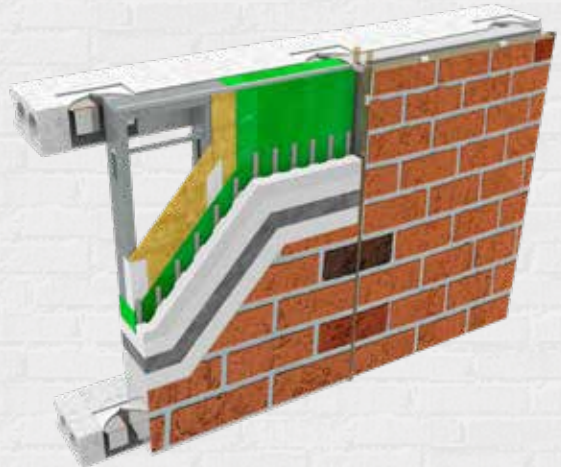
Dur-A-Brick Finish on **Durex® Quantum Select**
(Advanced Drainage & Thermal Resistance)



Dur-A-Brick Finish on **Durex® Equalite Select**
(Non-Combustible Cladding System)



Dur-A-Brick Finish on **Durex® Stucco Lite**
(Non-Insulated Cladding System)



Dur-A-Brick Finish on **Durex® IBS**
(Pre-Fabricated Building System)

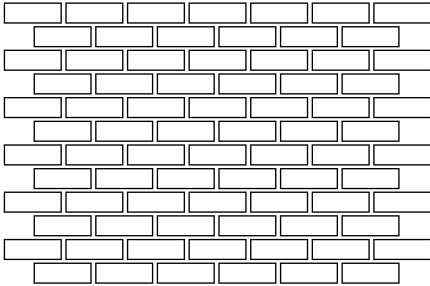


Standard Stencil Layouts

Custom sizes available on request

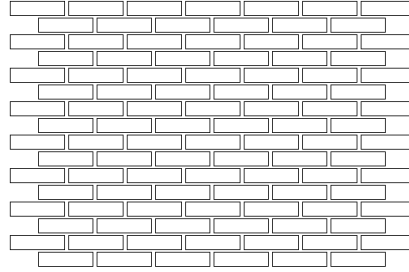
Regular Face Brick (S,R)

2 1/4" x 7 5/8" Brick with 1/2" mortar



Metric Face Brick (S,R)

2" x 7 7/8" Brick with 3/8" mortar

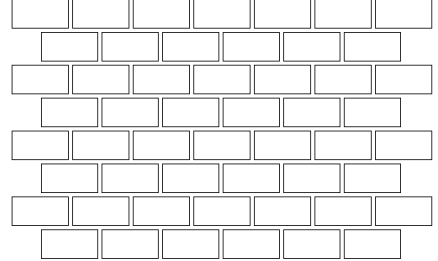


Metric Soldier Course



Running Bond Brick (S,R)

4" x 7 3/4" Brick with 1/2" mortar

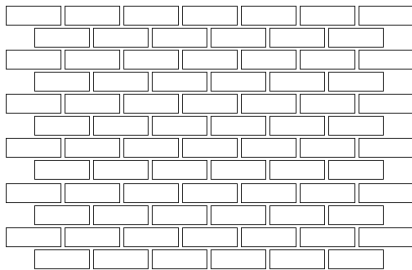


Soldier Course



Queens Brick (S,R)

2 3/4" x 7 7/8" Brick with 3/8" mortar

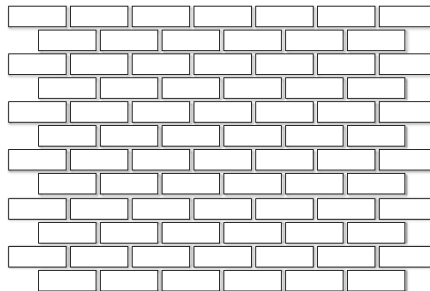


Queens Soldier Course



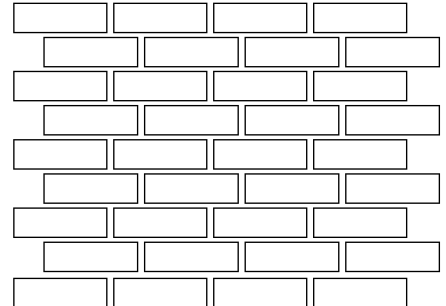
Mid-Town Stucco (S,R)

3" x 10 1/2" Brick with 1/2" mortar



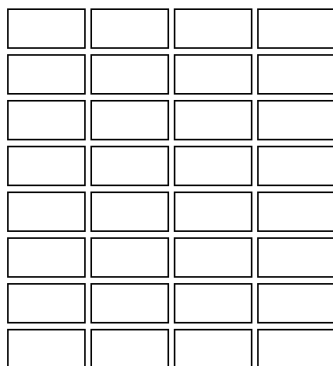
Utility Brick (S,R)

3 5/8" x 11 5/8" Brick with 1/2" mortar



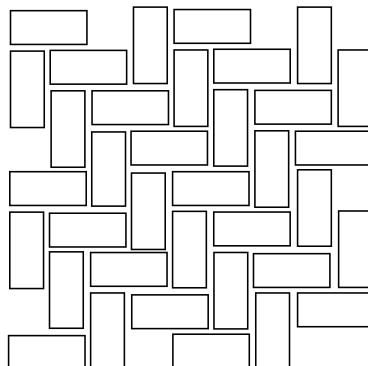
Stacked Bond (S,R)

3 7/8" x 7 5/8" Brick with 1/2" mortar



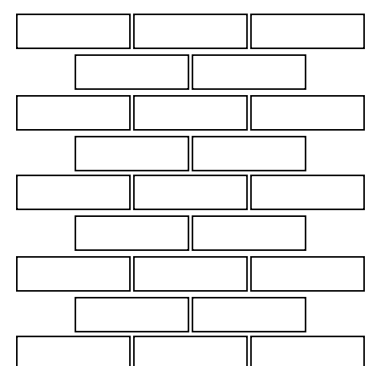
Herringbone (S,R)

3 5/8" x 7 3/4" Brick with 3/8" mortar



Hudson Brick (S,R)

3 5/8" x 11 1/2" Brick with 1/2" mortar



Colour Examples

UNLIMITED colours available from Durabond Colour Guide



Colonial



Gray



Light Rose



Red Peach



White Brick



Red Brick



Brown Brick

Customizable Textured Finishes

Add **ANY** Durex® Architectural Finish to Dur-A-Brick! *(Some Examples Below)*



Antico Glaze
on Dur-A-Brick



Century Stone
on Dur-A-Brick



Gemstone
on Dur-A-Brick



Graffiato
on Dur-A-Brick



Rustico
on Dur-A-Brick



MarbleCoat 1.5
on Dur-A-Brick

Please request Durabond Colour and Finish Guides for a full catalogue of available textures and colours, or download the Guides at www.durabond.com

Printed samples represent actual finish colours as closely as possible. Colour appearance may vary by texture, lighting, and method of application. Always request a textured sample before ordering.

Step-by-Step Instructions

General Overview

1 Start by laying out the brick stencil on the ground to mimic project's drawings. Cut the stencil to working lengths and lay it flat with the release tape facing upward on a clean surface. Lay a 2"x 2" board that is 40" long over the width of one end of the stencil. Pull a portion of the release tape up so it can be wrapped around the 2"x 2" board (as shown in this photo). Once you get the release tape started, rolling the 2"x 2" board across the stencil will assist you in removing the release tape uniformly.

2 Once the stencil release paper has been removed, with the assistance of a helper, place the stencil against the wall, aligning the pattern to the predetermined layout.

3 Immediately use a clean stainless steel trowel, push the stencil firmly against the prepared wall surface (avoid snagging the stencil with the trowel.) Work within controlled areas until you get the feel for how much area you can comfortably apply with stencil. Do not apply more stencil than you will be able to finish within a couple of hours.

4 Once the stencil is secured, trowel the finish diagonally across wall. The diagonal method helps to minimize the amount of finish that is pushed under the template. Immediately double back and remove the finish down to the top side of the stencil. Next, float the finish with a plastic float in either a random or vertical motion. It is not critical to make the texture perfect, irregularities actually make the finish look more realistic.

5 As soon as the texturing is complete, remove the stencil. Pull the stencil outward and perpendicular to the wall before the finish begins to dry. This technique helps to keep the edges clean.



Installation Instructions

Good Practice Techniques

1 Laying out the Brick Pattern

- a. It is extremely important the layout of the brick pattern on the wall be square and properly aligned to the bottom, taking into consideration the overall configuration of the wall. If the wall is not perfectly square, partial bricks at the ends and top or bottom may grow noticeably larger or smaller from bottom to top or side to side.
- b. Expansion joints. Care must be taken in the placement of expansion joints so to create a symmetrical design / layout of the overall appearance of the finish. Care should be taken to ensure that vertical expansion joints are parallel to the sides. If the wall will contain horizontal expansion joints, care should be taken in the layout to ensure that the distance between expansion joints be exact multiples of four and one-half inches (the width of one course of bricks). Placing the expansion joints in this manner enables the applicator to place the stencil so that expansion joints fall on a mortar joint rather than cut through the center of bricks.

2 Prepare an adequate size mock-up sample to determine the correct placement of the stencil template. Verify compatibility of the adhesive to the base coat of the wall surface.

3 Layout the stencil templates on the existing applied base coat that is dry and free from dust. Trim stencil templates to fit. Remove the backing from the adhesive side of the stencil templates.

4 Cut stencil into lengths approximately two feet longer than the length (end to end) of the wall.

5 Place the stencil template against the wall surface. Using a trowel or a roller, press the stencil template against the wall surface. Check stencil template for plum, level and complete contact. **NOTE:** *Areas of the stencil templates that do not adhere may leak wall finish and produce undesirable results. Apply only enough of the stencil templates that can be finished with the existing manpower and weather conditions.*

6 Apply the selected Durex Brick Texture Finish to the desired texture (tinted to the selected project colour) in accordance with the Durex Architectural Coatings application instructions and projects specifications.

7 Removal of the stencil templates is based on timing. Installing contractor should determine from the mock-up the appropriate time to remove the stencil templates from the wall surface. **NOTE:** *Temperature, humidity and type of wall finish will affect the timing of the removal of the stencil templates. If the stencil templates are left on too long they may be hard to remove.*

8 The stencil templates may have to be trimmed from the wall finish material, depending on thickness. The wall finish shall match the approved field sample.



DUREX® DUR-A-BRICK Brick Stencil Pattern Premium Architectural Finish are used by specialists who have been certified by Durabond.

For more information ask your Durabond representative.



DURabond 

Mississauga

6178 Netherhart Road, Mississauga, ON Canada L5T 1B7
Tel 905.565.9283 Fax 905.565.9365 info@durabond.com

Toronto

55 Underwriters Road, Scarborough, ON Canada M1R 3B4
Tel 416.759.4474 Fax 416.759.4470 info@durabond.com

Edmonton

14345 120th Avenue, Edmonton, AB Canada T5L 2R8
Tel 780.451.6364 Fax 780.453.9056 info@durabond.com

Toll Free (North America): 1.877.387.2266

The recommendations and information in this chart/document are for the application of Durex® products manufactured by Durabond, and are based on practical knowledge for general site conditions and uses. This chart is to be used as a reference guide only to identify and display the various products for general, non-site specific applications for a variety of installations. Differences in site conditions, preparations, materials are continuously variable and unknown.

As such, no warranty, guarantee or legal binding relationship is implied whatsoever with these products and systems and no guarantee can be made to their performance. In addition, preparation and condition of the substrate is of such utmost importance that a Durabond Technical Representative must be notified prior to installation of any of the aforementioned products and/or systems.

An installer must always prepare the surface to the recommendations found on the current data sheet of each product written and produced by Durabond Technical Coatings Limited. These data sheets can be obtained from Durabond's website, www.durabond.com, or by contacting a Technical Sales Representative directly.