

Marble Coat

Acrylic High Build Multi-Coloured Decorative Coating

Durex® Architectural Coatings



PRODUCT DESCRIPTION:

DUREX MARBLE COAT is a high build, multi-coloured, protective coating consisting of coloured quartz aggregates embedded in a clear, 100% acrylic resin. It is one of the coatings in the family of the **Durex Architectural Wall Coatings**.

USES:

DUREX MARBLE COAT is used as an effective long wearing protective coating over all types of solid substrates. **DUREX MARBLE COAT** is mixed to match selected colours.

ADVANTAGES:

- exceptional durability
- excellent water repellency; protects surfaces from moisture penetration
- breathable coating; allows water vapour within the wall system to evaporate
- excellent adhesion to substrate
- colourfast; not affected by ultra-violet rays

LIMITATIONS:

DUREX MARBLE COAT is not recommended for use:

- over previously treated surfaces without proper preparation
- surfaces where oils and other contaminants are present
- when ambient, surface and material temperatures are below 5°C (41°F) during application and curing period

APPLICATION:

DO NOT SUBSTITUTE NOR COMPENSATE **DUREX MARBLE COAT** WITH WATER OR OTHER ADDITIVES.

Thoroughly mix **DUREX MARBLE COAT** in its own pail before each use. Discard all frozen materials, materials which have formed solid lumps at the bottom of the container and materials which do not appear to be of a homogeneous viscosity.

Substrate must be dry, solid and sound, free of weak and powdery surfaces, free from ice, snow, dew and frost, oil, grease releasing agents and other deleterious materials detrimental to a positive bond.

Check with **Durabond Products Limited** for questionable surfaces. Application of the **DUREX MARBLE COAT** shall be executed by a team of at least 2 tradesmen. While one tradesman spreads the coating on the wall the second tradesman following shall float the freshly applied coating to the desired texture.

The process of applying and floating the **DUREX MARBLE COAT** coating shall be continuous from the starting point to a natural break point, such as expansion/control joints and corners.

Using a stainless steel trowel spread the **Durex MARBLE COAT** onto the wall with upward strokes of the trowel. Hold the trowel at a 20-25 degree angle to the wall for better spreadability.

Apply sufficient pressure to provide an even and consistent layer of coating equivalent to the thickness of the largest sphere-like quartz aggregate in the mix.

Marble Coat

Using a plastic trowel begin the floating process in an up and down motion of approximately 400 mm - 450 mm (16" -18") in stroke length immediately after the coating has been freshly applied. Keep a wet edge. Do not allow the freshly applied coating to form a surface film before beginning the floating process.

The final texture shall be created in the floating process by the aggregate rolling between the trowel and the substrate leaving an even sand-like smooth pattern throughout in the final finish.

Allow a minimum of 24 hours for curing. Protect freshly applied coating from inclement weather until coating has fully set and cured. Prevent rapid evaporation.

CLEAN-UP:

Clean all tools promptly after each use with clean water. Do not allow mixes to dry on tools. **Durex Cleaning Solution CS-100** is available to aid cleaning of soiled areas where the **DUREX MARBLE COAT** has dried.

STORAGE:

Store **DUREX MARBLE COAT** in a dry, vented, waterproof location, stacked off the ground with

ambient temperatures above 5°C (41°F). Keep materials dry, protected from rapid temperature changes, dampness and moisture and away from direct sunlight. **KEEP FROM FREEZING.**

PACKAGING:

DUREX MARBLE COAT is readily available in an assortment of 28 colour schemes. **DUREX MARBLE COAT** is packaged in 30 kg pails.

COVERAGE:

Average coverage: 9.3 m²/pail (100 ft²/pail)

Marble Coat Medium: 11.15 m²/pail (120 ft²/pail)

WARRANTY:

Durabond Products Limited fully warrants their products when used and applied in strict accordance with the printed instructions on product mixing and product application. In any case **Durabond's** responsibility shall not exceed either the refund of the purchase price, or the replacement of the purchased product.

TECHNICAL SERVICES:

Technical assistance for unique applications and design is available upon request from **Durabond Products Limited.**

DURABOND

Manufacturers and Distributors of High Quality Construction Products

55 Underwriters Road, Toronto, Ontario M1R 3B4

Tel: (416) 759-4474 Toll Free: 1-877-DURABOND (387-2266) Fax: (416) 759-4470

Email: info@durabond.com Website: www.durabond.com

Venician

Acrylic High Build Multi-Coloured Decorative Coating

Durex® Architectural Coatings



PRODUCT DESCRIPTION:

DUREX VENICIAN is a high build, multi-coloured, protective coating consisting of coloured quartz aggregates embedded in a clear, 100% acrylic resin. It is one of the coatings in the family of the **Durex Architectural Wall Coatings**.

USES:

DUREX VENICIAN is used as an effective long wearing protective coating over all types of solid substrates. **DUREX VENICIAN** is mixed to match selected colours.

ADVANTAGES:

- exceptional durability
- excellent water repellency; protects surfaces from moisture penetration
- breathable coating; allows water vapour within the wall system to evaporate
- excellent adhesion to substrate
- colourfast; not affected by ultra-violet rays

LIMITATIONS:

DUREX VENICIAN is not recommended for use:

- **over previously treated surfaces without proper preparation**
- surfaces where oils and other contaminants are present
- when ambient, surface and material temperatures are below 5°C (41°F) during application and curing period

APPLICATION:

DO NOT SUBSTITUTE NOR COMPENSATE **DUREX VENICIAN** WITH WATER OR OTHER ADDITIVES.

Thoroughly mix **DUREX VENICIAN** in its' own pail before each use. Discard all frozen materials, materials which have formed solid lumps at the bottom of the container and materials which do not appear to be of a homogeneous viscosity.

Substrate must be dry, solid and sound, free of weak and powdery surfaces, free from ice, snow, dew and frost, oil, grease releasing agents and other deleterious materials detrimental to a positive bond.

Check with **Durabond Products Limited** for questionable surfaces.

Application of the **DUREX VENICIAN** shall be executed by a team of at least 2 tradesmen. While one tradesman spreads the coating on the wall the second tradesman following shall float the freshly applied coating to the desired texture.

The process of applying and floating the **DUREX VENICIAN** coating shall be continuous from the starting point to a natural break point, such as expansion/control joints and corners.

Using a stainless steel trowel spread the **DUREX VENICIAN** onto the wall with upward strokes of the trowel. Hold the trowel at a 20-25 degree angle to the wall for better spreadability.

Apply sufficient pressure to provide an even and consistent layer of coating equivalent to the thickness of the largest sphere-like quartz aggregate in the mix.

Using a plastic trowel begin the floating process in an



Venician

up and down motion of approximately 400 mm - 450 mm (16" -18") in stroke length immediately after the coating has been freshly applied. Keep a wet edge. Do not allow the freshly applied coating to form a surface film before beginning the floating process.

The final texture shall be created in the floating process by the aggregate rolling between the trowel and the substrate leaving light, semi-circular scratch-like indentations evenly throughout in the final finish.

Allow a minimum of 24 hours for curing. Protect freshly applied coating from inclement weather until coating has fully set and cured. Prevent rapid evaporation.

CLEAN-UP:

Clean all tools promptly after each use with clean water. Do not allow mixes to dry on tools. **Durex Cleaning Solution CS-100** is available to aid cleaning of soiled areas where the **DUREX VENICIAN** has dried.

STORAGE:

Store **DUREX VENICIAN** in a dry, vented, waterproof location, stacked off the ground with

ambient temperatures above 5°C (41°F). Keep materials dry, protected from rapid temperature changes, dampness and moisture and away from direct sunlight. **KEEP FROM FREEZING.**

PACKAGING:

DUREX VENICIAN is readily available in an assortment of 28 colour schemes. **DUREX VENICIAN** is packaged in 30 kg pails.

COVERAGE:

Average coverage:

13.0 m²/pail (140 ft²/pail)

WARRANTY:

Durabond Products Limited fully warrants their products when used and applied in strict accordance with the printed instructions on product mixing and product application. In any case **Durabond's** responsibility shall not exceed either the refund of the purchase price, or the replacement of the purchased product.

TECHNICAL SERVICES:

Technical assistance for unique applications and design is available upon request from **Durabond Products Limited.**

DURAbOND

Manufacturers and Distributors of High Quality Construction Products

55 Underwriters Road, Toronto, Ontario M1R 3B4

Tel: (416) 759-4474 Toll Free: 1-877-DURABOND (387-2266) Fax: (416) 759-4470

Email: info@durabond.com Website: www.durabond.com

SANDEX

Acrylic High Build Multi-Coloured Decorative Coating

Durex® Architectural Coatings



PRODUCT DESCRIPTION:

DUREX SANDEX is a high build, multi-coloured, protective coating consisting of coloured quartz aggregates embedded in a clear, 100% acrylic resin. It is one of the coatings in the family of the **Durex Architectural Wall Coatings**.

USES:

DUREX SANDEX is used as an effective long wearing protective coating over all types of solid substrates. **DUREX SANDEX** is mixed to match selected colours.

ADVANTAGES:

- exceptional durability
- excellent water repellency; protects surfaces from moisture penetration
- breathable coating; allows water vapour within the wall system to evaporate
- excellent adhesion to substrate
- colourfast; not affected by ultra-violet rays

LIMITATIONS:

DUREX SANDEX is not recommended for use:

- over previously treated surfaces without proper preparation
- surfaces where oils and other contaminants are present
- when ambient, surface and material temperatures are below 5°C (41°F) during application and curing period

APPLICATION:

DO NOT SUBSTITUTE NOR COMPENSATE **DUREX SANDEX** WITH WATER OR OTHER ADDITIVES.

Thoroughly mix **DUREX SANDEX** in its own pail before each use. Discard all frozen materials, materials which have formed solid lumps at the bottom of the container and materials which do not appear to be of a homogeneous viscosity.

Substrate must be dry, solid and sound, free of weak and powdery surfaces, free from ice, snow, dew and frost, oil, grease releasing agents and other deleterious materials detrimental to a positive bond.

Check with **Durabond Products Limited** for questionable surfaces.

Application of the **DUREX SANDEX** shall be executed by a team of at least 2 tradesmen. While one tradesman spreads the coating on the wall the second tradesman following shall float the freshly applied coating to the desired texture.

The process of applying and floating the **DUREX SANDEX** coating shall be continuous from the starting point to a natural break point, such as expansion/control joints and corners.

Using a stainless steel trowel spread the **DUREX SANDEX** onto the wall with upward strokes of the trowel. Hold the trowel at a 20-25 degree angle to the wall for better spreadability.

Apply sufficient pressure to provide an even and consistent layer of coating equivalent to the thickness of the largest sphere-like quartz aggregate in the mix.

Sandex

Using a plastic trowel begin the floating process in an up and down motion of approximately 400 - 450 mm (16-18 inches) in stroke length immediately after the coating has been freshly applied. Keep a wet edge. Do not allow the freshly applied coating to form a surface film before beginning the floating process.

The final texture shall be created in the floating process by the aggregate rolling between the trowel and the substrate leaving an even-like smooth pattern throughout in the final finish.

Allow a minimum of 24 hours for curing. Protect freshly applied coating from inclement weather until coating has fully set and cured. Prevent rapid evaporation.

CLEAN-UP:

Clean all tools promptly after each use with clean water. Do not allow mixes to dry on tools. **Durex Cleaning Solution CS-100** is available to aid cleaning of soiled areas where the **DUREX SANDEX** has dried.

STORAGE:

Store **DUREX SANDEX** in a dry, vented, waterproof location, stacked off the ground with ambient temperatures above 5°C (41°F). Keep materials dry,

protected from rapid temperature changes, dampness and moisture and away from direct sunlight. KEEP FROM FREEZING.

PACKAGING:

DUREX SANDEX is readily available in an assortment of 28 colour schemes. **DUREX SANDEX** is packaged in 30 kg pails.

COVERAGE:

Average coverage:
13.0 m²/pail (140 ft²/pail)

WARRANTY:

Durabond Products Limited fully warrants their products when used and applied in strict accordance with the printed instructions on product mixing and product application. In any case **Durabond's** responsibility shall not exceed either the refund of the purchase price, or the replacement of the purchased product.

TECHNICAL SERVICES:

Technical assistance for unique applications and design is available upon request from **Durabond Products Limited**.

DURABOND

Manufacturers and Distributors of High Quality Construction Products

55 Underwriters Road, Toronto, Ontario M1R 3B4

Tel: (416) 759-4474 Toll Free: 1-877-DURABOND (387-2266) Fax: (416) 759-4470

Email: info@durabond.com Website: www.durabond.com

GRAFFIATO

Acrylic High Build Multi-Coloured Decorative Coating

Durex® Architectural Coatings



PRODUCT DESCRIPTION:

DUREX GRAFFIATO is a high build, multi-coloured, protective coating consisting of coloured quartz aggregates embedded in a clear, 100% acrylic resin. It is one of the coatings in the family of the **Durex Architectural Wall Coatings**.

USES:

DUREX GRAFFIATO is used as an effective long wearing protective coating over all types of solid substrates. **DUREX GRAFFIATO** is mixed to match selected colours.

ADVANTAGES:

- exceptional durability
- excellent water repellency; protects surfaces from moisture penetration
- breathable coating; allows water vapour within the wall system to evaporate
- excellent adhesion to substrate
- colourfast; not affected by ultra-violet rays

LIMITATIONS:

DUREX GRAFFIATO is not recommended for use:

- over previously treated surfaces without proper preparation
- surfaces where oils and other contaminants are present
- when ambient, surface and material temperatures are below 5°C (41°F) during application and curing period

APPLICATION:

DO NOT SUBSTITUTE NOR COMPENSATE **DUREX GRAFFIATO** WITH WATER OR OTHER ADDITIVES.

Thoroughly mix **DUREX GRAFFIATO** in its own pail before each use. Discard all frozen materials, materials which have formed solid lumps at the bottom of the container and materials which do not appear to be of a homogeneous viscosity.

Substrate must be dry, solid and sound, free of weak and powdery surfaces, free from ice, snow, dew and frost, oil, grease releasing agents and other deleterious materials detrimental to a positive bond.

Check with **Durabond Products Limited** for questionable surfaces. Application of the **DUREX GRAFFIATO** shall be executed by a team of at least 2 tradesmen. While one tradesman spreads the coating on the wall the second tradesman following shall float the freshly applied coating to the desired texture.

The process of applying and floating the **DUREX GRAFFIATO** coating shall be continuous from the starting point to a natural break point, such as expansion/control joints and corners.

Using a stainless steel trowel spread the **Durex GRAFFIATO** onto the wall with upward strokes of the trowel. Hold the trowel at a 20-25 degree angle to the wall for better spreadability.

Apply sufficient pressure to provide an even and consistent layer of coating equivalent to the thickness of the largest sphere-like quartz aggregate in the mix.

GRAFFIATO

Using a plastic trowel begin the floating process in an up and down motion of approximately 400 mm - 450 mm (16" -18") in stroke length immediately after the coating has been freshly applied. Keep a wet edge. Do not allow the freshly applied coating to form a surface film before beginning the floating process.

The final texture shall be created in the floating process by the aggregate rolling between the trowel and the substrate leaving vertical scratch-like indentations in the final finish.

Allow a minimum of 24 hours for curing. Protect freshly applied coating from inclement weather until coating has fully set and cured. Prevent rapid evaporation.

CLEAN-UP:

Clean all tools promptly after each use with clean water. Do not allow mixes to dry on tools. **Durex Cleaning Solution CS-100** is available to aid cleaning of soiled areas where the **DUREX GRAFFIATO** has dried.

STORAGE:

Store **DUREX GRAFFIATO** in a dry, vented, waterproof location, stacked off the ground with

ambient temperatures above 5°C (41°F). Keep materials dry, protected from rapid temperature changes, dampness and moisture and away from direct sunlight. **KEEP FROM FREEZING.**

PACKAGING:

DUREX GRAFFIATO is readily available in an assortment of 28 colour schemes. **DUREX GRAFFIATO** is packaged in 30 kg pails.

COVERAGE:

Average coverage: 9.3 m²/pail (100 ft²/pail)

WARRANTY:

Durabond Products Limited fully warrants their products when used and applied in strict accordance with the printed instructions on product mixing and product application. In any case **Durabond's** responsibility shall not exceed either the refund of the purchase price, or the replacement of the purchased product.

TECHNICAL SERVICES:

Technical assistance for unique applications and design is available upon request from **Durabond Products Limited.**

DURAbOND

Manufacturers and Distributors of High Quality Construction Products

55 Underwriters Road, Toronto, Ontario M1R 3B4

Tel: (416) 759-4474 Toll Free: 1-877-DURABOND (387-2266) Fax: (416) 759-4470

Email: info@durabond.com Website: www.durabond.com

Dur-X-Cel 100

Exterior Grade Acrylic Latex Paint

Durex® Architectural Coatings



PRODUCT DESCRIPTION:

DUR-X-CEL 100 is a 100 % flat acrylic based paint.

BASIC USES:

DUR-X-CEL 100 is used as a premium quality paint for exterior masonry and concrete surfaces.

DUR-X-CEL 100 can be pigmented to match almost any colour.

ADVANTAGES:

- exceptional exterior durability
- excellent water repellency; protects wall from moisture penetration
- breathable coating; allows water vapour within the wall system to evaporate
- excellent adhesion to substrate
- abrasion resistant
- colourfast (no colour change under ultra-violet rays)

LIMITATIONS:

DUR-X-CEL 100 is not recommended for use:

- over previously treated surfaces without proper preparation
- surfaces where oils and other contaminants are present
- when ambient, surface and material temperatures are below 5°C (41°F) during application and curing period
- under hot sun conditions nor under high humidity conditions
- for 48 hours prior to, during and for minimum 24 hours after inclement weather conditions

APPLICATION:

DO NOT SUBSTITUTE NOR COMPENSATE **DUR-X-CEL 100** WITH WATER OR OTHER ADDITIVES.

Substrate to be treated must be dry, clean and sound, free of weak and powdery surfaces, free from ice, snow, dew and frost, oil, grease and other deleterious materials detrimental to a positive bond.

Check with **Durabond Products Limited** for questionable surfaces.

Thoroughly stir **DUR-X-CEL 100** in its' own pail before each use. Discard all frozen materials, materials which have formed solid lumps at the bottom of the container and materials which do not appear to be of a homogeneous viscosity.

Using a 6.4 mm (1/4") pile roller dip roller into stirred pail of material. Apply the paint with several passes of the roller, evenly spreading the paint over the entire substrate surface. Allow a minimum of 24 hours for drying between coats.

CLEAN-UP:

Clean all tools promptly after each use with clean water. Do not allow paint to dry on tools. **Durex Cleaning Solution CS-100** is available to aid cleaning of soiled areas where the **DUR-X-CEL 100** has dried.

STORAGE:

Store **DUR-X-CEL 100** in a dry, vented, waterproof location, stacked off the ground with ambient temperatures above 5°C (41°F). Keep materials dry, protected from rapid temperature changes, from

Dur-X-Cel100

dampness and moisture and away from direct sunlight.

KEEP FROM FREEZING.

PACKAGING:

DUR-X-CEL 100 is packaged in 18.9 litre pails.

DUR-X-CEL 100 is available in 28 standard colours. Custom colour matching is available upon request at a slight additional charge.

COVERAGE:

Coverage will vary according to the porosity of the substrate, colour of original substrate and colour of the **DUR-X-CEL 100** to be applied.

Average coverage:

one coat : 5.6 m²/L (1200 ft²/pail)

two coats : 3.9 m²/L (800 ft²/pail)

A TEST SAMPLE SHOULD BE APPLIED TO ESTABLISH PRACTICAL COVERAGE ON THE ACTUAL SUBSTRATE.

WARRANTY:

Durabond Products Limited fully warrants their products when used and applied in strict accordance with the printed instructions on product mixing and product application. In any case **Durabond's** responsibility shall not exceed either the refund of the purchase price, or the replacement of the purchased product.

TECHNICAL SERVICES:

Technical assistance for unique applications and design is available upon request from **Durabond Products Limited**.

DURabond

Manufacturers and Distributors of High Quality Construction Products

55 Underwriters Road, Toronto, Ontario M1R 3B4

Tel: (416) 759-4474 Toll Free: 1-877-DURABOND (387-2266) Fax: (416) 759-4470

Email: info@durabond.com Website: www.durabond.com

Brush Coat

Acrylic High Build Protective & Decorative Coating

Durex® Architectural Coatings



PRODUCT DESCRIPTION:

DUREX BRUSH COAT is one of the various exterior textures offered by **Durabond Products Ltd.** under the trade name of **Durex Architectural Coatings.**

DUREX BRUSH COAT is a high build protective coating 100% acrylic based. It is the most versatile of the **Durex Architectural Coatings.** It is primarily roller applied, resulting in a light, uniform, sand textured finish. It can also be applied by brush.

USES:

DUREX BRUSH COAT, in a two coat application is an effective long wearing protective coating for concrete and masonry, for new as well as existing structures. **DUREX BRUSH COAT** provides a uniform appearance in both colour and texture.

ADVANTAGES:

DUREX BRUSH COAT provides the following features:

- exceptional exterior durability
- excellent water repellency, protects wall from moisture penetration
- breathable coating, allows water vapour within the wall system to evaporate
- excellent adhesion to substrate
- abrasion resistant
- colour fast (not affected by ultra violet rays)
- heavy duty protective coating

LIMITATIONS:

DUREX BRUSH COAT is not recommended for use:

- over previously treated surfaces without proper preparation

- surfaces where forming oils are still present
- when ambient, surface and material temperatures are below 5°C (41°F) during application and curing period

APPLICATION:

DO NOT SUBSTITUTE NOR COMPENSATE **DUREX BRUSH COAT** WITH WATER OR OTHER ADDITIVES.

Substrate must be dry, solid, clean and sound, free of weak and powdery surfaces, dust, dirt, oil, grease and other deleterious materials detrimental to a positive bond.

Check with **Durabond Products Limited** for questionable surfaces.

Clean substrate surfaces by wire brushing or other methods approved by **Durabond Products Ltd.** If necessary clean existing substrate surfaces by sandblasting or high pressure water blasting.

Apply a coat of **Durex Dur-X-Cel Primer** on all new concrete surfaces and chalky, mineral and/or weak concrete surfaces.

Thoroughly stir **DUREX BRUSH COAT** within it's own pail before each use. Discard all frozen materials, materials which have formed solid lumps at the bottom of the container and materials which do not appear to be of a homogeneous viscosity. Using a 6.4 mm (1/4") high pile roller, apply the coating with several passes of the roller, evenly spreading the coating over the entire substrate surface. Ensure that the final stroke of the roller is always in the same direction and with the same pressure applied to the roller.

Carefully organize the work with sufficient available tradesmen in order to complete an entire section from

Brush Coat

natural break point to natural break point. AVOID STOP AND START LINES WITHIN ANY ONE SECTION.

Protect freshly installed material from inclement weather until materials are fully set and cured. Allow a minimum of 24 hours for curing between coats.

CLEAN-UP:

Clean all tools promptly after use with clean water. Do not allow to dry on tools. See **Durex Cleaning Solution CS-100** (Group F) for softening of dried **DUREX BRUSH COAT**.

STORAGE:

Store **DUREX BRUSH COAT** on a dry, vented, waterproof location, stacked off the ground with ambient temperatures above 5°C (41°F). Keep materials dry, protected from rapid temperature changes, dampness and moisture and away from direct sunlight. KEEP FROM FREEZING.

PACKAGING:

DUREX BRUSH COAT is available in 28 standard colours. Custom colour matching is available upon

request at an additional charge. **DUREX BRUSH COAT** is packaged in 25 kg pails.

COVERAGE:

Average coverage rate will vary according to the porosity of the substrate:

one coat: 2.95 m²/L (600 ft²/pail)
two coats combined: 1.97 m²/L (400 ft²/pail)

WARRANTY:

Durabond Products Limited fully warrants their products when used and applied in strict accordance with the printed instructions on product mixing and product application. In any case **Durabond's** responsibility shall not exceed either the refund of the purchase price, or the replacement of the purchased product.

TECHNICAL SERVICES:

Technical assistance for unique applications and design is available upon request from **Durabond Products Limited**.

DURABOND

Manufacturers and Distributors of High Quality Construction Products

55 Underwriters Road, Toronto, Ontario M1R 3B4

Tel: (416) 759-4474 Toll Free: 1-877-DURABOND (387-2266) Fax: (416) 759-4470

Email: info@durabond.com Website: www.durabond.com

EMC

**Acrylic Elastomeric High Build Protective
& Decorative Coating**

Durex® Architectural Coatings

PRODUCT DESCRIPTION:

DUREX EMC is a 100% acrylic based elastomeric high build protective wall coating. Its' unique formulation permits bridging of minor cracks which can normally appear in walls. A breathable coating, the **DUREX EMC** provides an effective weather shield for wall surfaces.

USES:

DUREX EMC can be applied over almost any solid substrate including but not limited to, the following:

- clean concrete and masonry and all other types of cementitious substrates
- over solid clean substrates, including stucco with cracks not greater than 1.6 mm (1/16") wide
- exterior and interior surfaces
- stone, precast, exposed aggregate surfaces

ADVANTAGES:

- high flexibility; up to 300% elongation with 100% recovery
- retains flexibility at low temperatures to -40°C
- low dirt pick up (wall remains cleaner even in high pollution areas)
- easy to apply
- ready-mixed; economical
- excellent adhesion to cementitious substrates
- permeable; allows wall to breathe and trapped water vapour in wall to evaporate
- long term weatherability
- excellent resistance to ultraviolet rays
- colourfast
- permanently bridges existing minor cracks

LIMITATIONS:

DUREX EMC is not recommended for use:

- when ambient, surface and material temperatures are below 5°C (41°F) during application and curing period
- over surfaces previously coated with an oil based paint or high gloss paint without the use of a primer

APPLICATION:

DO NOT SUBSTITUTE NOR COMPENSATE **DUREX EMC** WITH WATER OR OTHER ADDITIVES.

Substrate must be dry, solid, clean and sound, free of weak and powdery surfaces, dust, dirt, oil, grease and other deleterious materials detrimental to a positive bond.

Check with **Durabond Products Limited** for questionable substrates.

Clean substrate surfaces by sandblasting or high pressure water blasting.

Apply a coat of **Durex Dur-X-Cel Primer** on all new concrete surfaces and chalky, mineral and/or weak concrete surfaces.

Thoroughly stir **DUREX EMC** within its' own pail before each use. Discard all frozen materials, materials which have formed solid lumps at the bottom of the container and materials which do not appear to be of a homogeneous viscosity.

Using a 6.4 mm (1/4") pile roller dip roller into stirred pail of material. Apply the coating with several passes of the roller, evenly spreading the coating over the entire substrate surface.

Ensure that the final stroke of the roller is always in

EMC

the same direction and with the same pressure applied to the roller.

Carefully organize the work with sufficient available tradesmen in order to complete an entire section from natural break point to natural break point. AVOID STOP AND START LINES WITHIN ANY ONE SECTION.

Apply **DUREX EMC** in a minimum number of 2 coats, each coat to a minimum of 0.25 mm (10 mils) wet film thickness. The final total dry film thickness shall be a minimum of 0.25 mm (10 mils).

Allow each coat to be tack free prior to applying succeeding coat. Apply a maximum of 2 coats within a 24 hours period.

Protect freshly applied coating from inclement weather until coating has fully set and cured.

CLEAN-UP:

Clean all tools promptly after each use with clean water. Do not allow the product to dry on tools.

Durex Cleaning Solution CS-100 is available to aid cleaning of soiled areas where the **DUREX EMC** has dried.

STORAGE:

Store **DUREX EMC** in a dry, vented, waterproof location, stacked off the ground with ambient temperatures above 5°C (41°F). Keep materials dry, protected from rapid temperature changes, dampness and moisture and away from direct

sunlight. KEEP FROM FREEZING.

PACKAGING:

DUREX EMC is packaged in 25 kg pails. **DUREX EMC** is available in 28 standard colours. Custom colour matching is available upon request at a slight additional charge.

COVERAGE:

6.15 m²/L (250 ft²/gal.) first coat
6.15 m²/L (250 ft²/gal.) second coat
(Allow 500 ft²/pail for two coats)

Coverage rate will vary according to the porosity and roughness of the surface being coated. Very rough or porous surfaces may require more than 2 coats to provide the required minimum 10 mils dry film thickness.

WARRANTY:

Durabond Products Limited fully warrants their products when used and applied in strict accordance with the printed instructions on product mixing and product application. In any case **Durabond's** responsibility shall not exceed either the refund of the purchase price, or the replacement of the purchased product.

TECHNICAL SERVICES:

Technical assistance for unique applications and design is available upon request from **Durabond Products Limited**.

DURAbOND

Manufacturers and Distributors of High Quality Construction Products

55 Underwriters Road, Toronto, Ontario M1R 3B4

Tel: (416) 759-4474 Toll Free: 1-877-DURABOND (387-2266) Fax: (416) 759-4470

Email: info@durabond.com Website: www.durabond.com

Roltex

Acrylic High Build Protective & Decorative Coating

Durex® Architectural Coatings



PRODUCT DESCRIPTION:

DUREX ROLTEX is a 100% acrylic based high build protective coating. It is one in the family of **Durex Architectural Wall Coatings**.

USES:

DUREX ROLTEX, in a two coat application is an effective long wearing protective coating for new as well as existing solid substrates.

DUREX ROLTEX provides a uniform appearance in both colour and texture.

ADVANTAGES:

DUREX ROLTEX provides the following features:

- exceptional durability
- excellent water repellency; protects surfaces from moisture penetration
- breathable coating; allows water vapour within the wall system to evaporate
- excellent adhesion to substrate
- abrasion resistant
- colourfast; not affected by ultra-violet rays

LIMITATIONS:

DUREX ROLTEX is not recommended for use:

- over previously treated surfaces without proper preparation
- surfaces where forming oils are still present
- when ambient, surface and material temperatures are below 5°C (41°F) during application and curing period.

APPLICATION:

DO NOT SUBSTITUTE NOR COMPENSATE **DUREX ROLTEX** WITH WATER OR OTHER ADDITIVES.

Substrate must be dry, solid, clean and sound, free of weak and powdery surfaces, dust, dirt, oil, grease and other deleterious materials detrimental to a positive bond.

Check with **Durabond Products Limited** for questionable surfaces.

Clean substrate surfaces by wire brushing or other methods approved by **Durabond Products Limited**. If necessary clean existing substrate surfaces by sandblasting or high pressure water blasting.

Thoroughly stir **DUREX ROLTEX** within its' own pail before each use. Discard all frozen materials, materials which have formed solid lumps at the bottom of the container and materials which do not appear to be of a homogeneous viscosity.

Using a specially designed medium or coarse grain foam texture roller, apply the coating with several passes of the roller, evenly spreading the coating over the entire substrate surface.

Ensure that the final stroke of the roller is always in the same direction and with the same even pressure applied to the roller.

Carefully organize the work with sufficient available tradesmen in order to complete an entire section from natural break point to natural break point. AVOID STOP AND START LINES WITHIN ANY ONE SECTION.

Protect freshly applied coating from inclement

Roltex

weather until coating has fully set and cured. Allow a minimum of 24 hours for curing between coats.

CLEAN-UP:

Clean all tools promptly after use with clean water. Do not allow mixes to dry on tools. **Durex Cleaning Solution CS-100** is available to aid cleaning of soiled areas where the **DUREX ROLTEX** has dried.

STORAGE:

Store **DUREX ROLTEX** on a dry, vented, waterproof location, stacked off the ground with ambient temperatures above 5°C (41°F). Keep materials dry, protected from rapid temperature changes, dampness and moisture and away from direct sunlight. KEEP FROM FREEZING.

PACKAGING:

DUREX ROLTEX is available in 28 standard colours. Custom colour matching is available upon

request at a slight charge. **DUREX ROLTEX** is packaged in 25 kg pails.

COVERAGE:

Coverage will vary according to the porosity of the substrate.

Average coverage:

one coat: 1.23 m²/L (60 ft²/gal.)

WARRANTY:

Durabond Products Limited fully warrants their products when used and applied in strict accordance with the printed instructions on product mixing and product application. In any case **Durabond's** responsibility shall not exceed either the refund of the purchase price, or the replacement of the purchased product.

TECHNICAL SERVICES:

Technical assistance for unique applications and design is available upon request from **Durabond Products Limited**.

DURABOND

Manufacturers and Distributors of High Quality Construction Products

55 Underwriters Road, Toronto, Ontario M1R 3B4

Tel: (416) 759-4474 Toll Free: 1-877-DURABOND (387-2266) Fax: (416) 759-4470

Email: info@durabond.com Website: www.durabond.com

TRIM SPRAY

Acrylic High Build Multi-Coloured Decorative Coating

Durex® Architectural Coatings



PRODUCT DESCRIPTION:

DUREX TRIM SPRAY is a high build, multi-coloured, protective coating consisting of coloured quartz aggregates embedded in a clear, 100% acrylic resin. It is one of the coatings in the family of the **Durex Architectural Wall Coatings**.

USES:

DUREX TRIM SPRAY is used as an effective long wearing protective coating over all types of solid substrates. **DUREX TRIM SPRAY** is specially designed to provide a fine textured finish on architectural trim/mouldings and it is mixed to match selected colours.

ADVANTAGES:

- exceptional durability
- excellent water repellency; protects surfaces from moisture penetration
- breathable coating; allows water vapour within the wall system to evaporate
- excellent adhesion to substrate
- colourfast; not affected by ultra-violet rays

LIMITATIONS:

DUREX TRIM SPRAY is not recommended for use:

- over previously treated surfaces without proper preparation
- surfaces where oils and other contaminants are present
- when ambient, surface and material temperatures are below 5°C (41°F) during application and curing period

APPLICATION:

DO NOT SUBSTITUTE NOR COMPENSATE **DUREX TRIM SPRAY** WITH WATER OR OTHER ADDITIVES.

Thoroughly mix **DUREX TRIM SPRAY** in its' own pail before each use. Discard all frozen materials, materials which have formed solid lumps at the bottom of the container and materials which do not appear to be of a homogeneous viscosity.

Substrate must be dry, solid and sound, free of weak and powdery surfaces, free from ice, snow, dew and frost, oil, grease releasing agents and other deleterious materials detrimental to a positive bond.

Check with **Durabond Products Limited** for questionable surfaces.

Application of the **DUREX TRIM SPRAY** shall be executed by a team of at least 2 tradesmen. While one tradesman sprays the coating on the wall the second tradesman following shall supply the coating material to the applicator and shall ensure that all masking remains in place.

The process of applying the **DUREX TRIM SPRAY** coating shall be continuous from the starting point to a natural break point, such as expansion/control joints and corners.

Apply **DUREX TRIM SPRAY** using a Goldblatt pattern pistol and compressor, or equivalent equipment.

Final texture will be affected by the viscosity of the coating, the type of spray gun and size of orifice used and the amount and velocity of air delivered by the compressor.

TRIM SPRAY

Set up spraying equipment to **Durabond's** recommendations and test apply the coating in a small area to match the approved mock-up sample. **DO NOT BEGIN APPLICATION BEFORE EQUIPMENT HAS BEEN PROPERLY SET UP.**

Apply the **DUREX TRIM SPRAY** in minimum two (2) light coats. Hold the spray gun perpendicular, between 450 mm - 600 mm (18" to 24") away from the substrate surface. Apply first light coat evenly throughout at a rate of 1.3 sq. m/litre (60 sq. ft./gal.). Allow a minimum of 15 minutes drying time between coats, depending on ambient conditions. Repeat application until desired texture has been achieved.

Movement of the spray gun during the application process shall be smooth, steady and continuous to achieve an even texture throughout. Avoid excessive build up in anyone area. Final coat coverage shall not be more than 0.6 sq. m./litre (30 sq. ft./gal.).

Allow a minimum of 24 hours for final full curing. Protect freshly applied coating from inclement weather until coating has fully set and cured. Prevent rapid evaporation.

CLEAN-UP:

Clean all tools promptly after each use with clean water. Do not allow mixes to dry on tools.

Durex Cleaning Solution CS-100 is available to aid cleaning of soiled areas where the **DUREX TRIM SPRAY** has dried.

STORAGE:

Store **DUREX TRIM SPRAY** in a dry, vented, waterproof location, stacked off the ground with ambient temperatures above 5°C (41°F). Keep materials dry, protected from rapid temperature changes, dampness and moisture and away from direct sunlight. **KEEP FROM FREEZING.**

PACKAGING:

DUREX TRIM SPRAY is readily available in an assortment of 28 colour schemes. **DUREX TRIM SPRAY** is packaged in 30 kg pails.

COVERAGE:

Average coverage: 18.58 m²/pail (200 ft²/pail)

WARRANTY:

Durabond Products Limited fully warrants their products when used and applied in strict accordance with the printed instructions on product mixing and product application. In any case **Durabond's** responsibility shall not exceed either the refund of the purchase price, or the replacement of the purchased product.

TECHNICAL SERVICES:

Technical assistance for unique applications and design is available upon request from **Durabond Products Limited.**

DURAbOND

Manufacturers and Distributors of High Quality Construction Products

55 Underwriters Road, Toronto, Ontario M1R 3B4

Tel: (416) 759-4474 Toll Free: 1-877-DURABOND (387-2266) Fax: (416) 759-4470

Email: info@durabond.com Website: www.durabond.com

STUCCO SPRAY

Acrylic High Build Multi-Coloured Decorative Coating

Durex® Architectural Coatings



PRODUCT DESCRIPTION:

DUREX STUCCO SPRAY is a high build, multi-coloured, protective coating consisting of coloured quartz aggregates embedded in a clear, 100% acrylic resin. It is one of the coatings in the family of the **Durex Architectural Wall Coatings**.

USES:

DUREX STUCCO SPRAY is used as an effective long wearing protective coating over all types of solid substrates. **DUREX STUCCO SPRAY** is mixed to match selected colours.

ADVANTAGES:

- exceptional durability
- excellent water repellency; protects surfaces from moisture penetration
- breathable coating; allows water vapour within the wall system to evaporate
- excellent adhesion to substrate
- colourfast; not affected by ultra-violet rays

LIMITATIONS:

DUREX STUCCO SPRAY is not recommended for use:

- over previously treated surfaces without proper preparation
- surfaces where oils and other contaminants are present
- when ambient, surface and material temperatures are below 5°C (41°F) during application and curing period

APPLICATION:

DO NOT SUBSTITUTE NOR COMPENSATE **DUREX STUCCO SPRAY** WITH WATER OR OTHER ADDITIVES.

Thoroughly mix **DUREX STUCCO SPRAY** in its' own pail before each use. Discard all frozen materials, materials which have formed solid lumps at the bottom of the container and materials which do not appear to be of a homogeneous viscosity.

Substrate must be dry, solid and sound, free of weak and powdery surfaces, free from ice, snow, dew and frost, oil, grease releasing agents and other deleterious materials detrimental to a positive bond.

Check with **Durabond Products Limited** for questionable surfaces.

Application of the **DUREX STUCCO SPRAY** shall be executed by a team of at least 2 tradesmen. While one tradesman sprays the coating on the wall the second tradesman following shall supply the coating material to the applicator and shall ensure that all masking remains in place.

The process of applying the **DUREX STUCCO SPRAY** coating shall be continuous from the starting point to a natural break point, such as expansion/control joints and corners.

Apply **DUREX STUCCO SPRAY** using a Goldblatt pattern pistol and compressor, or equivalent equipment.

Final texture will be affected by the viscosity of the coating, the type of spray gun and size of orifice used and the amount and velocity of air delivered by the compressor.

STUCCO SPRAY

Set up spraying equipment to **Durabond's** recommendations and test apply the coating in a small area to match the approved mock-up sample. **DO NOT BEGIN APPLICATION BEFORE EQUIPMENT HAS BEEN PROPERLY SET UP.**

Apply the **DUREX STUCCO SPRAY** in minimum two (2) light coats. Hold the spray gun perpendicular, between 450 mm - 600 mm (18" to 24") away from the substrate surface. Apply first light coat evenly throughout at a rate of 1.3 sq. m/litre (60 sq. ft./gal.). Allow a minimum of 15 minutes drying time between coats, depending on ambient conditions. Repeat application until desired texture has been achieved.

Movement of the spray gun during the application process shall be smooth, steady and continuous to achieve an even texture throughout. Avoid excessive build up in anyone area. Final coat coverage shall not be more than 0.6 sq. m./litre (30 sq. ft./gal.).

Allow a minimum of 24 hours for final full curing. Protect freshly applied coating from inclement weather until coating has fully set and cured. Prevent rapid evaporation.

CLEAN UP:

Clean all tools promptly after each use with clean water. Do not allow mixes to dry on tools. **Durex Cleaning Solution CS-100** is available to aid cleaning of soiled areas where the **DUREX STUCCO SPRAY** has dried.

STORAGE:

Store **DUREX STUCCO SPRAY** in a dry, vented, waterproof location, stacked off the ground with ambient temperatures above 5°C (41°F). Keep materials dry, protected from rapid temperature changes, dampness and moisture and away from direct sunlight. **KEEP FROM FREEZING.**

PACKAGING:

DUREX STUCCO SPRAY is readily available in an assortment of 28 colour schemes. **DUREX STUCCO SPRAY** is packaged in 30 kg pails.

COVERAGE:

Average coverage: 14.86 m²/pail (160 ft²/pail)

Stucco Spray Medium: 18.58 m²/pail (200 ft²/pail)

WARRANTY:

Durabond Products Limited fully warrants their products when used and applied in strict accordance with the printed instructions on product mixing and product application. In any case **Durabond's** responsibility shall not exceed either the refund of the purchase price, or the replacement of the purchased product.

TECHNICAL SERVICES:

Technical assistance for unique applications and design is available upon request from **Durabond Products Limited.**

DURAbOND

Manufacturers and Distributors of High Quality Construction Products

55 Underwriters Road, Toronto, Ontario M1R 3B4

Tel: (416) 759-4474 Toll Free: 1-877-DURABOND (387-2266) Fax: (416) 759-4470

Email: info@durabond.com Website: www.durabond.com

GRANITE

Acrylic High Build Multi-Coloured Decorative Coating

Durex® Architectural Coatings



PRODUCT DESCRIPTION:

DUREX GRANITE is a high build, multi-coloured, protective coating consisting of coloured ceramic beads embedded in a clear, 100% acrylic resin. It is the most visual of the **Durex Architectural Coatings**.

USES:

DUREX GRANITE is used as an effective long wearing protective coating over all types of solid substrates. **DUREX GRANITE** is mixed to match selected colours.

ADVANTAGES:

- exceptional durability
- excellent water repellency; protects surfaces from moisture penetration
- breathable coating; allows water vapour within the wall system to evaporate
- excellent adhesion to substrate
- colourfast, not affected by ultra-violet rays

LIMITATIONS:

DUREX GRANITE is not recommended for use:

- over previously treated surfaces without proper preparation
- surfaces where oils and other contaminants are present
- when ambient, surface and material temperatures are below 5°C (41°F) during application and curing period

APPLICATION:

DO NOT SUBSTITUTE NOR COMPENSATE **DUREX GRANITE** WITH WATER OR OTHER ADDITIVES.

Thoroughly mix **DUREX GRANITE** in its own pail before each use. Discard all frozen materials, materials which have formed solid lumps at the bottom of the container and materials which do not appear to be of a homogeneous viscosity.

Substrate must be dry, solid and sound, free of weak and powdery surfaces, free from ice, snow, dew and frost, oil, grease releasing agents and other deleterious materials detrimental to a positive bond.

Check with **Durabond Products Limited** for questionable surfaces.

Application of the **DUREX GRANITE** shall be executed by a team of at least 2 tradesmen. While one tradesman spreads the coating on the wall the second tradesman following shall float the freshly applied coating to the desired texture.

The process of applying and floating the **DUREX GRANITE** coating shall be continuous from the starting point to a natural break point, such as expansion/control joints and corners.

Using a stainless steel trowel spread the Durex finish onto the wall with upward strokes of the trowel. Hold the trowel at a 20-25 degree angle to the wall for better spreadability.

Apply sufficient pressure to provide an even and consistent layer of coating equivalent to the thickness of the largest (sphere-like) quartz aggregate in the mix.

GRANITE

Using a plastic trowel begin the floating process in a continuous circular motion of approximately 300 mm - 350 mm (12"-14") in diameter per stroke immediately after the coating has been freshly applied. Keep a wet edge. Do not allow the freshly applied coating to form a surface film before beginning the floating process.

Allow a minimum of 24 hours for curing. Protect freshly applied coating from inclement weather until coating has fully set and cured. Prevent rapid evaporation.

CLEAN-UP:

Clean all tools promptly after each use with clean water. Do not allow mixes to dry on tools. **Durex Cleaning Solution CS-100** is available to aid cleaning of soiled areas where the **DUREX GRANITE** has dried.

STORAGE:

Store **DUREX GRANITE** in a dry, vented, waterproof location, stacked off the ground with ambient temperatures above 5°C (41°F). Keep materials dry, protected from rapid temperature changes, dampness and moisture and away from direct sunlight. KEEP FROM FREEZING.

PACKAGING:

DUREX GRANITE is readily available in an assortment of 12 colour schemes. **DUREX GRANITE** is packaged in 30 kg pails.

COVERAGE:

Average coverage:

one coat -	18.5 m ² /pail (200 ft ² / pail)
two coats combined -	9.25 m ² /pail (100 ft ² /pail)

WARRANTY:

Durabond Products Limited fully warrants their products when used and applied in strict accordance with the printed instructions on product mixing and product application. In any case **Durabond's** responsibility shall not exceed either the refund of the purchase price, or the replacement of the purchased product.

TECHNICAL SERVICES:

Technical assistance for unique applications and design is available upon request from **Durabond Products Ltd.**

DURAbOND

Manufacturers and Distributors of High Quality Construction Products

55 Underwriters Road, Toronto, Ontario M1R 3B4

Tel: (416) 759-4474 Toll Free: 1-877-DURABOND (387-2266) Fax: (416) 759-4470

Email: info@durabond.com Website: www.durabond.com

STONETEX

Acrylic High Build Multi-Coloured Decorative Coating

Durex® Architectural Coatings



PRODUCT DESCRIPTION:

DUREX STONETEX is a high build, multi-coloured, protective coating consisting of coloured natural stone chips embedded in a clear, 100% acrylic resin. It is the most visual of the **Durex Architectural Coatings**.

USES:

DUREX STONETEX is used as an effective long wearing protective coating over all types of solid substrates. **DUREX STONETEX** is mixed to match selected colours.

ADVANTAGES:

- exceptional durability
- excellent water repellency; protects surfaces from moisture penetration
- breathable coating; allows water vapour within the wall system to evaporate
- excellent adhesion to substrate
- colourfast, not affected by ultra-violet rays

LIMITATIONS:

DUREX STONETEX is not recommended for use:

- over previously treated surfaces without proper preparation
- surfaces where oils and other contaminants are present
- when ambient, surface and material temperatures are below 5°C (41°F) during application and curing period

APPLICATION:

DO NOT SUBSTITUTE NOR COMPENSATE DUREX STONETEX WITH WATER OR OTHER ADDITIVES.

Thoroughly mix **DUREX STONETEX** in its own pail before each use. Discard all frozen material, materials which have formed solid lumps at the bottom of the container and materials which do not appear to be of a homogeneous viscosity.

Substrate must be dry, solid and sound, free of weak and powdery surfaces, free from ice, snow, dew and frost, oil, grease releasing agents and other deleterious materials detrimental to a positive bond.

Check with **Durabond Products Limited** for questionable surfaces.

Application of the **DUREX STONETEX** shall be executed by a team of at least 2 tradesmen. While one tradesman spreads the coating on the wall the second tradesman following shall float the freshly applied coating to the desired texture.

The process of applying and floating the **DUREX STONETEX** coating shall be continuous from the starting point to a natural break point, such as expansion/control joints and corners.

Using a stainless steel trowel spread the Durex finish onto the wall with upward strokes of the trowel. Hold the trowel at a 20-25 degree angle to the wall for better spreadability.

Apply sufficient pressure to provide an even and

STONETEX

consistent layer of coating equivalent to the thickness of the largest (sphere-like) stone chip in the mix.

Using a plastic trowel begin the floating process in a continuous circular motion of approximately 300 mm - 350 mm (12"-14") in diameter per stroke immediately after the coating has been freshly applied. Keep a wet edge. Do not allow the freshly applied coating to form a surface film before beginning the floating process.

Allow a minimum of 24 hours for curing. Protect freshly applied coating from inclement weather until coating has fully set and cured. Prevent rapid evaporation.

CLEAN-UP:

Clean all tools promptly after use with clean water. Do not allow mixes to dry on tools. **Durex Cleaning Solution CS-100** is available to aid cleaning of soiled areas where the **DUREX STONETEX** has dried.

STORAGE:

Store **DUREX STONETEX** in a dry, vented, waterproof location, stacked off the ground with ambient temperatures above 5°C (41°F). Keep

materials dry, protected from dampness and moisture and away from direct sunlight. KEEP FROM FREEZING.

PACKAGING:

DUREX STONETEX is readily available in an assortment of 12 colour schemes. **DUREX STONETEX** is packaged in 30 kg pails.

COVERAGE:

Average coverage:
one coat - 6.0 m²/pail (65 ft²/ pail)

WARRANTY:

Durabond Products Limited fully warrants their products when used and applied in strict accordance with the printed instructions on product mixing and product application. In any case **Durabond's** responsibility shall not exceed either the refund of the purchase price, or the replacement of the purchased product.

TECHNICAL SERVICES:

Technical assistance for unique applications and design is available upon request from **Durabond Products Ltd.**

DURAbOND

Manufacturers and Distributors of High Quality Construction Products

55 Underwriters Road, Toronto, Ontario M1R 3B4

Tel: (416) 759-4474 Toll Free: 1-877-DURABOND (387-2266) Fax: (416) 759-4470

Email: info@durabond.com Website: www.durabond.com

Rasato

Acrylic High Build Multi-Coloured Decorative Coating

Durex® Architectural Coatings



PRODUCT DESCRIPTION:

DUREX RASATO is a premixed 100% acrylic based coating which is offered in standard colours as well as custom colours. Available in Fine, Course or Glazer Finish. The finishing touch that adds lasting colour and texture to exterior and interior walls. **DUREX RASATO** will remain cleaner over a longer duration with improved dirt pickup resistant chemistry.

USES:

DUREX RASATO is a durable coating, which provides surface colour and texture for **Durabond Products Limited**. The finish is also suitable for interior applications. **DUREX RASATO** is trowel applied.

ADVANTAGES:

- exceptional durability
- excellent water repellency; protects surfaces from moisture penetration
- breathable coating; allows water vapour within the wall system to evaporate
- excellent adhesion to substrate
- colourfast; not affected by ultra-violet rays

LIMITATIONS:

DUREX RASATO is not recommended for use:

- over previously treated surfaces without proper preparation
- surfaces where oils and other contaminants are present

- when ambient, surface and material temperatures are below 5°C (41°F) during application and curing period

APPLICATION:

DO NOT SUBSTITUTE NOR COMPENSATE **DUREX RASATO** WITH WATER OR OTHER ADDITIVES.

Thoroughly mix **DUREX RASATO** in its own pail before each use. Discard all frozen materials, materials which have formed solid lumps at the bottom of the container and materials which do not appear to be of a homogeneous viscosity.

Substrate must be dry, solid and sound, free of weak and powdery surfaces, free from ice, snow, dew and frost, oil, grease releasing agents and other deleterious materials detrimental to a positive bond.

Check with **Durabond Products Limited** for questionable surfaces.

Application of the **DUREX RASATO** should be executed by a team of at least 2 tradesmen. While one tradesman spreads the coating on the wall the second tradesman following should float the freshly applied coating to the desired texture.

Trowel the first coat of **DUREX RASATO** onto the wall with upward strokes. Smooth the freshly applied material into a tight uniform finish with steel trowel. When dry, apply another smooth even coat and float. Flatten the finish with steel trowel or plastic float just before it dries, at the stage when the finish is not sticky to the trowel. Application technique should be consistent over the entire area to create a uniform look.



Rasato



Rasato Antico



Rasato Rustico

To create more depth and to resemble natural limestone, apply glaze over the dried **DUREX RASATO** of matching colour.

Glaze is a translucent medium with very long open-time. It is used in complex techniques requiring longer time to be manipulated to build up colours. It is applied over coloured paint or texture base to create more visual depth.

Allow a minimum of 24 hours for curing. Protect freshly applied coating from inclement weather until coating has fully set and cured. Prevent rapid evaporation.

CLEAN-UP:

Clean all tools promptly after each use with clean water. Do not allow mixes to dry on tools. **Durex Cleaning Solution CS-100** is available to aid cleaning of soiled areas where the **DUREX RASATO** has dried.

STORAGE:

Store **DUREX RASATO** in a dry, vented, waterproof location, stacked off the ground with ambient temperatures above 5°C (41°F). Keep materials dry, protected from rapid temperature changes, dampness and moisture and away from direct sunlight. **KEEP FROM FREEZING.**

PACKAGING:

DUREX RASATO is readily available in an assortment of 28 colour schemes. **DUREX RASATO** is packaged in 30 kg pails.

COVERAGE:

Average coverage:
14.0 m²/pail (150 ft²/pail)

WARRANTY:

Durabond Products Limited fully warrants their products when used and applied in strict accordance with the printed instructions on product mixing and product application. In any case **Durabond's** responsibility shall not exceed either the refund of the purchase price, or the replacement of the purchased product.

TECHNICAL SERVICES:

Technical assistance for unique applications and design is available upon request from **Durabond Products Limited.**



Manufacturers and Distributors of High Quality Construction Products

55 Underwriters Road, Toronto, Ontario M1R 3B4

Tel: (416) 759-4474 Toll Free: 1-877-DURABOND (387-2266) Fax: (416) 759-4470

Email: info@durabond.com Website: www.durabond.com

Gemstone

Acrylic High Build Multi-Coloured Decorative Coating

Durex® Architectural Coatings



PRODUCT DESCRIPTION:

DUREX GEMSTONE is a high build, multi-coloured, protective and decorative coating consisting of coloured aggregates and oversized mica flakes, embedded in a clear, 100% acrylic resin. Its distinctive features allow the designer to create attractive and unique surfaces.

USES:

DUREX GEMSTONE is used with any of the Durex EIF systems, as well as with any of the Durex Non-Insulated Wall Systems. As well, it can be used as the finish coat on tilt-up panels or precast walls.

DUREX GEMSTONE is also ideal for interior use to turn any common wall into a work of art.

ADVANTAGES:

- exceptional durability
- excellent water repellency; protects surfaces from moisture penetration
- breathable coating; allows water vapour within the wall system to evaporate
- excellent adhesion to substrate
- colourfast, not affected by ultra-violet rays

LIMITATIONS:

DUREX GEMSTONE is not recommended for use:

- over previously treated surfaces without proper preparation
- surfaces where oils and other contaminants are present
- when ambient, surface and material

temperatures are below 5°C (41°F) during application and curing period

APPLICATION:

DO NOT SUBSTITUTE NOR COMPENSATE DUREX STONETEX WITH WATER OR OTHER ADDITIVES.

Thoroughly mix **DUREX GEMSTONE** in its own pail before each use. Discard all frozen material, materials which have formed solid lumps at the bottom of the container and materials which do not appear to be of a homogeneous viscosity.

Substrate must be dry, solid and sound, free of weak and powdery surfaces, free from ice, snow, dew and frost, oil, grease releasing agents and other deleterious materials detrimental to a positive bond.

Check with **Durabond Products Limited** for questionable surfaces.

Application of the **DUREX GEMSTONE** shall be executed by a team of at least 2 tradesmen. While one tradesman spreads the coating on the wall the second tradesman following shall float the freshly applied coating to the desired texture.

Paint the substrate with a matching Brushcoat primer and dry thoroughly. Trowel evenly to about the largest aggregate thickness. Float lightly over the finish several times keeping the float clean during the process. This will expose the large mica flakes.

Using a stainless steel trowel spread the Durex finish onto the wall with upward strokes of the trowel. Hold the trowel at a 20-25 degree angle to the wall for better spreadability.

Apply sufficient pressure to provide an even and



Gemstone

consistent layer of coating equivalent to the thickness of the largest (sphere-like) stone chip in the mix.

Using a plastic trowel begin the floating process in a continuous circular motion of approximately 300 mm - 350 mm (12"-14") in diameter per stroke immediately after the coating has been freshly applied. Keep a wet edge. Do not allow the freshly applied coating to form a surface film before beginning the floating process.

Allow a minimum of 24 hours for curing. Protect freshly applied coating from inclement weather until coating has fully set and cured. Prevent rapid evaporation.

CLEAN-UP:

Clean all tools promptly after use with clean water. Do not allow mixes to dry on tools. **Durex Cleaning Solution CS-100** is available to aid cleaning of soiled areas where the **DUREX GEMSTONE** has dried.

STORAGE:

Store **DUREX GEMSTONE** in a dry, vented, waterproof location, stacked off the ground with ambient temperatures above 5°C (41°F). Keep materials dry, protected from dampness and moisture and away from direct sunlight. **KEEP FROM FREEZING.**

PACKAGING:

DUREX GEMSTONE is readily available in an assortment of 12 colour schemes. **DUREX GEMSTONE** is packaged in 30 kg pails.

COVERAGE:

Average coverage:
one coat - 11.15m²/pail (120ft²/ pail)

WARRANTY:

Durabond Products Limited fully warrants their products when used and applied in strict accordance with the printed instructions on product mixing and product application. In any case **Durabond's** responsibility shall not exceed either the refund of the purchase price, or the replacement of the purchased product.

TECHNICAL SERVICES:

Technical assistance for unique applications and design is available upon request from **Durabond Products Ltd.**

DURABOND

Manufacturers and Distributors of High Quality Construction Products

55 Underwriters Road, Toronto, Ontario M1R 3B4

Tel: (416) 759-4474 Toll Free: 1-877-DURABOND (387-2266) Fax: (416) 759-4470

Email: info@durabond.com Website: www.durabond.com



Acrylic High Build Multi-Coloured Decorative Coating

Durex® Architectural Coatings



PRODUCT DESCRIPTION:

DUREX AGGREG is a high build, multi-coloured, finish consisting of coloured natural stone embedded in a coloured, polymer modified cement base. The natural stone may be either crushed or rounded.

Exposed texturing aggregate can be selected, for size, colour and shape from standard Durex Agrex Selection chart

USES:

DUREX AGGREG is used to match precast concrete panels.

ADVANTAGES:

- exceptional durability
- excellent water repellency; protects surfaces from moisture penetration
- breathable coating; allows water vapour within the wall system to evaporate
- excellent adhesion to substrate

LIMITATIONS:

DUREX AGGREG is not recommended for use:

- over previously treated surfaces without proper preparation
- surfaces where oils and other contaminants

are present

- when ambient, surface and material temperatures are below 5°C (41°F) during application and curing period

APPLICATION:

Refer to **Durex Architectural Coatings** specification for application instructions.

Do not apply material to frozen base or base containing frost.

Do not apply wet material in temperatures less than 7 °C or above 35°C.

All products to be used into, or in conjunction with, the supplying and application of work covered in this decorative coating shall be manufactured, supplied and approved by **Durabond Products Ltd.**

CLEAN-UP:

Clean all tools promptly after use with clean water. Do not allow mixes to dry on tools.

STORAGE:

Store the **DUREX AGGREG** components in a dry, vented, waterproof location, stacked off the ground with ambient temperatures above 5°C (41°F).

Keep materials dry, protected from dampness and moisture and away from direct sunlight.

KEEP FROM FREEZING.



AGGREGEX

PACKAGING:

The aggregate for **DUREX AGGREGEX** is available in an assortment of colour schemes, packaged in 22.7 kg (50 lb) bags.

COVERAGE:

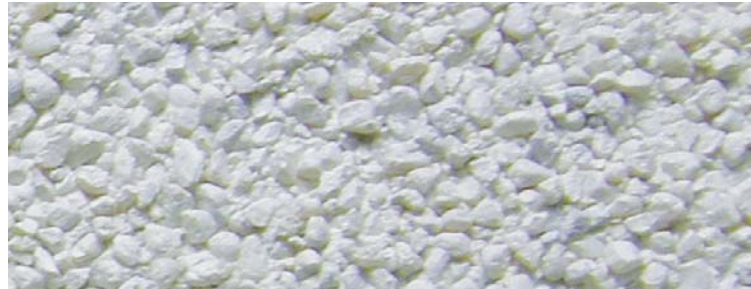
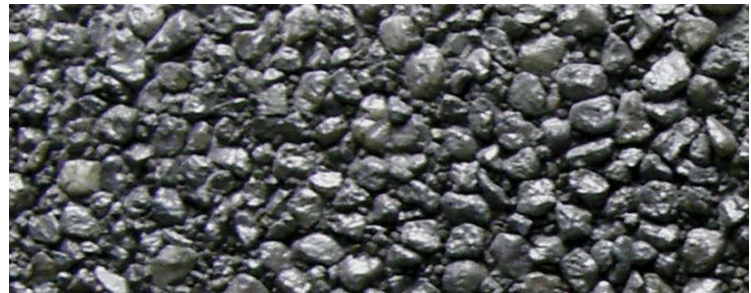
Average coverage: allow 4.5 kg (10 lb) of stone per 0.09 m² (1 ft²) of wall area.

WARRANTY:

Durabond Products Limited fully warrants their products when used and applied in strict accordance with the printed instructions on product mixing and product application. In any case **Durabond's** responsibility shall not exceed either the refund of the purchase price, or the replacement of the purchased product.

TECHNICAL SERVICES:

Technical assistance for unique applications and design is available upon request from **Durabond Products Ltd.**



DURabond

Manufacturers and Distributors of High Quality Construction Products

55 Underwriters Road, Toronto, Ontario M1R 3B4

Tel: (416) 759-4474 Toll Free: 1-877-DURABOND (387-2266) Fax: (416) 759-4470

Email: info@durabond.com Website: www.durabond.com

ART-I-STONE

Durex® Architectural Coatings

PRODUCT DESCRIPTION:

DUREX ART-I-STONE is a cementitious, two component polymer modified, flexible coating, which is suitable for both interior and exterior wall surfaces. This well balanced blend of selected aggregates and various types of cements, work in synergy to create beautiful textured and coloured patterns which replicate a wide range of finishes such as tile, stone, brick, slate, tile and many more.

USES:

DUREX ART-I-STONE can be used to coat concrete surfaces and a variety of wall surfaces such as gypsum wall-board, brick, concrete, cement board, fiber reinforced gypsum and many others. **DUREX ART-I-STONE's** wide range of styles can be used to decorate surfaces in homes, offices, restaurants, industrial and recreational spaces, fire places, retaining walls, and much more.

ADVANTAGES:

DUREX ART-I-STONE is offered in a number of standard textures, colours and patterns, however it can be custom-designed to meet even the most demanding design, landscaping or architectural needs. **DUREX ART-I-STONE** is seamless, unlike tile, brick, or any other shape or re-surfacing material. **DUREX ART-I-STONE** has been formulated with numerous ideal features to facilitate and simplify its use:

- Simple to use
- Excellent workability
- Low shrinkage
- Excellent compressive and flexural strength
- Excellent adhesion to a variety of substrates
- Excellent freeze-thaw stability

- Seamless application eliminates mismatched patterns or seams
- Completely washable with either soap and water or mild detergents
- Much less susceptible to lifting compared to tile
- Very easy to repair
- Very cost effective
- Very easy to maintain
- Offered in an infinite number of textures, colours and patterns

LIMITATIONS:

DUREX ART-I-STONE is not recommended for use:

- When ambient, surface and material temperatures are below 5°C (41°F) during application and curing period
- For applications which require a coating more than 9.5mm (3/8") thick
- For horizontal wood substrates with large deflection
- For leveling badly damaged substrates

MIXING PROCEDURE:

Mix **DUREX ART-I-STONE** with **Durex Art-I-Stone Liquid** in accordance with the following formula by weight:

1 bag 22.7 kg (50 lbs) **DUREX ART-I-STONE**
5 liters (140 oz) **Durex Art-I-Stone Liquid**

Pour **Durex Art-I-Stone Liquid** into a clean empty mixing container. While under slow mixing action add the **DUREX ART-I-STONE** in the required mixing proportions. Mix well until the mixture is free of lumps. Do not over-mix or use excessive mixing speed.

Let mixed material stand for a few minutes until they

ART-I-STONE

TILES

BRICKS

LINESTONES

FLAGSTONES

SPECIAL DESIGNS

CASTEL STONES

begin initial stiffening. Mix only enough material which can be used within 45 minutes. Re-temper and use. Discard all materials which have begun to stiffen for a second time.

APPLICATION:

Clean all areas to be coated by suitable means so the substrate is clean and sound, free of dust, dirt, oil, grease, paint or any other foreign matter which may be detrimental to a positive bond. Mark the specified pattern on the substrate to be coated using chalk or other means, which will leave any deleterious substance behind. Apply a coat of **Durex Art-I-Stone Liquid** to the clean, dry surface using a 6.4mm (1/4") high pile roller and allow it to dry for minimum 2 hours. Apply the mixed material to the primed surface using clean steel trowel to achieve the specified texture. Do not apply at a thickness greater than 6.5mm (1/4"). Allow a minimum of 24 hours for curing. Protect freshly material from inclement weather until it has fully set and cured. Prevent rapid evaporation.

Apply specified colour over cured material using a sponge, roller or brush to achieve desired look. Allow the colour to cure for a minimum 24 hours. Apply a minimum of 2 coats of **Durex Art-I-Stone Sealer** using a 6.5mm (1/4") high roller and allow to cure for a minimum 24 hours.

CLEAN-UP:

Clean all tools promptly after each use with clean water. Do not allow mixes to dry on tools.

STORAGE:

Store **DUREX ART-I-STONE**, **Art-I-Stone Liquid** and **Art-I-Stone Sealer** in a dry, vented, waterproof location, stacked off the ground with ambient temperatures above 5°C (41°F). Keep materials dry, protected from rapid temperature changes, dampness and moisture and away from direct sunlight. KEEP FROM FREEZING.

PACKAGING:

DUREX ART-I-STONE is packaged in 22.7kg (50lb) bags. **Durex Art-I-Stone Liquid** is packaged in 18.9 liter (5 gal.) pails. **Durex Art-I-Stone Sealer** is packaged in 3.75 liter (1gal.) units.

COVERAGE:

One bag of **DUREX ART-I-STONE** mixed with 5 liters (140 oz) of **Durex Art-I-Stone Liquid** covers approximately 4.65 m² (50 ft²) at a thickness of 3.2mm (1/8").

WARRANTY:

Durabond Products Limited fully warrants their products when used and applied in strict accordance with the printed instructions on product mixing and product application. In any case **Durabond's** responsibility shall not exceed either the refund of the purchase price, or the replacement of the purchased product.

TECHNICAL SERVICES:

Technical assistance for unique applications and design is available upon request from **Durabond Products Limited**.

DURABOND

Manufacturers and Distributors of High Quality Construction Products

55 Underwriters Road, Toronto, Ontario M1R 3B4

Tel: (416) 759-4474 Toll Free: 1-877-DURABOND (387-2266) Fax: (416) 759-4470

Email: info@durabond.com Website: www.durabond.com