

Durex®



DURabond **50**
YEARS
1967-2017

Contractor's Guide

Building Products & Solutions

**ARCHITECTURAL COATINGS &
DECORATIVE FINISHES**

Pushing the Envelope for Excellence

You have one thing on your mind when it comes to choosing building products & solutions – they have to do more than perform today; they have to outperform for the long term. That’s why for over 50 years, Durabond has been the choice for those who expect more.

We are a leading manufacturer and developer of Exterior Insulated Cladding Systems, Specialized Architectural Coatings, Concrete Restoration Products, Protective Coatings, and a wide range of other related construction products. Whether a high-rise building or a single-family dwelling, a new construction or a restoration project, we understand the critical importance of getting it right the first time.

Our innovative, highly-engineered and tested systems are a creative solution for architects and designers. We are a tried, true and trusted choice for builders, engineers and homeowners who demand durability, superior flexibility, and aesthetic beauty.



Application Method Legend

Use of Product



Recommended



Not Recommended



Safety Hazard

Application Methods



Trowel



Roller



Spray



Sponge





Architectural Coatings & Decorative Finishes

Durabond has an extensive line of Architectural Coatings and Plaster Products for your project, which are produced from top-quality 100% acrylic polymers, selected quartz aggregates and colour-fast inorganic pigments. Look to Durabond for a large variety of aesthetically pleasing, easy-to-apply, durable and tough finishes.

- Plaster Finishes,
Parging & Bases
- Architectural Coatings
- Specialty Finishes
- Coloured Quartz Finishes
- Rough & High-Build Finishes
- Interior Ceiling Coatings
- Decorative Plasters & Faux Finishes

112 Classic Finishes

- Durex Marble Coat 1.5
- Durex Marble Coat 1.0
- Durex Venecian
- Durex Pebble Float
- Durex Sandex
- Durex Trim Spray
- Durex Stucco Spray
- Durex Graffiato

117 Specialty Finishes

Flat Steel Trowel Finishes

- Durex Sandstone
- Durex Rasato
- Durex Rustico
- Durex Antico Glaze
- Durex Trowel Grade Stucco

Coloured Quartz and Metallic Finishes

- Durex Gemstone
- Durex Granite
- Durex Stonetex
- Durex Crystal Coat
- Durex Cromatex

Rough & High Build Finishes

- Durex Aggreg
- Durex Rough Cast
- Durex Decorative Stucco Ext
- Durex Monocapa
- Durex Monofino
- Durex Dur-A-Brick

126 Roller Applied Coatings

- Durex Brush Coat
- Durex EMC
- Durex Dur-X-Cel 100
- Durex Roltex
- Durex Kolor Gard

Elastomeric Coatings (FX)

- Durex Elastomeric Brush Coat
- Durex Elastomeric Graffiato
- Durex Elastomeric Marble Coat 1.0
- Durex Elastomeric Marble Coat 1.5
- Durex Elastomeric Sandex
- Durex Elastomeric Venecian

132 Decorative Plasters & Faux Finishes

- Acroplast Venetian Plaster
- Durex Super Stipple
- Crackle Size Basecoat
- Crackle Stone & Antique Topcoat
- Crackle Glaze
- Coraltex Metallic Hammer Tone
- Scumble Glaze
- Extender Glaze
- Suede Latex
- Metallic Paint
- Luster Plaster (Orystone)
- Acronament (Gesso)

138 Interior Ceiling Coatings

- Durex Texture Spray
- Durex Ceiling Coat
- Durex Plaster Bond Blue & White

Classic Finishes

These superior Architectural Finishes are a composition of classic and innovative products based on resins in emulsion or mineral binders with excellent weatherproofing qualities and overall durability in a wide range of finishes.

Possible Uses

Durex Architectural Coatings are used as a decorative and protective coating over all Durex Insulated and Non-Insulated Wall Systems as well as the final coating for masonry and concrete substrates.

Advantages

- High Flexibility
- Durable
- Vapour Permeable
- Excellent Adhesion to most substrates



DUREX MARBLE COAT 1.5

09 94 00

Acrylic Regular Marble Multi-Coloured Decorative Coating

DUREX MARBLE COAT 1.5 is a protective coating consisting of the same, yet slightly larger marble stone aggregates than MARBLE COAT 1.0. It is also embedded in a clear 100% acrylic resin and iron oxide pigments. Recommended when a uniformly textured surface is desired.

Possible Uses

DUREX MARBLE COAT is used as an effective long wearing protective coating over all types of solid substrates. It is mixed to match selected colours.

Application

All Marble Coat Finishes are applied by steel trowel and finished with a plastic float trowel.



ITEM #	ITEM NAME	PACKAGING	UNITS/PALLET	COVERAGE
010113	DUREX Marble Coat 1.5	30 kg/pail	48 pails/pallet	100-110 ft ² /pail

Classic Finishes

DUREX MARBLE COAT 1.0

09 94 00

Acrylic Medium Marble Multi-Coloured Decorative Coating



DUREX MARBLE COAT 1.0 is the smoothest of all Marble Coat finishes. This is a high build, multicoloured, protective coating consisting of marble stone aggregates embedded in a clear 100% acrylic resin and iron oxide pigments. It is one of the most popular finishes for all DUREX EIFS Wall Systems. Marble Coat 1.0 has a slightly smoother look than DUREX Marble Coat 1.5 and 1.8.

Possible Uses

DUREX MARBLE COAT is used as an effective long wearing protective coating over all types of solid substrates. It is mixed to match selected colours.

Application

All Marble Coat Finishes are applied by steel trowel and finished with a plastic float trowel.



ITEM #	ITEM NAME	PACKAGING	UNITS/PALLET	COVERAGE
010113M	DUREX Marble Coat 1.0	30 kg/pail	48 pails/pallet	110-120 ft ² /pail

DUREX VENECIAN

09 94 00

Acrylic Swirl Texture Multi-Coloured Decorative Coating



DUREX VENECIAN is a high build, multi-coloured, protective coating consisting of coloured quartz aggregates embedded in a clear, 100% acrylic resin. It is one of the coatings in the family of Durex Architectural Wall Coatings.

Possible Uses

DUREX VENECIAN is used as an effective long wearing protective coating over all types of solid substrates and is mixed to match selected colours.

Application

It is applied by steel trowel and finished with a plastic float trowel.



ITEM #	ITEM NAME	PACKAGING	UNITS/PALLET	COVERAGE
010115	DUREX Venecian	30 kg/pail	48 pails/pallet	120-140 ft ² /pail

Classic Finishes

DUREX PEBBLEFLOAT

09 94 00

Acrylic Uniform Pebble Multi-Coloured Decorative Coating



DUREX PEBBLE FLOAT is a high build, multi-coloured, protective coating consisting of coloured quartz aggregates embedded in a clear, 100% acrylic resin. It is one of the coatings in the family of the Durex Architectural Wall Coatings.

Possible Uses

DUREX PEBBLE FLOAT is used as an effective long wearing protective coating over all types of solid substrates. It is mixed to match selected colours.



ITEM #	ITEM NAME	PACKAGING	UNITS/PALLET	COVERAGE
010117	DUREX Pebble Float Finish	30 kg/pail	48 pails/pallet	95-110 ft ² /pail

DUREX SANDEX

09 94 00

Acrylic Fine Marble Multi-Coloured Decorative Coating



DUREX SANDEX is a high build, multi-coloured, protective coating consisting of coloured quartz aggregates embedded in a clear, 100% acrylic resin. It is one of the coatings in the family of the Durex Architectural Wall Coatings.

Possible Uses

DUREX SANDEX is used as an effective long wearing protective coating over all types of solid substrates and is mixed to match selected colours.



ITEM #	ITEM NAME	PACKAGING	UNITS/PALLET	COVERAGE
010114	DUREX Sandex	30 kg/pail	48 pails/pallet	140-150 ft ² /pail

Classic Finishes

DUREX TRIM SPRAY

09 94 00

Acrylic Multi-Coloured Decorative Trim Coating



DUREX TRIM SPRAY is a high build, multi-coloured, protective coating, consisting of coloured quartz aggregates embedded in a clear, 100% acrylic resin. It is one of the coatings in the family of the Durex Architectural Wall Coatings.

Possible Uses

DUREX TRIM SPRAY is used as an effective long wearing protective coating over all types of solid substrates. It is specially designed to provide a fine textured finish on architectural trim/mouldings. It is mixed to match selected colours.

Application

It is applied by steel trowel and finished with a plastic float trowel.



ITEM #	ITEM NAME	PACKAGING	UNITS/PALLET	COVERAGE
010112	DUREX Graffiato	30 kg/pail	48 pails/pallet	95-110 ft ² /pail

DUREX STUCCO SPRAY

09 94 00

Acrylic Spray Applied Multi-Coloured Decorative Coating



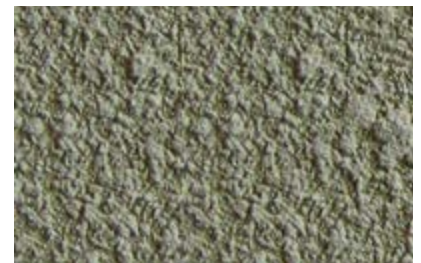
DUREX STUCCO SPRAY is a high build, multi-coloured, protective coating, consisting of coloured quartz aggregates embedded in a clear, 100% acrylic resin. It is one of the coatings in the family of the Durex Architectural Wall Coatings.

Possible Uses

DUREX STUCCO SPRAY is used as an effective long wearing protective coating over all types of solid substrates. It is mixed to match selected colours.

Application

Tape off unwanted area. Prime Wall with DUREX BRUSH COAT. Spray material with Spray Gun and Compressor.



ITEM #	ITEM NAME	PACKAGING	UNITS/PALLET	COVERAGE
010121	DUREX Stucco Spray	30 kg/pail	48 pails/pallet	150-200ft ² /pail

Classic Finishes

DUREX GRAFFIATO

09 94 00

Acrylic Coarse Lined Multi-Coloured Decorative Coating



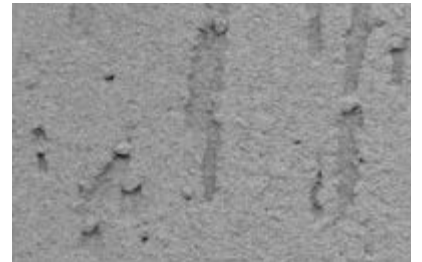
DUREX GRAFFIATO is a high build, multi-coloured, protective coating consisting of coloured quartz aggregates embedded in a clear, 100% acrylic resin. It is one of the coatings in the family of the Durex Architectural Wall Coatings.

Possible Uses

DUREX GRAFFIATO is used as an effective long wearing protective coating over all types of solid substrates. DUREX GRAFFIATO is mixed to match selected colours.

Application

It is applied by steel trowel and finished with a plastic float trowel.



ITEM #	ITEM NAME	PACKAGING	UNITS/PALLET	COVERAGE
010112	DUREX Graffiato	30 kg/pail	48 pails/pallet	95-110 ft ² /pail

Specialty Finishes - Flat Steel Trowel Finishes

DUREX SANDSTONE

09 94 00

Fine Texture Limestone Finish (Acrylic Based Coating)



This is the fine grade of Durex’s flat old style finishes with a modern touch. This flat, acrylic polymer based coating is formulated to emulate the sharp lines of casted concrete and cut limestone. It is ideal when applied on finer details and smaller areas when a classic flat-stone look is desired. Coating it with our DUREX ANTICO GLAZE alters its appearance to that of “Aged Stone.”

Application Guidelines

DUREX SANDSTONE is applied in two-steps: using Durex Sandbase as the first coat and DUREX SANDSTONE as the final coat. Sandbase is applied first using a standard steel trowel. Once fully cured, DUREX SANDSTONE is applied next using a special Inox Stainless Steel Trowel (page 201). Spread the product finely and wait 10-15 minutes for the product to set up. Once the product starts to get firm, lightly burnish the product with the Inox Stainless Steel Trowel.

Note: The final appearance of this product can be altered by the method of application. Feel free to experiment with different methods of finishing. This unique product is recommended for the skilled tradesperson.

Due to the fine nature of the product, trowel marks will appear when applied on large wall areas. Temperature, humidity and other factors will play a more significant role on this product than other textures.



ITEM #	ITEM NAME	PACKAGING	UNITS/PALLET	COVERAGE
010132	DUREX Sandstone	18.9 L/pail	48 pails/pallet	180 ft ² /pail
010132B	DUREX Sandbase	18.9 L/pail	48 pails/pallet	150 ft ² /pail

Specialty Finishes - Flat Steel Trowel Finishes

DUREX RASATO

09 94 00

Smooth Texture Stone Finish (Acrylic Based Coating)



This is the medium grade of Durex’s flat old style finishes. It is a 100% acrylic based architectural wall coating. The coating is similar to Rustico, but with slightly smaller aggregates to create a uniform, classic texture. Rasato is a finer finish that replicates the grandeur of classic Europe. Coating it with our DUREX ANTICO GLAZE alters its appearance to that of “Aged Stone.”

Application Guidelines

DUREX RASATO is applied in two-steps. The first coat of DUREX RASATO is applied first using a standard steel trowel. Once fully cured, apply another coat. Spread the product finely and wait 10-15 minutes for the product to set up. Once the product starts to get firm, lightly burnish the product with the Inox Stainless Steel Trowel.

Note: The final appearance of this product can be altered by the method of application.

Due to the fine nature of the product, trowel marks will appear when applied on large wall areas. Temperature, humidity and other factors will play a more significant role on this product than other textures.



ITEM #	ITEM NAME	PACKAGING	UNITS/PALLET	COVERAGE
010131	DUREX Rasato	18.9 L/pail	48 pails/pallet	150 ft ² /pail

DUREX RUSTICO

09 94 00

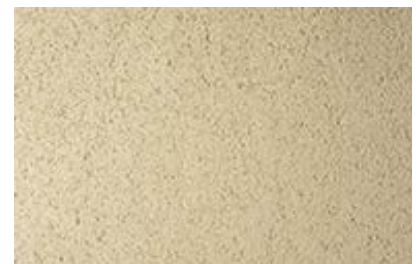
Semi-Smooth Stone Texture Finish (Acrylic Based Coating)



This is the coarse grade of Durex’s flat old style finishes. It is produced in a paste form resulting in an even satin-like finish on exterior and interior surfaces. DUREX RUSTICO is burnished with a steel trowel, adding to the rustic feel of the product. Coating it with our DUREX ANTICO GLAZE alters its appearance to that of “Aged Stone.”

Application Guidelines

DUREX RUSTICO is applied in a one-step application using a regular steel trowel.



ITEM #	ITEM NAME	PACKAGING	UNITS/PALLET	COVERAGE
010132	DUREX Sandstone	18.9 L/pail	48 pails/pallet	180 ft ² /pail
010132B	DUREX Sandbase	18.9 L/pail	48 pails/pallet	150 ft ² /pail

Specialty Finishes - Flat Steel Trowel Finishes

DUREX ANTICO GLAZE

09 94 00

Acrylic Translucent Exterior Glaze



ANTICO GLAZE is a fine, translucent glaze that simulates a natural aging effect. It is a durable, acrylic polymer liquid coating for use over all Durex finishes. Combine with DUREX RUSTICO, RASATO or SANDSTONE to achieve a luxurious two-tone finish. Use tone on tone, or off-tone colouring to obtain a surface with depth and complexity. ANTICO GLAZE can be tinted to virtually any colour, please refer to the Colour Chart for selection. Custom colour matching is available.

Application Guidelines

The product has a similar consistency to latex paints or even water. It is applied using a sponge, roller or sprayer.



ITEM #	ITEM NAME	PACKAGING	UNITS/PALLET	COVERAGE
010135	DUREX Antico Glaze	18.9 L/pail	48 pails/pallet	425 ft ² /pail
010135G	DUREX Antico Glaze (gallon)	3.78 L/gal		85 ft ² /gal

DUREX TROWEL GRADE STUCCO

09 94 00

Acrylic Freestyle Multi-Coloured Decorative Coating



DUREX TROWEL GRADE STUCCO is a high build, multi-coloured, protective coating consisting of coloured quartz aggregates embedded in a clear 100% acrylic resin. It is one of the coatings in the family of Durex Architectural Coatings.

Possible Uses

DUREX TROWEL GRADE STUCCO is used as an effective long wearing protective coating over all types of solid substrates. It is mixed to match selected colours and it can be applied as the final finish coating over all Durex EIF Systems or Durex Lite Coat and/or Durex Stucco Lite Wall Systems.



ITEM #	ITEM NAME	PACKAGING	UNITS/PALLET	COVERAGE
010121T	DUREX Trowel Grade Stucco	30 kg/pail	48 pails/pallet	150–200 ft ² /pail

Specialty Finishes - Coloured Quartz and Metallic Finishes

DUREX GEMSTONE

09 94 00

Multi-Coloured Aggregate Coating with Mica Flakes



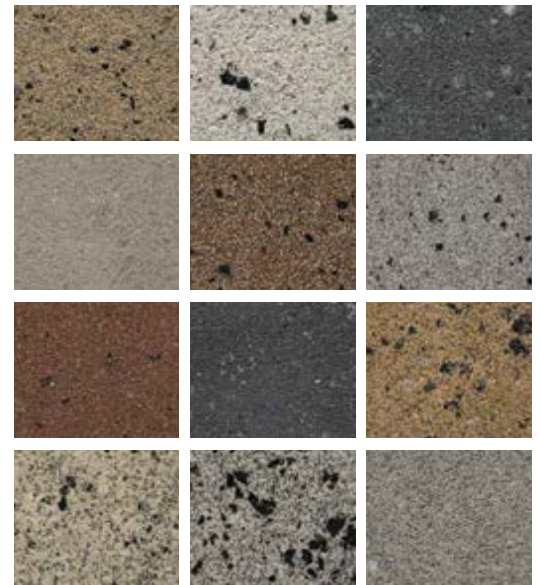
DUREX GEMSTONE is a high build, multi-coloured, protective and decorative coating consisting of coloured aggregates and oversized mica flakes, embedded in a clear, 100% acrylic resin. Its distinctive features allow the designer to create attractive and unique surfaces.

Must be primed with DUREX BRUSHCOAT. Steel Trowel Applied.

Application Guidelines

DUREX GEMSTONE is the most popular of Durex's coloured quartz finishes. The fine coloured aggregates combined with oversized Mica Flakes yields the striking appearance of granite or marble. The Mica Flakes shimmer in direct sunlight adding to the affect of the product.

ITEM #	ITEM NAME	PACKAGING	UNITS/PALLET	COVERAGE
010143	DUREX Gemstone	18.9 L/pail	48 pails/pallet	120 ft ² /pail



DUREX GRANITE

09 94 00

Multi-Coloured Aggregate Coating



DUREX GRANITE is a high build, multi-coloured, protective coating consisting of coloured ceramic beads embedded in a clear, 100% acrylic resin. It is the most visual of the Durex Architectural Coatings, creating a subtle yet multi-coloured finish resembling that of granite and marble.

Must be primed with DUREX BRUSHCOAT. Steel Trowel Applied.

Possible Uses

DUREX GRANITE is used as an effective long wearing protective coating over all types of solid substrates. DUREX GRANITE is mixed to match selected colours.

ITEM #	ITEM NAME	PACKAGING	UNITS/PALLET	COVERAGE
010143	DUREX Gemstone	18.9 L/pail	48 pails/pallet	120 ft ² /pail



Specialty Finishes - Coloured Quartz and Metallic Finishes

DUREX STONETEX

09 94 00

Multi-Coloured Aggregate Decorative Coating



DUREX STONETEX is a high build, multi-coloured, protective coating consisting of coloured natural stone chips embedded in a clear, 100% acrylic resin. It is the most visual of the Durex Architectural Coatings.

Possible Uses

DUREX STONETEX is used as an effective long wearing protective coating over all types of solid substrates. It is mixed to match selected colours.

Must be primed with DUREX BRUSHCOAT. Steel Trowel Applied.



ITEM #	ITEM NAME	PACKAGING	UNITS/PALLET	COVERAGE
010141	DUREX Stonetex	18.9L/pail	48 pails/pallet	75-90 ft ² /pail

DUREX CRYSTAL COAT

09 94 00

Coloured Aggregate Reflective Coating



DUREX CRYSTAL COAT is a high build, multicoloured, reflective coating. Formulated to create a rich, vibrant texture, it adds depth and complexity to any architectural surface. DUREX CRYSTAL COAT consists of aggregates and special reflective coloured minerals embedded in a clear 100% acrylic resin. Enhanced by halogen and natural light sources resulting in endless interior and exterior design possibilities, it is one of the most visual of the Durex Architectural Coatings.

Must be primed with DUREX BRUSHCOAT. Steel Trowel Applied.



ITEM #	ITEM NAME	PACKAGING	UNITS/PALLET	COVERAGE
010155	DUREX Crystal Coat	18.9 L/pail	48 pails/pallet	95 ft ² /pail

Specialty Finishes - Coloured Quartz and Metallic Finishes

DUREX CROMATEX

09 94 00

Exterior Grade Metallic Acrylic Paint



DUREX CROMATEX is a durable, high quality, acrylic base wall coating, which provides an elegant “metallic” alternative to traditional latex coatings. It is offered in nine (9) shimmering colours and is part of the family of Durex New Generation Textures.

Possible Uses

DUREX CROMATEX is used as an effective long wearing protective coating over all types of solid substrates. It is mixed to match selected colours. It can be applied as the final finish coating over all Durex EIF Systems or Durex Lite Coat and/or Durex Stucco LiteWall Systems.



ITEM #	ITEM NAME	PACKAGING	UNITS/PALLET
010150	DUREX Cromatex	18.9 L/pail	48 pails/pallet



Specialty Finishes - Rough & High Build Finishes

DUREX AGGREX

09 94 00

Acrylic High Build Multi-Coloured Decorative Coating

DUREX AGGREX is a high build, multi-coloured, finish consisting of coloured natural stone embedded in a coloured, polymer-modified cement base. The natural stone may either be crushed or rounded.

Possible Uses

DUREX AGGREX is used to match pre-cast concrete panels.

ITEM #	ITEM NAME	PACKAGING	UNITS/PALLET	COVERAGE
-	DUREX Aggrex	22.7 kg/bag	50 bags/pallet	180-300 ft ² /bag



DUREX ROUGH CAST

09 21 00

High Build, Heavy Textured Cement Based Finishing Plaster

DUREX ROUGH CAST is a polymer modified, White Portland Cement based, high-build and heavy textured finishing plaster. It creates a thick texture and is designed to replicate the heavy, old style plaster from the early 1900s. DUREX ROUGH CAST is designed for the skilled tradesmen to be applied using a variety of methods at the discretion of the applicator. It can be applied with a trowel, sponge, or even a heavy duty sprayer with the ability to be pulled and flattened by hand. Made for application on interior and exterior walls.

Possible Uses

DUREX ROUGH CAST can be used as a finish coat over Durex Stucco Wall Systems or over new or existing substrates such as masonry, concrete, concrete block, brick or other cementitious renderings.

ITEM #	ITEM NAME	PACKAGING
010373	DUREX Rough Cast Stucco Base	50 lb/bag
010374	DUREX Rough Cast Binder	18.9 L/pail
0120401	DUREX Rough Cast Aggregate 6 mm	100 lb/bag



Specialty Finishes - Rough & High Build Finishes

DUREX DECORATIVE STUCCO EXT

09 94 00

Cement-Based Vinyl Modified Stucco

DUREX DECORATIVE STUCCO EXT is a cement based vinyl modified stucco, formulated for application using a variety of texturing methods. Various attainable textures include flat, Spanish style, adobe, spray and other unique custom designed textures and patterns.

Possible Uses

It is an economical quality texturing product which can be used for both exterior and interior applications on walls and ceilings as a final texture finish. DUREX DECORATIVE STUCCO can also be used as a base coat to smooth out irregularities in substrates, such as misaligned concrete pours and poor joints in masonry construction.

ITEM #	ITEM NAME	PACKAGING	UNITS/PALLET	COVERAGE
010421	DUREX Decorative Stucco	20 kg/bag	50 bags/pallet	150 ft ² /bag



DUREX MONOCAPA

09 94 00

Polymer-Modified Cementitious Plaster

DUREX MONOCAPA is a polymer modified, Portland cement-based plaster, which has been formulated with numerous ideal features to provide a versatile, hard, strong, durable, fire and weather resistant surfacing material. DUREX MONOCAPA can be used in a variety of exterior/interior applications both on vertical or horizontal planes and in the hands of a skilled tradesman can be worked into patterns and textures on flat or curvilinear surfaces.

Possible Uses

DUREX MONOCAPA can be used as a base coat in the Durex Lite Coat and Durex Stucco Lite Systems, and over new or existing substrates such as masonry, concrete, concrete block, brick, or other cementitious renderings.

ITEM #	ITEM NAME	PACKAGING	UNITS/PALLET	COVERAGE
010372	DUREX Monocapa	22.7 kg/bag	63 bags/pallet	20-50 ft ² /bag



Specialty Finishes - Flat Steel Trowel Finishes

DUREX MONOFINO

09 21 00

Fiber Reinforced Cement Plaster Mix

DUREX MONOFINO is a glass fiber reinforced mixture of Portland cement and plaster, formulated with numerous ideal features to facilitate and simplify its application. This flexible cementitious coating is suitable for both interior and exterior surfaces.

Possible Uses

DUREX MONOFINO can be used as the topcoat to the DUREX MONOCAPA or as a base coat to the Durex Lite Coat System. Furthermore, this versatile wall coating system can be used as a finish coat, with or without pigmentation, to cover many interior or exterior surfaces such as gypsum, brick, concrete, cement board, fiber reinforced gypsum and many others. Durex Lite Coat and Durex Stucco Lite Systems.

ITEM #	ITEM NAME	PACKAGING	UNITS/PALLET	COVERAGE
010371	DUREX Monofino	22.7 kg/bag	50 bags/pallet	120-150 ft²/bag



DUREX DUR-A-BRICK

09 94 00

Brick Stencil Architectural Finish

Durex Dur-A-Brick Brick Texture Finishes are designed for use on both commercial and residential vertical wall applications. When used in combination with an EIFS or Stucco wall finish system creates a unique finish that simulates the look and feel of a masonry material while retaining all of the benefits and thermal properties of EIFS claddings. Installed using any type of Durex® Architectural Finish desired, creating endless design possibilities.

Please refer to the Durex® Dur-A-Brick Texture Finishes Technical Bulletin for more information and installation instructions.

ITEM #	ITEM NAME	PACKAGING	COVERAGE
460720	ADHESIVE STENCIL REGUAR FACE BRICK 2-1/4" x 7-3/4" (500SF)	ROLL	500 ft²/roll
460721	ADHESIVE MID-TOWN STUCCO 10-1/2" x 3" (500SF)	ROLL	500 ft²/roll

Many more sizes available. Please refer to Durex® Dur-A-Brick Texture Finishes Technical Bulletin for additional designs.



Dur-A-Brick Stencil



Dur-A-Brick Texture Finish

Roller Applied Coatings

DUREX BRUSH COAT

09 94 00

Acrylic High Build Protective and Decorative Coating



DUREX BRUSH COAT is one of the various exterior textures offered by Durabond Products Ltd., under the trade name of Durex Architectural Coatings. DUREX BRUSH COAT is a 100% acrylic based high build protective coating. It is the most versatile of the Durex Architectural Coatings. It is primarily roller applied, resulting in a light, uniform, sand textured finish. It can also be applied by brush.

Possible Uses

DUREX BRUSH COAT is an effective, long wearing protective coating for concrete and masonry, for new and existing structures when used in a two coat application. DUREX BRUSH COAT provides a uniform appearance in both colour and texture.



ITEM #	ITEM NAME	PACKAGING	UNITS/PALLET	COVERAGE
010101G	DUREX Brush Coat (Gallon)	4 L/pail	N/A	90–120 ft ² /pail
010101	DUREX Brush Coat (Pail)	25 kg/pail	48 pails/pallet	350–400 ft ² /pail

DUREX EMC

09 96 00

Acrylic Elastomeric High Build Protective and Decorative Coating



DUREX EMC is a 100% acrylic based elastomeric high build protective wall coating. Its unique formulation permits bridging of minor cracks which can normally appear in walls. A breathable coating, the DUREX EMC provides an effective weather shield for wall surfaces.

Possible Uses

DUREX EMC can be applied over almost any solid substrate, but not limited to the following:



ITEM #	ITEM NAME	PACKAGING	UNITS/PALLET	COVERAGE
010111	DUREX EMC	25 kg/pail	48 pails/pallet	450–500 ft ² /pail
010111KG	DUREX EMC Knife Grade	4 L/pail	N/A	90–120 ft ² /unit

Roller Applied Coatings

DUREX DUR-X-CEL 100

09 96 00

Exterior Grade Acrylic Latex Paint



DUR-X-CEL 100 is a 100% flat acrylic based exterior grade paint.

Possible Uses

DUR-X-CEL 100 is used as a premium quality paint for exterior masonry and concrete surfaces. It can be pigmented to match almost any colour.

Ideal for recoating existing stucco and EIFS surfaces.



ITEM #	ITEM NAME	PACKAGING	UNITS/PALLET	COVERAGE
010510-100	Dur-X-Cel 100	18.9 L/pail	48 pails/pallet	1200-1500 ft ² /pail / one coat

DUREX ROLTEX

09 96 00

Acrylic Thick Build Protective and Decorative Coating



DUREX ROLTEX is a 100% acrylic based high build protective coating. It is a component of Durex Architectural Wall Coatings.

Possible Uses

DUREX ROLTEX is an effective, long wearing protective coating for new and existing solid substrates when used in a two coat application. It provides a uniform appearance in both colour and texture.



ITEM #	ITEM NAME	PACKAGING	UNITS/PALLET	COVERAGE
010103	DUREX Roltex	25 kg/pail	48 pails/pallet	250-300 ft ² /pail / one coat

Fade Resistant Coatings

DUREX KOLOR GARD

09 96 00

Fade Resistant Coating Technology



Durex® Kolor Gard Architectural Coatings incorporate fade resistant pigmentation technology to enhance colour fastness properties (resistance to fading) of bright or deep mass tone Durex® Architectural Coatings. Durex® Kolor Gard Architectural Coatings integrate specially formulated waterborne resins with high performance ultraviolet resistant colourants to lock-in colour particles throughout the depth of coating. Along with colour retention this unique technology also enhances durability and crack resistance.

Possible Uses

Durex® Kolor Gard Architectural Coatings are highly recommended when bright mass tone colours such as red, orange, blue, green, black, yellow, purple and violet are incorporated into the colour design of exterior building finishes.

Durex® Kolor Gard Architectural Coatings are commonly applied over Durex® Quantum Select, Durex® Equalite or Durex® EW-17 Exterior Insulation Finish Systems. Durex Kolor Gard is available in a roller applied top coat which can be pigmented to all colours of our Durex Colour Selection Guide or to match almost any custom accent colour. Durex Kolor Gard Pigmentation Technology is also available as an integral component to our Durex Pebblefloat, Durex Marblecoat 1.0 and Marblecoat 1.5, Rasato, Rustico and Sandstone Architectural Finishes.



ITEM #	ITEM NAME	PACKAGING	UNITS/PALLET	COVERAGE
010160	KOLOR GARD – TOPCOAT	18.9L / pail	48 pails / pallet	1200 ft²/pail
010160G	KOLOR GARD – TOPCOAT (GAL)	3.78L / pail	-	240 ft²/gal
010161	KOLOR GARD – MARBLE COAT 1.0	18.9L / pail	48 pails / pallet	120 ft²/pail
010162	KOLOR GARD – MARBLE COAT 1.5	18.9L / pail	48 pails / pallet	100 ft²/pail
010162	KOLOR GARD – PREBBLE FLOAT	18.9L / pail	48 pails / pallet	100 ft²/pail
010165	KOLOR GARD – SANDEX	18.9L / pail	48 pails / pallet	140 ft²/pail
010166	KOLOR GARD – RASATO	18.9L / pail	48 pails / pallet	150 ft²/pail
010167	KOLOR GARD – RUSTICO	18.9L / pail	48 pails / pallet	140 ft²/pail
010168	KOLOR GARD – SANDSTONE	18.9L / pail	48 pails / pallet	180 ft²/pail
010168B	KOLOR GARD – SANDBASE	18.9L / pail	48 pails / pallet	150 ft²/pail
010169	KOLOR GARD – BRUSHCOAT	18.9L / pail	48 pails / pallet	400 ft²/pail

Fade Resistant Coatings



DUREX Elastomeric Architectural Series

DUREX Elastomeric Architectural Series is a line of high build, textured, multicoloured, protective coatings of specially blended quartz aggregates, embedded in a pigmented 100% elastomeric acrylic resin.

Possible Uses

DUREX ELASTOMERIC ARCHITECTURAL COATINGS are used as an effective long wearing protective coating over all DUREX EIFS as well as the primary coating over many solid substrates such as concrete, stucco, masonry and CMU.

Advantages

- Exceptional crack bridging capability
- Unsurpassed durability
- Excellent dirt pick up resistance
- Excellent adhesion to substrate
- Colour-fast; not affected by ultraviolet rays
- Excellent water repellency
- Breathable coating, allows water vapour, protects surfaces from moisture within the wall system to evaporate penetration



DUREX ELASTOMERIC BRUSH COAT

09 94 00

Acrylic High Build Protective and Decorative Coating

ITEM #	ITEM NAME	PACKAGING	UNITS/PALLET	COVERAGE
011201	DUREX Brush Coat (FX)	25 kg/pail	48 pails/pallet	400–450 ft ² /pail

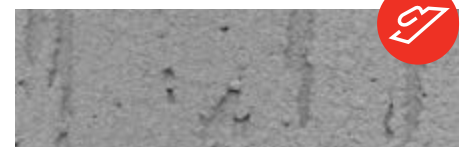


DUREX ELASTOMERIC GRAFFIATO

09 94 00

Acrylic High Build Protective and Decorative Coating

ITEM #	ITEM NAME	PACKAGING	UNITS/PALLET	COVERAGE
011202	DUREX Graffiato (FX)	30 kg/pail	48 pails/palle	t 95–110 ft ² /pail



DUREX Elastomeric Architectural Series

DUREX ELASTOMERIC MARBLE COAT 1.0

09 94 00

Acrylic High Build Multi-Coloured Elastomeric Decorative Coating

ITEM #	ITEM NAME	PACKAGING	UNITS/PALLET	COVERAGE
011203M	DUREX Marble Coat 1.0 (FX)	30 kg/pail	48 pails/pallet	110–120 ft ² /pail

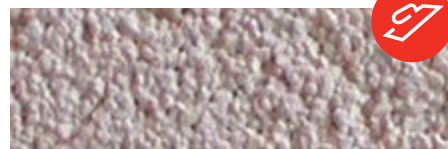


DUREX ELASTOMERIC MARBLE COAT 1.5

09 94 00

Acrylic High Build Multi-Coloured Elastomeric Decorative Coating

ITEM #	ITEM NAME	PACKAGING	UNITS/PALLET	COVERAGE
011203	DUREX Marble Coat 1.5 (FX)	30 kg/pail	48 pails/pallet	100–110 ft ² /pail



DUREX ELASTOMERIC SANDEX

09 94 00

Acrylic High Build Multi-Coloured Elastomeric Decorative Coating

ITEM #	ITEM NAME	PACKAGING	UNITS/PALLET	COVERAGE
011204	DUREX Sandex (FX)	30 kg/pail	48 pails/pallet	140–150 ft ² /pail



DUREX ELASTOMERIC VENECIAN

09 94 00

Acrylic High Build Multi-Coloured Elastomeric Decorative Coating

ITEM #	ITEM NAME	PACKAGING	UNITS/PALLET	COVERAGE
011205	DUREX Venician (FX)	30 kg/pail	48 pails/pallet	120–140 ft ² /pail



Decorative Plasters & Faux Finishes

ACROPLAST VENETIAN PLASTER

09 94 00

Decorative Venetian Plaster

ACROPLAST VENETIAN PLASTER is a single component exterior/interior flat, textured, high build Venetian Plaster with very low odour and VOC. ACROPLAST VENETIAN PLASTER has good workability properties, adheres to variety of substrates and can be easily tinted/blended with universal colours in any shakers/mixers.

Possible Uses

ACROPLAST VENETIAN PLASTER is used as interior/exterior wall coatings for masonry, concrete, plaster and drywall surfaces.

ACROPLAST REGULAR is a regular grade and has normal burnishing properties.

ACROPLAST LIME is a premium grade and has outstanding burnishing properties with a hard surface finish and a higher sheen level.



ITEM #	ITEM NAME	PACKAGING	COVERAGE
707201	ACROPLAST VENETIAN PLASTER - REGULAR	5 GAL	200 ft ² /gal
707201G	ACROPLAST VENETIAN PLASTER - REGULAR	1 GAL	40 ft ² /gal
707202	ACROPLAST VENETIAN PLASTER - LIME	5 GAL	200 ft ² /gal
707202G	ACROPLAST VENETIAN PLASTER - LIME	1 GAL	40 ft ² /gal

DUREX SUPER STIPPLE

09 94 00

Acrylic High Build Multi-Coloured Decorative Coating

DUREX SUPER STIPPLE is an acrylic water-based high build decorative coating, used to provide multiple effect finishes to a wall. It is available in white and accent bases.

Possible Uses

DUREX SUPER STIPPLE is used primarily for interior wall surfaces in residential, commercial or institutional construction.

Advantages

DUREX SUPER STIPPLE is ready to use and easy to apply. It can be tinted to an infinite range of colours where subtle colour variations can be created. It is water-based which makes it washable, non-combustible and allows its tools to be easily cleaned.



ITEM #	ITEM NAME	PACKAGING	UNITS/PALLET	COVERAGE
010122	DUREX Super Stipple	20 kg/pail	48 pails/pallet	150–200 ft ² /pail

Decorative Plasters & Faux Finishes

CRACKLE SIZE BASECOAT

09 94 00

Tacky Basecoat for CRACKLE ANTIQUE & STONE



CRACKLE SIZE is single component water based acrylic basecoat designed for two stage crackle applications: CRACKLE ANTIQUE & STONE. CRACKLE SIZE features include low odour and VOC, it adheres to a variety of substrates and is compatible with aqueous/universal pigment dispersions.

Possible Uses

CRACKLE SIZE has tackifying properties, which leaves a permanent tacky finish as a basecoat for CRACKLE ANTIQUE & STONE. Apply by roller/brush/spray.



ITEM #	ITEM NAME	PACKAGING	COVERAGE
707002	CRACKLE SIZE	5 GAL	800 ft ² /pail
707002G	CRACKLE SIZE	1 GAL	160 ft ² /gal

CRACKLE STONE & ANTIQUE TOPCOAT

09 94 00

Faux Finish Affect Decorative Coatings



CRACKLE STONE & CRACKLE ANTIQUE are single component water-based acrylic coatings, specially formulated to use as decorative Faux Finishing products. CRACKLE STONE & ANTIQUE are part of a two-product system that is applied over CRACKLE SIZE basecoat. They cure to a clear coating. Colour is not affected when pigmented.

CRACKLE STONE & ANTIQUE are supplied in two types:

CRACKLE ANTIQUE has low viscosity and yield smaller cracks.

CRACKLE STONE has high viscosity and exhibits more profound larger cracks.

Possible Uses

CRACKLE STONE & ANTIQUE can be used for both exterior/interior faux finish effect applications with superior hardness, bloc and adhesions resistance. They can be applied on variety of substrates such as metals, wood, concrete, stucco and plaster.



ITEM #	ITEM NAME	PACKAGING	COVERAGE
707001	CRACKLE STONE & ANTIQUE	5 GAL	800 ft ² /pail
707001G	CRACKLE STONE & ANTIQUE	1 GAL	160 ft ² /gal

Decorative Plasters & Faux Finishes

CRACKLE GLAZE

09 94 00

Clear Basecoat for Latex/Oil Based Paint Crackle Topcoat



CRACKLE GLAZE is a single component water and acrylic based flat transparent crackle glaze basecoat. When completely dried, a crackle effect will appear on any latex or oil-based paint applied over CRACKLE GLAZE

Properties Include

Low odour and VOC, adherence to a variety of substrates and compatibility with aqueous and universal colourants.

Possible Uses

CRACKLE GLAZE can be applied by brush, roller and sprayer on any wall or desired surfaces. Decorative artists can now achieve an old age crackle effect appearance by using CRACKLE GLAZE.



ITEM #	ITEM NAME	PACKAGING	COVERAGE
707002	CRACKLE SIZE	5 GAL	800 ft ² /pail
707002G	CRACKLE SIZE	1 GAL	160 ft ² /gal

CORALTEX METALLIC HAMMER TONE

09 94 00

Hammer Tone Metallic Decorative Finish



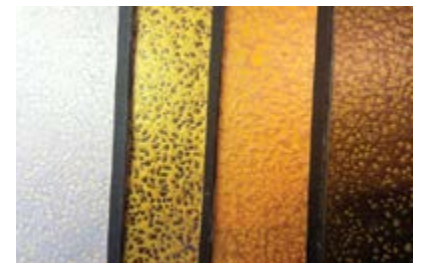
CORALTEX METALLIC HAMMER TONE is a single component, water-based acrylic Metallic Hammered finish paint. It is durable, water and chemical resistant, has low odour and low VOC.

Properties Include

Non-staining, good leveling, high brightness, good flow and microform free.

Possible Uses

CORALTEX METALLIC HAMMER TONE is an ideal paint for metal railings and other similar applications. It can be applied on a variety of substrates such as ceramic tiles, wood, concrete, stucco and plaster.



ITEM #	ITEM NAME	PACKAGING	COVERAGE
707004	CORALTEX METALLIC HAMMER TONE	5 GAL	1500 ft ² /pail
707004G	CORALTEX METALLIC HAMMER TONE	1 GAL	300 ft ² /gal

Decorative Plasters & Faux Finishes

SCUMBLE GLAZE

09 94 00

Tintable Transparent Glaze



SCUMBLE GLAZE is a tintable, single component water based acrylic high performance extended glaze with low odour and VOC. It is a versatile, premium glaze that will adhere to a variety nonresilient substrates while giving the applicator extended open time to achieve a desired faux finishing effect.

Properties Include

Universal tint retention, UV resistance, outstanding exterior durability and chalk resistance.

Possible Uses

SCUMBLE GLAZE is a tintable glaze used to achieve a pigmented, extended open time application for exterior/interior surfaces such as wood, glass, fiberglass, furniture, drywall and all masonry substrates.



ITEM #	ITEM NAME	PACKAGING	COVERAGE
707007	SCUMBLE GLAZE	5 GAL	800 ft ² /pail
707007G	SCUMBLE GLAZE	1 GAL	160 ft ² /gal

EXTENDER GLAZE

09 94 00

Open Time Retarder Glaze for Latex Paints



EXTENDER GLAZE is single component water based acrylic high performance Latex Retarder Glaze.

It increases open time for artists/decorative painters to create stunning methods. EXTENDER GLAZE does not change the chemical properties of latex based paint when mixed and fully cured. This product is suitable for both interior/exterior applications.

Possible Uses

EXTENDER GLAZE has excellent adhesion to a variety of substrates including drywall, concrete and stucco surfaces.



ITEM #	ITEM NAME	PACKAGING	COVERAGE
707008	EXTENDER GLAZE	5 GAL	800 ft ² /pail
707008G	EXTENDER GLAZE	1 GAL	160 ft ² /gal

Decorative Plasters & Faux Finishes

SUEDE LATEX

09 94 00

Suede Touch Decorative Paint



SUEDE LATEX is a single component, specially formulated, flat, smooth, light-build durable finish to be used on exterior/interior surfaces. It has burnishing properties, which leave a shiny finish when rubbed by a scraper.

This product is compatible with aqueous and universal colourants.

Possible Uses

SUEDE LATEX is formulated to be used as interior/exterior wall coating for wood, drywall and masonry surfaces.



ITEM #	ITEM NAME	PACKAGING	COVERAGE
707205	DEAD FLAT VARNISH	5 GAL	800 ft ² /pail
707205G	DEAD FLAT VARNISH	1 GAL	160 ft ² /gal

METALLIC PAINT

09 94 00

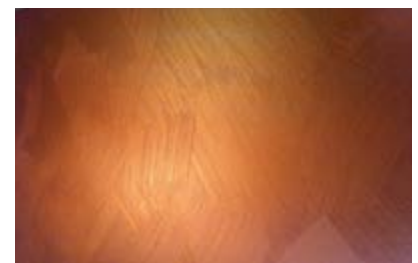
Decorative Metallic Paint



METALLIC PAINT is a single component waterborne all acrylic enamel paint. It is specially formulated for exterior/interior applications and can be applied by brushing, rolling or spraying. METALLIC PAINT is low odour and VOC compliant. It possesses very good leveling and brushmark free properties and is UV resistant (non-yellowing).

Possible Uses

METALLIC PAINT is ideal for exterior/interior wall coatings on masonry, dry wall, steel, metals, plastics and glass substrates. METALLIC PAINT can be used in hospitals, commercial, institutional, railing/window frames and directly to metal.



ITEM #	ITEM NAME	PACKAGING	COVERAGE
707301	METALLIC PAINT	5 GAL	800 ft ² /pail
707301G	METALLIC PAINT	1 GAL	160 ft ² /gal

Decorative Plasters & Faux Finishes

LUSTER PLASTER (OROSTONE)

09 94 00

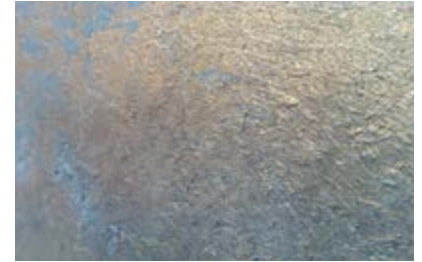
Textured Metallic Plaster



LUSTER PLASTER is a single component water based specialized metallic textured plaster. This durable product is compatible with aqueous and universal colours with very low odour and VOC. LUSTER PLASTER is buff-able and burnish-able.

Possible Uses

LUSTER PLASTER retains a patterned, reflective, metallic finish once applied over a properly prepared surface. This product is easily burnished, which leaves a shiny finish when rubbed by a scraper. Available in metallic colours: Gold and Pearl White.



ITEM #	ITEM NAME	PACKAGING	COVERAGE
707302	LUSTER PLASTER	5 GAL	200 ft ² /pail
707302G	SCUMBLE GLAZE	1 GAL	40 ft ² /gal

ACRONAMENT (GESSO)

09 94 00

Plaster for Embossed Icons/Ornaments



ACRONAMENT (GESSO) is a single component, water-based acrylic paste with very low odour and VOC.

ACRONAMENT is a durable, versatile creamy paste, which can hold its shape in dried finish, with negligible shrinkage. It is available in white and clear.

Possible Uses

ACRONAMENT (GESSO) is typically used for texture relief stencils for creating ornaments. It can also be used for special high-end textured finishes.



ITEM #	ITEM NAME	PACKAGING	COVERAGE
707702	ACRONAMENT (GESSO)	5 GAL	200 ft ² /pail
707702G	ACRONAMENT (GESSO)	1 GAL	40 ft ² /gal

Interior Ceiling Coatings

DUREX TEXTURE SPRAY

09 50 00

Lightweight Texture Ceiling Plaster Finish

DUREX TEXTURE SPRAY is a lightweight economical texturing plaster finish for ceilings.

Possible Uses

It is used to provide an aesthetically pleasing stipple finish over primed drywall and gypsum plaster ceilings and other primed substrates. Primarily intended for residential construction.

ITEM #	ITEM NAME	PACKAGING	UNITS/PALLET	COVERAGE
010432	DUREX Texture Spray	18.2 kg/bag	50 bags/pallet	180–300 ft ² /bag



DUREX CEILING COAT

09 50 00

Lightweight Ceiling Leveling Compound

DUREX CEILING COAT is a specially formulated lightweight leveling compound for use on concrete ceilings.

Possible Uses

DUREX CEILING COAT is used as a patching and/or leveling compound on concrete ceilings, where and if required, prior to the application of Durex Texture Spray. It can also be used as a final fine spray finish.

ITEM #	ITEM NAME	PACKAGING	UNITS/PALLET	COVERAGE
010411	DUREX Ceiling Coat	18.1 kg/bag	50 bags/pallet	200 ft ² /bag



Interior Ceiling Coatings

DUREX PLASTER BOND BLUE & WHITE

09 21 00

Water Based Bonder for Gypsum Plaster

DUREX PLASTER BOND is a water based primer for the bonding of gypsum plasters. Available in light blue or white colours.

Possible Uses

DUREX PLASTER BOND primer is used to establish the bond between new gypsum plaster and concrete, existing gypsum plaster, drywall and other solid substrates.

Mixing Procedure

Thoroughly stir DUREX PLASTER BOND in its own pail before each use. Discard all frozen materials, materials which have formed solid lumps at the bottom of the container and materials which do not appear to be of a homogeneous viscosity.



ITEM #	ITEM NAME	PACKAGING	UNITS/PALLET	COVERAGE
010242	DUREX Plaster Bond Blue	4L/pail	4 gal/box	250-500 ft ² /jug
010243	DUREX Plaster Bond Blue	18.9L/pail	48 pails/pallet	1000-2000 ft ² /pail
010252	DUREX Plaster Bond White	4L/pail	4 gal/box	250-500 ft ² /jug
010253	DUREX Plaster Bond White	18.9L/pail	48 pails/pallet	1000-2000 ft ² /jug

Concrete & Masonry Restoration

- Concrete Mix Design Charts
- Durex Dur-A-Patch
- Durex Dryplast
- Durex Dryplast Concentrate
- Durex Uniplast & Acrylic Resin Bond
- Durex Flexcrete
- Durex Ectoflex
- Durex Dur-A-Top 15 Self Leveling Cement
- Durex Sand Mix
- Portland Cement
- Tremco Dymonic 100
- Tremco Vulkem 45 SSL
- Durex EMC Knife Grade
- Durex Acrybond Concentrate
- Acrylic Resin Bond
- Dur-A-Patch Liquid Additive
- Durex Cement Bond
- Durex Acrybond 'S'
- Durex AR Grade 1" Grid Concrete Reinforcing Mesh
- Durex E-Grade 1½" Grid Concrete Reinforcing Mesh (AR Coated)
- Durex Fiberglass Reinforcing Mesh
- Concrete Restoration Guide
- Masonry Restoration Guide

Moisture Protection

- Durex Flexcrete
- Durex Blue Shield
- Durex Dur-A-Mastic 100
- Durex Green Guard Plus
- Durex Ectoflex
- Durex Barrier Seam Tape
- Durex Flex Seal
- Durex Flex Seal VP
- Durex Dur-O-Lastic
- Durex Ectoflex
- Super Stick Building Tape
- Durex Flex-Seal Wall Flashing Tape
- Durex Flex-Seal Red Primer
- Durex Durathane B500
- Durex Uraflex 360/375UV
- Durex Acrotel SB
- Durex Uraflex Traffic Bearing Waterproofing System
- Durex Mechanical Room Waterproofing System
- Durex Garbage Room Waterproofing System
- Durex Uraflex 360
- Durex Uraflex 361
- Durex Uraflex 375 UV

Protective Coatings & Sealers

- Durex Brush Coat
- Acrotel EC-A
- Durex Ecto-Sil 1000

- Durex EMC
- Durex EMC Knife Grade
- Durex Roltex
- Durex Dur-X-Cel 100
- Durex Dur-X-Cel Primer
- Durex Acrotel SB Non-Porous Primer
- Durex Durathane 90
- Durex Epotel Anti-Corrosion Metal Primer
- Durex Epotel WB DTM
- Durex TBC
- Durex Acrotel SB Metal Primer
- Durex Acrotel DTM
- Durex Acrotel SB Primer
- Durex Acrotel SB Metal
- Durex Wall Seal
- Durex Dur-A-Seal A28
- Durex Dur-A-Seal A.G.
- Durex Dur-A-Seal XL 250
- Durex Acrotel SB Floor Grade
- Durex Concrete Sealer WB 18/25
- Durex Epotel 80
- Durex Diamond LOK
- Durex Silane WRS 40/100

Floor Coatings

- Durex Epotel 100 GSC
- Durex Epotel 100 GSC Rapid Cure
- Durex Epotel 100 GSA
- Durex Uraflex 100
- Durex Uraflex 100 OP
- Durex Epoxy Guard Pro
- Durex Epotel 100 UR
- Durex Epotel 100 Novolac
- Durex Epotel 100 CR
- Durex Duracrete Broadcast
- Durex Duracrete Trowel
- Durex Epotel 100 TL
- Durex Duracrete Aggregate
- Durex Uracrete
- Durex Art-I-Stone
- Durex Dur-A-Flake
- Durex Dur-A-Quartz Broadcast
- Durex Dur-A-Quartz Trowel
- Durex Granitech
- Durex Acrutel 50
- Durex Aquathane
- Durex Durathane 90
- Durex Polyuretel
- Durex Epotel Multi-Prime
- Durex Moisture Block 100
- Durex Uraflex Primer
- Durex Uraflex Citrus Primer

- Durex Epotel 100 Crack Filler
- Durex Anti Slip Aggregates
- Durex Acrotel SB
- Durex TBC
- Durex Epoxy Guard
- Durex Epoxy Guard Pro

Exterior Wall Systems

- Durex Flexlite Select
- Durex Quantum Select
- Durex Quantum Select MF
- Durex Quantum 5.0
- Durex Quantum Select ICF
- Durex Equalite
- Durex Insulite EW-17
- Durex Flexlite ADH
- Durex Lite Coat
- Durex Stucco Lite
- Durex Stucco Wall
- Durex ICF Coating

Architectural Coatings & Decorative Finishes

- Durex Marble Coat 1.5
- Durex Marble Coat 1.0
- Durex Venecian
- Pebble Float
- Durex Sandex
- Durex Trim Spray
- Durex Stucco Spray
- Durex Graffiato
- Durex Sandstone
- Durex Rasato
- Durex Rustico
- Durex Antico Glaze
- Durex Trowel Grade Stucco
- Durex Gemstone
- Durex Granite
- Durex Stonetex
- Durex Crystal Coat
- Durex Cromatex
- Durex Aggex
- Durex Rough Cast
- Durex Decorative Stucco Ext
- Durex Monocapa
- Durex Monofino
- Durex Dur-A-Brick
- Durex Brush Coat
- Durex EMC
- Durex Dur-X-Cel 100
- Durex Roltex
- Durex Kolor Gard
- Durex Elastomeric Brush Coat
- Durex Elastomeric Graffiato
- Durex Elastomeric Marble Coat 1.0
- Durex Elastomeric Marble Coat 1.5
- Durex Elastomeric Sandex
- Durex Elastomeric Venecian

- Acroplast Venetian Plaster
- Durex Super Stipple
- Crackle Size Basecoat
- Crackle Stone & Antique Topcoat
- Crackle Glaze
- Coraltex Metallic Hammer Tone
- Scumble Glaze
- Extender Glaze
- Suede Latex
- Metallic Paint
- Luster Plaster (Orystone)
- Acronament (Gesso)
- Durex Texture Spray
- Durex Ceiling Coat
- Durex Plaster Bond Blue & White

EIFS Stucco & Components

- Durex Uniplast & Durex Acrybond 'S
- Durex Flexcrete'
- Durex Monobase
- Durex VCA 3.0 Insulation Adhesive
- Durex Monofino
- Durex Monocapa
- Durex Pool Marble Finish
- Durex Trim Coat
- Durex Fiberglass Reinforcing Mesh
- Durex Intermediate Mesh
- Durex High Impact Mesh
- Durex Detail Fiberglass Mesh
- Durex Trim Mesh
- Durex Barrier Seam Tape
- Durex Quantum Select
- Durex Quantum 5.0
- Durex Flexlite Select EPS
- Type 1 Eps
- Type 2 Eps
- Type 3 Eps
- Durex Equalite Mineral Fiber Insulation
- Durex Boundary Boards
- Durex Flexlite Select Vent Board
- Durex Quantum Select Vent Boards
- Durex Dur-A-Mastic 100
- Durex Blue Shield
- Durex Flexcrete
- Durex Green Guard Plus
- Durex Ectoflex
- Durex Barrier Seam Tape
- Durex Flex-Seal
- Flex-Seal VP
- Durex Primerless
- Durex Primerless EIFS Tape

- Durex EIFS Tape
- Durex Flex Seal Mastic
- Durex Flex Seal Wall Flashing Tape
- Durex Flex Seal Red Primer
- Durex Drainage Mat
- Durex Drainage Vent
- Durex Drainage Track
- Durex Uni-Flash Drainage Track
- Kick-Out Flashing
- Window Drips
- Starter Strip EIFS Drainage
- Durex Dryplast
- Durex Uniplast & Acrylic Resin Bond
- Durex Flexcrete
- Permabase Cement Board
- Durex Glass Gold
- Stucco & Stone Veneer Drainage Matt
- Mesh Lath / Rib Lath
- Metal Corner Bead
- Metal Expansion Joints
- Metal Plaster Stop / Casing Bead
- Plastic Corner Bead
- Plastic Plaster Stop
- X-66 Expansion Joint
- Soffit Vent
- Tremco Spectrum 3
- Tremco Spectrum 4-TS
- Backer Rod
- Durex Caulked Joint Weepers
- Caulk Guns

Tools & Accessories

- MJP Anchors
- Steel Fasteners
- Ucan Scru-It Masonry Anchor
- Pin Bolts
- U-Drive - Concrete Nails
- Cement Board Anchors
- Roof Grip Screws
- ULP Plates
- Wind-Devil WDP Plates
- Long-Lock Plates
- SDS Hammer Drill Bit
- Groove Tool Trowel
- Straight Groove Blade
- Portable Hot Groover
- Windlock 2-QC Blue Hot Knife
- Yellow Hot Knife Kits
- Hot Wire Machine Accessories
- V-Groove Sleds
- V-Groove Blades
- Square Groove Reveals
- Square Groove Blades
- Angled Groove Reveals
- Angled Groove Blades
- Beveled Groove Sleds

- Beveled Groove Blades
- Permashape Golden Stainless Steel "Broken In" Trowel
- Permashape High Carbon "Broken In" Trowel
- Permashape Golden Stainless Steel w/ Durasoft Trowel
- Golden Stainless Steel w/ Durasoft Xtralite Trowel
- Swimming Pool Trowel
- Finishing Float
- Inox Stainless Steel Venetian Trowels
- Corner Trowels
- Notched Trowel
- Tuck Trowel
- Margin Trowel
- Featheredges
- Hawks
- Ornament Tools
- Rub Bricks & Accessories
- Bucket Scoops
- Stainless Steel Putty Knives
- Putty Knives
- Knives
- Durarasp
- Tiger Claw Durarasp
- Marshalltown Rasp
- Duravac Heavy Duty Electric Rasp + Shop-Vac Back Pack
- Hopper & Texture Guns
- Spray Foam, Guns & Cleaner
- Mixing Paddles
- Mixing Drills
- Chalk Line
- Staple Guns/Tackers
- Staples
- Measuring Tape/Levels
- Top Quality Brushes
- Medium Quality Brushes
- Roller Cage & Refills
- Fiberglass Pole Extensions
- Paint Trays & Accessories
- Wash Brushes
- Masking & Joint Tape
- Stucco Tape & Specialty Masking Tapes
- Tarp/Polyethylene/Masking
- Window Film Protection Tape
- Kraft Paper
- Squeegees
- Spike Shoes
- Spike Roller
- Flooring Trowels
- Cam Guage Rakes

Durex®

CIRCA 1990



DURabond 

Durabond Products Limited

www.durabond.com

Head Office - Toronto

55 Underwriters Road
Scarborough, ON M1R 3B4
(416) 759 4474

Mississauga Office

6178 Netherhart Road
Mississauga, ON L5T 1B7
1 (905) 565 9283

Western Canada Office

14345 120th Avenue
Edmonton, Alberta T5L 2R8
1 (780) 451 6364

info@durabond.com

1 (877) 387 2266