

Durex®



DURabond **50**
YEARS
1967-2017

Contractor's Guide

Building Products & Solutions

CONCRETE & MASONRY RESTORATION

Pushing the Envelope for Excellence

You have one thing on your mind when it comes to choosing building products & solutions – they have to do more than perform today; they have to outperform for the long term. That’s why for over 50 years, Durabond has been the choice for those who expect more.

We are a leading manufacturer and developer of Exterior Insulated Cladding Systems, Specialized Architectural Coatings, Concrete Restoration Products, Protective Coatings, and a wide range of other related construction products. Whether a high-rise building or a single-family dwelling, a new construction or a restoration project, we understand the critical importance of getting it right the first time.

Our innovative, highly-engineered and tested systems are a creative solution for architects and designers. We are a tried, true and trusted choice for builders, engineers and homeowners who demand durability, superior flexibility, and aesthetic beauty.



Application Method Legend

Use of Product



Recommended



Not Recommended



Safety Hazard

Application Methods



Trowel



Roller



Spray



Sponge



Concrete & Masonry Restoration

The Durex® Line of Concrete & Masonry Restoration products are top quality concrete repair mixes, compounds, additives and plasters to help restore and rejuvenate old, deteriorated concrete. They are designed specifically to help return your structure back to its original form.

- Concrete Repair Mortars
- Admixtures
- Reinforcing
- Non-Shrink Repair Mortars
- Fiber Reinforced Plaster Mixes
- Structural Repair Compounds
- Cementitious Waterproofing
- Self Levelers & Floor Underlayments

8 Concrete Mix Design Charts

12 Repair Mortars & Plasters

Durex Dur-A-Patch
Durex Dryplast
Durex Dryplast Concentrate
Durex Uniplast & Acrylic Resin Bond
Durex Flexcrete
Durex Ectoflex

16 Self Leveling Cements & Floor Topping

Durex Dur-A-Top 15 Self Leveling Cement
Durex Sand Mix
Portland Cement

17 Crack & Joint Treatment

Tremco Dymonic 100
Tremco Vulkem 45 SSL
Durex EMC Knife Grade

19 Concrete Admixtures & Additives

Durex Acrybond Concentrate
Acrylic Resin Bond
Dur-A-Patch Liquid Additive
Durex Cement Bond
Durex Acrybond 'S'

22 Concrete Reinforcement

Durex AR Grade 1" Grid Concrete Reinforcing Mesh
Durex E-Grade 1½" Grid Concrete Reinforcing Mesh (AR Coated)
Durex Fiberglass Reinforcing Mesh

24 Restoration & Repair Guides

Concrete Restoration Guide
Masonry Restoration Guide



Mix Design

Possible Uses

PROPORTIONS

RATING

RECOMMENDED USE

INTERIOR

Foundation Coatings

DAMPROOFING PARGE COATS

4 bags Durex Uniplast Grey Med.
20 ltrs. Durex Acrylic Resin Bond

Best

Below grade Damproofing Parge Coat for concrete and masonry foundation walls. Also over insulation.



WATERPROOFING COATINGS

1 bag Ecto Flex
10L Ecto Flex

Excellent

Above or below grade cementitious waterproofing for concrete or masonry surfaces.



1 bag Durex Uniplast Fine
2-1/4 gals. Durex Acrylic Resin Bond

Best

Cement Underlayments

UP TO 3/8" THICK

1 bag Portland Cement
150 lbs. Silica Sand
1-1/2 gal. Durex Acrybond Concentrate
1-1/2 gal. water
*N.B. Bond coat beneficial but not required

Best

Floor underlayments and topping and flash patching 0" to 3/8" thick maximum.



1 bag Portland Cement
150 lbs. Silica Sand
1 gal. Cement Bond
2 gals. water
Primer: 1 gal Durabond Cement Bond
1 gal water

Very Good

Flash patching of concrete and masonry and toppings up to 3/8" thick.



Self Leveling Topping
1 bag Durex Self Leveling Cement
5 ltrs. water
Primer: 1 gal Durex Acrybond Concentrate
1 gal water

Best

Topping for all cement type horizontal floors & surfaces. Excellent for underlayment for tiles, carpet, parquet flooring, etc.



3/8" TO 1-1/2" THICK

1 bag Portland Cement
300 lbs. Concrete Sand
1 gal. Durex Acrybond Concentrate
1-1/2 gal. +/- water (as required)
Bond Coat: 1 gal Durex Acrybond Concentrate
1 gal water
20 lbs. Portland Cement
Apply immediately prior to placement of topping

Best

Excellent for multi-level parking garage, floor restoration, high traffic areas, industrial floors, etc.



Application

EXTERIOR	COVERAGE	CURING TIME	METHOD	NOTES
	100 ft ² @ 1/4" thick.	Initial - 24 hours Full - 7 days		Most effective coating for foundation walls - unaffected by moisture. Low absorption rate. Excellent adhesion. Crack resistance.
	150-200 ft ² per coat depending on porosity of surface	Initial - 8 hours Full - 3 days		Excellent adhesion. Will not impede recoating with any finish coating (unlike bituminous coatings). Easy to apply. Excellent resistance to moisture.
	130 ft ² @ 1/4" thick.	Initial - 1 day Full - 7 days		Best adhesion properties. Excellent for high moisture areas. Develops maximum strength without the need of wet curing. Excellent bond without the need of four (4) primer bon coat.
	130 ft ² @ 1/4" thick.	Initial - 1 day Full - 7 days		Excellent trowelability. Economical. Not recommended for high moisture areas or exterior use.
	28 ft ² @ 1/4" thick. Primer: 150 ft ² /gal.	Initial - 4 hours Foot Traffic - 8 hours Full - 7 days	Squeegee Screed	Fast setting. Easy to install. Excellent leveling action. High quality topping. High compressive strength.
	30 ft ² @ 1" thick. Bond Coat: 100 ft ² per coat	Initial - 2 days Full - 28 days		Excellent bond. Bond Coat may be eliminated, however best results are achieved when used. Excellent chloride ion penetration resistance. *Durabond Acrybond Concentrate can be substituted with Durabond Cement Bond for interior applications only.

Mix Design**Possible Uses****PROPORTIONS****RATING****RECOMMENDED USE****INTERIOR****Cement Underlayments****LIGHT WEIGHT TOPPING**

1 bag Portland Cement
 3 cf. Stabilized vermiculite
 2 gals. Durex Acrybond Concentrate
 2 gals +/- water (as required)
 Primer: gal Durex Acrybond Concentrate
 1 gal water
 20 lbs. Portland Cement

Excellent

For light weight toppings where additional weight to the structure is critical.
 *Must be used with reinforcing mesh

**General Concrete Repairs****THIN SECTION**

1 bag Durex Uniplast Med.
 1-1/4 gals. Durex Acrylic Resin Bond

Best

For general repairing of honey combing in concrete light surface imperfections and waviness prior to further coatings.

**THICK SECTION**

1 bag Durex Uniplast Coarse
 1-1/4 gal Durex Acrybond 'S'

Best

For thicker section repairing of concrete, masonry surfaces, or old stucco surfaces.

**POOL MARBELIZING**

1 bag Durex Uniplast White Course
 1-1/4 gals. Durex Acrylic Resin Bond

Best

For obtaining marble white finish in swimming pools - domestic or commercial - or to finishes of submerged areas.



1 bag White Portland Cement
 100 lbs. Marble Dust Mix
 1-1/4 gals. Durex Acrybond Concentrate
 1-1/2 gals +/- water (as required)

Excellent

**Special Applications****SQUASH COURTS**

4 bags Durex Uniplast White Med.
 20 ltrs. Durex Acrybond 'S'
 For base coat refer to Durex Wall Systems Base Coat.

Best

Squash Court finish over concrete or masonry.

**THICK SECTION**

4 bags Durex Uniplast White Course
 20 ltrs. Durex Acrybond 'S'
 Pigmented to selected colour for final texture.

Best

Best mix for exposed aggregate finishes.



Application

EXTERIOR	COVERAGE	CURING TIME	METHOD	NOTES
	50 ft ² @ 1" thick. Primer: 100 ft ² per coat.	Initial - 2 days Full - 7 days		Substantially reduced weight. Compressive strength at 28 days 1800 psi. Strength can be increased by changing mix proportions - contact Durabond Products Ltd for assistance.
	70 - 100 ft ² per mix based on light patching.	Initial - 8 hours Full - 4 days		Versatile mix for general repair. Excellent adhesion. Simple to use - mix as required. Quality consistency with every batch. Excellent strengths without the need of wet cure.
	25 ft ² @ 1/4" thick.	Initial - 1 day Full - 7 days		General mix for repair of any concrete area. Simple to use - mix as required. Maximum strengths every time. Excellent resistance to chloride ion penetration.
	25 ft ² @ 1/4" thick.	Initial - 1 day Full - 7 days		Simple to use. Guaranteed consistent quality. Minimum ingredients for maximum mix control.
	100 ft ² @ 1/4" thick.			Economical mix.
	200 ft ² @ 1/8" thick.	Initial - 1 day Full - 28 days		Top quality impact resistant finish for squash courts. Maximum adhesion to substrate. Full compatibility with all common final coatings. Easy to use - minimum components for maximum quality consistency.
	75 ft ² @ 3/8" thick. *Coverage will vary according to size of aggregate used.	Initial - 1 day Full - 7 days		Best mix for embedment of exposed aggregate finishes. Can be pigmented for achieving coloured base matrix for more ideal colour matching with the selected aggregates.

Repair Mortars & Plasters

DUREX DUR-A-PATCH

03 01 00

Structural Non-Shrink Repair Mortar

DUR-A-PATCH is used for the repair of all types of concrete work. In addition to repairs to concrete floors, DUR-A-PATCH can also be used for vertical and overhead repair work.

Available in the Following Grades

- Dur-A-Patch 100 (Fine)
- Dur-A-Patch 200 (Medium)
- Dur-A-Patch 300 (Coarse)
- Overhead
- Vertical
- Horizontal

Advantages

- Ease of application and excellent workability
- Excellent quality control
- High compressive strength yet low shrinkage
- High abrasion resistance
- Superior bonding strength
- High flexural strength
- Resistance to chloride penetration
- Low moisture absorption

DUR-A-PATCH is a two-component polymer modified non-shrink structural repair mortar, mixed with Durex DUR-A-PATCH LIQUID ADDITIVE.

Mixing Procedure

1 bag DUR-A-PATCH, 4–5 litres DUR-A-PATCH LIQUID ADDITIVE

ITEM #	ITEM NAME	PACKAGING	UNITS/PALLET	COVERAGE
010801A	DUREX Dur-A-Patch Fine	22.7 kg/bag	63 bags/pallet	50ft ² /bag @ 1/8"
010801	DUREX Dur-A-Patch Medium	22.7 kg/bag	63 bags/pallet	50ft ² /bag @ 1/8"
010801B	DUREX Dur-A-Patch Coarse	30 kg/bag 10 mm aggregate	63 bags/pallet	25–30ft ² bag @ 1/4"
010802	DUREX Dur-A-Patch Liquid Additive (Gallon)	gallon	4 bags/box	
010803	DUREX Dur-A-Patch Liquid Additive (Pail)	18.9L/pail	48 pails/pallet	



Repair Mortars & Plasters

DUREX DRYPLAST

09 24 00

Fiber Reinforced Cement Plaster Mix

DUREX DRYPLAST is a single component glass fiber reinforced mixture of Portland cement and plaster, formulated with a variety of ideal features to facilitate and simplify its application. It is easy to use single component product that is mixed with water.

Possible Uses

DUREX DRYPLAST can be used as the scratch and base coats for Durex Lite Coat and Durex Stucco Lite Systems. It is also an excellent parging and plastering material for vertical concrete applications and repairs.



ITEM #	ITEM NAME	PACKAGING	UNITS/PALLET	COVERAGE
010341	DUREX Dryplast Coarse	22.7 kg/bag	63 bags/pallet	25 ft²/bag
010343	DUREX Dryplast Medium	22.7 kg/bag	63 bags/pallet	50 ft²/bag
010344	DUREX Dryplast Fine	22.7 kg/bag	63 bags/pallet	100 ft²/bag
010344W	DUREX Dryplast White Fine	22.7 kg/bag	63 bags/pallet	100 ft²/bag

DUREX DRYPLAST CONCENTRATE

09 24 00

Concentrated Fiber Reinforced Cement Plaster Mix

DUREX DRYPLAST is a glass fiber reinforced mixture of Portland cement and plaster, formulated with a variety of ideal features to facilitate and simplify its application. It is available in both medium and coarse grades.

Possible Uses

DUREX DRYPLAST CONCENTRATE is designed to save shipping costs where local Portland Cement and Plaster Sand mix supply is acceptable by the applicator.



ITEM #	ITEM NAME	PACKAGING	UNITS/PALLET	COVERAGE
010342	DUREX Dryplast Concentrate	50 lb/bag	63 bags/pallet	100 ft² @ 1/4"

Repair Mortars & Plasters

DUREX UNIPLAST & ACRYLIC RESIN BOND

09 24 00 / 03 05 00

Cement Based Plaster Mix

DUREX UNIPLAST is a cement based plaster mix available in fine, medium and coarse grades. It incorporates a well-balanced blend of selected aggregates and fillers perfectly formulated to provide ideal physical properties and excellent workability features. It is a versatile product which can be used in several of the Durex Wall Systems as both scratch and base coats. It can also be used for concrete wall repair work and as a quality parging coat over masonry and concrete.



DUREX ACRYLIC RESIN BOND

100% Acrylic Polymer Cement Modifier

DUREX ACRYLIC RESIN BOND is a water based, 100% acrylic polymer cement additive. DUREX ACRYLIC RESIN BOND has been specially formulated to provide maximum adhesion and ideal application properties when used as a versatile general purpose latex additive to Portland cement-based plasters and repair mortars.

Possible Uses

DUREX ACRYLIC RESIN BOND when mixed with DUREX UNIPLAST is used for concrete wall and floor patching for shallow and deep repairs, in maximum lifts of 6.4 mm (1/4") DUREX ACRYLIC RESIN BOND can be used as a general purpose latex additive in providing a latex/cement slurry bonding mix, a sand/Portland cement repair mortar, and a parging mix.



ITEM #	ITEM NAME	PACKAGING	UNITS/PALLET	COVERAGE
010301	DUREX Uniplast Grey Fine	22.7 kg/bag	63 bags/pallet	75-100 ft ² /bag
010302	DUREX Uniplast Grey Medium	22.7 kg/bag	63 bags/pallet	50 ft ² /bag
010303	DUREX Uniplast Grey Coarse	22.7 kg/bag	63 bags/pallet	40 ft ² /bag
010321	DUREX Uniplast White* Fine	22.7 kg/bag	63 bags/pallet	65-75 ft ² /bag
010322	DUREX Uniplast White* Medium	22.7 kg/bag	63 bags/pallet	50 ft ² /bag
010323	DUREX Uniplast White* Coarse	22.7 kg/bag	63 bags/pallet	25 ft ² /bag

*Please use discretion when using Uniplast White. Contact Durabond with any inquiries.

Mixed with:

ITEM #	ITEM NAME	PACKAGING	UNITS/PALLET	COVERAGE
010206	Acrylic Resin Bond (Gallon)	4 L/jug	4 gal/box	Refer to dry mix
010207	Acrylic Resin Bond (Pail)	20 L/pail	4 pails/pallet	Refer to dry mix

Repair Mortars & Plasters

DUREX FLEXCRETE

07 25 00

Flexible Polymer-based Cementitious Mortar

DUREX FLEXCRETE is a two component polymer based mortar consisting of a water based acrylic liquid component Flexcrete, mixed with the dry component Flexcrete "B." DUREX FLEXCRETE mix has been developed to utilize advanced polymer technology to combine the strength and toughness of polymer modified cement with the flexibility of synthetics.

Possible Uses

Durex Flexcrete is used as the base coat for Durex® Insulated and Non-Insulated Wall Systems. Durex® Flexcrete is also used as an insulation adhesive for all Durex® Insulated Wall Systems. It is a Class 3 Air Barrier when applied at a minimum thickness of 1.5mm (1/16") Also; it is the best available cementitious joint treatment and base coat for cement board substrates.

ITEM #	ITEM NAME	PACKAGING	UNITS/PALLET	COVERAGE
010300	DUREX Flexcrete (Pail)	30 kg/bag	48 bags/pallet	100-120 ft²/pail
010300B	DUREX Flexcrete B (Bag)	22.7 kg/bag	63 bags/pallet	-



DUREX ECTOFLEX

07 16 00

Flexible Polymer Based Cementitious Waterproofing Plaster

DUREX ECTOFLEX is a two component, flexible, polymer-based cementitious coating designed to prevent moisture ingress, under hydrostatic pressure as well as air leakage and vapour diffusion. It is light grey in colour when fully cured.

Possible Uses

It is used as a waterproofing membrane designed to provide moisture protection in a variety of both vertical and horizontal applications, including foundation walls, tunnels and other earth sheltered structures, plaza decks, mud slabs and other spilt slab construction, wet rooms and balconies.

ITEM #	ITEM NAME	PACKAGING	UNITS/PALLET	COVERAGE
180411A	EctoFLEX (PART A LIQUID)	10 L/pail	-	75-100 ft²
180411B	EctoFLEX (PART B DRY)	22.7 kg/bag	63 bags/pallet	75-100 ft²



Self Leveling Cements & Floor Topping

DUREX DUR-A-TOP 15 SELF LEVELING CEMENT

03 54 16

Polymer Modified Self Leveling Underlayment

DUREX SELF LEVELING TOPPING is a cementitious, well balanced blend of selected aggregates and various types of cements that produce a pourable or pumpable cement compound which will self level after screening to the desired level of coverage. It is used in conjunction with DUREX ACRYBOND CONCENTRATE.

Possible Uses

DUREX SELF LEVELING TOPPING is used as a fast-settling high strength underlayment over rough concrete floors to fill cracks, repair damaged floor areas due to poor finishing, frost damage, etc. It can also be used for general leveling of new and existing floor surfaces prior to installation of finish flooring material. For toppings up to 9.6 mm (3/8") thick use medium grade. For toppings from 10 mm (3/8") up to 12.7 mm (1/2") thick use coarse grade.



ITEM #	ITEM NAME	PACKAGING	UNITS/PALLET	COVERAGE
010331	DUREX Self Leveling Cement	22.7 kg/bag	63 bags/pallet	25 ft ² /bag (1/4" thick)

DUREX SAND MIX

Cement Based Flooring Mix

DUREX SAND MIX is a basic mixture of Portland cement and plaster formulated for the underlayment of Concrete Floors. It is to be mixed with DUREX CEMENT BOND for interior applications or DUREX ACRYBOND CONCENTRATE for exterior applications.



ITEM #	ITEM NAME	PACKAGING	UNITS/PALLET
600411	DUREX Sand Mix	50 lb/bag	63 bags/pallet

PORTLAND CEMENT

General Use (Type 10) Portland Cement

PORTLAND CEMENT is the binding ingredient used in concrete mixes with or without other binders. Portland Cement is a finely ground powder which is mixed with sand, stone and water to produce concrete.

ITEM #	ITEM NAME	PACKAGING	UNITS/PALLET
020100	Portland Cement 20kg	-	81 bags/skid
020101	Portland Cement 40kg	-	40 bags/skid



Crack & Joint Treatment

TREMCO DYMONIC 100

07 92 13

Non-Sag Polyurethane Sealant

DYMONIC® 100 is a high-performance, high-movement, single-component, medium-modulus, low-VOC, UV-stable, non-sag polyurethane sealant.

Possible Uses

Dymonic 100 is a durable, flexible sealant that offers excellent performance in moving joints and exhibits tenacious adhesion once fully cured. Typical applications for Dymonic 100 include expansion and control joints, precast concrete panel joints, perimeter caulking (windows, doors, and panels), aluminum, masonry and vinyl siding. Dymonic 100 is also an excellent choice as a fluid applied flashing material in rough opening perimeters for fenestration/window, door and curtain wall applications.



ITEM #	ITEM NAME	PACKAGING
180842	Tremco Dymonic 100 - Sausage	600ML Sausage

TREMCO VULKEM 45 SSL

07 92 13

Moisture-Curing Polyurethane Sealant

VULKEM® 45 SSL is a semi-self-leveling, single-component, moisture-curing, low-modulus, polyurethane sealant.

Possible Uses

VULKEM 45 SSL is formulated for use in expansion joints in sidewalks, swimming pool decks, plazas, floors, balconies and any other horizontal surfaces with slopes up to 6% (e.g. 1' rise for every 16' run).



ITEM #	ITEM NAME	PACKAGING
180843	VULKEM 45 SSL - Pail	7.6L PAIL
180844	VULKEM 45 SSL - Cartridge	890ML CARTRIDGE

Crack & Joint Treatment

DUREX EMC KNIFE GRADE

Acrylic Elastometric Crack Filler

DUREX EMC-KNIFE GRADE is a single component water based, elastomeric, acrylic crack filler and repair product. It is used primarily to fill cracks in concrete or other masonry type surfaces prior to coating them with any one of our Durex Architectural Coatings. DUREX EMC-KNIFE GRADE can be used to fill cracks up to 6mm (1/4") width by 6mm (1/4") depth, in numerous substrates.

It is a highly filled paste that dries with minimal shrinkage. It is an internally plasticized, nonsag, thixotropic formulation which eliminates unsightly "telegraphing through" spots which commonly occur when externally plasticized crack fillers are used. Its unique formulation results in a weather-proof coating with excellent adhesion to numerous substrates, especially concrete and/or masonry, and minimal shrinkage which allow it to remain flexible through many thermal cycles.



ITEM #	ITEM NAME	PACKAGING	UNITS/PALLET
010111K	EMC Knife Grade	18.9 L/pail	48 pails/pallet
010111KG	EMC Knife Grade (gal)	3.78 L/gal	-

Concrete Admixtures & Additives

Concrete Bonding Agents are acrylic cement polymer emulsion modifiers that can be used as a primer for binding over various substrates such as concrete, stucco, brick and stone. These bonding agents may also be used as direct additives in a mix of water and Portland cement/sand mixes to control hydration and to prevent moisture loss.

DUREX ACRYBOND CONCENTRATE

03 05 00

Concentrated 100% Acrylic Polymer Cement Modifier

DUREX ACRYBOND CONCENTRATE is a water based 100% acrylic polymer cement additive. It is a highly concentrated versatile additive for cement mixes, specially formulated to optimize physical properties of Portland cement based mixes in a wide variety of applications.

Possible Uses

When properly mixed with cement DUREX ACRYBOND CONCENTRATE can be used for the following applications:

- Conventional site applied plaster base
- Concrete topping
- Repairs of honeycombed concrete
- Flash patching
- Parging coat for concrete block
- Versatile general bonding additive



ITEM #	ITEM NAME	PACKAGING	UNITS/PALLET	COVERAGE
010202	DUREX Acrybond Concentrate	4 L/jug	4 gal/box	50-75 ft ² /4 L
010203	DUREX Acrybond Concentrate	20 L/pail	48 pails /pallet	200-300 ft ² /20 L

Concrete Admixtures & Additives

DUREX ACRYLIC RESIN BOND

03 05 00

100% Acrylic Polymer Cement Modifier

DUREX ACRYLIC RESIN BOND is a water based, 100% acrylic polymer cement additive. DUREX ACRYLIC RESIN BOND has been specially formulated to provide maximum adhesion and ideal application properties when used as a versatile general purpose latex additive to Portland cement-based plasters and repair mortars.

Possible Uses

DUREX ACRYLIC RESIN BOND when mixed with DUREX UNIPLAST is used as concrete wall and floor patching for shallow and deep repairs, in maximum lifts of 6.4 mm (1/4") DUREX ACRYLIC RESIN BOND can be used as a general purpose latex additive in providing a latex/ cement slurry bonding mix, a sand/Portland cement repair mortar, and a parging mix.

ITEM #	ITEM NAME	PACKAGING	UNITS/PALLET
010206	Acrylic Resin Bond (Gallon)	4 L/jug	4 gal/box
010207	Acrylic Resin Bond (Pail)	20 L/pail	48 pails/pallet

**DUREX DUR-A-PATCH LIQUID ADDITIVE**

03 05 00

Structural Non-Shrink Mortar Additive

DUR-A-PATCH is a two-component polymer modified non-shrink structural repair mortar, mixed with DUREX DUR-A-PATCH LIQUID ADDITIVE.

Mixing Procedure

DUR-A-PATCH 1 bag, DUR-A-PATCH LIQUID ADDITIVE 4-5 litres.

Refer to page 12 for more product information.

ITEM #	ITEM NAME	PACKAGE
010802	DUREX Dur-A-Patch Liquid Additive (Gallon)	4 L/jug
010803	DUREX Dur-A-Patch Liquid Additive (Pail)	20 kg/pail



Concrete Admixtures & Additives

DUREX CEMENT BOND

03 05 00

Latex Emulsion Interior Use Cement Bonding Agent

DUREX CEMENT BOND is a latex emulsion for use both as a bonding agent and as an additive.

Advantages

- Permanent concrete repairs
- Elimination of costly chipping or roughening of surface required
- Excellent bonding strength to cleaned old surface
- The application of concrete topping from 0 to OVER 25mm (1") thick
- Improved tensile, flexible and compressive strength of the mixture
- Complete compatibility with high alkaline Portion cement mortars

Possible Uses

DUREX CEMENT BOND is used as both a general additive to cement based mixes and as a slurry primer to improve bonding between old concrete and new concrete toppings.



ITEM #	ITEM NAME	PACKAGING	UNITS/PALLET	COVERAGE
010232	DUREX Cement Bond	4 L/jug	4 gal/box	250-500 ft ² / jug
010233	DUREX Cement Bond	18.9 L/pail	48 pails /pallet	1000-2000 ft ² / pail

DUREX ACRYBOND 'S'

03 05 00

100% Acrylic EIFS Base Coat Polymer Modifier

DUREX ACRYBOND 'S' is a water based 100% acrylic polymer cement additive. DUREX ACRYBOND 'S' has been specially formulated to provide maximum adhesion and other ideal application properties when used as a catalyst in the mix with DUREX UNIPLAST. It is the typical mix for the Durex family of exterior insulation and finish systems (EIFS).

Possible Uses

DUREX ACRYBOND 'S' is used as an insulation adhesive and as scratch and base coats when mixed with DUREX UNIPLAST.



ITEM #	ITEM NAME	PACKAGING	UNITS/PALLET
010212	DUREX Acrybond 'S'	4 L/jug	4 gal/box
010213	DUREX Acrybond 'S'	18.9 L/pail	48 pails/pallet
010214	DUREX Acrybond 'S'	190 L/drum	4 drums/tote

Concrete Reinforcement

DUREX AR GRADE 1" GRID CONCRETE REINFORCING MESH

03 21 21

38" X 160' – 7.00Z

Durex® AR Grade Concrete Reinforcing Meshes are comprised of Alkali Resistant Fiberglass strands for ultimate performance, longevity and resistance against alkali attack.

Concrete Reinforcing fiberglass meshes are used to improve mechanical resistance of concrete compounds and repair materials. The raw mesh is soft and adapts well to all surfaces. The wide open fibers improve the absorption of the compounds. The mesh shall be laid over the first layer of fresh material and then covered with a second layer. In both cases mesh shall overlap at least 10 cm to ensure homogeneous reinforcement.

- Weight: 240 g/m² ±5%
- Mesh grid width: 25 x 25 mm
- Longitudinal strength: 2100 N/5 cm
- Transversal strength: 2300 N/5 cm



ITEM #	PACKAGING	COVERAGE
170711	38" x 160'/roll	475 ft ²

Concrete Reinforcement

DUREX E-GRADE 1½” GRID CONCRETE REINFORCING MESH

03 21 21

(AR COATED) – 39” X 160’ – 5OZ

Durex® E-Grade Concrete Reinforcing Meshes are comprised of standard E-Grade Fiberglass strands coated with an advanced Alkali Resistant Coating strands for resistance against alkali attack.

The extra wide open fibers improve the absorption of the compounds and allows for coverage in large areas. The mesh shall be laid over the first layer of fresh material and then covered with a second layer. In both cases mesh shall overlap at least 10 cm to ensure homogeneous reinforcement.

- Weight: 170 g/m² ±5%
- Mesh grid width: 38 x 38 mm
- Longitudinal strength: 2100 N/5 cm
- Transversal strength: 2300 N/5 cm

ITEM #	PACKAGING	COVERAGE
170720	39” x 160’/roll	475 ft ²



DUREX FIBERGLASS REINFORCING MESH

03 21 21

High Quality Fiber Reinforced Glass Mesh

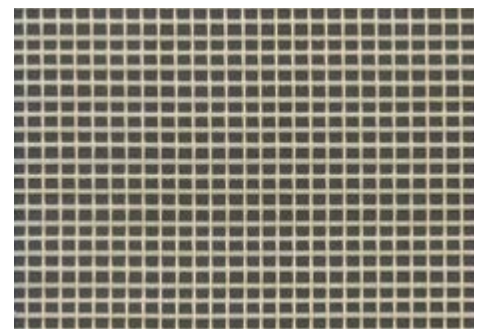
DUREX FIBERGLASS REINFORCING MESH is an alkali resistant, flame-spread retardant, durable and highly flexible reinforcing mesh specially designed for all DUREX Wall Systems. It is designed to avoid cracks during settling and under expansion/shrinkage loads. DUREX FIBERGLASS MESH is laid over the substrate or over insulation panels and fully imbedded in a Durex Polymer Modified Base Coat. High tensile strength and elastic properties of the fiberglass mesh improves overall resistance and durability of your Durex coating.

Possible Uses

Reinforcement for DUREX UNIPLAST, FLEXCRETE and MONOBASE. BASE COATS; reinforcement for DUREX ECTOFLEX AIR / VAPOUR BARRIER and Waterproofing Membrane; reinforcement for crack bridging in masonry substrates.

- Alkali Resistant - Resistant to damage by alkalis even if the moisture/cement content in the plaster is high
- Flame-Spread Retardant
- Durable and Highly Flexible
- CAN/ULC S716 Tested and Approved Meets and exceeds stringent industry specifications and requirements

ITEM #	ITEM NAME	PACKAGING	COVERAGE
170201	Standard Fiberglass Mesh 040 38” x 150’ (4.5oz.)	38” x 150’ /roll	475 ft ² /roll



Restoration & Repair Guides

CONCRETE RESTORATION GUIDE

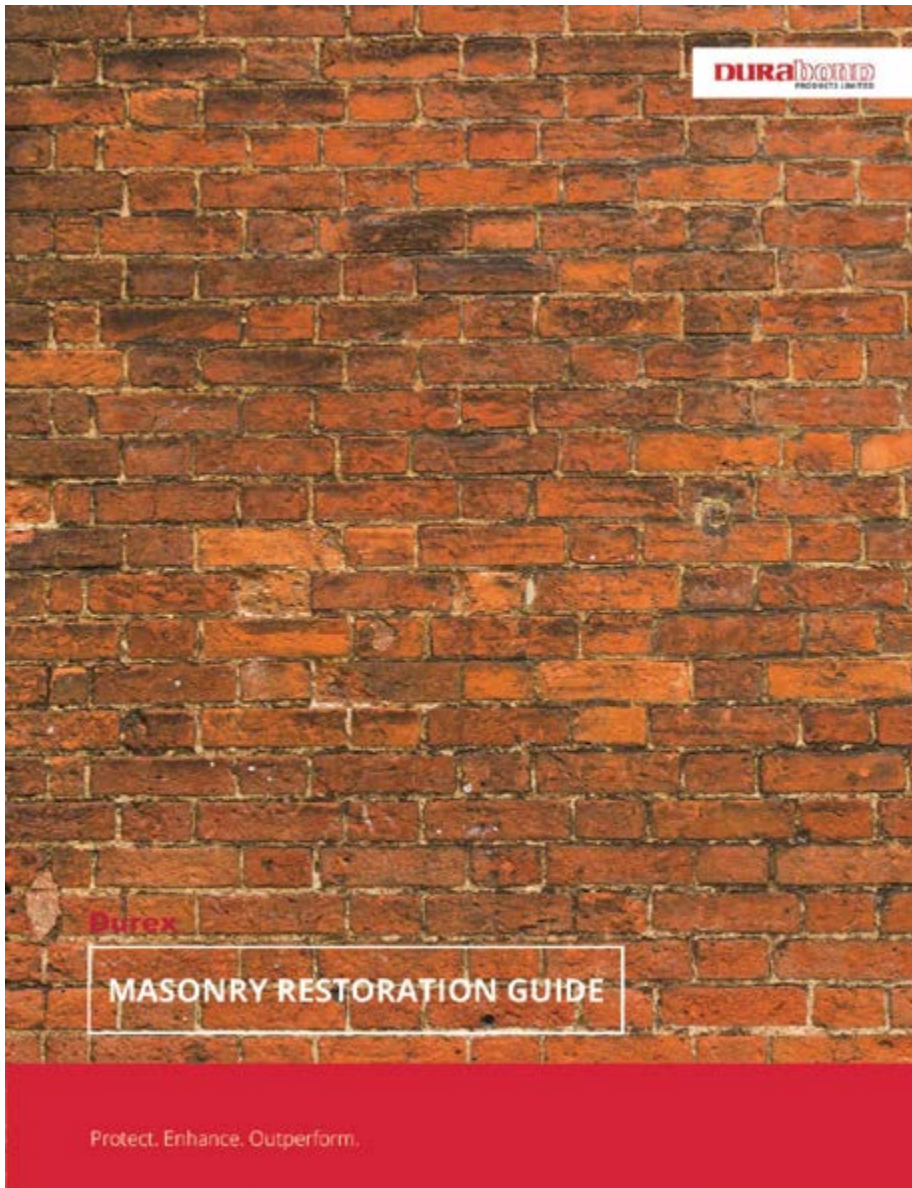
For complete concrete and masonry restoration and repair instructions please refer to the Concrete Restoration Guide and Masonry Restoration Guide.



Restoration & Repair Guides

MASONRY RESTORATION GUIDE

For complete concrete and masonry restoration and repair instructions please refer to the Concrete Restoration Guide and Masonry Restoration Guide.



Concrete & Masonry Restoration

- Concrete Mix Design Charts
- Durex Dur-A-Patch
- Durex Dryplast
- Durex Dryplast Concentrate
- Durex Uniplast & Acrylic Resin Bond
- Durex Flexcrete
- Durex Ectoflex
- Durex Dur-A-Top 15 Self Leveling Cement
- Durex Sand Mix
- Portland Cement
- Tremco Dymonic 100
- Tremco Vulkem 45 SSL
- Durex EMC Knife Grade
- Durex Acrybond Concentrate
- Acrylic Resin Bond
- Dur-A-Patch Liquid Additive
- Durex Cement Bond
- Durex Acrybond 'S'
- Durex AR Grade 1" Grid Concrete Reinforcing Mesh
- Durex E-Grade 1½" Grid Concrete Reinforcing Mesh (AR Coated)
- Durex Fiberglass Reinforcing Mesh
- Concrete Restoration Guide
- Masonry Restoration Guide

Moisture Protection

- Durex Flexcrete
- Durex Blue Shield
- Durex Dur-A-Mastic 100
- Durex Green Guard Plus
- Durex Ectoflex
- Durex Barrier Seam Tape
- Durex Flex Seal
- Durex Flex Seal VP
- Durex Dur-O-Lastic
- Durex Ectoflex
- Super Stick Building Tape
- Durex Flex-Seal Wall Flashing Tape
- Durex Flex-Seal Red Primer
- Durex Durathane B500
- Durex Uraflex 360/375UV
- Durex Acrotel SB
- Durex Uraflex Traffic Bearing Waterproofing System
- Durex Mechanical Room Waterproofing System
- Durex Garbage Room Waterproofing System
- Durex Uraflex 360
- Durex Uraflex 361
- Durex Uraflex 375 UV

Protective Coatings & Sealers

- Durex Brush Coat
- Acrotel EC-A
- Durex Ecto-Sil 1000

- Durex EMC
- Durex EMC Knife Grade
- Durex Roltex
- Durex Dur-X-Cel 100
- Durex Dur-X-Cel Primer
- Durex Acrotel SB Non-Porous Primer
- Durex Durathane 90
- Durex Epotel Anti-Corrosion Metal Primer
- Durex Epotel WB DTM
- Durex TBC
- Durex Acrotel SB Metal Primer
- Durex Acrotel DTM
- Durex Acrotel SB Primer
- Durex Acrotel SB Metal
- Durex Wall Seal
- Durex Dur-A-Seal A28
- Durex Dur-A-Seal A.G.
- Durex Dur-A-Seal XL 250
- Durex Acrotel SB Floor Grade
- Durex Concrete Sealer WB 18/25
- Durex Epotel 80
- Durex Diamond LOK
- Durex Silane WRS 40/100

Floor Coatings

- Durex Epotel 100 GSC
- Durex Epotel 100 GSC Rapid Cure
- Durex Epotel 100 GSA
- Durex Uraflex 100
- Durex Uraflex 100 OP
- Durex Epoxy Guard Pro
- Durex Epotel 100 UR
- Durex Epotel 100 Novolac
- Durex Epotel 100 CR
- Durex Duracrete Broadcast
- Durex Duracrete Trowel
- Durex Epotel 100 TL
- Durex Duracrete Aggregate
- Durex Uracrete
- Durex Art-I-Stone
- Durex Dur-A-Flake
- Durex Dur-A-Quartz Broadcast
- Durex Dur-A-Quartz Trowel
- Durex Granitech
- Durex Acrutel 50
- Durex Aquathane
- Durex Durathane 90
- Durex Polyuretel
- Durex Epotel Multi-Prime
- Durex Moisture Block 100
- Durex Uraflex Primer
- Durex Uraflex Citrus Primer

- Durex Epotel 100 Crack Filler
- Durex Anti Slip Aggregates
- Durex Acrotel SB
- Durex TBC
- Durex Epoxy Guard
- Durex Epoxy Guard Pro

Exterior Wall Systems

- Durex Flexlite Select
- Durex Quantum Select
- Durex Quantum Select MF
- Durex Quantum 5.0
- Durex Quantum Select ICF
- Durex Equalite
- Durex Insulite EW-17
- Durex Flexlite ADH
- Durex Lite Coat
- Durex Stucco Lite
- Durex Stucco Wall
- Durex ICF Coating

Architectural Coatings & Decorative Finishes

- Durex Marble Coat 1.5
- Durex Marble Coat 1.0
- Durex Venecian
- Pebble Float
- Durex Sandex
- Durex Trim Spray
- Durex Stucco Spray
- Durex Graffiato
- Durex Sandstone
- Durex Rasato
- Durex Rustico
- Durex Antico Glaze
- Durex Trowel Grade Stucco
- Durex Gemstone
- Durex Granite
- Durex Stonetex
- Durex Crystal Coat
- Durex Cromatex
- Durex Aggrex
- Durex Rough Cast
- Durex Decorative Stucco Ext
- Durex Monocapa
- Durex Monofino
- Durex Dur-A-Brick
- Durex Brush Coat
- Durex EMC
- Durex Dur-X-Cel 100
- Durex Roltex
- Durex Kolor Gard
- Durex Elastomeric Brush Coat
- Durex Elastomeric Graffiato
- Durex Elastomeric Marble Coat 1.0
- Durex Elastomeric Marble Coat 1.5
- Durex Elastomeric Sandex
- Durex Elastomeric Venecian

- Acroplast Venetian Plaster
- Durex Super Stipple
- Crackle Size Basecoat
- Crackle Stone & Antique Topcoat
- Crackle Glaze
- Coraltex Metallic Hammer Tone
- Scumble Glaze
- Extender Glaze
- Suede Latex
- Metallic Paint
- Luster Plaster (Orystone)
- Acronament (Gesso)
- Durex Texture Spray
- Durex Ceiling Coat
- Durex Plaster Bond Blue & White

EIFS Stucco & Components

- Durex Uniplast & Durex Acrybond 'S
- Durex Flexcrete'
- Durex Monobase
- Durex VCA 3.0 Insulation Adhesive
- Durex Monofino
- Durex Monocapa
- Durex Pool Marble Finish
- Durex Trim Coat
- Durex Fiberglass Reinforcing Mesh
- Durex Intermediate Mesh
- Durex High Impact Mesh
- Durex Detail Fiberglass Mesh
- Durex Trim Mesh
- Durex Barrier Seam Tape
- Durex Quantum Select
- Durex Quantum 5.0
- Durex Flexlite Select EPS
- Type 1 Eps
- Type 2 Eps
- Type 3 Eps
- Durex Equalite Mineral Fiber Insulation
- Durex Boundary Boards
- Durex Flexlite Select Vent Board
- Durex Quantum Select Vent Boards
- Durex Dur-A-Mastic 100
- Durex Blue Shield
- Durex Flexcrete
- Durex Green Guard Plus
- Durex Ectoflex
- Durex Barrier Seam Tape
- Durex Flex-Seal
- Flex-Seal VP
- Durex Primerless
- Durex Primerless EIFS Tape

- Durex EIFS Tape
- Durex Flex Seal Mastic
- Durex Flex Seal Wall Flashing Tape
- Durex Flex Seal Red Primer
- Durex Drainage Mat
- Durex Drainage Vent
- Durex Drainage Track
- Durex Uni-Flash Drainage Track
- Kick-Out Flashing
- Window Drips
- Starter Strip EIFS Drainage
- Durex Dryplast
- Durex Uniplast & Acrylic Resin Bond
- Durex Flexcrete
- Permabase Cement Board
- Durex Glass Gold
- Stucco & Stone Veneer Drainage Matt
- Mesh Lath / Rib Lath
- Metal Corner Bead
- Metal Expansion Joints
- Metal Plaster Stop / Casing Bead
- Plastic Corner Bead
- Plastic Plaster Stop
- X-66 Expansion Joint
- Soffit Vent
- Tremco Spectrum 3
- Tremco Spectrum 4-TS
- Backer Rod
- Durex Caulked Joint Weepers
- Caulk Guns

Tools & Accessories

- MJP Anchors
- Steel Fasteners
- Ucan Scru-It Masonry Anchor
- Pin Bolts
- U-Drive - Concrete Nails
- Cement Board Anchors
- Roof Grip Screws
- ULP Plates
- Wind-Devil WDP Plates
- Long-Lock Plates
- SDS Hammer Drill Bit
- Groove Tool Trowel
- Straight Groove Blade
- Portable Hot Groover
- Windlock 2-QC Blue Hot Knife
- Yellow Hot Knife Kits
- Hot Wire Machine Accessories
- V-Groove Sleds
- V-Groove Blades
- Square Groove Reveals
- Square Groove Blades
- Angled Groove Reveals
- Angled Groove Blades
- Beveled Groove Sleds

- Beveled Groove Blades
- Permashape Golden Stainless Steel "Broken In" Trowel
- Permashape High Carbon "Broken In" Trowel
- Permashape Golden Stainless Steel w/ Durasoft Trowel
- Golden Stainless Steel w/ Durasoft Xtralite Trowel
- Swimming Pool Trowel
- Finishing Float
- Inox Stainless Steel Venetian Trowels
- Corner Trowels
- Notched Trowel
- Tuck Trowel
- Margin Trowel
- Featheredges
- Hawks
- Ornament Tools
- Rub Bricks & Accessories
- Bucket Scoops
- Stainless Steel Putty Knives
- Putty Knives
- Knives
- Durarasp
- Tiger Claw Durarasp
- Marshalltown Rasp
- Duravac Heavy Duty Electric Rasp + Shop-Vac Back Pack
- Hopper & Texture Guns
- Spray Foam, Guns & Cleaner
- Mixing Paddles
- Mixing Drills
- Chalk Line
- Staple Guns/Tackers
- Staples
- Measuring Tape/Levels
- Top Quality Brushes
- Medium Quality Brushes
- Roller Cage & Refills
- Fiberglass Pole Extensions
- Paint Trays & Accessories
- Wash Brushes
- Masking & Joint Tape
- Stucco Tape & Specialty Masking Tapes
- Tarp/Polyethylene/Masking
- Window Film Protection Tape
- Kraft Paper
- Squeegees
- Spike Shoes
- Spike Roller
- Flooring Trowels
- Cam Guage Rakes

Durex®

CIRCA 1990



DURabond 

Durabond Products Limited

www.durabond.com

Head Office - Toronto

55 Underwriters Road
Scarborough, ON M1R 3B4
(416) 759 4474

Mississauga Office

6178 Netherhart Road
Mississauga, ON L5T 1B7
1 (905) 565 9283

Western Canada Office

14345 120th Avenue
Edmonton, Alberta T5L 2R8
1 (780) 451 6364

info@durabond.com

1 (877) 387 2266