

Durex®



DURabond **50**
YEARS
1967-2017

Contractor's Guide

Building Products & Solutions

EIFS & STUCCO COMPONENTS

Pushing the Envelope for Excellence

You have one thing on your mind when it comes to choosing building products & solutions – they have to do more than perform today; they have to outperform for the long term. That’s why for over 50 years, Durabond has been the choice for those who expect more.

We are a leading manufacturer and developer of Exterior Insulated Cladding Systems, Specialized Architectural Coatings, Concrete Restoration Products, Protective Coatings, and a wide range of other related construction products. Whether a high-rise building or a single-family dwelling, a new construction or a restoration project, we understand the critical importance of getting it right the first time.

Our innovative, highly-engineered and tested systems are a creative solution for architects and designers. We are a tried, true and trusted choice for builders, engineers and homeowners who demand durability, superior flexibility, and aesthetic beauty.



Application Method Legend

Use of Product



Recommended



Not Recommended



Safety Hazard

Application Methods



Trowel



Roller



Spray



Sponge





EIFS & Stucco Components

Durabond designs and manufactures a wide range of products and accessories for the installation of Durex® Wall Systems. All products are designed, engineered and thoroughly tested to meet or exceed Canadian building code, fire code and CCMC requirements.

- Basecoats & Adhesives
- Insulation
- Reinforcing Fiberglass Mesh
- Air/Moisture Barriers & Membranes
- Components & Accessories
- Sealants

142 EIFS Basecoats & Insulation Adhesives

Durex Uniplast & Durex Acrybond 'S'
Durex Flexcrete
Durex Monobase
Durex VCA 3.0 Insulation Adhesive

146 Specialty Base Coats

Durex Monofino
Durex Monocapa
Durex Pool Marble Finish
Durex Trim Coat

148 Fiberglass Reinforcement

Durex Fiberglass Reinforcing Mesh
Durex Intermediate Mesh
Durex High Impact Mesh
Durex Detail Fiberglass Mesh
Durex Trim Mesh
Durex Barrier Seam Tape

154 Insulation

Durex Quantum Select
Durex Quantum 5.0
Durex Flexlite Select EPS
Type 1 Eps
Type 2 Eps
Type 3 Eps
Durex Equalite Mineral Fiber Insulation
Durex Boundary Boards

162 Air/Moisture Barriers & Membranes

Durex Quantum Select Vent Boards
Durex Flexlite Select Vent Board
Durex Dur-A-Mastic 100

Durex Blue Shield
Durex Flexcrete
Durex Green Guard Plus
Durex Ectoflex
Durex Barrier Seam Tape
Durex Flex-Seal Flex Seal VP

167 Transition & Interfacing Membranes

Durex Primerless EIFS Tape
Durex EIFS Tape
Durex Flex Seal Mastic
Durex Flex Seal Wall Flashing Tape
Durex Flex Seal Red Primer

170 EIFS Components & Accessories

Durex Drainage Mat
Durex Drainage Vent
Durex Drainage Track
Durex Uni-Flash Drainage Track
Kick-Out Flashing
Window Drips
Starter Strip EIFS Drainage

173 Stucco & Direct Applied Basecoats & Plasters

Durex Dryplast
Durex Uniplast & Acrylic Resin Bond
Durex Flexcrete

176 Stucco & Direct Applied Accessories

Permabase Cement Board
Dens Glass Gold
Stucco & Stone Veneer Drainage Matt
Mesh Lath / Rib Lath
Metal Corner Bead
Metal Expansion Joints
Metal Plaster Stop / Casing Bead
Plastic Corner Bead
Plastic Plaster Stop
X-66 Expansion Joint
Soffit Vent

182 Sealants/Caulking

Tremco Spectrum 3
Tremco Spectrum 4-TS
Backer Rod
Durex Caulked Joint Weepers
Caulk Guns

EIFS Basecoats & Insulation Adhesives

Durex® EIFS Basecoats and Insulation Adhesives are a line of high-quality polymer modified cementitious plasters formulated for the Canadian climate. They are CCMC Approved and ULC Listed that meet and exceed the high standards set for Canadian EIFS applications.



EIFS BASECOATS

| Product | Mixed With | Mixing Ratio | Coverage | Features |
|-----------------|---------------|---------------------------|-------------------------|--|
| Durex Uniplast | Acrybond "S" | 1 bag: 5 Lts Acrybond "S" | 75-100 ft ² | Non-Combustible, Economical, Ease of Application |
| Durex Flexcrete | Flexcrete "B" | 1 Pail: 1 Bag | 100-120 ft ² | High flexibility, Low Temperature tolerance. Can be mixed with Portland Cement |
| Durex Monobase | Water | 1 bag: 5 Lts water | 75-90 ft ² | User Friendly, Non-Combustible |

INSULATION ADHESIVES

| Product | Mixed With | Mixing Ratio | Coverage | Features |
|-----------------|---------------|--------------------|-------------------------|--|
| Durex VCA | VCA "B" | 1 Pail: 1 Bag | 125-150 ft ² | High Build for High Drainage |
| Durex Flexcrete | Flexcrete "B" | 1 Pail: 1 Bag | 175-200 ft ² | High flexibility, Low Temperature tolerance. |
| Durex Monobase | Water | 1 bag: 5 Lts water | 85-100 ft ² | Ease of Use |

EIFS Basecoats & Insulation Adhesives

DUREX UNIPLAST & DUREX ACRYBOND 'S'

09 24 00 / 03 05 00

Cement Based Plaster Mix (Base Coat)

DUREX UNIPLAST is a cement based plaster mix available in fine, medium and coarse grades. It incorporates a well-balanced blend of selected aggregates and fillers perfectly formulated to provide ideal physical properties and excellent workability features. It is a versatile product which can be used in several of the Durex Wall Systems as both scratch and base coats. It can also be used for concrete wall repair work and as a quality paring coat over masonry and concrete.

DUREX UNIPLAST is rated non-combustible, complying with the National Building Code as a material to protect foamed plastic insulation for exterior applications. It is ready to use by being mixed with ACRYLIC BOND S additive. It has low shrinkage, resulting in minimum cracking. Available in white and grey colours.



Possible Uses

DUREX UNIPLAST is a versatile product which can be used in several of the Durex Wall Systems as both scratch and as base coats. It can also be used for concrete wall repair work and as a quality paring coat over masonry and concrete.

| ITEM # | ITEM NAME | PACKAGING | UNITS/PALLET | COVERAGE |
|--------|------------------------------|-------------|----------------|-----------------------------|
| 010301 | DUREX Uniplast Grey Fine | 22.7 kg/bag | 63 bags/pallet | 75-100 ft ² /bag |
| 010302 | DUREX Uniplast Grey Medium | 22.7 kg/bag | 63 bags/pallet | 50-75 ft ² /bag |
| 010303 | DUREX Uniplast Grey Coarse | 22.7 kg/bag | 63 bags/pallet | 25-35 ft ² /bag |
| 010321 | DUREX Uniplast White* Fine | 22.7 kg/bag | 63 bags/pallet | 75-100 ft ² /bag |
| 010322 | DUREX Uniplast White* Medium | 22.7 kg/bag | 63 bags/pallet | 50-75 ft ² bag |
| 010323 | DUREX Uniplast White* Coarse | 22.7 kg/bag | 63 bags/pallet | 25-35 ft ² /bag |

DUREX ACRYBOND 'S'

100% Acrylic EIFS Base Coat Polymer Modifier

DUREX ACRYBOND S is a water based 100% acrylic polymer cement additive. DUREX ACRYBOND S has been specially formulated to provide maximum adhesion and ideal application properties when used as the catalyst in the mix with DUREX UNIPLAST. It is the typical mix for the Durex family of exterior insulation and finish systems (EIFS).

Possible Uses

DUREX ACRYBOND S is used as scratch and base coats when mixed with DUREX UNIPLAST.



| ITEM # | ITEM NAME | PACKAGING | COVERAGE |
|--------|--------------------|-------------|-----------------|
| 010212 | DUREX Acrybond 'S' | 4 L/jug | 4 gal/box |
| 010213 | DUREX Acrybond 'S' | 18.9 L/pail | 48 pails/pallet |

EIFS Basecoats & Insulation Adhesives

DUREX FLEXCRETE

07 24 00

Flexible Polymer-based Cementitious Base Coat (Base Coat & Adhesive)

DUREX FLEXCRETE is a two component polymer based mortar consisting of a water based acrylic liquid component Flexcrete, mixed with the dry component Flexcrete "B." DUREX FLEXCRETE mix has been developed to utilize advanced polymer technology to combine the strength and toughness of polymer modified cement with the flexibility of synthetics.

Possible Uses

Durex Flexcrete is used as the base coat for Durex® Insulated and Non-Insulated Wall Systems. Durex® Flexcrete is also used as an insulation adhesive for all Durex® Insulated Wall Systems. It is a Class 3 Air Barrier when applied at a minimum thickness of 1.5mm (1/16") Also; it is the best available cementitious joint treatment and base coat for cement board substrates.



| ITEM # | ITEM NAME | PACKAGING | UNITS/PALLET | COVERAGE |
|---------|-------------------------|-------------|----------------|---|
| 010300 | DUREX Flexcrete (Pail) | 30 kg/bag | 48 bags/pallet | 100-120 ft²/pail (Air Barrier) |
| 010300B | DUREX Flexcrete B (Bag) | 22.7 kg/bag | 63 bags/pallet | 100-120 ft²/pail (Base Coat) 175-200 ft²/pail (Adhesive) |

DUREX MONOBASE

07 24 00

Flexible Polymer-based Cementitious Base Coat (Base Coat & Adhesive)

DUREX MONOBASE is a single component, polymer-based cementitious mortar that has been developed to utilize advanced polymer technology to combine the strength and toughness of polymer modified cement with the flexibility of synthetics.

Possible Uses

Durex® Monobase can be used as the base coat for Durex® Insulated and Non-Insulated Wall Systems. Durex® Monobase is also used as an insulation adhesive for all Durex® Insulated Wall Systems. Also; it is an excellent cementitious joint treatment and base coat for cement board substrates.



| ITEM # | ITEM NAME | PACKAGING | UNITS/PALLET | COVERAGE |
|---------|----------------|-------------|----------------|--|
| 010300D | DUREX Monobase | 22.7 kg/bag | 63 bags/pallet | 75-90 ft²/bag (Base Coat) 85-100 ft²/bag (Adhesive) |

EIFS Basecoats & Insulation Adhesives

DUREX VCA 3.0 INSULATION ADHESIVE

07 24 00

Polymer-Based Cementitious Insulation Adhesive (Adhesive)

DUREX VCA 3.0 INSULATION ADHESIVE is a two-component polymer-based cementitious insulation adhesive used with most Durex Moisture Managed EIF Systems. A water based acrylic liquid component is mixed with a specially formulated dry cementitious powder containing coarse sand aggregates to create a cavity between the insulation board and the substrate.



Possible Uses

DUREX VCA 3.0 INSULATION ADHESIVE is specially suited for adhering expanded polystyrene insulation (EPS) and extruded polystyrene insulation (XPS) to a variety of surfaces such as concrete, brick, concrete block, cement board, glass fiber faced gypsum sheathings, gypsum board, plywood and a few others.

Advantages

- Superior adhesion to various inorganic substrates
- Combines flexibility of synthetics and the strength of cement
- Coarse aggregate creates cavity between the insulation board and the substrate to allow for drainage of incidental moisture
- Superior adhesion to cured Durex Green Guard, Blueshield, Flexcrete and Mastic 100
- Allows for excellent quality control on job site



| ITEM # | ITEM NAME | PACKAGING | UNITS/PALLET | COVERAGE |
|------------|----------------------|-------------|-----------------|--|
| 010300VCA | DUREX VCA 3.0 Part A | 22.7 kg/bag | 63 bags/pallet | 125-150 ft ² /bag (Adhesive) |
| 010300VCAB | DUREX VCA 3.0 Part B | 18.9 L/pail | 48 pails/pallet | (mix 1 pail to one 1 bag) |

Specialty Base Coats

DUREX MONOFINO

09 24 00

Fiber Reinforced Cement Plaster Mix

DUREX MONOFINO is a glass fiber reinforced mixture of Portland cement and plaster, formulated with numerous ideal features to facilitate and simplify its application. This flexible cementitious coating is suitable for both interior and exterior surfaces.

Possible Uses

DUREX MONOFINO can be used as the topcoat to the DUREX MONOCAPA or as a base coat to the Durex Lite Coat System. Furthermore, this versatile wall coating system can be used as a finish coat, with or without pigmentation, to cover many interior or exterior surfaces such as gypsum, brick, concrete, cement board, fiber reinforced gypsum and many others. Durex Lite Coat and Durex Stucco Lite Systems.



| ITEM # | ITEM NAME | PACKAGING | UNITS/PALLET | COVERAGE |
|--------|----------------|-------------|----------------|------------------------------|
| 010371 | DUREX Monofino | 22.7 kg/bag | 50 bags/pallet | 120-150 ft ² /bag |

DUREX MONOCAPA

09 24 00

Polymer-Modified Medium Cementitious Plaster

DUREX MONOCAPA is a polymer modified, Portland cement-based plaster, which has been formulated with numerous ideal features to provide a versatile, hard, strong, durable, fire and weather resistant surfacing material. DUREX MONOCAPA can be used in a variety of exterior/interior applications both on vertical or horizontal planes and in the hands of a skilled tradesman can be worked into patterns and textures on flat or curvilinear surfaces.

Possible Uses

DUREX MONOCAPA can be used as a base coat in the Durex Lite Coat and Durex Stucco Lite Systems, over new or existing substrates such as masonry, concrete, concrete block, brick, or other cementitious renderings.



| ITEM # | ITEM NAME | PACKAGING | UNITS/PALLET | COVERAGE |
|--------|----------------|-------------|----------------|----------------------------|
| 010372 | DUREX Monocapa | 22.7 kg/bag | 63 bags/pallet | 20-50 ft ² /bag |

Specialty Base Coats

DUREX POOL MARBLE FINISH

09 24 00

Polymer-Based High Build Cementitious Plaster Mix

DUREX POOL MARBLE FINISH is an acrylic modified cementitious multiple coat system for finishing concrete swimming pool interiors. It is specially designed for submerged surfaces. It is trowel applied and is a matrix of white cement, selected marble aggregates and high quality acrylic resins to render smooth slip resistant finishes.

Possible Uses

Some of the areas where DUREX POOL MARBLE can be used are: finishing concrete swimming pool interiors, for protection against chlorine; water fountains and any surface in permanent contact with water. It is also excellent for residential and commercial applications. Durex Lite Coat and Durex Stucco Lite Systems.



| ITEM # | ITEM NAME | PACKAGING | UNITS/PALLET | COVERAGE |
|--------|--------------------------|-------------|----------------|---------------|
| 010305 | DUREX Pool Marble Finish | 22.7 kg/bag | 63 bags/pallet | 20-50 ft²/bag |

DUREX TRIM COAT

09 24 00

Highly Flexible Cementitious Moulding/Trim Base Coat

DUREX TRIM BASE COAT is a two component polymer based cementitious base coat consisting of a water based acrylic liquid component DUREX TRIM BOND mixed with the dry component DUREX TRIM COAT. The DUREX TRIM BASE COAT mix utilizes advanced polymer technology combining the strength and toughness of polymer modified cement with the flexibility of synthetics.

Possible Uses

It is used primarily as the base coat for expanded polystyrene architectural mouldings and architectural moulding accessories. It is typically applied, using different methods of extrusion, in factory controlled environments of architectural moulding manufacturing facilities.



| ITEM # | ITEM NAME | PACKAGING | UNITS/PALLET | COVERAGE |
|--------|------------------------|-------------|-----------------|----------------|
| 010261 | DUREX Trim Coat Fine | 22.7 kg/bag | 63 bags/pallet | 80-120 ft²/bag |
| 010262 | DUREX Trim Coat Medium | 22.7 kg/bag | 63 bags/pallet | 50-75 ft²/bag |
| 010266 | DUREX Flex Bond (Pail) | 18.9 L/pail | 48 pails/pallet | - |
| 010268 | DUREX Flex Bond (Tote) | 1000 L/tote | - | - |

Fiberglass Reinforcement

| FIBREGLASS REINFORCEMENT MESH | | | | |
|-------------------------------------|--------------------------------------|--|--------------------------------|--|
| Product | Weight | Roll Size | Coverage | Features |
| 4.5oz Standard 040 Mesh | 4.5oz/SY (152 gm/m ²) | 38" x 150LF roll | 475 SF/roll | Reinforcement for all Durex® Wall Systems, Cementitious Plasters, Crack Repairs and Miscellaneous Reinforcing Applications |
| 6oz Intermediate 039 Mesh | 6oz / SY (203 gm/m ²) | 38" x 150LF roll | 475 SF/roll | Upgrade to standard 4.5oz mesh Medium duty reinforcement |
| 11oz Intermediate 323 Mesh | 11oz/SY (373 gm/m ²) | 38" x 150LF roll | 475 SF/roll | Upgrade to 6.0oz mesh Medium duty reinforcement |
| 15oz High Impact 330 Mesh | 15oz/SY (509 gm/m ²) | 38" x 75LF roll | 237 SF/roll | High-Impact Reinforcement mesh Strongly recommended for all impact prone areas |
| 21oz High Impact 391 Mesh | 21oz/SY (712 gm/m ²) | 38" x 75LF roll | 475 SF/roll | Ultimate High-Impact Reinforcement mesh for impact prone areas |
| DETAIL / ADHESIVE MESH | | | | |
| Regular Detail 040 Mesh | 4.5oz/SY (152 gm/m ²) | 4", 9", 12.5" x 150LF roll | 150 Linear Feet | Reinforcement of smaller details, strips and concrete crack repair |
| Standard 040 - Adhesive Backed Mesh | 4.5oz/SY (152 gm/m ²) | 4", 9", 12.5" x 150LF roll 38" x 150LF roll | 150 Linear Feet 475 SF/roll | Reinforcement of smaller details, strips and concrete crack repair. Self-Adhesion for ease of application |
| 2.6oz Trim Mesh 033 | 2.6oz/SY (88gm/m ²) | 39" x 150LF roll | 425 SF/roll | Flexible, easy to use adhesive back mesh for foam shapes, starter strips and mouldings |
| Barrier Seam Tape | 2.25oz/SY (76 gm/m ²) | 4" x 160LF roll | 160 Linear Feet | Spun Bonded Polyester Mesh for use over sheathing joints for proper application of a Water Resistant Barrier |
| Corner High Impact Mesh | 9oz/SY (305 g/m ²) | 12" x 75LF roll | 75 LF/roll | High-Impact Reinforcement mesh for protection and reinforcement of corners |
| Corner Mesh Bead | 4.5oz/SY | 98" PCS (2.5m) | 98" (2.5m) | Plastic Reinforced corner bead with overlapping 4.5oz Mesh. |

Fiberglass Reinforcement

CCMC EVALUATION #13103-R

Fiberglass Mesh

Fiberglass Reinforcing Mesh

Detail Fiberglass Mesh

- Alkali Resistant
- CCMC Tested & Approved
- Flame Retardant
- Made in Canada / Europe



DUREX FIBERGLASS REINFORCING MESH

03 21 21

High Quality Fiber Reinforced Glass Mesh

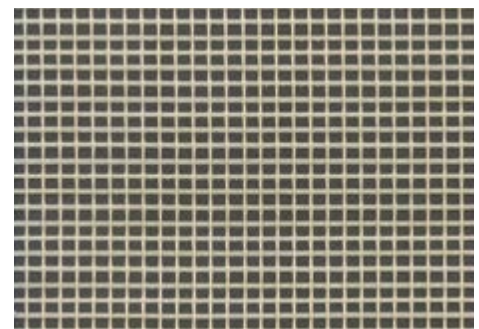
DUREX FIBERGLASS REINFORCING MESH is an alkali resistant, flame-spread retardant, durable and highly flexible reinforcing mesh specially designed for all DUREX Wall Systems. It is designed to avoid cracks during settling and under expansion/shrinkage loads. DUREX FIBERGLASS MESH is laid over the substrate or over insulation panels and fully imbedded in a Durex Polymer Modified Base Coat. High tensile strength and elastic properties of the fiberglass mesh improves overall resistance and durability of your Durex coating.

DUREX FIBERGLASS MESH is a critical component for the Durex family of Wall Systems and Coatings. Developed and tested in compliance with Canadian Building Codes, EIFS Council of Canada Standards and is ULC Fire Rated.

Possible Uses

Reinforcement for DUREX UNIPLAST, FLEXCRETE and MONOBASE. BASE COATS; reinforcement for DUREX ECTOFLEX AIR / VAPOUR BARRIER and Waterproofing Membrane; reinforcement for crack bridging in masonry substrates.

- Alkali Resistant - Resistant to damage by alkalis even if the moisture/cement content in the plaster is high
- Flame-Spread Retardant
- Durable and Highly Flexible
- CAN/ULC S716 Tested and Approved -Meets and exceeds stringent industry specifications and requirements



| ITEM # | ITEM NAME | PACKAGING | COVERAGE |
|--------|---|------------------|---------------------------|
| 170201 | Standard Fiberglass Mesh 040 38" x 150' (4.5oz.) | 38" x 150' /roll | 475 ft ² /roll |

Fiberglass Reinforcement

DUREX INTERMEDIATE MESH

03 21 21

Durex Speciality Reinforcing Fiberglass Meshes are used in conjunction or to replace the standard meshes to increase impact resistance of the base coat lamina of EIFS. Higher impact resistance is recommended in areas within two meters from grade where the wall is in areas of high traffic or subject to above average impact (in schools and commercial buildings).

Intermediate Mesh

For medium duty reinforcing application. Used in conjunction with high impact meshes to create the ultimate performance in impact resistance.



Intermediate Fiberglass Mesh

| ITEM # | ITEM NAME | WEIGHT | PACKAGING | COVERAGE |
|--------|---|--------|------------|---------------------------|
| 170500 | Intermediate Fiberglass Mesh 039 38" x 150' (6oz.) | 4.8 kg | 38 in/roll | 475 ft ² /roll |
| 170501 | Intermediate Fiberglass Mesh 323 38" x 75' (11oz.) | 6 kg | 38 in/roll | 237 ft ² /roll |

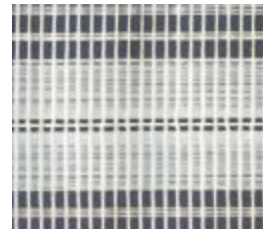
DUREX HIGH IMPACT MESH

03 21 21

Designed to significantly increase the impact resistance and durability of Durex Wall Systems in high-traffic areas that are exposed to frequent impacts. Commonly used and specified at all ground floors, up to two metres above grade.

Strongly Recommended For

- All Impact Prone Areas
- Commercial Complexes and Shopping Malls
- High-Rise Residential Dwellings
- Institutional Projects, especially schools
- Retrofits and Recladding Projects



Corner Fiberglass Mesh



High Impact Fiberglass Mesh

| ITEM # | ITEM NAME | WEIGHT | PACKAGING | COVERAGE |
|--------|--|--------|------------|---------------------------|
| 170600 | High Impact Fiberglass Mesh 330 38" x 75' (15oz.) | 6 kg | 38 in/roll | 237 ft ² /roll |
| 170601 | High Impact Fiberglass Mesh 391 38" x 75' (21oz.) | 8 kg | 38 in/roll | 237 ft ² /roll |

CORNER FIBERGLASS MESH

| ITEM # | ITEM NAME | WEIGHT | PACKAGING | COVERAGE |
|--------|---|--------|------------|--------------------------|
| 170700 | Corner Fiberglass Mesh Impact 046 12" x 75' (9oz.) | 3.5 kg | 12 in/roll | 75 ft ² /roll |
| 160300 | Plastic Corner Bead with Fibreglass Mesh (2.5m long) | - | 98" pc | 98"/2.5m |



Plastic Corner Bead Mesh

Fiberglass Reinforcement

DUREX DETAIL FIBERGLASS MESH

03 21 21

All Durex meshes are standard 4oz. weight. Available in regular and self-adhesive.

Possible Uses

Used for treatment of substrate sheathing joints, for back wrapping of insulation edges at system terminations and expansion joints.



| ITEM # | ITEM NAME | WEIGHT | PACKAGING | COVERAGE |
|--------|--|--------|------------|---------------------|
| 170400 | Detail Fiberglass Mesh 040 4" x 150' (4 oz.) | 0.8kg | 4"/roll | 4" x 150 lf/roll |
| 170401 | Detail Fiberglass Mesh 040 9-1/2" x 150' (4 oz.) | 1.0 kg | 9.5"/roll | 9.5" x 150 lf/roll |
| 170401 | Detail Fiberglass Mesh 040 12-1/2" x 150' (4 oz.) | 1.2 kg | 12.5"/roll | 12.5" x 150 lf/roll |

| ITEM # | ITEM NAME | WEIGHT | PACKAGING | COVERAGE |
|--------|---|--------|------------|--------------------|
| 170310 | Adhesive Detail Mesh 040 4" x 150' (4oz.) | 0.4 kg | 4"/roll | 4" x 150 lf/roll |
| 170311 | Adhesive Detail Mesh 040 9-1/2" x 150' (4oz.) | 1.0 kg | 9.5"/roll | 9.5" x 150 lf/roll |
| 170312 | Adhesive Detail Mesh 040 12-1/2" x 150' (4oz.) | 1.2 kg | 12.5"/roll | 150 lf/roll |
| 170313 | Adhesive Detail Mesh 040 38" x 150' (4oz.) | 4.0 kg | 38"/roll | 150 lf/roll |

Fiberglass Reinforcement

DUREX TRIM MESH

03 21 21

Trim Mesh is an adhesive back mesh and is mainly used for reinforcement of architectural mouldings and trim base coats.

Possible Uses

Adhesive detail mesh is used for treatment of substrate sheathing joints and used for back wrapping of insulation edge at system terminations and expansion joints.

| ITEM # | ITEM NAME | WEIGHT | PACKAGING | COVERAGE |
|--------|--------------------------------------|--------|-----------|---------------------------|
| 170301 | Trim Mesh 033 39" x 150' (2.6oz.) | 3.5 kg | 39"/roll | 487 ft ² /roll |



DUREX BARRIER SEAM TAPE

03 21 21

Air/Vapour Barrier Tape System

DUREX BARRIER SEAM TAPE is a thermally set, spun-bonded polyester non-woven fabric made up of 100% continuous polyester filament fibers that are randomly arranged and reinforced with a 5 x 5 polyester scrim for added strength and stability. XP403 has high tensile and tear strength, wets out well with both cold applied cutbacks and emulsions, is non-raveling, moisture, rot and mildew resistant, is lightweight, has good sunlight resistance and possesses good elongation and recovery properties when properly applied. Compatible with oxidized asphalt and cold tar bitumen for use in hot mop system.

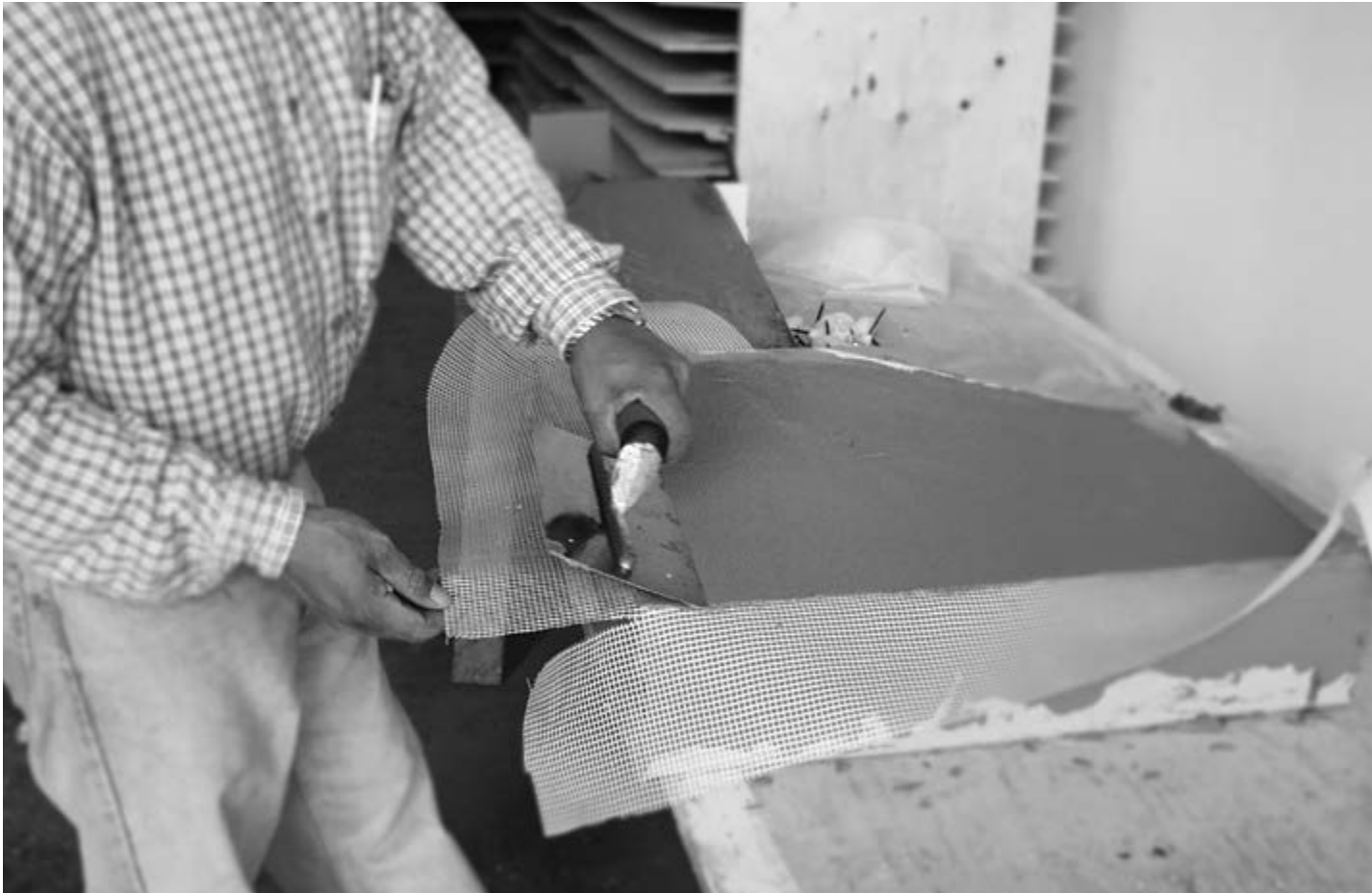
Possible Uses

Used in conjunction with our DUREX BLUESHIELD, DUREX GREEN GUARD, DUREX FLEXCRETE, DUREX MASTIC 100 and DUREX ECTOFLEX to bridge interface gaps and create continuity in the water penetration barrier within a wall assembly. DUREX BARRIER SEAM TAPE should be used to seal joints and similar substrates, joints in dissimilar substrates and wherever water infiltration may be a concern.

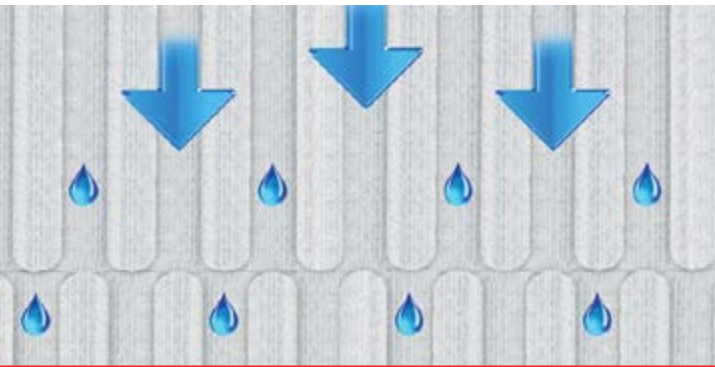
| ITEM # | ITEM NAME | PACKAGING | COVERAGE |
|--------|-------------------------|--------------|------------------|
| 180423 | DUREX Barrier Seam Tape | 160" fl/roll | 4" x 160" p/roll |



Fiberglass Reinforcement



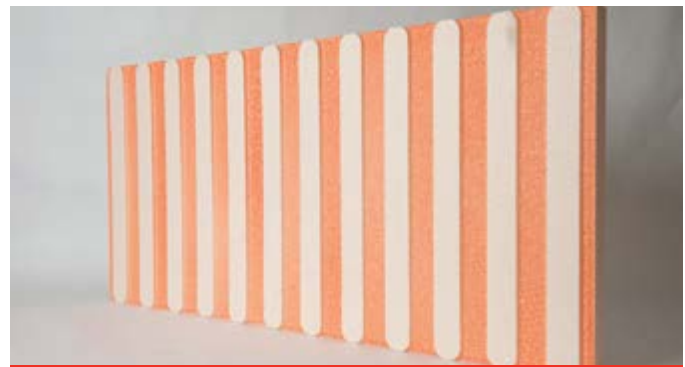
Insulation



Insulation is an integral part of the line of Durex Exterior Insulated Finishing Systems. The most common type of foam used is Type 1 Expanded Polystyrene (EPS), but there is a strong variety of insulation types available to suit your installation needs.



Durex Quantum Select



Durex Quantum 5.0

| Product | Type | Features | Remarks | Use |
|----------------------------|---------------|------------------------------------|--|--------------------------------------|
| Durex® Quantum Select EPS | Type 1 EPS | R-3.8 per Inch built into the foam | Drainage Cavity | Durex® Quantum Select EIFS System |
| | Type 2 EPS | R-4.0 per Inch | Upgraded Quantum EPS | Upgrade to Quantum Select |
| Durex® Quantum 5.0 EPS | Type 3 EPS | R-5.0 per inch @ -18 C | Quantum Select featuring High Grade EPS | Quantum 5.0 System |
| Durex® Flexlite Select EPS | Type 1 EPS | R-3.8 per inch | Drained EPS for houses and small buildings | Durex® Flexlite Select System |
| Durex® EPS | Type 1 EPS | R-3.8 per inch | Type 1 Virgin EPS | Flat Insulation EIFS Systems |
| | Type 2 EPS | R-4.0 per inch | High Grade EPS | Upgrade Flat Insulation EIFS Systems |
| | Type 3 EPS | R -5.0 per inch | High Grade EPS | Upgrade Flat Insulation EIFS Systems |
| Mineral Fiber Insulation | Rigid Crimped | R-4.2 per Inch | Non-Combustible Insulation | Durex Equalite |

Insulation

DUREX QUANTUM SELECT

Advanced Drained Cladding EPS

QUANTUM SELECT EPS features a 10mm Geometrically Defined Drainage Cavity machined into the back of the EPS Boards. QUANTUM SELECT EPS is engineered to provide drainage and accelerated drying of incidental moisture in the cavity wall while retaining maximum insulation value through the reduction of convection.

Advantages

10mm Geometrically Defined Drainage Cavity:

- 10mm drainage cavity allows for superior drainage
- Eliminates Capillary Action
- Diffuses Vapour Flow
- Meets Building Code requirements for Coastal Climates

Optimal Drainage Path:

- Gravity Induced Flow
- Accelerates drying time of drainage plane
- Provides safe distribution of moisture through wall assembly
- Adaptable moisture control strategies



| ITEM # | ITEM NAME | SIZE | PACKAGING |
|--------|---------------------------------|-----------------|-----------|
| 110601 | DUREX Quantum Select Type 1 EPS | 1.5"- 24" x 48" | PC |
| 110602 | DUREX Quantum Select Type 1 EPS | 2"- 24" x 48" | PC |
| 110603 | DUREX Quantum Select Type 1 EPS | 2.5"- 24" x 48" | PC |
| 110604 | DUREX Quantum Select Type 1 EPS | 3"- 24" x 48" | PC |
| 110605 | DUREX Quantum Select Type 1 EPS | 3.5"- 24" x 48" | PC |
| 110606 | DUREX Quantum Select Type 1 EPS | 4"- 24" x 48" | PC |
| 110607 | DUREX Quantum Select Type 1 EPS | 4.5"- 24" x 48" | PC |
| 110608 | DUREX Quantum Select Type 1 EPS | 5"- 24" x 48" | PC |
| 110609 | DUREX Quantum Select Type 1 EPS | 5.5"- 24" x 48" | PC |
| 110610 | DUREX Quantum Select Type 1 EPS | 6"- 24" x 48" | PC |

Available in Type 2 EPS on Special Order

The System Structure R-Value
 Type 1 : 3.8 per inch
 Type 2 : 4.0 per inch

The Quantum Advantage Quantum Select EPS

Drainage grooves machined into back of board provide continuous drainage of the wall cavity. Rounded design ensures no blockage. No restrictions within the cavity. Part of a fully engineered and tested assembly. Always use Durex products for entire system.

Insulation

DUREX QUANTUM 5.0



Quantum 5.0 is our premium EIFS version, which features special high density EPS rigid foam insulation made for our EIFS Wall Systems to deliver outstanding performance and exceptional value.

This innovative insulation maintains its superior thermal and mechanical properties over time – including R-Value and Moisture Resistance – providing long-term stability and protection on building exteriors for years to come; all at a more affordable price than competitive XPS (extruded polystyrene) foam products.

Properties for Optimum Performance

- Type 3 EPS - R - Value 4.3 per inch / 0.76 RSI per inch
- R-Value of 5.0 per inch / 0.88 RSI (Measured at - 18 degrees Celsius using test method ASTM STP1320)
- 40psi Compressive Strength



| ITEM # | ITEM NAME | SIZE | PACKAGING |
|--------|------------------------------|----------------|-----------|
| 110732 | DUREX Quantum 5.0 Type 3 EPS | 2" x 2' x 4' | PC |
| 110733 | DUREX Quantum 5.0 Type 3 EPS | 2.5" x 2' x 4' | PC |
| 110732 | DUREX Quantum 5.0 Type 3 EPS | 3" x 2' x 4' | PC |
| 110732 | DUREX Quantum 5.0 Type 3 EPS | 3.5" x 2' x 4' | PC |
| 110732 | DUREX Quantum 5.0 Type 3 EPS | 4" x 2' x 4' | PC |
| 110732 | DUREX Quantum 5.0 Type 3 EPS | 4.5" x 2' x 4' | PC |
| 110732 | DUREX Quantum 5.0 Type 3 EPS | 5" x 2' x 4' | PC |
| 110732 | DUREX Quantum 5.0 Type 3 EPS | 5.5" x 2' x 4' | PC |
| 110732 | DUREX Quantum 5.0 Type 3 EPS | 6" x 2' x 4' | PC |

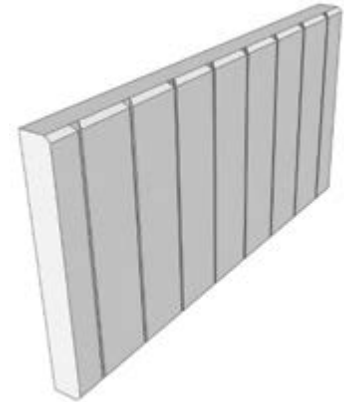
Insulation

DUREX FLEXLITE SELECT EPS

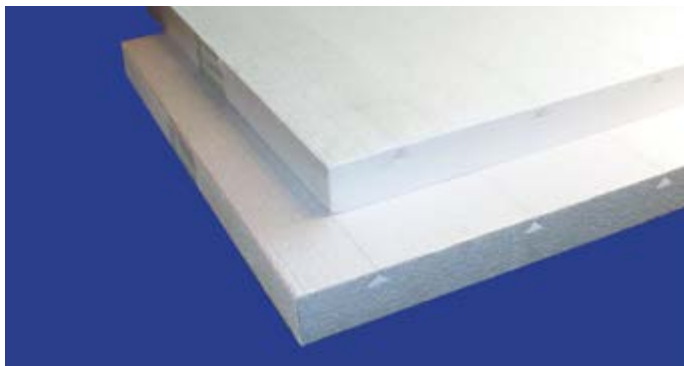
Drained EPS board for the Durex® Flexlite Select EIFS system

DUREX QUANTUM EPS is a special drained EPS board for the Durex® Flexlite Select EIFS system. It is an expanded polystyrene insulation board with factory cut channels engineered to provide drainage and drying of incidental moisture in the cavity wall. Durex® Flexlite Select EPS is designed to be used in conjunction with a standard ½" x ½" notched trowel for ease of application.

Durex® Flexlite Select EPS comes standard in Type 1 EIFS grade EPS board. Available in Type 2 and Type 3 grades for higher density and R-Values.



| ITEM # | ITEM NAME | SIZE | PACKAGING |
|--------|--------------------------|---------|-----------|
| 110811 | Flexlite Select EPS 1.5" | 2' x 4' | PC |
| 110812 | Flexlite Select EPS 2" | 2' x 4' | PC |
| 110813 | Flexlite Select EPS 2.5" | 2' x 4' | PC |
| 110814 | Flexlite Select EPS 3" | 2' x 4' | PC |
| 110815 | Flexlite Select EPS 3.5" | 2' x 4' | PC |
| 110816 | Flexlite Select EPS 4" | 2' x 4' | PC |
| 110817 | Flexlite Select EPS 4.5" | 2' x 4' | PC |
| 110818 | Flexlite Select EPS 5" | 2' x 4' | PC |
| 110819 | Flexlite Select EPS 5.5" | 2' x 4' | PC |
| 110820 | Flexlite Select EPS 6" | 2' x 4' | PC |



Insulation

TYPE 1 EPS

Standard Expanded Polystyrene

Standard Grade EIFS EPS foam. Versatile, economical and easy to use with good insulation properties. Crucially, all Durex EPS is made from Type 1 Virgin Grade Foam which makes the foam stronger as it has a tighter bead for ultimate performance. It is easier to rasp, longer lasting, more durable and more consistent than inferior grades of EPS.

- Type 1 EPS - R - Value 3.8 per inch / 0.65 RSI per inch
- Compressive Strength – 12.5 psi
Use High-Impact Mesh to increase impact resistance for EIFS Applications.
- 1 lbs. density per board foot
- Virgin, top quality grade EPS
- Heat Room Cured for greater consistency and performance



| ITEM # | ITEM NAME | SIZE |
|-----------|------------|--------------|
| 110101-50 | TYPE 1 EPS | 1/2" - 2'x4' |
| 110101-75 | TYPE 1 EPS | 3/4" - 2'x4' |
| 110102 | TYPE 1 EPS | 1" - 2'x4' |
| 110103 | TYPE 1 EPS | 1.5" - 2'x4' |
| 110104 | TYPE 1 EPS | 2" - 2'x4' |
| 110105 | TYPE 1 EPS | 2.5" - 2'x4' |
| 110106 | TYPE 1 EPS | 3" - 2'x4' |

| ITEM # | ITEM NAME | SIZE |
|--------|------------|--------------|
| 110107 | TYPE 1 EPS | 3.5" - 2'x4' |
| 110108 | TYPE 1 EPS | 4" - 2'x4' |
| 110109 | TYPE 1 EPS | 4.5" - 2'x4' |
| 110110 | TYPE 1 EPS | 5" - 2'x4' |
| 110111 | TYPE 1 EPS | 5.5" - 2'x4' |
| 110112 | TYPE 1 EPS | 6" - 2'x4' |

TYPE 2 EPS

Higher Density Expanded Polystyrene

Upgraded EPS foam for EIFS Applications. Higher Strength foam with a better R-Value than standard Type 1 EPS. Made from Virgin Grade EPS.

- Type II EPS - R - Value 4.0 per inch / 0.70 RSI per inch
- Compressive Strength – 22.4 psi
- 1.5 lbs density per board foot.
- Virgin, top quality grade EPS
- Heat Room Cured for greater consistency and performance



| ITEM # | ITEM NAME | SIZE |
|--------|-------------|--------------|
| 110502 | TYPE II EPS | 1" - 2'x4' |
| 110503 | TYPE II EPS | 1.5" - 2'x4' |
| 110504 | TYPE II EPS | 2" - 2'x4' |
| 110505 | TYPE II EPS | 2.5" - 2'x4' |
| 110506 | TYPE II EPS | 3" - 2'x4' |

| ITEM # | ITEM NAME | SIZE |
|--------|-------------|--------------|
| 110507 | TYPE II EPS | 3.5" - 2'x4' |
| 110508 | TYPE II EPS | 4" - 2'x4' |
| 110509 | TYPE II EPS | 4.5" - 2'x4' |
| 110510 | TYPE II EPS | 5" - 2'x4' |

Non Stock Item. Available as Special Order.

Insulation

TYPE 3 EPS

Advanced Expanded Polystyrene

Extra high density EPS foam for EIFS and other building applications. Achieves an R-Value of 5.0 per inch when measured at -18 degrees Celsius. Applicable for below grade applications.

Performance Properties

- Type 3 EPS - R - Value 4.3 per inch / 0.76 RSI per inch
- 37psi Compressive Strength
- R-Value of 5.0 per inch / 0.88 RSI Measured at - 18 degrees Celsius using test method ASTM STP1320



| ITEM # | ITEM NAME | SIZE | PACKAGING | ITEM # | ITEM NAME | SIZE | PACKAGING |
|--------|------------------|----------------|-----------|--------|------------------|----------------|-----------|
| 110702 | DUREX Type 3 EPS | 1" x 2' x 4' | PC | 110708 | DUREX Type 3 EPS | 4" x 2' x 4' | PC |
| 110703 | DUREX Type 3 EPS | 1.5" x 2' x 4' | PC | 110709 | DUREX Type 3 EPS | 4.5" x 2' x 4' | PC |
| 110704 | DUREX Type 3 EPS | 2" x 2' x 4' | PC | 110710 | DUREX Type 3 EPS | 5" x 2' x 4' | PC |
| 110705 | DUREX Type 3 EPS | 2.5" x 2' x 4' | PC | 110711 | DUREX Type 3 EPS | 5.5" x 2' x 4' | PC |
| 110706 | DUREX Type 3 EPS | 3" x 2' x 4' | PC | 110712 | DUREX Type 3 EPS | 6" x 2' x 4' | PC |
| 110707 | DUREX Type 3 EPS | 3.5" x 2' x 4' | PC | | | | |

Non Stock Item. Available as Special Order.

DUREX EQUALITE MINERAL FIBER INSULATION

Non-Combustible Insulation

Semi-rigid stone wool insulation board with low thermal conductivity. Used in conjunction with Durex Equality Non-Combustible EIFS Wall System.

- Fire resistant, non-combustible product
- Excellent Sound Control
- R-Value 4.2 per inch
- Actual Density - 8lb/ft³

** Large Minimum Order Quantities Apply*

| ITEM # | ITEM NAME | SIZE | PACKAGING |
|-----------|-----------------------------|------------------|-----------|
| 110400-15 | Durex Equalite Insulation * | 1.5" x 24" x 48" | PC |
| 110400-2 | Durex Equalite Insulation | 2" x 24" x 48" | PC |
| 110400-25 | Durex Equalite Insulation * | 2.5" x 24" x 48" | PC |
| 110400-3 | Durex Equalite Insulation | 3" x 24" x 48" | PC |
| 110400-35 | Durex Equalite Insulation * | 3.5" x 24" x 48" | PC |
| 110400-4 | Durex Equalite Insulation | 4" x 24" x 48" | PC |
| 110400-45 | Durex Equalite Insulation * | 4.5" x 24" x 48" | PC |
| 110400-5 | Durex Equalite Insulation * | 5" x 24" x 48" | PC |



Insulation

DUREX BOUNDARY BOARD (STARTER STRIP)

DUREX BOUNDARY BOARDS are prefabricated boards manufactured from Expanded Polystyrene (EPS) and are to be used in conjunction with all DUREX EIFS Wall Systems. This board is preback wrapped with base coat and reinforcing fiberglass mesh.

DUREX BOUNDARY BOARDS are designed to help the contractor on-site by providing quick, ready to use pieces. They are to be placed horizontally and vertically at all terminations and fenestrations. DUREX BOUNDARY BOARDS are also used in conjunction with the DUREX Quantum Select Wall System at the top of the assembly to reduce convection and increase the R-Value of the assembly.



| ITEM # | ITEM NAME | SIZE | COVERAGE |
|---------|--------------------------------|------|---------------|
| 110102S | DUREX Pre-Coated Starter Strip | 1" | 8' x 8" x 96" |
| 110103S | DUREX Pre-Coated Starter Strip | 1.5" | 8' x 8" x 96" |
| 110104S | DUREX Pre-Coated Starter Strip | 2" | 8' x 8" x 96" |
| 110105S | DUREX Pre-Coated Starter Strip | 2.5" | 8' x 8" x 96" |
| 110106S | DUREX Pre-Coated Starter Strip | 3" | 8' x 8" x 96" |
| 110107S | DUREX Pre-Coated Starter Strip | 3.5" | 8' x 8" x 96" |
| 110108S | DUREX Pre-Coated Starter Strip | 4" | 8' x 8" x 96" |
| 110109S | DUREX Pre-Coated Starter Strip | 4.5" | 8' x 8" x 96" |
| 110110S | DUREX Pre-Coated Starter Strip | 5" | 8' x 8" x 96" |
| 110111S | DUREX Pre-Coated Starter Strip | 5.5" | 8' x 8" x 96" |
| 110112S | DUREX Pre-Coated Starter Strip | 6" | 8' x 8" x 96" |

DUREX QUANTUM SELECT VENT BOARDS

DUREX QUANTUM SELECT VENT BOARDS are 8 foot long vented starter strips for positive drainage of the Quantum Select Wall Systems. The strips are for use at all bottom terminations or all areas where ventilation of the wall assembly is required. Available both Coated and Uncoated.

COATED

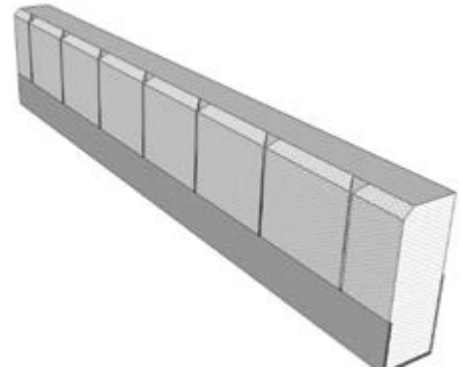
| ITEM # | ITEM NAME | SIZE | COVERAGE |
|---------|---|------|----------|
| 110601S | DUREX Quantum Select Vent Boards Pre-Coated | 1.5" | 8" x 96" |
| 110602S | DUREX Quantum Select Vent Boards Pre-Coated | 2" | 8" x 96" |
| 110603S | DUREX Quantum Select Vent Boards Pre-Coated | 2.5" | 8" x 96" |
| 110604S | DUREX Quantum Select Vent Boards Pre-Coated | 3" | 8" x 96" |
| 110605S | DUREX Quantum Select Vent Boards Pre-Coated | 3.5" | 8" x 96" |
| 110606S | DUREX Quantum Select Vent Boards Pre-Coated | 4" | 8" x 96" |
| 110607S | DUREX Quantum Select Vent Boards Pre-Coated | 4.5" | 8" x 96" |
| 110608S | DUREX Quantum Select Vent Boards Pre-Coated | 5" | 8" x 96" |
| 110609S | DUREX Quantum Select Vent Boards Pre-Coated | 5.5" | 8" x 96" |
| 110610S | DUREX Quantum Select Vent Boards Pre-Coated | 6" | 8" x 96" |



Insulation

DUREX FLEXLITE SELECT VENT BOARD

Durex Flexlite Select Vent Boards are pre-coated, 8 foot long vented starter strips engineered to facilitate positive drainage of the Durex Flexlite Select wall system. The vent boards are for use at all bottom terminations and all areas where ventilation of the wall assembly is required.



| ITEM # | ITEM NAME | SIZE | PACKAGING |
|--------|-----------------------------|-----------------|-----------|
| 110831 | Flexlite Select Vent Boards | 1.5" - 8" x 96" | PC |
| 110832 | Flexlite Select Vent Boards | 2" - 8" x 96" | PC |
| 110833 | Flexlite Select Vent Boards | 2.5" - 8" x 96" | PC |
| 110834 | Flexlite Select Vent Boards | 3" - 8" x 96" | PC |
| 110835 | Flexlite Select Vent Boards | 3.5" - 8" x 96" | PC |
| 110836 | Flexlite Select Vent Boards | 4" - 8" x 96" | PC |
| 110837 | Flexlite Select Vent Boards | 4.5" - 8" x 96" | PC |
| 110838 | Flexlite Select Vent Boards | 5" - 8" x 96" | PC |
| 110839 | Flexlite Select Vent Boards | 5.5" - 8" x 96" | PC |
| 110840 | Flexlite Select Vent Boards | 6" - 8" x 96" | PC |

Air/Moisture Barriers & Membranes

Durex Air/Moisture Barriers and Membranes are CCMC tested and approved penetration barriers for both new construction and restoration applications. Formulated using top quality materials, they are engineered to protect the building envelope against the ingress of water and prevent air leakage. Compatible with most common construction surfaces and sheathings; contact your Durabond representative for technical assistance.

| Product | Substrate | Function | Advantages |
|--------------------|--|----------------------|---|
| Durex Blueshield | Plywood/OSB, Glass Mat Coating Gypsum Board, Concrete & Masonry | Air Barrier | Single Component Versatile Air Barrier |
| Durex Green Guard | Plywood/OSB, Glass Mat Coating Gypsum Board, Concrete & Masonry | Air / Vapour Barrier | Single Component Versatile Air / Vapour Barrier |
| Durex Flexcrete | Glass Mat Coated Gypsum Board, Concrete, Masonry | Air Barrier | Cementitious Based Air Barrier Barrier with Multiple Uses |
| Durex Ectoflex | Glass Mat Coating Gypsum Board, Concrete & Masonry | Air / Vapour Barrier | Cementitious Barrier with Excellent Cold Weather Curing & Crack Bridging Properties |
| Durex-A-Mastic 100 | Plywood/OSB, Glass Mat Coating Gypsum Board | Air Barrier | Single Component Air Barrier with Higher Water Vapour Transmission Rate |
| Flex-Seal | Plywood/OSB, Glass Mat Coating Gypsum Board, Concrete, Masonry | Air / Vapour Barrier | Impermeable Self-Sealing Sheet Membrane with Nail Sealability |
| Flex-Seal VP | Plywood/OSB, Glass Mat Coating Gypsum Board, Concrete, Masonry | Air Barrier | Breathable Sheet Membrane with Nail Sealability. No primer required. |



Air/Moisture Barriers & Membranes

DUREX DUR-A-MASTIC 100

07 25 00

Water-Based Acrylic WRB & Insulation Adhesive

DUREX DUR-A-MASTIC 100 is a water based acrylic adhesive. It is an exterior type compound, ready mixed, single component product. Its primary use is as an air/water resistant barrier (WRB). It is also used as an adhesive to bond expanded polystyrene insulation to wood substrates. When used as a WRB, it meets the requirements for moisture-sensitive substrates as well as Class 3 for air barrier membrane. It is applied by trowel and it cures to form a tough, seamless elastomeric membrane, which is resistant to air leakage and water ingress under hydrostaic pressure.

Possible Uses

DUREX DUR-A-MASTIC 100 is used as an air barrier within the building envelope and as a seamless WRB membrane. It may be applied to most common surfaces and integrated into various wall systems in both new construction and restoration.

| ITEM # | ITEM NAME | PACKAGING | UNITS/PALLET | COVERAGE |
|--------|------------------------|-------------|-----------------|---|
| 010602 | DUREX Dur-A-Mastic 100 | 18.9 L/pail | 48 pails/pallet | 200-220 ft ² / pail (Air Barrier/WPB) |
| | | | | 175-200 ft ² / pail (Adhesive) |



DUREX BLUE SHIELD

07 25 00

Flexible Latex Copolymer Air Barrier and Waterproofing Membrane

DUREX BLUE SHIELD is a single component, liquid applied, water-based copolymer rubber air barrier and water penetration barrier. Applied by roller, trowel or spray equipment, it cures to form a tough seamless, elastomeric membrane, which is resistant to air leakage and water ingress under hydrostatic pressure. In its liquid state, DUREX BLUE SHIELD is light blue in colour and cures to a translucent dark blue colour.

Possible Uses

DUREX BLUE SHIELD is used as an air barrier within the building envelope and as a seamless water penetration barrier. It may be applied to most common surfaces and integrated into various wall systems in both new construction and restoration; is a Class 3 Air Barrier and a water penetration barrier at a maximum wet or dry film thickness of 0.39mm.

| ITEM # | ITEM NAME | PACKAGING | UNITS/PALLET | COVERAGE |
|--------|-------------------|-------------|-----------------|--|
| 180403 | DUREX Blue Shield | 18.9 L/pail | 48 pails/pallet | 200-300 ft ² /pail (WPB/Air Barrier) |



Air/Moisture Barriers & Membranes

DUREX FLEXCRETE

07 25 00

Flexible Polymer-based Cementitious Air Barrier

DUREX FLEXCRETE is a two component polymer based mortar consisting of a water based acrylic liquid component Flexcrete, mixed with the dry component Flexcrete “B.” DUREX FLEXCRETE mix has been developed to utilize advanced polymer technology to combine the strength and toughness of polymer modified cement with the flexibility of synthetics.

Possible Uses

DUREX FLEXCRETE is used as a Class 3 Air Barrier when applied at a minimum thickness of 1.5 mm (1/16”).

| ITEM # | ITEM NAME | PACKAGING | UNITS/PALLET | COVERAGE |
|---------|-------------------------|-------------|----------------|--|
| 010300 | DUREX Flexcrete (Pail) | 30 kg/bag | 48 bags/pallet | 100-120 ft ² /pail (Air Barrier) |
| 010300B | DUREX Flexcrete B (Bag) | 22.7 kg/bag | 63 bags/pallet | 100-120 ft ² /pail (Base Coat) |
| | | | | 175-200 ft ² /pail (Adhesive) |



DUREX GREEN GUARD PLUS

07 25 00

Flexible Latex Copolymer Air/Vapour Barrier Membrane

DUREX GREEN GUARD PLUS is a single component, liquid applied, water-based copolymer rubber air/vapour barrier. Trowel or spray applied, it cures to form a tough, seamless, elastomeric membrane, which is resistant to air leakage and vapour transmission. In its liquid state, it is light green in colour and cures to a translucent forest green colour.

Possible Uses

DUREX GREEN GUARD PLUS acts as an air/vapour barrier within the building envelope. It may be applied to most common surfaces and integrated into various wall-systems in both new construction and restoration. DUREX GREEN GUARD PLUS can also be used as an adhesive for expanded polystyrene insulation; is a Class 3 Air Barrier and a Type I vapour barrier at a minimum dry film thickness of 1.15mm (45 mil).

| ITEM # | ITEM NAME | PACKAGING | UNITS/PALLET | COVERAGE |
|--------|-------------------|-------------|-----------------|--|
| 180402 | DUREX Green Guard | 18.9 L/pail | 48 pails/pallet | 150-200 ft ² /pail (WPB/Air Barrier) |



Air/Moisture Barriers & Membranes

DUREX ECTOFLEX

07 25 00

Flexible Polymer Based Cementitious Waterproofing & Air/Vapour Barrier

DUREX ECTOFLEX is a two component, flexible, polymer based cementitious coating designed to prevent moisture ingress under hydrostatic pressure as well as air leakage and vapour diffusion. It is light grey in colour when fully cured.

Possible Uses

It is used as a waterproofing membrane designed to provide moisture protection in a variety of both vertical and horizontal applications, including foundation walls, tunnels and other earth sheltered structures, plaza decks, mud slabs and other spilt slab construction, wet rooms and balconies.



| ITEM # | ITEM NAME | PACKAGING | UNITS/PALLET |
|---------|--------------------------|-------------|----------------|
| 180411A | EctoFLEX (PART A LIQUID) | 10 L/pail | - |
| 180411 | EctoFLEX (PART B DRY) | 22.7 kg/bag | 63 bags/pallet |

DUREX BARRIER SEAM TAPE

03 21 21

Air/Vapour Barrier Tape System

DUREX BARRIER SEAM TAPE is a thermally set, spun-bonded polyester non-woven fabric made up of 100% continuous polyester filament fibers that are randomly arranged and reinforced with a 5 x 5 polyester scrim for added strength and stability. XP403 has high tensile and tear strength, wets out well with both cold applied cutbacks and emulsions, is non-raveling, moisture, rot and mildew resistant, is lightweight, has good sunlight resistance and possesses good elongation and recovery properties when properly applied. Compatible with oxidized asphalt and cold tar bitumen for use in hot mop system.

Possible Uses

Used in conjunction with our DUREX BLUESHIELD, DUREX GREEN GUARD, DUREX FLEXCRETE, DUREX MASTIC 100 and DUREX ECTOFLEX to bridge interface gaps and create continuity in the water penetration barrier within a wall assembly. DUREX BARRIER SEAM TAPE should be used to seal joints and similar substrates, joints in dissimilar substrates and wherever water infiltration may be a concern.



| ITEM # | ITEM NAME | PACKAGING | COVERAGE |
|--------|-------------------------|--------------|------------------|
| 180423 | DUREX Barrier Seam Tape | 160" fl/roll | 4" x 160" p/roll |

Air/Moisture Barriers & Membranes

DUREX FLEX SEAL

07 25 00

Composite Sheet Air/Vapour Barrier Membrane

FLEX SEAL Air Vapour Barrier is a self-adhering, self-sealing, cold applied composite sheet membrane comprised of 0.9 mm (36 mils) of rubberized asphalt integrally bonded to a 0.1 mm (4 mils) film of high density, cross laminated polyethylene for a minimum thickness of 1.0 mm (40 mils). For ease of application FLEX SEAL Air Vapour Barrier is intertwined with a disposable silicone treated release paper. FLEX SEAL Air Vapour Barrier is dark grey to black in colour.

Possible Uses

FLEX SEAL Air Vapour Barrier is an air seal membrane designed to prevent the passage of air into or out of the building enclosures when incorporated with building envelope construction.



| ITEM # | ITEM NAME | PACKAGING | COVERAGE |
|--------|-----------------------|--------------|---------------------------|
| 180300 | Flexseal 36" Membrane | 83.3 lf/roll | 250 ft ² /roll |
| 180301 | Flexseal 18" Membrane | 83.3 lf/roll | 125 ft ² /roll |

DUREX FLEX-SEAL VP

07 25 00

Self-Adhesive Air/Vapour Barrier Membrane

DUREX® FLEX-SEAL VP is a Self-adhesive vapour permeable and air barrier membrane with a tri-laminated polypropylene facer used on walls. It can also be used as a through-wall flashing membrane and transition membrane. The self-adhesive underface is covered with a silicone release film.

Possible Uses

FLEX SEAL Air Vapour Barrier is an air seal membrane designed to prevent the passage of air into or out of the building enclosures when incorporated with building envelope construction.

| ITEM # | ITEM NAME | PACKAGING | COVERAGE |
|--------|--------------------------|------------|---------------------------|
| 180320 | Flexseal VP 98' Membrane | 98 lf/roll | 306 ft ² /roll |



Transition & Interfacing Membranes

DUREX PRIMERLESS EIFS TAPE

07 24 00

Primerless Polyester Topped Transition Membrane

Durex® Primerless EIFS Tape is a high performance tape designed for use with Stucco and EIFS systems to seal around penetrations and at sheathing joints and window / door flanges. Durex® Primerless EIFS Tape can be applied to most substrates without the use of primer. The polyester fabric top layer provides an excellent bonding surface for cementitious and acrylic EIFS/stucco coatings.



Possible Uses

Durex® Primerless EIFS Tape is used as a sealing tape for sheathing joints and around penetrations in Stucco and EIFS systems. Safe for use on all window and door flanges and most commonly used construction substrates.

| ITEM # | ITEM NAME | PACKAGING |
|--------|--------------------------------|---------------|
| 180701 | PRIMERLESS EIFS TAPE 2.0 - 4" | 75 ln.ft/roll |
| 180702 | PRIMERLESS EIFS TAPE 2.0 - 6" | 75 ln.ft/roll |
| 180703 | PRIMERLESS EIFS TAPE 2.0 - 9" | 75 ln.ft/roll |
| 180704 | PRIMERLESS EIFS TAPE 2.0 - 12" | 75 ln.ft/roll |

DUREX EIFS TAPE

07 24 00

Polyester Topped Rubberized Transition Membrane

DUREX EIFS Tape is a rubber based, air and moisture barrier for vertical and horizontal EIFS/ Stucco systems. EIFS Tape is a 30mm SBS modified rubberized asphalt membrane with a polyester top surface to facilitate adhesion of a trowel applied moisture barrier or base coat applied directly to the surface. The EIFS Tape can be applied over gypsum board, wood, metal, styrene and polyethylene surfaces to form an air and vapour barrier in the EIFS/Stucco system.



Possible Uses

Sealing window and door openings, joints in the insulation or gypsum board and wherever water infiltration may be a concern. It is an integral part of the DUREX Moisture Managed EIF Systems.

- Secondary weather barrier tape with fiber weave
- Recommended use with a house wrap
- 30 mm thick composite membrane
- Prevents splash-back
- Self-adhesive
- 4", 6", 9", or 12" x 10'/roll
- Should be used around windows, doors, or any structural opening

| ITEM # | ITEM NAME | PACKAGING | COVERAGE |
|--------|-------------------------------|-----------------|-------------|
| 180601 | EIFS Tape Transition Membrane | 4" x 100" roll | 100 lf/roll |
| 180602 | EIFS Tape Transition Membrane | 6" x 100" roll | 100 lf/roll |
| 180603 | EIFS Tape Transition Membrane | 9" x 100" roll | 100 lf/roll |
| 180604 | EIFS Tape Transition Membrane | 12" x 100" roll | 100 lf/roll |

Transition & Interfacing Membranes

DUREX FLEX-SEAL MASTIC

07 24 00

Rubberized Asphalt Mastic

A pre-mixed, single component, rubberized asphalt-based mastic, specially blended for use with Durex Flex-Seal Membranes.

Possible Uses

FLEX-SEAL MASTIC is formulated to provide extra protection to installed waterproofing and air/vapour membrane edges, especially field edges where there is an absence of the factory edge bead of rubberized asphalt.



| ITEM # | ITEM NAME | PACKAGING | COVERAGE |
|--------|-----------------------|-------------|------------------------------|
| 180303 | Flex-Seal Mastic | 10 L/pail | 75–100 ft ² /pail |
| 180304 | Flex-Seal Mastic Tube | 850 mL/tube | 40–60 lf/tube |

DUREX FLEX-SEAL WALL FLASHING TAPE

07 24 00

Self-Adhesive Wall Flashing

FLEX-SEAL WALL FLASHING is a self-adhering, self-sealing, cold applied composite sheet membrane comprised of 0.8 mm (32 mils) rubberized asphalt integrally bonded to a 0.2 mm (8 mils) film of high density, crosslaminated polyethylene for a minimum thickness of 1.0 mm (40 mils). For ease of application FLEX-SEAL WALL FLASHING is intertwined with a disposable silicone treated release paper. FLEX-SEAL WALL FLASHING is dark grey to black in colour.

Possible Uses

An integral component of cavity wall and EIFS wall design, FLEX-SEAL WALL FLASHING is designed to collect and direct any water within the cavity to the exterior of the building enclosure. Fully bonded to the exterior face of the inner with FLEX-SEAL WALL FLASHING prevents accumulated cavity water from seeping back into the structure. Installation of FLEXSEAL WALL FLASHING should be considered at the base of all cavity walls, wall sections and at the head location of all wall openings. It is suitable for use in a variety of building assemblies and combination with most common construction materials, including concrete, masonry, metal, wood and gypsum sheathing.



| ITEM # | ITEM NAME | PACKAGING | COVERAGE |
|---------|-----------------------------|--------------|--------------|
| 180301A | Flex-Seal 6" Flashing Tape | 83.3 lf/roll | 83.3 lf/roll |
| 180301B | Flex-Seal 9" Flashing Tape | 83.3 lf/roll | 83.3 lf/roll |
| 180301C | Flex-Seal 12" Flashing Tape | 83.3 lf/roll | 83.3 lf/roll |

Transition & Interfacing Membranes

DUREX FLEX-SEAL RED PRIMER

07 24 00

Synthetic Rubber Based Primer

FLEX-SEAL RED PRIMER is a fast drying, rubber based, resin cutback primer specially formulated to provide good initial adhesion, and more importantly, excellent permanent adhesion of Flex-Seal Air Vapour Barrier Membranes, it is red in colour and remains “tacky” after drying.

Possible Uses

FLEX-SEAL RED PRIMER is designed to treat all substrates prior to installation of Flex-Seal Air Vapour Barrier Membranes and is suitable for use over most common construction materials, including; masonry, concrete, wood, metal and gypsum sheathing.

Note that FLEX-SEAL RED PRIMER is intended for exterior use only. For information on applications of FLEX-SEAL Air Vapour Barrier Membranes, please consult your Durabond representative.



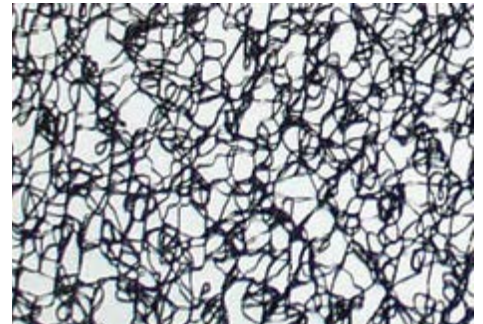
| ITEM # | ITEM NAME | PACKAGING | UNITS/PALLET | COVERAGE |
|---------|----------------------|-----------|----------------|---------------------------------|
| 180307 | Flex-Seal Red Primer | 20 L/pail | 48 pail/pallet | 1500–2000 ft ² /pail |
| 180307G | Flex-Seal Red Gallon | 4 L/pail | | - |

EIFS Components & Accessories

DUREX DRAINAGE MAT

DUREX DRAINAGE MAT is a plastic, dimpled, high build mat designed to create an air space (or gap) between the insulation and the substrate. It is recommended for mechanically fastened EIFS and is part of the DUREX Flexlite Select MF system. Limited to residential construction. Available in large rolls in thicknesses ranging from 4 mm to 10 mm.

| ITEM # | ITEM NAME | PACKAGING | COVERAGE |
|--------|----------------------------------|-----------|---------------------------|
| 180501 | DUREX Drainage Mat (4 mm thick) | 48" roll | 810 ft ² /roll |
| 180504 | DUREX Drainage Mat (10 mm thick) | 8" roll | 648 ft ² /roll |



DUREX DRAINAGE VENT

The DUREX DRAINAGE VENT is a pre-fabricated corrugated plastic sheet designed to facilitate drainage at the termination points of all DUREX EIFS Wall Assemblies and to prevent the ingress of unwanted insects. Available in 4 mm for all "Flat Board" EIFS as well as 8 mm for use in conjunction with QUANTUM SELECT VENT BOARDS.

| ITEM # | ITEM NAME | WEIGHT | COVERAGE |
|--------|------------------------------|---------|--------------------------------------|
| 180510 | Drainage Vent (2 mm x 50 mm) | 1.2m/pc | 2 mm thick x 50 mm wide x 1.2 m long |
| 180513 | Drainage Vent (8 mm x 50 mm) | 1.2m/pc | 8 mm thick x 50 mm wide x 1.2 m long |



Drainage vent strip



EIFS Components & Accessories

DUREX DRAINAGE TRACK

Universal drainage track is an optional drainage track that is installed at the bottom of a Durex EIFS system. One-size fits all. Unique design allows for use with any size of insulation.

| ITEM # | ITEM NAME | PACKAGING |
|--------|--------------------------------|-----------|
| 180521 | DUREX Universal Drainage Track | 8 LF |



DUREX UNI-FLASH DRAINAGE TRACK

Plastic Drainage Track specifically designed for Quantum Select to allow for drainage of incidental moisture within the wall assembly. Available in 1.5" and 2".

Application

Place at the base of wall (above grade level minimum).

| ITEM # | ITEM NAME | PACKAGING |
|--------|---|-----------|
| 180522 | DUREX Uni-Flash Drainage Track - 1.5" (8' long) | PC |
| 180523 | DUREX Uni-Flash Drainage Track - 2" (8' long) | PC |



KICK-OUT FLASHING

KICK-OUT FLASHING is essential for use on critical roof and flashing details. Divert water away from any Durex Wall System by using KICK-OUT FLASHING. Available in both left and right.

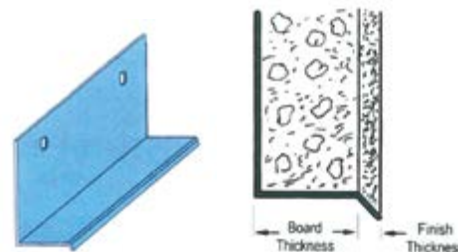
| ITEM # | ITEM NAME |
|---------|---------------------------------|
| 180601L | DUREX Kick-Out Flashing (Left) |
| 180601R | DUREX Kick-Out Flashing (Right) |



WINDOW DRIPS

WINDOW & DOOR DRIP: Edge is used to provide added protection for system edges at the top of windows and doors. This product has a drip edge which helps direct water away from the building. A two-inch rear flange is provided.

| ITEM # | ITEM NAME | UNITS |
|--------|---------------------------------|-------|
| 160801 | P. Window Drip 1" WDE100-16 | PC |
| 160802 | P. Window Drip 1-1/2" WDE100-16 | PC |
| 160803 | P. Window Drip 2" WDE200-16 | PC |



EIFS Components & Accessories

STARTER STRIP EIFS DRAINAGE

The DUREX DRAINAGE VENT is a pre-fabricated corrugated plastic sheet designed to facilitate drainage at the termination points of all DUREX EIFS Wall Assemblies and to prevent the ingress of unwanted insects. Available in 4 mm for all "Flat Board" EIFS as well as 8 mm for use in conjunction with QUANTUM SELECT VENT BOARDS.

EIFS STARTER TRACK/CASING

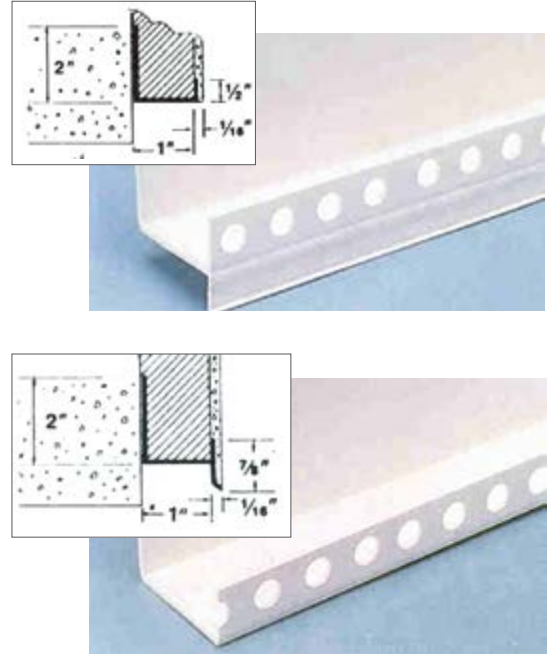
(Without Drip Edge & Drainage Holes) can be installed at the bottom of the wall as a starter rack, but is usually installed around the perimeter of the wall as a casing to protect the edge of the foam board and finish from damage and the elements. This product does not have a drip edge. Ridges and perforations on the face of this bead aid in finish adhesion. Excellent adhesion of EIFS finishes and paint can be expected with all AMICO Vinyl EIFS beads.

ANGLED STARTER TRACK/CASING

(With Drip Edge & Drainage Holes) are typically installed at the bottom of the wall as a starter track to protect the bottom edge of the foam board and finish from damage and the elements. Ridges and perforations on the face of this bead aid in finish adhesion. The angled channel help funnel accumulated moisture to the drainage openings in the track which allows this moisture to exit.

EIFS STARTER STRIP

(With Drip Edge) is used to provide a shelf or edge support for foam board and EIFS finish. This bead often allows the installer to dispense with the necessity to back wrap and finish the bottom edge of the board (check with EIFS manufacturers to assure that this complies with their system). The bottom leg and lip serves as a drip edge to funnel moisture away from the wall or foundation. This bead is usually installed at the bottom of framed walls. Excellent adhesion of EIFS finishes and paint can be expected with all vinyl EIFS beads.



| ITEM # | ITEM NAME | UNITS |
|---------|-------------------------------------|-------|
| 1160600 | P/C 1" Starter Track 10' | PC |
| 160601 | P/C 1-1/2" Starter Track 10' | PC |
| 160601A | P. Starter Strip 2" St-1500 10' | PC |
| 160602 | P/C 2" Starter Track 10' | PC |
| 160603 | Universal Starter Track 8' | PC |
| 160610 | P/C 1-3/4" Vented Screen Track 10' | PC |
| 160611 | P/C 2-1/4" Vented Screen Track 10' | PC |
| 160620 | P/C 1-3/4" Improved Drip Track 10' | PC |
| 160621 | P/C 2-1/4" Improved Drip Track 10' | PC |
| 160622 | P/C 2" Starter Trac W/Drip Edge 10' | PC |

Stucco & Direct Applied Basecoats & Plasters

| INSULATION ADHESIVES | | | | |
|----------------------|---|------------------------------------|-------------------------|--|
| Product | Mixed With | Mixing Ratio | Coverage | Features |
| Uniplast | Acrylic Resin Bond | 1 bag: 5 Lts Acrylic Resin Bond | 75-100 ft ² | Ideal for fine parging on masonry, concrete & cement board substrates |
| Dryplast | Water | 1 bag: 4-5 Lts of Water | 50-75 ft ² | Economical High-build parge coat for Blocks, Masonry & Concrete substrates |
| Flexcrete | Flexcrete "B" | 1 Pail: 1 Bag | 100-120 ft ² | High flexibility, Low Temperature tolerance, Thin Build. Can be mixed with Portland Cement |
| Acrybond Concentrate | Portland Cement, Masonry Cement, Plaster Sand Water | Refer to Mixing Chart | Refer to Mixing Chart | Economical Plaster Basecoat |

DUREX DRYPLAST

09 24 00

Fiber Reinforced Cement Plaster Mix

DUREX DRYPLAST is a glass fiber reinforced mixture of Portland cement and plaster, formulated with a variety of ideal features to facilitate and simplify its application.

Possible Uses

DUREX DRYPLAST Medium grade can be used as the scratch and base coats for Durex Lite Coat and Durex Stucco Lite Systems.



| ITEM # | ITEM NAME | PACKAGING | UNITS/PALLET | COVERAGE |
|---------|---------------------------|-------------|----------------|-------------------------------|
| 010341 | DUREX Dryplast Coarse | 22.7 kg/bag | 63 bags/pallet | 25-40 ft ² /bag |
| 010343 | DUREX Dryplast Medium | 22.7 kg/bag | 63 bags/pallet | 50-75 ft ² /bag |
| 010344 | DUREX Dryplast Fine | 22.7 kg/bag | 63 bags/pallet | 120 -150 ft ² /bag |
| 010344W | DUREX Dryplast White Fine | 22.7 kg/bag | 63 bags/pallet | 100-120 ft ² /bag |

Stucco & Direct Applied Basecoats & Plasters

DUREX UNIPLAST & ACRYLIC RESIN BOND

09 24 00 / 03 05 00

Cement Based Plaster Mix

DUREX UNIPLAST is a cement based plaster mix available in fine, medium and coarse grades. It incorporates a well-balanced blend of selected aggregates and fillers perfectly formulated to provide ideal physical properties and excellent workability features. It is a versatile product which can be used in several of the Durex Wall Systems as both scratch and base coats. It can also be used for concrete wall repair work and as a quality parging coat over masonry and concrete.

DUREX UNIPLAST is rated non-combustible, complying with the National Building Code as a material to protect foamed plastic insulation for exterior applications. It is ready to use by being mixed with DUREX ACRYLIC RESIN BOND additive. It has low shrinkage, resulting in minimum cracking. Available in white and grey colours.

Possible Uses

DUREX UNIPLAST is a versatile product which can be used in several of the Durex Wall Systems as both scratch and as base coats. It can also be used for concrete wall repair work and as a quality parging coat over masonry and concrete.

**DUREX ACRYLIC RESIN BOND**

100% Acrylic Polymer Cement Modifier

DUREX ACRYLIC RESIN BOND is a water based, 100% acrylic polymer cement additive. DUREX ACRYLIC RESIN BOND has been specially formulated to provide maximum adhesion and ideal application properties when used as a versatile general purpose latex additive to Portland cement-based plasters and repair mortars.

Possible Uses

DUREX ACRYLIC RESIN BOND when mixed with DUREX UNIPLAST is used for concrete wall and floor patching for shallow and deep repairs, in maximum lifts of 6.4 mm (1/4") DUREX ACRYLIC RESIN BOND can be used as a general purpose latex additive in providing a latex/cement slurry bonding mix, a sand/Portland cement repair mortar, and a parging mix.

| ITEM # | ITEM NAME | PACKAGING | UNITS/PALLET | COVERAGE |
|--------|------------------------------|-------------|----------------|----------------------------|
| 010301 | DUREX Uniplast Grey Fine | 22.7 kg/bag | 63 bags/pallet | 60-75 ft ² /bag |
| 010302 | DUREX Uniplast Grey Medium | 22.7 kg/bag | 63 bags/pallet | 50 ft ² /bag |
| 010303 | DUREX Uniplast Grey Coarse | 22.7 kg/bag | 63 bags/pallet | 40 ft ² /bag |
| 010321 | DUREX Uniplast White* Fine | 22.7 kg/bag | 63 bags/pallet | 65-75 ft ² /bag |
| 010322 | DUREX Uniplast White* Medium | 22.7 kg/bag | 63 bags/pallet | 50 ft ² /bag |
| 010323 | DUREX Uniplast White* Coarse | 22.7 kg/bag | 63 bags/pallet | 25 ft ² /bag |

*Please use discretion when using Uniplast White. Contact Durabond with any inquiries.

Mixed with:

| ITEM # | ITEM NAME | PACKAGING | UNITS/PALLET | COVERAGE |
|--------|-----------------------------|-----------|----------------|------------------|
| 010206 | Acrylic Resin Bond (Gallon) | 4 L/jug | 4 gal/box | Refer to dry mix |
| 010207 | Acrylic Resin Bond (Pail) | 20 L/pail | 4 pails/pallet | Refer to dry mix |



Stucco & Direct Applied Basecoats & Plasters

DUREX FLEXCRETE

07 25 00

Flexible Polymer-based Cementitious Mortar

DUREX FLEXCRETE is a two component polymer based mortar consisting of a water based acrylic liquid component Flexcrete, mixed with the dry component Flexcrete “B.” DUREX FLEXCRETE mix has been developed to utilize advanced polymer technology to combine the strength and toughness of polymer modified cement with the flexibility of synthetics.

Possible Uses

DUREX FLEXCRETE mix can be used as the base in “Durex Pool Coat”, “Durex Stucco Lite Soffit” and “Durex Flexlite” system applications. It is the best available cementitious joint treatment and base coat for cement board substrates. DUREX FLEXCRETE is also used as the insulation adhesive base coat lamina for “Durex-Flexlite.” It is a Class 3 Air Barrier when applied at a minimum thickness of 1.5 mm (1/16”),



| ITEM # | ITEM NAME | PACKAGING | UNITS/PALLET | COVERAGE |
|---------|-------------------------|-------------|----------------|---|
| 010300 | DUREX Flexcrete (Pail) | 30 kg/bag | 48 bags/pallet | 100-120 ft ² /pail (Air Barrier) |
| 010300B | DUREX Flexcrete B (Bag) | 22.7 kg/bag | 63 bags/pallet | 100-120 ft ² /pail (Base Coat) 175-200 ft ² /pail (Adhesive) |

Stucco & Direct Applied Accessories

PERMABASE CEMENT BOARD

06 16 00

PermaBase® BRAND Cement Board is a rigid substrate made of Portland cement, aggregate and glass mesh that provides an exceptionally hard, durable surface that is able to withstand prolonged exposure to moisture.

- Long wrapped, tapered, smooth and shatter proof edges are formed using the patented reinforced EdgeTech® technology.
- Highly moisture resistant, will not rot, disintegrate or swell when exposed to water
- Can be used in both interior and exterior applications
- Impact resistant with excellent overall flexural, compressive, and tensile strength characteristics
- Cut to size utilizing a utility knife and straight edge

Possible Uses

The highly ductile board will absorb 30Mpa of energy in bending. This unique material offers many possibilities for civil engineering and architectural applications.



| ITEM # | ITEM NAME | PACKAGING | COVERAGE |
|--------|-----------------------------|--------------------|------------------------|
| 110304 | Cement Board 4' x 8' x 1/2" | 4' x 8' x 1/2" pcs | 32 ft ² /pc |
| 110305 | Cement Board 4' x 8' x 3/8" | 4' x 8' x 3/8" pcs | 32 ft ² /pc |

DENS GLASS GOLD

06 16 00

DensGlass Gold Exterior Wall Sheathing features faces made of fiberglass and a core made of moisture-resistant material, making it a durable and long-lasting sheathing and sub-layer for exterior materials. The sheathing is lightweight and installs easily with standard drywall tools.

| ITEM # | ITEM NAME | PACKAGING | COVERAGE |
|--------|----------------------|---------------|---------------------------|
| 110310 | DENS GLASS GOLD 1/2" | 4' x 8' Sheet | 32 ft ² /sheet |
| 110311 | DENS GLASS GOLD 5/8" | 4' x 8' Sheet | 32 ft ² /sheet |



STUCCO & STONE VENEER DRAINAGE MAT

09 24 00

SLICKER MAX is a vertically channeled rainscreen that has been specifically designed for use with manufactured stone, natural stone, stucco, and masonry applications. Each roll contains the patented Home Slicker three-dimensional matrix bonded to a fabric which prevents mortar from entering the wall cavity during cladding installation. Available in 6 mm or 10 mm thicknesses.

| ITEM # | ITEM NAME | PACKAGING | COVERAGE |
|--------|-------------------------------------|-----------|---------------------------|
| 180508 | Benjamin Obdyke Slicker Max - 6 mm | 48" roll | 200 ft ² /roll |
| 180509 | Benjamin Obdyke Slicker Max - 10 mm | 48" roll | 125 ft ² /roll |



Stucco & Direct Applied Accessories

MESH LATH / RIB LATH

09 24 00

DIAMOND MESH LATH

Manufactured from prime quality steel sheets which are slit and expanded to form small openings (approximately 13,000 per square yard). The large number of openings provide more plaster keys for better stucco bonding. Each sheet has square ends and smooth parallel edges, is easy to handle, fast to erect, and can be bent readily for curved surfaces.

SELF-FURRED DIAMOND MESH LATH

This lath is used extensively in exterior stucco work over sheathing and as a plaster base over masonry walls. Self-furring dimples hold the lath approximately 1/4 inch away from solid surfaces to aid in the keying of stucco to the lath. Paper-backed self-furred lath is furred with longitudinally embossed “V” grooves or ribs to facilitate fastening of the paper backing.

1/8” RIB LATH (FLAT RIB)

This lath has eighteen ribs approximately 1/8 inch high, spaced 1-1/2 inches on center to provide additional rigidity for horizontal applications. There are 11,500 openings or keys which provide ample keying for either trowelled on or machine applied stucco. This product is also used extensively as a base for ceramic tile. 3.4 lb. may be used for horizontal spans up to 19” o.c. and 2.75 lb. May be used for horizontal spans up to 16” o.c. when installation follows ASTM C1063.

3/8” RIB LATH (HIGH RIB)

This lath has seven longitudinal ribs, each 3/8 inch deep and eight small flat ribs to provide additional rigidity for horizontal applications, while the herringbone mesh placed between each rib provides exceptional bonding of the stucco to the lath. The 1/8” flat ribs at the outer edge of the sheet permits sheets to be lapped smoothly, reducing plaster cracks at the laps and aiding in keying at these critical locations. This lath is ideal for horizontal applications such as soffits and open spans up to 24” o.c.



Mesh Lath



Rib Lath

| ITEM # | ITEM NAME | PACKAGING | UNITS/PALLET |
|---------|-----------------------------|-----------|--------------|
| 150602 | Galv Metal Lath #2.5 Reg. | 22.7 kg | 10 PC/BUNDLE |
| 150602A | Galv Metal Lath #2.5 Reg. | 2.27 kg | EACH |
| 150607 | Galv Metal Lat. #3.4 | 29.55 kg | 10 PC/BUNDLE |
| 150608 | 2.5 Self Furring Metal Lath | - | 10 PC/BUNDLE |
| 150611 | Galv Rib Lath #3.4 1/8” | 29.55 kg | 10 PC/BUNDLE |
| 150612 | Galv Rib Lath #3.4 3/8” | 29.55 kg | 10 PC/BUNDLE |

Stucco & Direct Applied Accessories

METAL CORNER BEAD

09 24 00

X-1 CORNER BEAD

Standard accessory for providing exterior corner protection and providing a reliably straight ground for screening. 3" expanded mesh wings are easily flexed to adapt to framing irregularities and to match screed heights. Furnished in galvanized steel or zinc alloy. Galvanized weight, 185 lbs. per 1000 lin. ft. Zinc weight, 160 lbs. per 1000 lin. ft. pieces.



X-1 Corner Bead

| ITEM # | ITEM NAME | SIZE | UNIT |
|--------|----------------------|------|------|
| 150201 | Metal Corner Bead X1 | 10' | PC |

METAL EXPANSION JOINTS

09 24 00

X-66 EXPANSION JOINT

EXPANSION JOINT: Expansion joints provide for basic expansion and contraction movement in the plaster membrane. Available in galvanized steel or zinc alloy. In 10 Ft. lengths, 24 Pieces per ctn., 240 feet per ctn.



"M" Joint

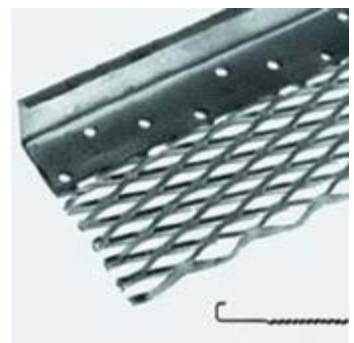
| ITEM # | ITEM NAME | PACKAGING | COVERAGE |
|--------|-----------------------|------------|----------|
| 150301 | Metal Expansion Joint | 3/8" x 10' | PC |
| 150302 | Metal Expansion Joint | 1/2" x 10' | PC |
| 150303 | Metal Expansion Joint | 3/4" x 10' | PC |

METAL PLASTER STOP / CASING BEAD

09 24 00

X-66 METAL PLASTER STOP

Used to effectively terminate plaster edge and/or to separate stucco from all other structural membranes at doors, windows and other openings; also when plaster/stucco meets dissimilar material. Expanded flange provides excellent stucco embedment at the junctions of the bead and metal lath.



X-66 Metal Plaster Stops

| ITEM # | ITEM NAME | PACKAGING | COVERAGE |
|--------|--------------------------|-----------|----------|
| 150111 | M. PLASTER STOP X66 3/8" | 10' | PC |
| 150112 | M. PLASTER STOP X66 1/2" | 10' | PC |
| 150113 | M. PLASTER STOP X66 3/4" | 10' | PC |
| 150114 | M. PLASTER STOP X66 1" | 10' | PC |

Stucco & Direct Applied Accessories

PLASTIC CORNER BEAD

09 24 00

CORNER BEAD

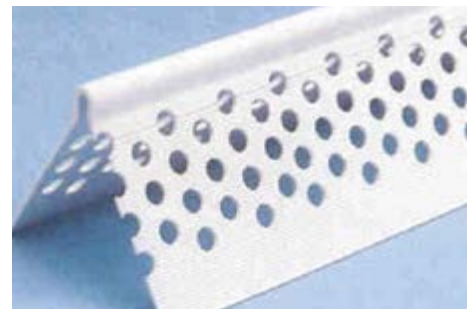
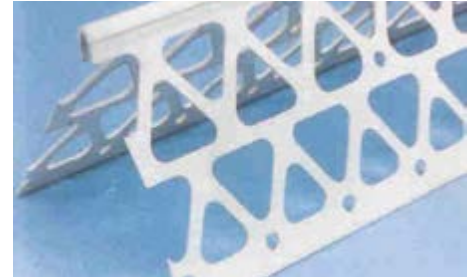
Vinyl Corner Bead reinforces exterior corners with durable and straight corners. It is easily curved into almost any radius by snipping one flange. The addition of stiffener ribs and slotted nailing holes make this product easy and quick to install, level and straight. AMICO AMX1 and AMX2 shipped with a supply of “patent pending” connector clips, designed to easily facilitate the continuous installation of multiple corner beads.

DRYWALL CORNER BEAD

Vinyl Drywall Corner Bead is a strong, durable and straight reinforcement for drywall and veneer plaster corners. All finishing surfaces are knurled for better adhesion.

DRYWALL ARCHCORNER BEAD

AMICO Arch Corner Bead is pre-notched to form curves easily. Improved slots for better radius.



| ITEM # | ITEM NAME | UNITS |
|--------|--------------------------|-------|
| 160302 | P. Corner Bead AMX1 | PC |
| 160303 | P. Corner Bead AMX2 | PC |
| 160304 | P. Corner Bead AMBNCB-75 | PC |
| 160306 | P. Corner Bead AMCB125 | PC |
| 160307 | P. Corner Bead AMCB125A | PC |

Stucco & Direct Applied Accessories

PLASTIC PLASTER STOP

09 24 00

CASING BEAD

Vinyl Casing Bead is often referred to, by the industry, as a plaster stop because it is used to terminate plaster or stucco. Vinyl casing beads are strong and durable, to give maximum protection to this highly vulnerable stucco area.



| ITEM # | ITEM NAME | UNITS |
|--------|-------------------------------|-------|
| 160401 | P. Plaster Stop 1/4" AM66-250 | PC |
| 160402 | P. Plaster Stop 3/8" AM66-380 | PC |
| 160403 | P. Plaster Stop 1/2" AM66-500 | PC |
| 160404 | P. Plaster Stop 3/4" AM66-750 | PC |

X-66 EXPANSION JOINT

09 24 00

EXPANSION JOINT

Deep "V" with removable tape. 1/16" and 1/4" systems. The deep leg groove allows for more expansion and contraction than would be possible with V16" or V4" regular expansion joints. Excellent adhesion of EIFS and paint can be expected.



EXPANSION/CONTROL JOINT

"M" TYPE with REMOVABLE TAPE-"M" Type Expansion Control Joint will offer ample movement to prevent most structural cracks due to expansion and contraction. Note removable tape has been provided to clean the joint after plastering.



| ITEM # | ITEM NAME | UNITS |
|--------|--|----------|
| 160300 | Fiberglass Mesh Plastic Corner Bead (2.5MM LONG) | 50PC/box |
| 160500 | P. Deep "V" Exp Joint 1/16" | PC |
| 160501 | P. Control Joint 1/4" AMCJX-250 | PC |
| 160502 | P. Deep "V" Exp Joint 1/4" | PC |
| 160503 | P. Exp Joint 3/8" AMCJM-380 | PC |
| 160504 | P. Exp Joint 1/2" AMCJM500 | PC |
| 160513 | P. Exp Joint Slip #2138X 3/8" | PC |
| 160514 | P. Exp Joint Slip #2080 1/2" | PC |
| 160521 | P. Slip Joint #500-50 1/2" | PC |

Stucco & Direct Applied Accessories

SOFFIT VENT

08 95 00

EIFS SOFFIT VENT

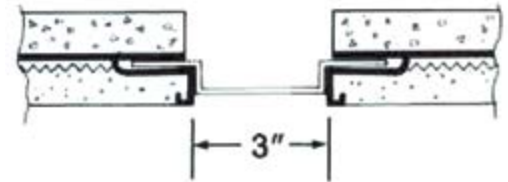
Designed to accommodate one inch foam insulation board, while providing a full three inches of vented area. This provides 14 square inches of open area per linear foot. All surfaces that receive finish have ridges for better adhesion. The top flanges are extra wide, and have a 1/8-inch ground to accommodate the application of the proper thickness of finish.

CONTINUOUS SOFFIT VENTS

| ITEM # | ITEM NAME | UNITS |
|--------|--|--------|
| 160901 | Continuous Soffit Vent 2-5/8" X 1/2" | 13/box |
| 160902 | Continuous Soffit Vent 2-5/8" X 1" | 13/box |
| 160903 | Continuous Soffit Vent 2-5/8" X 1-1/2" | 13/box |
| 160904 | 2 Piece Soffit Vent w/ 90 Degree Leg 2-5/8" X 1/2" | 13/box |
| 160905 | 2 Piece Soffit Vent w/ 90 Degree Leg 2-5/8" X 1" | 13/box |
| 160906 | 2 Piece Soffit Vent w/ 90 Degree Leg 2-5/8" X 1-1/2" | 13/box |

SURFACE MOUNTED SOFFIT VENTS

| ITEM # | ITEM NAME | UNITS |
|--------|-------------------------|--------|
| 160921 | 3" Surface Mounted Vent | 35/box |
| 160922 | 4" Surface Mounted Vent | 35/box |



Sealants/Caulking

TREMCO SPECTREM 3

07 92 00

A general purpose, low modulus, high performance, one part, neutral curing, non-staining, construction grade silicone sealant. Spectrem 3 has been formulated to offer exceptional physical properties, making it ideal for sealing dynamically moving joints associated with material having a high coefficient of linear expansion such as EIFS, aluminum curtain walls, metal panels and window perimeters. Spectrem 3 provides high performance capabilities and the unique ability to apply in bulk over a broad temperature range.



| ITEM # | ITEM NAME | COLOR | PACKAGING |
|------------|-------------------|-------------------|----------------|
| 180811-ADT | Tremco Spectrem 3 | ADOBE TAN | 600 ml Sausage |
| 180811-ALU | Tremco Spectrem 3 | ALUMINUM STONE | 600 ml Sausage |
| 180811-AND | Tremco Spectrem 3 | ANODIZED ALUMINUM | 600 ml Sausage |
| 180811-BLK | Tremco Spectrem 3 | BLACK | 600 ml Sausage |
| 180811-BLU | Tremco Spectrem 3 | BLUE SPRUCE | 600 ml Sausage |
| 180811-BRD | Tremco Spectrem 3 | DARK BRONZE | 600 ml Sausage |
| 180811-BRL | Tremco Spectrem 3 | LIGHT BRONZE | 600 ml Sausage |
| 180811-BRN | Tremco Spectrem 3 | BRONZE | 600 ml Sausage |
| 180811-BUF | Tremco Spectrem 3 | BUFF | 600 ml Sausage |
| 180811-CHA | Tremco Spectrem 3 | CHARCOAL | 600 ml Sausage |
| 180811-CHM | Tremco Spectrem 3 | CHAMPAGNE | 600 ml Sausage |
| 180811-DUR | Tremco Spectrem 3 | DUSTY ROSE | 600 ml Sausage |
| 180811-GRA | Tremco Spectrem 3 | GRAY | 600 ml Sausage |
| 180811-IVO | Tremco Spectrem 3 | IVORY | 600 ml Sausage |
| 180811-LIM | Tremco Spectrem 3 | LIMESTONE | 600 ml Sausage |
| 180811-PRW | Tremco Spectrem 3 | PRECAST WHITE | 600 ml Sausage |
| 180811-RUB | Tremco Spectrem 3 | RUSTIC BRICK | 600 ml Sausage |
| 180811-SAN | Tremco Spectrem 3 | SANDSTONE | 600 ml Sausage |
| 180811-WHI | Tremco Spectrem 3 | WHITE | 600 ml Sausage |
| 180811-WHO | Tremco Spectrem 3 | OFF WHITE | 600 ml Sausage |

TREMCO SPECTREM 4-TS

07 92 00

Spectrem 4-TS is a multi-component, neutral-curing, low-modulus silicone sealant specially formulated for use in dynamically moving building joints with a +/-50% movement. Spectrem 4-TS offers excellent performance in moving joints for both new construction and renovation projects. Typical applications for Spectrem 4-TS include: EIFS, expansion and control joints, tilt-up panel joints, precast concrete panel joints, perimeter caulking (windows, door, panels), etc.

- Tinted on-site (Mixed with Colour Packs)
- Expanded Colour Selection (70+ Colours)

| ITEM # | ITEM NAME | PACKAGING |
|--------|---------------------------------|-----------|
| 180820 | Tremco Spectrem 4 Caulking 6LTS | Pail |
| 180821 | Tremco Spectrem 4 Colour Pack | 6/case |



Sealants/Caulking

BACKER ROD

07 92 00

Closed cell backer rod in continuous lengths of extruded, closed-cell polyethylene foam used as a backing material for elastomeric and other cold applied sealants. Closed-cell compressible foam rope. Excellent for filling deep gaps before caulking.

| ITEM # | ITEM NAME | SIZE | PACKAGING |
|--------|----------------------|------|----------------|
| 180720 | Back Rod Closed Cell | 1/4" | 6400 ft/carton |
| 180721 | Back Rod Closed Cell | 3/8" | 3600 ft/carton |
| 180722 | Back Rod Closed Cell | 1/2" | 2500 ft/carton |
| 180723 | Back Rod Closed Cell | 5/8" | 1550 ft/carton |
| 180724 | Back Rod Closed Cell | 3/4" | 1100 ft/carton |
| 180725 | Back Rod Closed Cell | 1" | 550 ft/carton |



DUREX CAULKED JOINT WEEPERS

07 92 00

Closed cell backer rod in continuous lengths of extruded, closed-cell polyethylene foam used as a backing material for elastomeric and other cold applied sealants. Closed-cell compressible foam rope. Excellent for filling deep gaps before caulking.

| ITEM # | ITEM NAME | SIZE | PACKAGING |
|--------|-----------------------------|----------------------|-----------|
| 180515 | DUREX Caulked Joint Weepers | 50 mm x 25 mm x 8 mm | 50/pack |



CAULK GUNS

07 92 00

HEAVY DUTY

1/10 gallon, half-barrel with smooth rod and quick release mechanism. Holds most standard cartridges. Used for simple application of glazing, sealants, caulks, and other home improvement compounds.

| ITEM # | ITEM NAME | PACKAGING |
|--------|-------------------------|-----------|
| 490762 | Heavy Duty Caulking Gun | Each |



SAUSAGE & BULK GUNS

To be used in conjunction with sealant sausages or bulk caulking. Simply drop the sausage into the gun, remove the clip from the sausage and cut the replaceable nozzle. For a bulk gun, simply draw the sealant from the pail similar to when using a medical needle.

| ITEM # | ITEM NAME | PACKAGING |
|--------|---|-----------|
| 490764 | Tremco Bulk Gun (For Spectrum 4-TS) | Each |
| 490765 | Sausage Gun - Economical | Each |
| 490766 | Sausage Gun Replacement Nozzle | Each |
| 490767 | Professional Sausage Gun - Albion | Each |
| 490768 | Professional Sausage Gun Replacement Nozzle | Each |



Concrete & Masonry Restoration

- Concrete Mix Design Charts
- Durex Dur-A-Patch
- Durex Dryplast
- Durex Dryplast Concentrate
- Durex Uniplast & Acrylic Resin Bond
- Durex Flexcrete
- Durex Ectoflex
- Durex Dur-A-Top 15 Self Leveling Cement
- Durex Sand Mix
- Portland Cement
- Tremco Dymonic 100
- Tremco Vulkem 45 SSL
- Durex EMC Knife Grade
- Durex Acrybond Concentrate
- Acrylic Resin Bond
- Dur-A-Patch Liquid Additive
- Durex Cement Bond
- Durex Acrybond 'S'
- Durex AR Grade 1" Grid Concrete Reinforcing Mesh
- Durex E-Grade 1½" Grid Concrete Reinforcing Mesh (AR Coated)
- Durex Fiberglass Reinforcing Mesh
- Concrete Restoration Guide
- Masonry Restoration Guide

Moisture Protection

- Durex Flexcrete
- Durex Blue Shield
- Durex Dur-A-Mastic 100
- Durex Green Guard Plus
- Durex Ectoflex
- Durex Barrier Seam Tape
- Durex Flex Seal
- Durex Flex Seal VP
- Durex Dur-O-Lastic
- Durex Ectoflex
- Super Stick Building Tape
- Durex Flex-Seal Wall Flashing Tape
- Durex Flex-Seal Red Primer
- Durex Durathane B500
- Durex Uraflex 360/375UV
- Durex Acrotel SB
- Durex Uraflex Traffic Bearing Waterproofing System
- Durex Mechanical Room Waterproofing System
- Durex Garbage Room Waterproofing System
- Durex Uraflex 360
- Durex Uraflex 361
- Durex Uraflex 375 UV

Protective Coatings & Sealers

- Durex Brush Coat
- Acrotel EC-A
- Durex Ecto-Sil 1000

- Durex EMC
- Durex EMC Knife Grade
- Durex Roltex
- Durex Dur-X-Cel 100
- Durex Dur-X-Cel Primer
- Durex Acrotel SB Non-Porous Primer
- Durex Durathane 90
- Durex Epotel Anti-Corrosion Metal Primer
- Durex Epotel WB DTM
- Durex TBC
- Durex Acrotel SB Metal Primer
- Durex Acrotel DTM
- Durex Acrotel SB Primer
- Durex Acrotel SB Metal
- Durex Wall Seal
- Durex Dur-A-Seal A28
- Durex Dur-A-Seal A.G.
- Durex Dur-A-Seal XL 250
- Durex Acrotel SB Floor Grade
- Durex Concrete Sealer WB 18/25
- Durex Epotel 80
- Durex Diamond LOK
- Durex Silane WRS 40/100

Floor Coatings

- Durex Epotel 100 GSC
- Durex Epotel 100 GSC Rapid Cure
- Durex Epotel 100 GSA
- Durex Uraflex 100
- Durex Uraflex 100 OP
- Durex Epoxy Guard Pro
- Durex Epotel 100 UR
- Durex Epotel 100 Novolac
- Durex Epotel 100 CR
- Durex Duracrete Broadcast
- Durex Duracrete Trowel
- Durex Epotel 100 TL
- Durex Duracrete Aggregate
- Durex Uracrete
- Durex Art-I-Stone
- Durex Dur-A-Flake
- Durex Dur-A-Quartz Broadcast
- Durex Dur-A-Quartz Trowel
- Durex Granitech
- Durex Acrutel 50
- Durex Aquathane
- Durex Durathane 90
- Durex Polyuretel
- Durex Epotel Multi-Prime
- Durex Moisture Block 100
- Durex Uraflex Primer
- Durex Uraflex Citrus Primer

- Durex Epotel 100 Crack Filler
- Durex Anti Slip Aggregates
- Durex Acrotel SB
- Durex TBC
- Durex Epoxy Guard
- Durex Epoxy Guard Pro

Exterior Wall Systems

- Durex Flexlite Select
- Durex Quantum Select
- Durex Quantum Select MF
- Durex Quantum 5.0
- Durex Quantum Select ICF
- Durex Equalite
- Durex Insulite EW-17
- Durex Flexlite ADH
- Durex Lite Coat
- Durex Stucco Lite
- Durex Stucco Wall
- Durex ICF Coating

Architectural Coatings & Decorative Finishes

- Durex Marble Coat 1.5
- Durex Marble Coat 1.0
- Durex Venecian
- Pebble Float
- Durex Sandex
- Durex Trim Spray
- Durex Stucco Spray
- Durex Graffiato
- Durex Sandstone
- Durex Rasato
- Durex Rustico
- Durex Antico Glaze
- Durex Trowel Grade Stucco
- Durex Gemstone
- Durex Granite
- Durex Stonetex
- Durex Crystal Coat
- Durex Cromatex
- Durex Aggex
- Durex Rough Cast
- Durex Decorative Stucco Ext
- Durex Monocapa
- Durex Monofino
- Durex Dur-A-Brick
- Durex Brush Coat
- Durex EMC
- Durex Dur-X-Cel 100
- Durex Roltex
- Durex Kolor Gard
- Durex Elastomeric Brush Coat
- Durex Elastomeric Graffiato
- Durex Elastomeric Marble Coat 1.0
- Durex Elastomeric Marble Coat 1.5
- Durex Elastomeric Sandex
- Durex Elastomeric Venecian

- Acroplast Venetian Plaster
- Durex Super Stipple
- Crackle Size Basecoat
- Crackle Stone & Antique Topcoat
- Crackle Glaze
- Coraltex Metallic Hammer Tone
- Scumble Glaze
- Extender Glaze
- Suede Latex
- Metallic Paint
- Luster Plaster (Orystone)
- Acronament (Gesso)
- Durex Texture Spray
- Durex Ceiling Coat
- Durex Plaster Bond Blue & White

EIFS Stucco & Components

- Durex Uniplast & Durex Acrybond 'S
- Durex Flexcrete'
- Durex Monobase
- Durex VCA 3.0 Insulation Adhesive
- Durex Monofino
- Durex Monocapa
- Durex Pool Marble Finish
- Durex Trim Coat
- Durex Fiberglass Reinforcing Mesh
- Durex Intermediate Mesh
- Durex High Impact Mesh
- Durex Detail Fiberglass Mesh
- Durex Trim Mesh
- Durex Barrier Seam Tape
- Durex Quantum Select
- Durex Quantum 5.0
- Durex Flexlite Select EPS
- Type 1 Eps
- Type 2 Eps
- Type 3 Eps
- Durex Equalite Mineral Fiber Insulation
- Durex Boundary Boards
- Durex Flexlite Select Vent Board
- Durex Quantum Select Vent Boards
- Durex Dur-A-Mastic 100
- Durex Blue Shield
- Durex Flexcrete
- Durex Green Guard Plus
- Durex Ectoflex
- Durex Barrier Seam Tape
- Durex Flex-Seal
- Flex-Seal VP
- Durex Primerless
- Durex Primerless EIFS Tape

- Durex EIFS Tape
- Durex Flex Seal Mastic
- Durex Flex Seal Wall Flashing Tape
- Durex Flex Seal Red Primer
- Durex Drainage Mat
- Durex Drainage Vent
- Durex Drainage Track
- Durex Uni-Flash Drainage Track
- Kick-Out Flashing
- Window Drips
- Starter Strip EIFS Drainage
- Durex Dryplast
- Durex Uniplast & Acrylic Resin Bond
- Durex Flexcrete
- Permabase Cement Board
- Durex Glass Gold
- Stucco & Stone Veneer Drainage Matt
- Mesh Lath / Rib Lath
- Metal Corner Bead
- Metal Expansion Joints
- Metal Plaster Stop / Casing Bead
- Plastic Corner Bead
- Plastic Plaster Stop
- X-66 Expansion Joint
- Soffit Vent
- Tremco Spectrum 3
- Tremco Spectrum 4-TS
- Backer Rod
- Durex Caulked Joint Weepers
- Caulk Guns

Tools & Accessories

- MJP Anchors
- Steel Fasteners
- Ucan Scru-It Masonry Anchor
- Pin Bolts
- U-Drive - Concrete Nails
- Cement Board Anchors
- Roof Grip Screws
- ULP Plates
- Wind-Devil WDP Plates
- Long-Lock Plates
- SDS Hammer Drill Bit
- Groove Tool Trowel
- Straight Groove Blade
- Portable Hot Groover
- Windlock 2-QC Blue Hot Knife
- Yellow Hot Knife Kits
- Hot Wire Machine Accessories
- V-Groove Sleds
- V-Groove Blades
- Square Groove Reveals
- Square Groove Blades
- Angled Groove Reveals
- Angled Groove Blades
- Beveled Groove Sleds

- Beveled Groove Blades
- Permashape Golden Stainless Steel "Broken In" Trowel
- Permashape High Carbon "Broken In" Trowel
- Permashape Golden Stainless Steel w/ Durasoft Trowel
- Golden Stainless Steel w/ Durasoft Xtralite Trowel
- Swimming Pool Trowel
- Finishing Float
- Inox Stainless Steel Venetian Trowels
- Corner Trowels
- Notched Trowel
- Tuck Trowel
- Margin Trowel
- Featheredges
- Hawks
- Ornament Tools
- Rub Bricks & Accessories
- Bucket Scoops
- Stainless Steel Putty Knives
- Putty Knives
- Knives
- Durarasp
- Tiger Claw Durarasp
- Marshalltown Rasp
- Duravac Heavy Duty Electric Rasp + Shop-Vac Back Pack
- Hopper & Texture Guns
- Spray Foam, Guns & Cleaner
- Mixing Paddles
- Mixing Drills
- Chalk Line
- Staple Guns/Tackers
- Staples
- Measuring Tape/Levels
- Top Quality Brushes
- Medium Quality Brushes
- Roller Cage & Refills
- Fiberglass Pole Extensions
- Paint Trays & Accessories
- Wash Brushes
- Masking & Joint Tape
- Stucco Tape & Specialty Masking Tapes
- Tarp/Polyethylene/Masking
- Window Film Protection Tape
- Kraft Paper
- Squeegees
- Spike Shoes
- Spike Roller
- Flooring Trowels
- Cam Guage Rakes

Durex®

CIRCA 1990



DURabond 

Durabond Products Limited

www.durabond.com

Head Office - Toronto

55 Underwriters Road
Scarborough, ON M1R 3B4
(416) 759 4474

Mississauga Office

6178 Netherhart Road
Mississauga, ON L5T 1B7
1 (905) 565 9283

Western Canada Office

14345 120th Avenue
Edmonton, Alberta T5L 2R8
1 (780) 451 6364

info@durabond.com

1 (877) 387 2266