

**Durex®**



**DURabond** **50**  
YEARS  
1967-2017

# Contractor's Guide

**Building Products & Solutions**

**EXTERIOR WALL SYSTEMS**

# Pushing the Envelope for Excellence

You have one thing on your mind when it comes to choosing building products & solutions – they have to do more than perform today; they have to outperform for the long term. That’s why for over 50 years, Durabond has been the choice for those who expect more.

We are a leading manufacturer and developer of Exterior Insulated Cladding Systems, Specialized Architectural Coatings, Concrete Restoration Products, Protective Coatings, and a wide range of other related construction products. Whether a high-rise building or a single-family dwelling, a new construction or a restoration project, we understand the critical importance of getting it right the first time.

Our innovative, highly-engineered and tested systems are a creative solution for architects and designers. We are a tried, true and trusted choice for builders, engineers and homeowners who demand durability, superior flexibility, and aesthetic beauty.



---

## Application Method Legend

### Use of Product



Recommended



Not Recommended



Safety Hazard

---

### Application Methods



Trowel



Roller



Spray



Sponge





# Exterior Wall Systems

Durabond's Cladding and Building Envelope Systems are customizable, multilayered insulated and non-insulated systems which offer exceptional design flexibility to match virtually any architectural style. The Durex® line of Moisture Managed Exterior Insulation and Finishing Systems (EIFS) are CCMC Approved and are proven to perform in the harshest environments.

- Geometrically Defined Drainage Cladding Systems
- Moisture Managed EIFS Wall Systems
- Stucco & Direct Applied Wall Systems

---

## 86 GDDC EIFS Systems

*10mm Geometrically Defined Drainage Cavity*

Durex Flexlite Select  
Durex Quantum Select  
Durex Quantum Select MF  
Durex Quantum 5.0  
Durex Quantum Select ICF

## 96 Traditional EIFS Systems

*Flat Insulation*

Durex Equalite  
Durex Insulite EW-17  
Durex Flexlite ADH

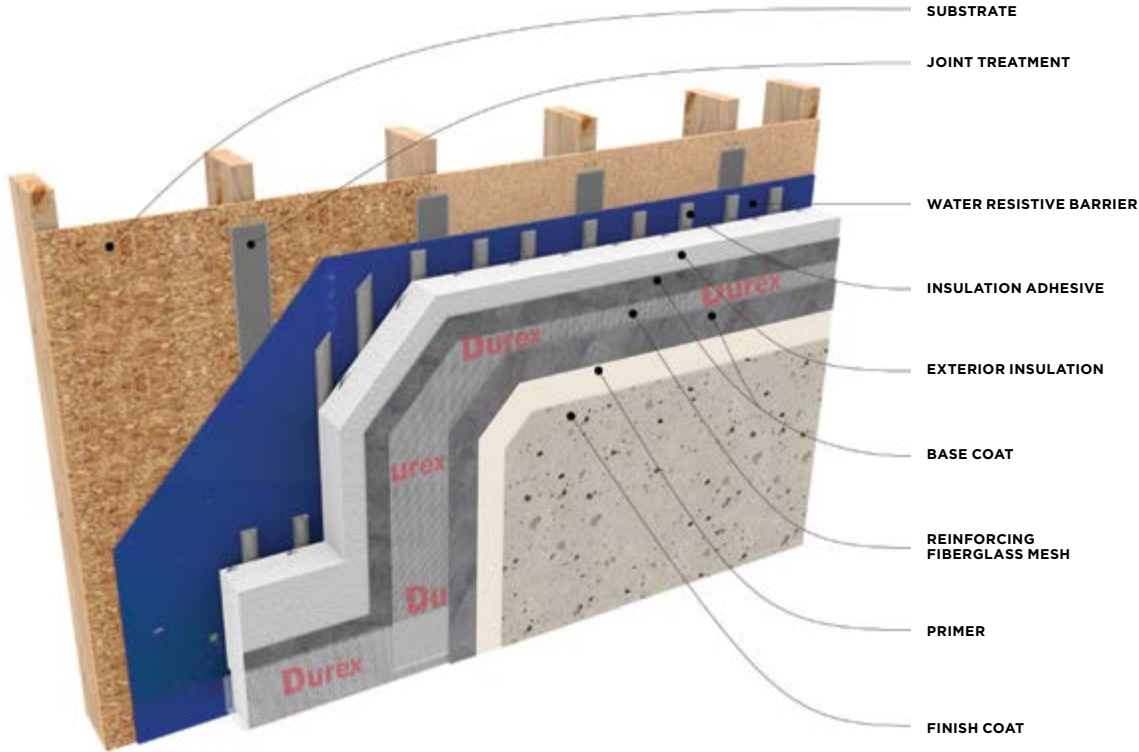
## 102 Direct Applied Stucco Systems

Durex Lite Coat  
Durex Stucco Lite  
Durex Stucco Wall  
Durex ICF Coating



## Durex Flexlite Select

Moisture Managed Exterior Insulation and Finish System (Chemically Adhered)



### Description

DUREX Flexlite Select ADH is a drained exterior insulation and finish system designed for low-rise residential construction. It consists of expanded polystyrene insulation with factory cut channels, ensuring positive drainage of incidental moisture.

The DUREX Flexlite Select ADH system is ULC rated as non-combustible cladding meeting building code requirements for non-combustible construction.

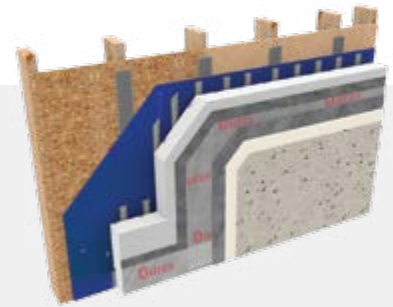
### Advantages

- Optimized for use in low-rise residential construction
- Continuous venting at floor lines and horizontal terminations, using pre-manufactured vented boards
- 10mm Drainage Channels ensure positive drainage through a network of vertical and horizontal channels
- Continuous air/vapour barrier
- Simple interfacing with other pressure equalized
- Lightweight
- Economical
- Aesthetic design flexibility

### Options

- **Air/Vapour Moisture Barrier -**  
Refer to page 160  
(design will dictate type of barrier required)
- **Attachment -**  
Durex Flexcrete / Durex Monobase / Durex VCA 3.0  
(type of substrate and design will dictate type of attachment)
- **Insulation -**  
Minimum thickness 2" (50 mm) channelled vertically @ 12" (300 mm) o.c.
- **Fibermesh Reinforcing -**  
Depending on impact resistance required substitute with appropriate Durex fiberglass mesh
- **Base Coat -**  
Conditional on project specification requirements, may substitute Durex Flexcrete with Durex Monobase

## GDDC EIFS Systems



07 24 00

**Complies with:**

Residential: DB - Dual Barrier EIFS  
 D - Drained EIFS  
 Non Combustible cladding  
 CCMC Evaluation # 13103-R  
 CAN / ULC S101 - M89 - CAN / ULC S114 - M85

**MOISTURE / AIR BARRIER**

REFERENCE PAGE 162

ITEM #	ITEM NAME	PACKAGING	COVERAGE
180403	Durex Blueshield	18.9L pail	200 ft²/1 pail mix @ 1 mm thick

**TRANSITION MEMBRANE**

REFERENCE PAGE 167

ITEM #	ITEM NAME	PACKAGING	COVERAGE
180701	4" Primerless EIFS Tape	12 rolls/box	75 ln.ft/roll

**RIGID INSULATION BOARDS**

REFERENCE PAGE 160

ITEM #	ITEM NAME	PACKAGING	COVERAGE
110800	Durex Flexlite Select Boards	8 ft²/board	2' x 4' Boards
110800S	Durex Flexlite Select Vent Boards	4 ln ft/board	8" x 4' Boards

**INSULATION ADHESIVE**

REFERENCE PAGE 144

ITEM #	ITEM NAME	PACKAGING	COVERAGE
010300	Durex Flexcrete	30 kg/pail	120-140 ft²/pail in vertical channels
010300B	Durex Flexcrete 'B'	22.7 kg/bag	-

**REINFORCING MESH**

REFERENCE PAGE 148

ITEM #	ITEM NAME	PACKAGING	COVERAGE
170201	Durex 040 Fiberglass mesh (Standard 4 oz)	38 inch/roll	38" x 150' rolls (475ft²/roll)
170401	Detail mesh 9-1/2" (Standard 4 oz)	9-1/2 inch/roll	9-1/2 x 150' rolls (150ft²/roll)
170600	High Impact Fibreglass Mesh (15 oz)	38 inch/roll	38" x 75' rolls (225 ft²/roll)

**BASE COAT**

REFERENCE PAGE 144

ITEM #	ITEM NAME	PACKAGING	COVERAGE
010300D	Durex Monobase	22.7kg/bag	70-90 ft²/bag

**ARCHITECTURAL COATINGS PRIMER**

REFERENCE PAGE 46

ITEM #	ITEM NAME	PACKAGING	COVERAGE
010101	Brush Coat Primer	25 kg/pail	700 ft²/1pail (70 m²/pail/coat)

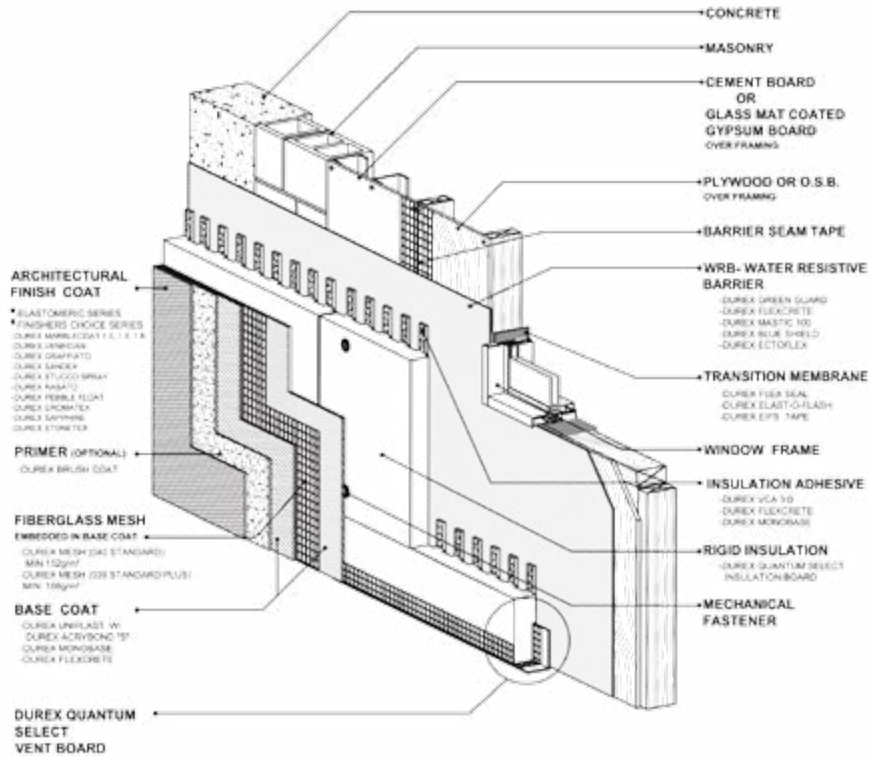
**ARCHITECTURAL FINISH COAT**

REFERENCE PAGE 112

ITEM #	ITEM NAME	PACKAGING	COVERAGE
	Classic Finishes	30 kg/pail	Refer to page 112
	Specialty Finishes	30 kg/pail	Refer to page 117

## Durex Quantum Select

“Advanced Drained Cladding” - Scientifically Designed to Outperform Moisture Managed Exterior Insulation and Finish System (Chemically Adhered)



### Description

Quantum Select is a high-performance exterior insulated cladding featuring a 10mm Geometrically Defined Drainage Cavity. Quantum Select is engineered to provide drainage and accelerated drying of incidental moisture in the cavity wall while retaining maximum insulation value through the reduction of convection.

### Advantages

- Proven to retain R-Value when compared with conventional EIFS Systems
- Meets Coastal Climate requirements
- 10mm Geometrically Defined Drainage Cavity:
  - 10mm drainage cavity allows for superior drainage
  - Eliminates Capillary Action
  - Diffuses Vapour Flow
- Optimal Drainage Path
  - Gravity Induced Flow
  - Accelerates drying time of drainage plane
  - Provides safe distribution of moisture through wall assembly
  - Adaptable moisture control strategies

### Options

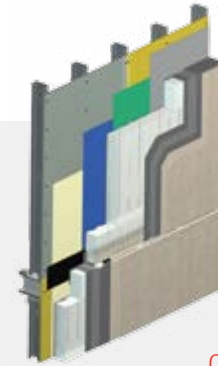
- **Air / Vapour / Moisture Barrier**  
Durex Flexcrete / Durex Flexseal / Durex Green Guard (design will dictate type of barrier required)
- **Attachment -**  
Durex Flexcrete / Durex Monobase (type of substrate and design will dictate type of attachment)
- **Insulation -**  
Minimum thickness 2" (50 mm) channeled vertically @ 12" (300 mm) o.c.
- **Fibermesh Reinforcing -**  
Depending on impact resistance required substitute with appropriate Durex fiberglass mesh
- **Base Coat -**  
Conditional on project specification requirements, may substitute Durex Uniplast with Durex Monobase

GDDC EIFS Systems



**Complies with:**

Residential: DB - Dual Barrier EIFS  
 D - Drained EIFS  
 Non Combustible cladding  
 CCMC Evaluation # 13103-R  
 CAN / ULC S101 - M89 - CAN / ULC S114 - M85



07 24 00

**MOISTURE / AIR BARRIER**

**REFERENCE PAGE 164**

ITEM #	ITEM NAME	PACKAGING	COVERAGE
010300	Durex Flexcrete	30 kg/pail	200 ft²/1 pail mix @ 1.5 mm thick
010300B	Durex Flexcrete "B"	22.7 kg/bag	-

**TRANSITION MEMBRANE**

**REFERENCE PAGE 167**

ITEM #	ITEM NAME	PACKAGING	COVERAGE
180701	4" Primerless EIFS Tape	12 rolls/box	75 ln.ft/roll

**INSULATION ADHESIVE**

**REFERENCE PAGE 144**

ITEM #	ITEM NAME	PACKAGING	COVERAGE
010300	Durex Flexcrete	30 kg/pail	120-140 ft²/pail in vertical channels
010300B	Durex Flexcrete 'B'	22.7 kg/bag	-

**RIGID INSULATION BOARDS**

**REFERENCE PAGE 154**

ITEM #	ITEM NAME	PACKAGING	COVERAGE
110600	Quantum Select EPS Boards	8 ft²/board	2' x 4' Boards (typical bundle 480 BF)
110100S	Quantum Select Boundray Boards	8 fl/board	8" x 96" EPS Insulation Boards
110600S	Quantum Starter Vent Boards	8 fl/board	8" x 8' pre-wrapped & pre-coated boards

**REINFORCING MESH**

**REFERENCE PAGE 148**

ITEM #	ITEM NAME	PACKAGING	COVERAGE
170201	Durex 040 Fiberglass mesh (Standard 4 oz)	38 inch/roll	38" x 150' rolls (475ft²/roll)
170401	Detail mesh 9-1/2" (Standard 4 oz)	9-1/2 inch/roll	9-1/2 x 150 lf rolls (150ft²/roll)
170600	High Impact Fibreglass Mesh (15 oz)	38 inch/roll	38" x 75 lf rolls (225 ft²/roll)

**BASE COAT**

**REFERENCE PAGE 143**

ITEM #	ITEM NAME	PACKAGING	COVERAGE
010302	Durex Uniplast	22.7 kg/bag	60 ft²/bag mix @ 3mm thickness
010213	Durex Acrybond 'S'	18.9 L/pail	-

**ARCHITECTURAL COATINGS PRIMER**

**REFERENCE PAGE 46**

ITEM #	ITEM NAME	PACKAGING	COVERAGE
010101	Brush Coat Primer	25 kg/pail	700 ft²/1pail (70 m²/pail/coat)

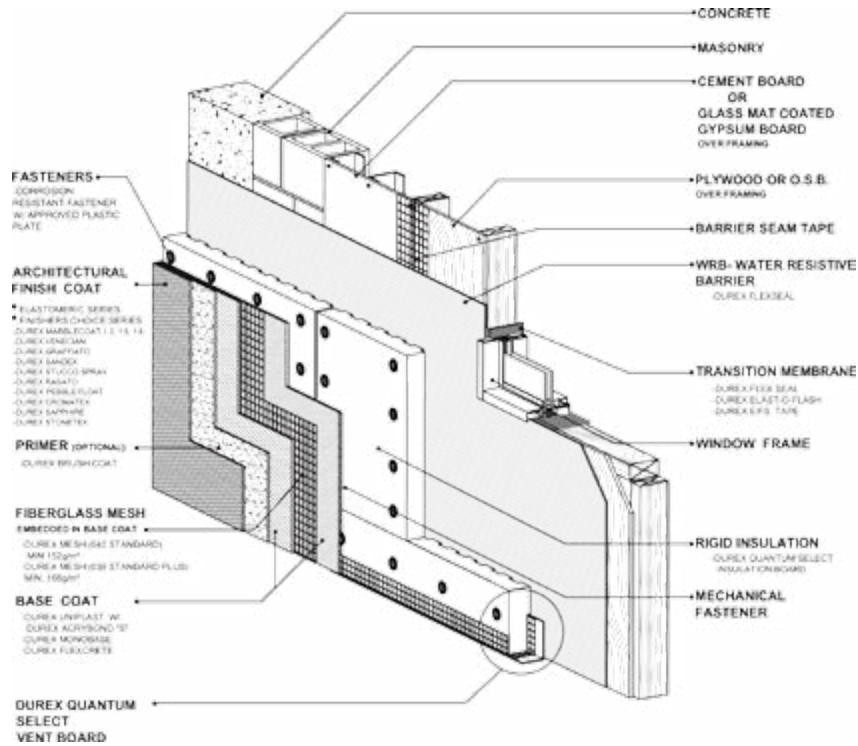
**ARCHITECTURAL FINISH COAT**

**REFERENCE PAGE 112**

ITEM #	ITEM NAME	PACKAGING	COVERAGE
	Classic Finishes	30 kg/pail	Refer to page 112
	Specialty Finishes	30 kg/pail	Refer to page 117

## Durex Quantum Select MF

“Advanced Drained Cladding” - Scientifically Designed to Outperform Moisture Managed Exterior Insulation and Finish System (Mechanically Fastened)



### Description

Quantum Select MF is a CCMC approved, mechanically attached high-performance insulated cladding featuring a 10mm Geometrically Defined Drainage Cavity. Quantum Select is engineered to provide drainage and accelerated drying of incidental moisture in the cavity wall while retaining maximum insulation value through the reduction of convection.

### Advantages

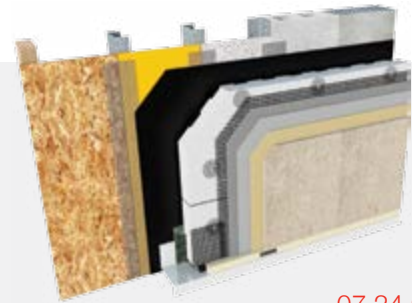
- Mechanical Attachment over Wood (CCMC approved)
- Proven to retain R-Value when compared with conventional EIFS Systems
- Meets Coastal Climate requirements
- 10mm Geometrically Defined Drainage Cavity:
  - 10mm drainage cavity allows for superior drainage
  - Eliminates Capillary Action
  - Diffuses Vapour Flow
- Optimal Drainage Path
  - Gravity Induced Flow
  - Accelerates drying time of drainage plane
  - Provides safe distribution of moisture through wall assembly
  - Adaptable moisture control strategies

### Options

- **Air/Vapour Barrier -** Durex Flex Seal
- **Attachment -** Mechanically Fastened (type of substrate will dictate type of attachment)
- **Insulation -** Minimum thickness 2" (50 mm) channeled vertically @ 12" (300 mm) o.c.
- **Fibermesh Reinforcing -** Depending on impact resistance required substitute with appropriate Durex fiberglass mesh
- **Base Coat -** Conditional on project specification requirements, may substitute Durex Uniplast with Durex Monobase



# GDDC EIFS Systems



07 24 00

**Complies with:**

Residential: DB - Dual Barrier EIFS  
 D - Drained EIFS  
 Non Combustible cladding

CCMC Evaluation # 13103-R  
 CAN / ULC S101 - M89  
 CAN / ULC S114 - M85

**MOISTURE / AIR BARRIER**

**REFERENCE PAGE 166**

ITEM #	ITEM NAME	PACKAGING	COVERAGE
180300	Flexseal 36" Membrane	83.3 lf/roll	250 ft²/roll
180320	Flexseal V.P.	98 lf/roll	306 ft²/roll

**TRANSITION MEMBRANE**

**REFERENCE PAGE 167**

ITEM #	ITEM NAME	PACKAGING	COVERAGE
180701	4" Primerless EIFS Tape	12 rolls/box	75 ln.ft/roll

**MECHANICAL ATTACHMENT**

**(FASTENERS) REFERENCE PAGE 191**

ITEM #	ITEM NAME	PACKAGING	COVERAGE
260203	WDP Plates	1000 pcs/box	-

**RIGID INSULATION BOARDS**

**REFERENCE PAGE 154**

ITEM #	ITEM NAME	PACKAGING	COVERAGE
110600	Quantum Select EPS Boards	8 ft²/board	2' x 4' Boards (typical bundle 480 BF)
110100S	Quantum Select Boundray Boards	8 fl/board	8" x 96" EPS Insulation Boards
110600S	Quantum Starter Vent Boards	8 fl/board	8" x 8' pre-wrapped & pre-coated boards

**REINFORCING MESH**

**REFERENCE PAGE 148**

ITEM #	ITEM NAME	PACKAGING	COVERAGE
170201	Durex 040 Fiberglass mesh (Standard 4 oz)	38 inch roll	38" x 150 lf rolls (475ft²/roll)
170401	Detail mesh 9-1/2" (Standard 4 oz)	9-1/2 inch/roll	9-1/2 x 150 lf rolls (150ft²/roll)

**BASE COAT**

**REFERENCE PAGE 143**

ITEM #	ITEM NAME	PACKAGING	COVERAGE
010302	Durex Uniplast	22.7 kg/bag	60 ft²/bag mix @ 3mm thickness
010213	Durex Acrybond 'S'	18.9 L/pail	

**ARCHITECTURAL COATINGS PRIMER**

**REFERENCE PAGE 46**

ITEM #	ITEM NAME	PACKAGING	COVERAGE
010101	Brush Coat Primer	25 kg/pail	700 ft²/1 pail (70 m²/pail/coat)

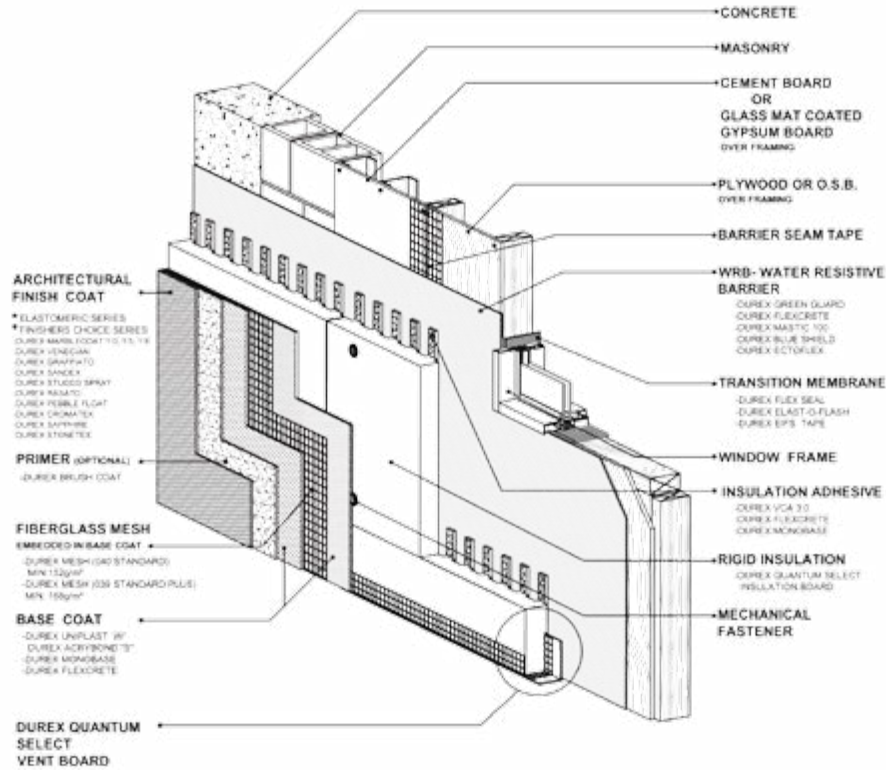
**ARCHITECTURAL FINISH COAT**

**REFERENCE PAGE 112**

ITEM #	ITEM NAME	PACKAGING	COVERAGE
	Classic Finishes	30 kg/pail	Refer to page 112
	Specialty Finishes	30 kg/pail	Refer to page 117

## Durex Quantum 5.0

High Density EPS Insulated Drained Cladding  
R-5 per inch, drained EIFS Cladding



### Description

Durex Quantum 5.0 is a high performance, R-5 per inch EIFS system featuring a high density EPS with a 10mm geometrically defined drainage cavity. The system is designed for applications where higher a specific R-value per inch is required.

### Advantages

- High density EPS proven to achieve an R-value of R-5 per inch at -18°C
- Proven to retain R-Value when compared with conventional EIFS Systems
- Meets Coastal Climate requirements
- 10mm Geometrically Defined Drainage Cavity:
  - 10mm drainage cavity allows for superior drainage
  - Eliminates Capillary Action
  - Diffuses Vapour Flow
- Optimal Drainage Path
  - Gravity Induced Flow
  - Accelerates drying time of drainage plane
  - Provides safe distribution of moisture through wall assembly
  - Adaptable moisture control strategies

### Options

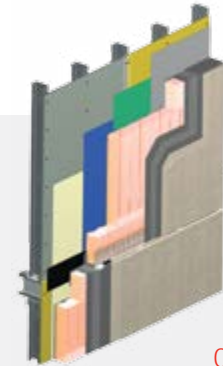
- **Air / Vapour / Moisture Barrier**  
Durex Flexcrete / Durex Flexseal / Durex Green Guard (design will dictate type of barrier required)
- **Attachment -**  
Durex Flexcrete / Durex Monobase (type of substrate and design will dictate type of attachment)
- **Insulation -**  
Minimum thickness 2" (50 mm) channeled vertically @ 12" (300 mm) o.c.
- **Fibermesh Reinforcing -**  
Depending on impact resistance required substitute with appropriate Durex fiberglass mesh
- **Base Coat -**  
Conditional on project specification requirements, may substitute Durex Uniplast with Durex Monobase

GDDC EIFS Systems



Complies with:

Residential: DB - Dual Barrier EIFS  
 D - Drained EIFS  
 Non Combustible cladding  
 CCMC Evaluation # 13103-R  
 CAN / ULC S101 - M89 - CAN / ULC S114 - M85



07 24 00

**MOISTURE / AIR BARRIER**

**REFERENCE PAGE 164**

ITEM #	ITEM NAME	PACKAGING	COVERAGE
010300	Durex Flexcrete	30 kg/pail	200 ft²/1 pail mix @ 1.5 mm thick
010300B	Durex Flexcrete "B"	22.7 kg/bag	-

**TRANSITION MEMBRANE**

**REFERENCE PAGE 167**

ITEM #	ITEM NAME	PACKAGING	COVERAGE
180701	4" Primerless EIFS Tape	12 rolls/box	75 ln.ft/roll

**INSULATION ADHESIVE**

**REFERENCE PAGE 144**

ITEM #	ITEM NAME	PACKAGING	COVERAGE
010300	Durex Flexcrete	30 kg/pail	120-140 ft²/pail in vertical channels
010300B	Durex Flexcrete "B"	22.7 kg/bag	Use 1/2" x 1/2" notched trowel

**RIGID INSULATION BOARDS**

**REFERENCE PAGE 154**

ITEM #	ITEM NAME	PACKAGING	COVERAGE
110730	Durex Quantum 5.0 EPS Boards	8 ft²/board	2' x 4' Boards (typical bundle 240 BF)

**REINFORCING MESH**

**REFERENCE PAGE 148**

ITEM #	ITEM NAME	PACKAGING	COVERAGE
170201	Durex 040 Fiberglass mesh (Standard 4 oz)	38 inch/roll	38" x 150 lf rolls (475ft²/roll)
170401	Detail mesh 9-1/2" (Standard 4 oz)	9-1/2 inch/roll	9-1/2 x 150 lf rolls (150ft²/roll)

**BASE COAT**

**REFERENCE PAGE 143**

ITEM #	ITEM NAME	PACKAGING	COVERAGE
010302	Durex Uniplast	22.7 kg/bag	60 ft²/bag mix @ 3mm thickness
010213	Durex Acrybond 'S'	18.9 L/pail	

**ARCHITECTURAL COATINGS PRIMER**

**REFERENCE PAGE 46**

ITEM #	ITEM NAME	PACKAGING	COVERAGE
010101	Brush Coat Primer	25 kg/pail	700 ft²/1pail (70 m²/pail/coat)

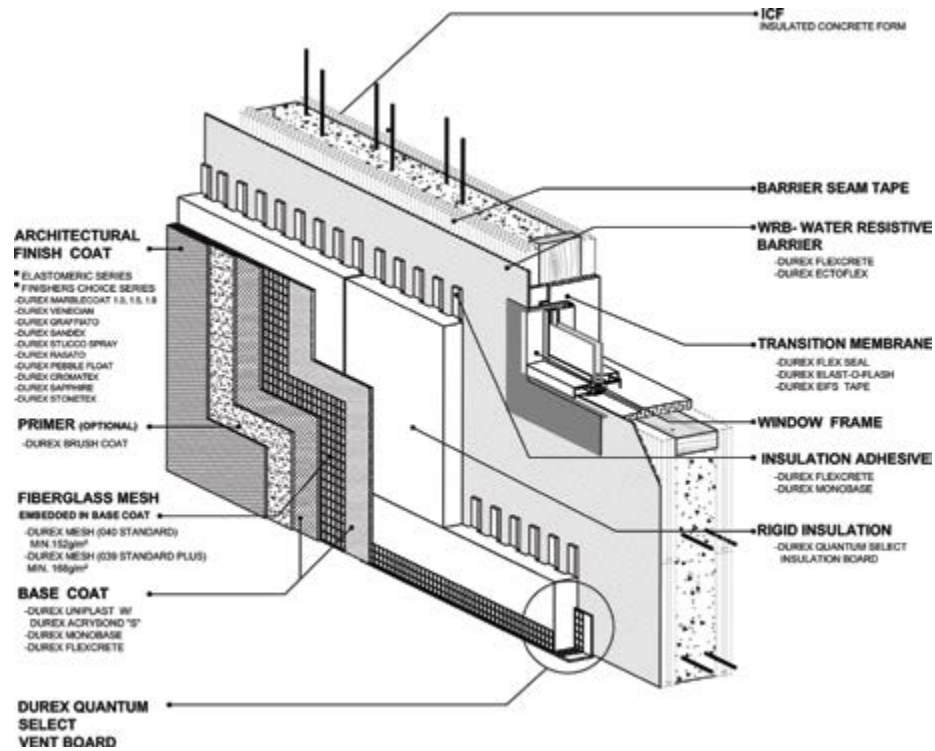
**ARCHITECTURAL FINISH COAT**

**REFERENCE PAGE 112**

ITEM #	ITEM NAME	PACKAGING	COVERAGE
	Classic Finishes	30 kg/pail	Refer to page 112
	Specialty Finishes	30 kg/pail	Refer to page 117

## Durex Quantum Select ICF

Advanced Drained Cladding for Insulated Concrete Forms  
Moisture Managed Exterior Insulation and Finish Systems over ICF (Chemically Adhered)



### Description

Quantum Select ICF is a high-performance exterior insulated cladding for ICF construction. It features a 10mm Drainage Cavity engineered to provide accelerated drying of incidental moisture in the cavity wall while retaining maximum insulation value.

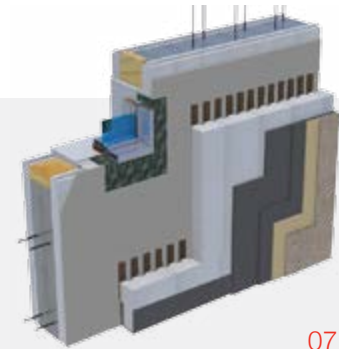
### Advantages

- Specifically designed cladding for Insulated Concrete Forms (ICF's)
- 10mm Drainage Path
- Meets Coastal Climate Requirements
- Optimal Drainage Path
- Protects ICF Assembly

### Options

- **Insulation -**  
Minimum thickness 2" (50 mm)  
Type 2 or Quantum 5.0 EPS available
- **Fibermesh Reinforcing -**  
Depending on impact resistance required substitute with appropriate Durex fiberglass mesh
- **Architectural Coatings -**  
Choose from any Durex Architectural Finish for lasting aesthetics
- **Sealer -**  
Choose either Wall Seal 15 or 25 to protect and prevent dirt build-up

# GDDC EIFS Systems



07 24 00

**Complies with:**

Residential: DB - Dual Barrier EIFS  
 D - Drained EIFS  
 Non Combustible cladding

CCMC Evaluation # 13103-R  
 CAN / ULC S101 - M89  
 CAN / ULC S114 - M85

**MOISTURE / AIR BARRIER**

**REFERENCE PAGE 164**

ITEM #	ITEM NAME	PACKAGING	COVERAGE
010300 / 010300B	Durex Flexcrete	30 kg/pail	200 ft <sup>2</sup> /1 pail mix @ 1.5 mm thick
170201	Durex 040 Fiberglass mesh (Standard 4 oz)	38 inch/ roll	38" x 150 fl rolls (475 ft <sup>2</sup> /roll)

**TRANSITION MEMBRANE**

**REFERENCE PAGE 167**

ITEM #	ITEM NAME	PACKAGING	COVERAGE
180701	4" Primerless EIFS Tape	12 rolls/box	75 ln.ft/roll

**INSULATION ADHESIVE**

**REFERENCE PAGE 144**

ITEM #	ITEM NAME	PACKAGING	COVERAGE
010300	Durex Flexcrete	30 kg/pail	120-140 ft <sup>2</sup> /pail in vertical channels
010300B	Durex Flexcrete "B"	22.7 kg/bag	Use 1/2" x 1/2" notched trowel

**RIGID INSULATION BOARDS**

**REFERENCE PAGE 154**

ITEM #	ITEM NAME	PACKAGING	COVERAGE
110600	Quantum Select EPS Boards	8 ft <sup>2</sup> /board	2' x 4' Boards (typical bundle 480 BF)
110100S	Quantum Select Boundray Boards	8 fl/board	8" x 96" EPS Insulation Boards
110600S	Quantum Starter Vent Boards	8 fl/board	8" x 8' pre-wrapped & pre-coated boards

**REINFORCING MESH**

**REFERENCE PAGE 148**

ITEM #	ITEM NAME	PACKAGING	COVERAGE
170201	Durex 040 Fiberglass mesh (Standard 4 oz)	38 inch/roll	38" x 150 lf rolls (475ft <sup>2</sup> /roll)
170401	Detail mesh 9-1/2" (Standard 4 oz)	9-1/2 inch/roll	9-1/2 x 150 lf rolls (150ft <sup>2</sup> /roll)

**BASE COAT**

**REFERENCE PAGE 143**

ITEM #	ITEM NAME	PACKAGING	COVERAGE
010302	Durex Uniplast	22.7 kg/bag	60 ft <sup>2</sup> /bag mix @ 3mm thickness
010213	Durex Acrybond 'S'	18.9 L/pail	

**ARCHITECTURAL COATINGS PRIMER**

**REFERENCE PAGE 46**

ITEM #	ITEM NAME	PACKAGING	COVERAGE
010101	Brush Coat Primer	25 kg/pail	700 ft <sup>2</sup> /1pail (70 m <sup>2</sup> /pail/coat)

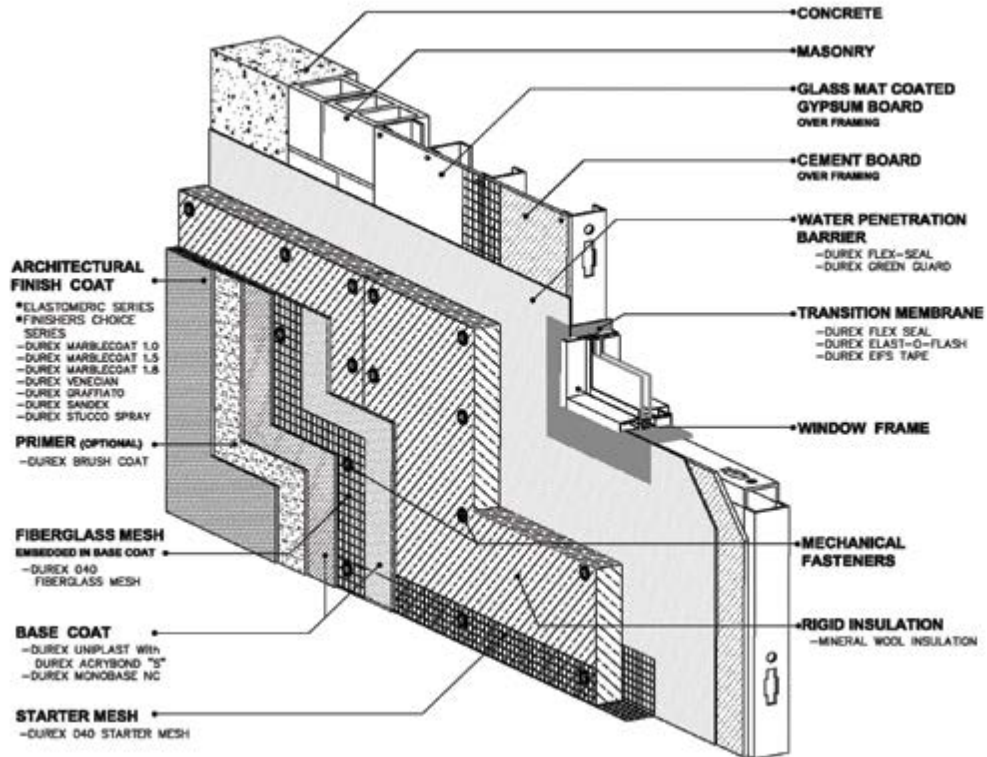
**ARCHITECTURAL FINISH COAT**

**REFERENCE PAGE 112**

ITEM #	ITEM NAME	PACKAGING	COVERAGE
	Classic Finishes	30 kg/pail	Refer to page 112
	Specialty Finishes	30 kg/pail	Refer to page 117

## Durex Equalite

Pressure Equalized, Dual-Barrier, Non-Combustible, Drained EIFS



### Description

Durex Equalite is a pressure equalized exterior insulation and finish system. The system, which has been independently tested, consists of a membrane air/vapour barrier, mineral wool insulation, insulation adhesive and mechanical fasteners, glass fiber reinforcing mesh, continuous vent strips, base coats, and a finish texture coat selected from any one of the available Durex Architectural Coatings.

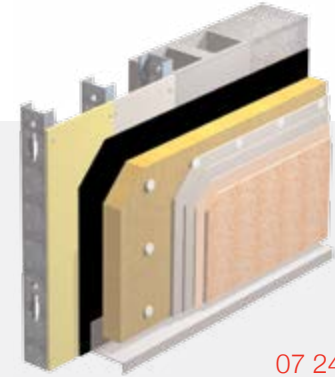
### Advantages

- Completely Non-Combustible Cladding
- Fire Resistant (approved for use when in close proximity to property lines)
- Pressure Equalized
- Continuous Thermal Barrier

### Options

- **Air Barrier** - Refer to page 166 for options (design will dictate type of barrier required)
- **Attachment** - Durex mechanical fasteners (type of substrate and design will dictate type of attachment)
- **Insulation** - Minimum thickness 2" (37 mm)
- **Fibermesh Reinforcing** - Depending on impact resistance required substitute with appropriate Durex fiberglass mesh

## Traditional EIFS Systems



07 24 00

**Complies with:**

Residential: DB - Dual Barrier EIFS  
PE - Pressure equalized  
non-combustible system

CAN / ULC S101 - M89  
CAN / ULC S114 - M85  
CCMC Evaluation Report No 13103-R

**MOISTURE / AIR BARRIER**

**REFERENCE PAGE 166**

ITEM #	ITEM NAME	PACKAGING	COVERAGE
180300	Durex Flexseal	83.3 fl/roll	250 ft²/roll
180300B	Durex Flexseal Primer	20 L/pail	-

**TRANSITION MEMBRANE**

**REFERENCE PAGE 167**

ITEM #	ITEM NAME	PACKAGING	COVERAGE
180701	4" Primerless EIFS Tape	12 rolls/box	75 ln.ft/roll

**INSULATION FASTENERS**

**REFERENCE PAGE 187**

ITEM #	ITEM NAME	PACKAGING	COVERAGE
220406	Scru- It Anchors	100 pc/box	Allow for minimum of 1.25 anchors per ft²
260203	WDP Plates	1000 pc/box	Allow for 1 plate per fastener required

**RIGID INSULATION BOARDS**

**REFERENCE PAGE 159**

ITEM #	ITEM NAME	PACKAGING	COVERAGE
110400	Rigid Mineral Fiber Insulation	8 ft²/board 2' x 4' Boards	(Typical bundle 96 BF) min.2" (50mm)

**REINFORCING MESH**

**REFERENCE PAGE 149**

ITEM #	ITEM NAME	PACKAGING	COVERAGE
170201	Durex 040 Fiberglass mesh (Standard 4 oz)	38 inch/roll	38" x 150 fl rolls (475ft²/roll)
170401	Detail mesh 9-1/2" (Standard 4 oz)	9-1/2 inch/roll	9-1/2 x 150 fl rolls (150ft²/roll)

**BASE COAT**

**REFERENCE PAGE 143**

ITEM #	ITEM NAME	PACKAGING	COVERAGE
010302	Durex Uniplast	22.7 kg/bag	60 ft²/bag mix @ 3 mm thickness
010213	Durex Acrybond "S"	18.9 L/pail	

**ARCHITECTURAL COATINGS PRIMER**

**REFERENCE PAGE 46**

ITEM #	ITEM NAME	PACKAGING	COVERAGE
010101	Brush Coat Primer	25 kg/pail	700 ft²/1 pail (70 m²/pail/coat)

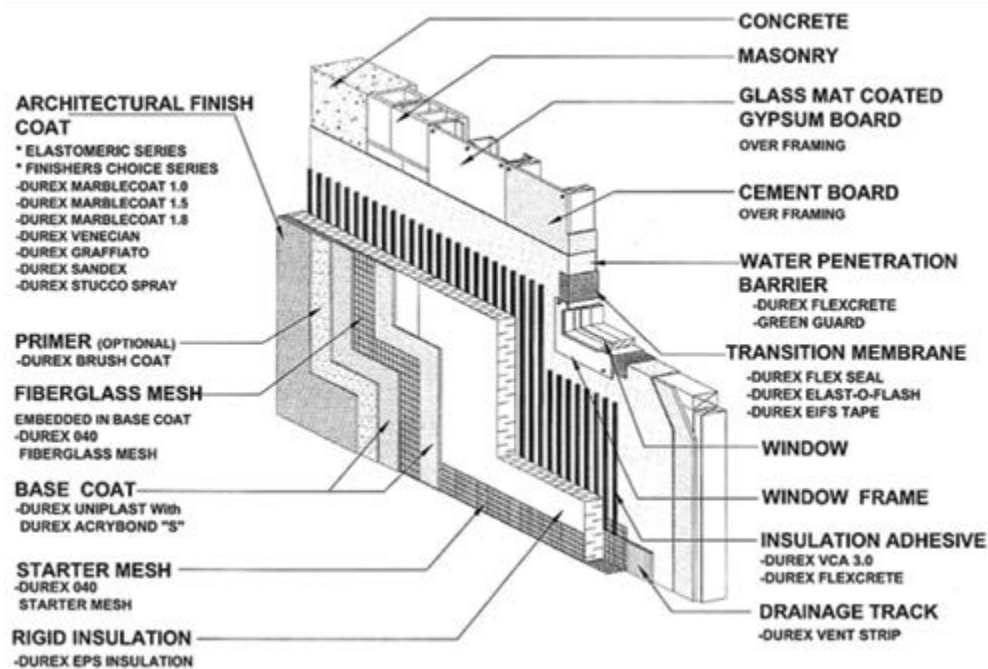
**ARCHITECTURAL FINISH COAT**

**REFERENCE PAGE 112**

ITEM #	ITEM NAME	PACKAGING	COVERAGE
	Classic Finishes	30 kg/pail	Refer to page 112
	Specialty Finishes	30 kg/pail	Refer to page 117

## Durex Insulite EW-17

Moisture Managed EIFS (Chemically Adhered)  
Commercial/Institutional/High-Rise



### Description

Durex Insulite EW17 is a chemically bonded commercial quality EIFS system. Rated "Non- Combustible Cladding" ULC design # EW17. Meets Building code requirements for non-combustible cladding for noncombustible construction. "Commercial quality cost effective EIFS system."

### Advantages

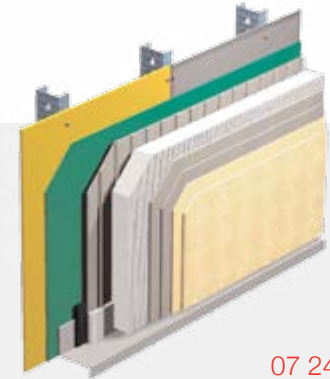
Its unique characteristics include very flexible base coat which is tolerant to cold temperature applications. It is a versatile system that can incorporate various types of moisture barriers available on the market.

### Options

- **Air/Vapour Moisture Barrier -**  
Refer to page 162  
(design will dictate type of barrier required)
- **Attachment -**  
Durex Flexcrete / Durex Monobase / Durex VCA 3.0  
(type of substrate and design will dictate type of attachment)
- **Insulation -**  
Minimum thickness 2" (50 mm) channeled vertically @ 12" (300 mm) o.c.
- **Fibermesh Reinforcing -**  
Depending on impact resistance required substitute with appropriate Durex fiberglass mesh
- **Base Coat -**  
Conditional on project specification requirements, may substitute Durex Uniplast with Durex Monobase



## Traditional EIFS Systems



07 24 00

**Complies with:**

Residential: DB - Dual Barrier EIFS  
Non Combustible cladding

CCMC Evaluation # 13103-R  
CAN / ULC S101 - M89  
CAN / ULC S114 - M

**MOISTURE / AIR BARRIER**

**REFERENCE PAGE 164**

ITEM #	ITEM NAME	PACKAGING	COVERAGE
010300	Durex Flexcrete	30 kg/pail	200 ft²/1 pail mix @ 1.5 mm thick
010300B	Durex Flexcrete "B"	22.7 kg/bag	-

**TRANSITION MEMBRANE**

**REFERENCE PAGE 167**

ITEM #	ITEM NAME	PACKAGING	COVERAGE
180701	4" Primerless EIFS Tape	12 rolls/box	75 ln.ft/roll

**VERTICAL CHanneled ADHESIVE**

**REFERENCE PAGE 142**

ITEM #	ITEM NAME	PACKAGING	COVERAGE
010300VCA	Durex VCA 3.0 Part A	30 kg/pail	120–140 ft²/pail in vertical channels
010300VCAB	Durex VCA 3.0 Part B	22.7 kg/bag	use 1/2" x 1/2" notched trowel

**RIGID INSULATION BOARDS**

**REFERENCE PAGE 154**

ITEM #	ITEM NAME	PACKAGING	COVERAGE
110100	EPS Boards	8 ft²/board	2' x 4' Boards (typical bundle 480 BF)

**REINFORCING MESH**

**REFERENCE PAGE 148**

ITEM #	ITEM NAME	PACKAGING	COVERAGE
170201	Durex 040 Fiberglass mesh (Standard 4 oz)	38 inch/roll	38" x 150 lf rolls (475ft²/roll)
170401	Detail mesh 9-1/2" (Standard 4 oz)	9-1/2 inch/roll	9-1/2 x 150 lf rolls (150ft²/roll)

**BASE COAT**

**REFERENCE PAGE 143**

ITEM #	ITEM NAME	PACKAGING	COVERAGE
010302	Durex Uniplast	22.7 kg/bag	60 ft²/bag mix @ 3mm thickness
010213	Durex Acrybond 'S'	18.9 L/pail	

**ARCHITECTURAL COATINGS PRIMER**

**REFERENCE PAGE 46**

ITEM #	ITEM NAME	PACKAGING	COVERAGE
010101	Brush Coat Primer	25 kg/pail	700 ft²/1 pail (70 m²/pail/coat)

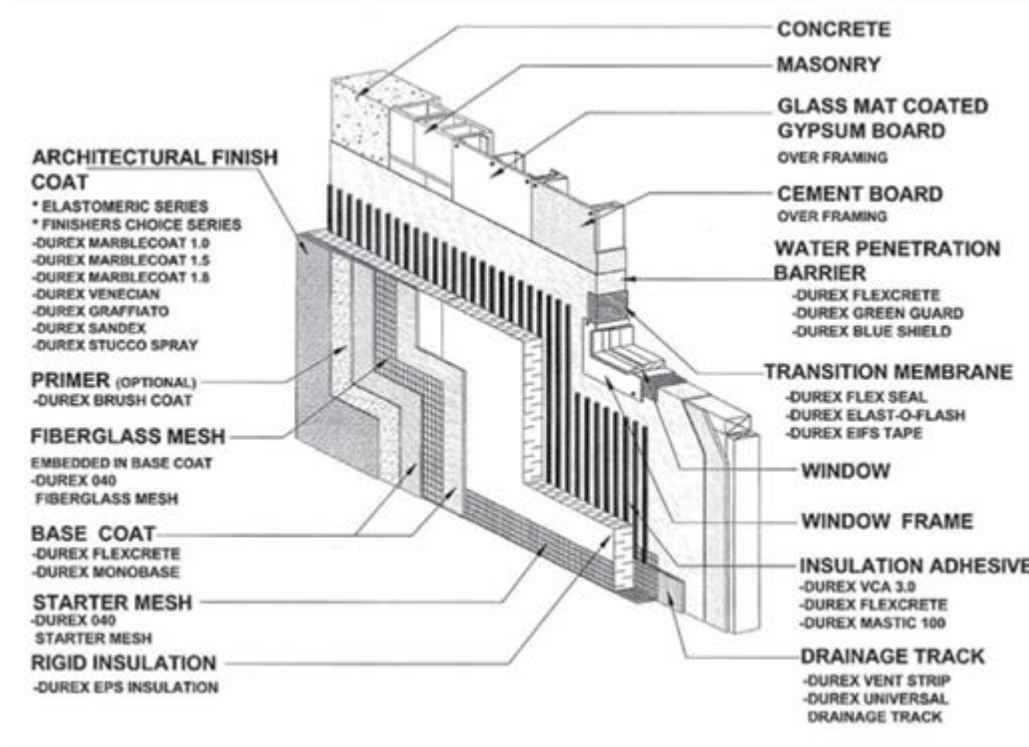
**ARCHITECTURAL FINISH COAT**

**REFERENCE PAGE 112**

ITEM #	ITEM NAME	PACKAGING	COVERAGE
	Classic Finishes	30 kg/pail	Refer to page 112
	Specialty Finishes	30 kg/pail	Refer to page 117

## Durex Flexlite ADH

Moisture Managed EIFS (Chemically Adhered)  
Residential



### Description

Durex Flexlite ADH is a moisture managed Exterior Insulated Finishing System for residential applications. CCMC approved over wood and other types of substrates. Low rise, chemically adhered, dual barrier drained EIFS.

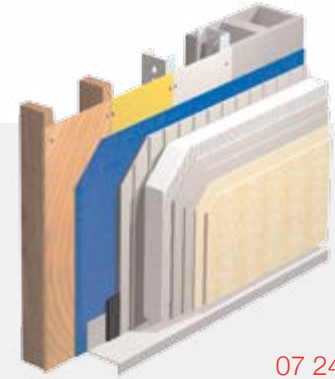
### Advantages

- Flexlite Select ADH is a versatile, CCMC Approved, dual barrier, drained, residential Exterior Insulation Finishing System
- It is a quality, cost effective cladding for low-rise residential dwellings
- Insulation is installed using a Vertical Channeled Adhesive, which provides positive drainage of any incidental moisture within the wall cavity.
- Protects interior wall components from deterioration due to moisture infiltration
- Effective as an over-clad over brick/ block to reface and rejuvenate older homes

### Options

- **Air/Vapour Moisture Barrier -** Durex Flexcrete / Durex Mastic 100 / Durex Green Guard / Durex Blueshield (design will dictate type of barrier required)
- **Attachment -** Durex Flexcrete and Flexcrete B (type of substrate and design will dictate type of attachment)
- **Insulation -** Minimum thickness 1-1/2" (37 mm)
- **Fibermesh Reinforcing -** Depending on impact resistance required substitute with appropriate Durex fiberglass mesh
- **Base Coat -** May substitute Durex Flexcrete with Monobase or Uniplast + Acrybond 'S'

## Traditional EIFS Systems



07 24 00

**Complies with:**

Residential: DB - Dual Barrier EIFS  
CCMC Evaluation Report No 13103-R

**MOISTURE / AIR BARRIER**

**REFERENCE PAGE 162**

ITEM #	ITEM NAME	PACKAGING	COVERAGE
180403	Blue Shield	18.9 L/pail	250 ft <sup>2</sup> /pail @ 1 mm thick

**TRANSITION MEMBRANE**

**REFERENCE PAGE 167**

ITEM #	ITEM NAME	PACKAGING	COVERAGE
180701	4" Primerless EIFS Tape	12 rolls/box	75 ln.ft/roll

**VERTICAL CHANNELED ADHESIVE**

**REFERENCE PAGE 142**

ITEM #	ITEM NAME	PACKAGING	COVERAGE
010300VCA	Durex VCA 3.0 Part A	30 kg/pail	120–140 ft <sup>2</sup> /pail in vertical channels
010300VCAB	Durex VCA 3.0 Part B	22.7 kg/bag	use 1/2" x 1/2" notched trowel

**RIGID INSULATION BOARDS**

**REFERENCE PAGE 154**

ITEM #	ITEM NAME	PACKAGING	COVERAGE
110100	EPS Boards	8 ft <sup>2</sup> /board	2' x 4' Boards (typical bundle 480 BF)
180511	Durex Drainage Vents	4 ft/strip	4' x 2" Drainage vent strip( 2,4,6,8,10 & 12 mm)
180521	Durex Universal Drainage Strip (optional)	8 ft/strip	10" Starter strip (one size fits all, min. 1" EPS)

**REINFORCING MESH**

**REFERENCE PAGE 149**

ITEM #	ITEM NAME	PACKAGING	COVERAGE
170201	Durex 040 Fiberglass mesh (Standard 4 oz)	38 inch/roll	38" x 150 lf rolls (475ft <sup>2</sup> /roll)
170401	Detail mesh 9-1/2" (Standard 4 oz)	9-1/2 inch/roll	9-1/2 x 150 lf rolls (150ft <sup>2</sup> /roll)

**BASE COAT**

**REFERENCE PAGE 143**

ITEM #	ITEM NAME	PACKAGING	COVERAGE
010300	Durex Flexcrete	30 kg/pail	100 ft <sup>2</sup> /bag mix @ 1/8" thickness
010300B	Durex Flexcrete "B"	22.7 kg/bag	-

**ARCHITECTURAL COATINGS PRIMER**

**REFERENCE PAGE 46**

ITEM #	ITEM NAME	PACKAGING	COVERAGE
010101	Brush Coat Primer	25 kg/pail	700 ft <sup>2</sup> /1 pail (70 m <sup>2</sup> /pail/coat)

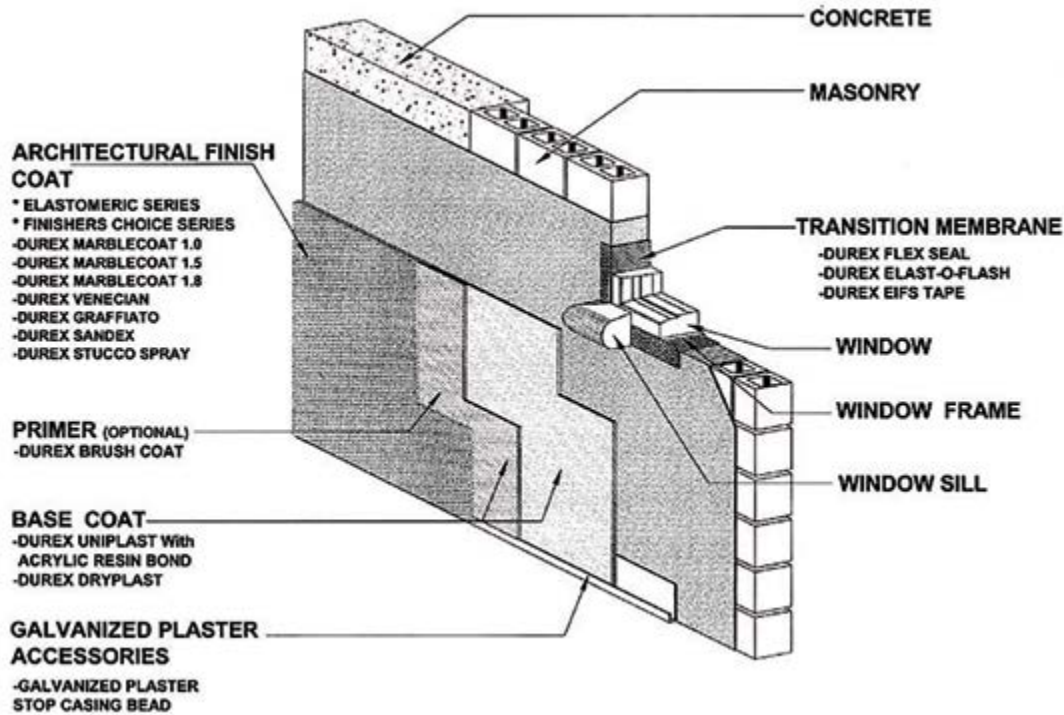
**ARCHITECTURAL FINISH COAT**

**REFERENCE PAGE 112**

ITEM #	ITEM NAME	PACKAGING	COVERAGE
	Classic Finishes	30 kg/pail	Refer to page 112
	Specialty Finishes	30 kg/pail	Refer to page 117

## Durex Lite Coat

Direct Applied Stucco System



### Description

DUREX LITE COAT is a non-insulated wall coating system. The system consists of scratch and base coats and a finish texture coat which can be selected from any one of the available Durex Architectural Coatings.

As an option the scratch coat can be reinforced with synthetic fibers.

### Options

- **Patching Compound -**  
Substrate patching compound shall be Durex Dur-A-Patch mixed in strict accordance with Durabond's printed instructions
- **Trim / Accessories -**  
All trim, expansion and control joints, casing beads and corner beads shall be vinyl extrusions with a minimum ground of 6.4 mm (1/4")
- **Scratch Coat & Base Coat -**  
Both scratch coat and base coat shall be Durex Dryplast Medium mixed with potable water in strict accordance with Durabond's printed instructions
- **Note -**  
Reinforcing mesh required for masonry work only
- **Note -**  
Generally scratch coat required on masonry walls only. Check with Durabond Products Limited for use of scratch coat on concrete surfaces. Throughout this Specification, if the Durex "Lite Coat" is to be applied over an acceptable concrete surface, delete reference to "Scratch Coat."
- **Detail Reinforcing Fabric -**  
Standard duty, open weave glass fiber mesh weighing 152 gms/m<sup>2</sup> (4.5 oz/yd). Durex 040 detail mesh in 25 cm x 50 m (9" x 150') rolls
- **Primer Coat -**  
Primer Coat - shall be Durex Brush Coat colour number; same colour number as Durex Finish Coat

## Direct Applied Stucco Systems

Direct applied stucco system  
Over sound masonry/concrete surfaces



09 24 00

### BASE COAT

REFERENCE PAGE 173

ITEM #	ITEM NAME	PACKAGING	COVERAGE
010341	Durex Dryplast Coarse	22.7 kg/bag	18 ft <sup>2</sup> /bag mix @ 3/8" thickness (10 mm thick) Mix 1 Bag Dryplast to 4-5L of water
010302	Durex Uniplast	22.7 kg/bag	50 ft <sup>2</sup> /bag mix @ 3.2 mm thickness
010207	Acrylic Resin Bond	20 kg/pail Mix	1 Bag Uniplast to 5L of Acrylic Resin Bond

### TRIM & EXPANSION JOINTS

REFERENCE PAGE 178

ITEM #	ITEM NAME	PACKAGING	COVERAGE
	See Specifications.		

### ARCHITECTURAL COATINGS PRIMER

REFERENCE PAGE 46

ITEM #	ITEM NAME	PACKAGING	COVERAGE
010101	Brush Coat Primer	25 kg/pail	700 ft <sup>2</sup> /1pail (70 m <sup>2</sup> /pail/coat)

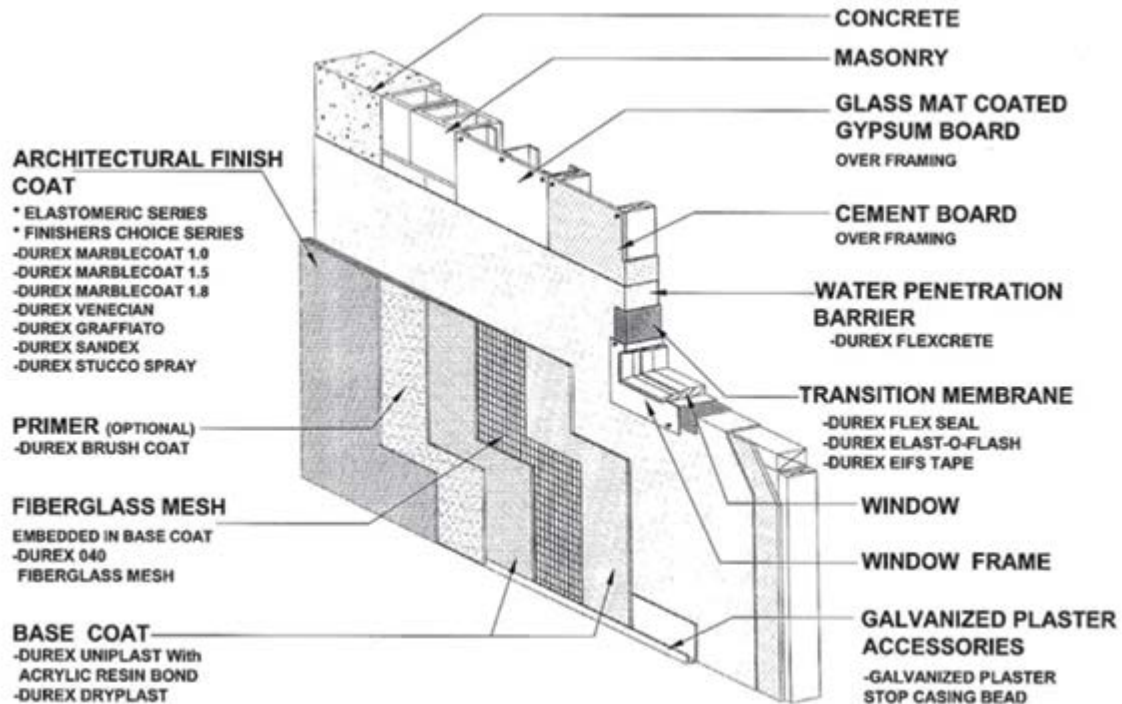
### ARCHITECTURAL FINISH COAT

REFERENCE PAGE 112

ITEM #	ITEM NAME	PACKAGING	COVERAGE
	Classic Finishes	30 kg/pail	Refer to page 112
	Specialty Finishes	30 kg/pail	Refer to page 117

## Durex Stucco Lite

Fiberglass Reinforced (Direct Applied) System



### Description

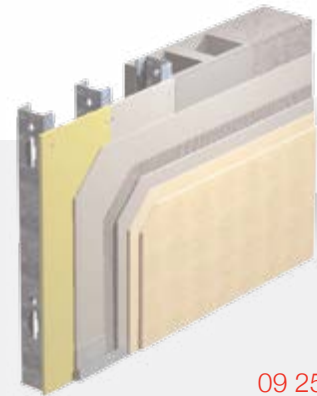
Durex Stucco Lite is a non-insulated wall coating system. The system consists of a glass fiber reinforcing mesh, trim accessories, scratch and base coats, and a finish texture coat which can be selected from any one of the available Durex Architectural Coatings.

### Options

- **Standard Reinforcing Mesh -**  
Standard reinforcing mesh shall be Durex 040 Fiberglass mesh in 1 m x 50 m rolls, or Durex adhesive back mesh in 1 m x 50 m rolls
- **High Impact Mesh -**  
Heavy reinforcing mesh shall be Durex 323 High Impact mesh in 1 m x 25 m rolls
- **Trim Accessories -**  
All trim, expansion and control joints, casing beads and corner beads shall be vinyl with a minimum ground of 6 mm (1/4")
- **Scratch Coat & Base Coat -**  
Both scratch coat and base coat shall be Durex Flexcrete and Durex Flexcrete "B" mixed at a ratio of Durex Flexcrete 1 pail to Durex Flexcrete "B" 4 parts
- **Finish Primer Coat -**  
Primer coat shall be Durex Brush Coat colour number. Durex Brush Coat shall be the same colour as the Durex Architectural Coating finish
- **Finish Coat -**  
Finish coat shall be DUREX Architectural Coating Colour number
- **Sealant -**  
Low modulus sealant as recommended and approved by Durabond Products Limited
- **Surface Sealer (Optional) -**  
Surface sealer shall be Durex Wall Seal 15 manufactured by Durabond Products Limited

## Direct Applied Stucco Systems

Direct applied stucco system



09 25 00

### MOISTURE / AIR BARRIER

REFERENCE PAGE 166

ITEM #	ITEM NAME	PACKAGING	COVERAGE
010300	Durex Flexcrete	30kg/pail	200ft²/1 pail mix @ 1.5mm thick
010300B	Durex Flexcrete "B"	22.7kg/bag	-

### REINFORCING MESH

REFERENCE PAGE 149

ITEM #	ITEM NAME	PACKAGING	COVERAGE
170201	Durex 040 Fiberglass mesh (Standard 4 oz)	38 inch/roll	38" x 150 fl rolls (475ft²/roll)
170401	Detail mesh 9-1/2" (Standard 4 oz)	9-1/2 inch/roll	9-1/2 x 150 fl rolls (150ft²/roll)

### BASE COAT

REFERENCE PAGE 142

ITEM #	ITEM NAME	PACKAGING	COVERAGE
010300	Durex Flexcrete	30kg/pail	200ft²/1 pail mix @ 1.5mm thick
010300B	Durex Flexcrete "B"	22.7kg/bag	-
010302	Durex Uniplast	22.7 kg/bag	50 ft² /bag mix @ 3mm thickness
010207	Durex Resin Bond	20 kg/pail	-

### ARCHITECTURAL COATINGS PRIMER

REFERENCE PAGE 46

ITEM #	ITEM NAME	PACKAGING	COVERAGE
010101	Brush Coat Primer	25 kg/pail	700 ft²/1pail (70 m²/pail/coat)

### ARCHITECTURAL FINISH COAT

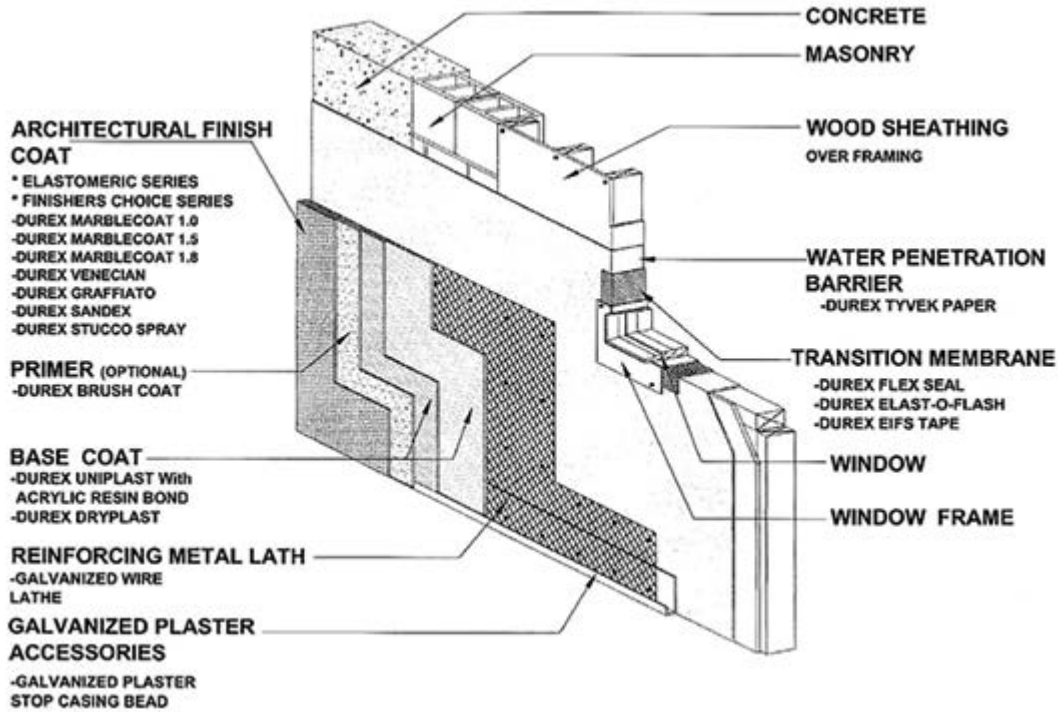
REFERENCE PAGE 112

ITEM #	ITEM NAME	PACKAGING	COVERAGE
	Classic Finishes	30 kg/pail	Refer to page 112
	Specialty Finishes	30 kg/pail	Refer to page 117

**Disclaimer:** Check with local building authorities for permanent structure compliance

## Durex Stucco Wall

Metal Reinforced (Mechanically Fastened) Stucco Wall System



### Description

Durex Stucco Wall is a mechanically fastened stucco system. Rated Non-Combustible Cladding meets Building Code requirements for non-combustible cladding for non-combustible construction.

### Advantages

Traditional style stucco system. Fully mechanical fastened system. Ready mixed base coat for speed, economy and assured quality control.

- Complies with National Building Code (Section 9.28)
- High Impact Resistance
- Non-combustible

### Options

- **Attachment -**  
Select appropriate Durex mechanical fasteners in accordance with the type of substrate (type of substrate and design will dictate type of attachment)
- **Ground -**  
Minimum thickness of system to be 3/8". Most common thickness used is 1/2" with option to increase up to 1" thick base coat
- **Reinforced Mesh -**  
Most common mesh used is "Diamond" type 2.5 lbs / SY, but can be substituted with 3.4 lbs / SF Diamond or "Rib Lath."
- **Base Coat -**  
Durex Dryplast with Durex Uniplast or traditional "Sand & Cement. Mix with Durex Acrybond Concentrate (refer to specs for recommendations)



## Direct Applied Stucco Systems



**Complies with:**

Ontario Building Code - Section 9.28

09 24 00

**MOISTURE / AIR BARRIER**

**REFERENCE PAGE 170**

ITEM #	ITEM NAME	PACKAGING	COVERAGE
180202	Tyvek	900 ft <sup>2</sup> /roll	9' x 100'/roll Air/Moisture Barrier
180251	Tyvek Tape	200 lf/roll	2-1/2" x 200'/roll
180511	Drainage Mat (Optional) Benjamin Obdyke Slicker Max 10mm	Roll	125 SF/roll

**METAL LATH FASTENERS**

**REFERENCE PAGE 188**

ITEM #	ITEM NAME	PACKAGING	COVERAGE
220501	U-Drive Anchors	1-1/8" 100pc/box	Allow for minimum of 1.25 anchors per ft <sup>2</sup>

**TRIM & EXTENSION JOINTS**

**REFERENCE PAGE 178**

ITEM #	ITEM NAME	PACKAGING	COVERAGE
	See specifications.		

**REINFORCING METAL LATH**

**REFERENCE PAGE 177**

ITEM #	ITEM NAME	PACKAGING	COVERAGE
150602	Galvanized Metal Lath	2.5 lbs/SY	each bundle 10 sheets/bundle (160 ft <sup>2</sup> /bundle)

**BASE COAT**

**REFERENCE PAGE 173**

ITEM #	ITEM NAME	PACKAGING	COVERAGE
010341	Durex Dryplast Coarse	22.7 kg/bag	18 ft <sup>2</sup> /bag mix @ 3/8" thickness (10 mm thick) Mix 1 bag Dryplast to 4-5 L of water

**ARCHITECTURAL COATINGS PRIMER**

**REFERENCE PAGE 46**

ITEM #	ITEM NAME	PACKAGING	COVERAGE
010101	Brush Coat Primer	25 kg/pail	700 ft <sup>2</sup> /1pail (70 m <sup>2</sup> /pail/coat)

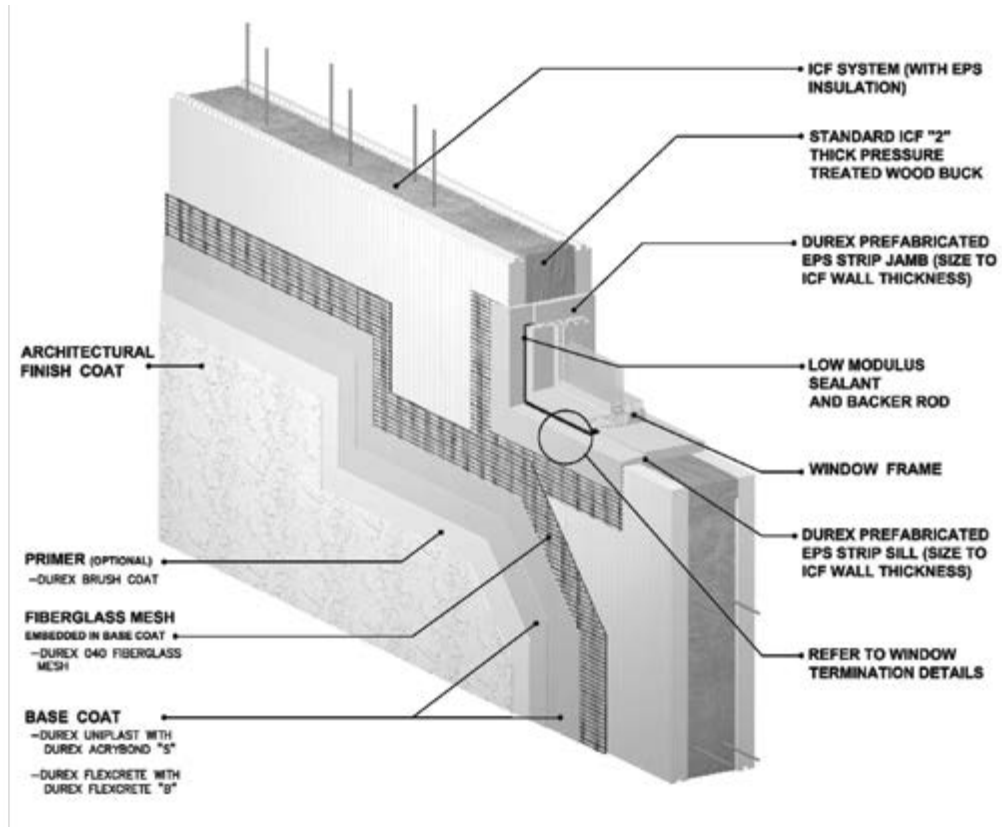
**ARCHITECTURAL FINISH COAT**

**REFERENCE PAGE 112**

ITEM #	ITEM NAME	PACKAGING	COVERAGE
	Classic Finishes	30 kg/pail	Refer to page 112
	Specialty Finishes	30 kg/pail	Refer to page 117

## Durex ICF Coating

Polymer Based Cementitious Coating System



### Description

Durex ICF Coating System NC is rated non-combustible cladding with high impact resistance. Meets Building code requirements for non-combustible cladding for non-combustible construction. "Ideal cladding system for commercial type buildings."

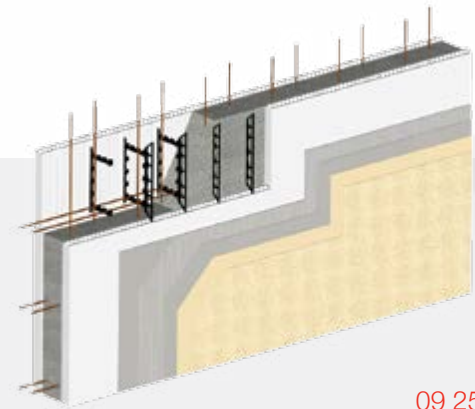
### Advantages

- Economical
- Easy to install
- Impact Resistant (when used in conjunction with High-Impact Mesh)
- Versatile
- Extremely flexible

### Options

- **Fibermesh Reinforcing** - Depending on impact resistance required substitute with appropriate Durex fiberglass mesh
- **Base Coat** - Conditional on project specification requirements, may substitute Durex Flexcrete with Durex Monobase

## Direct Applied Stucco Systems



**Complies with:**

Non-Combustible System  
ULC EW22

09 25 00

**MOISTURE / AIR BARRIER**

**REFERENCE PAGE 28**

ITEM #	ITEM NAME	PACKAGING	COVERAGE
180302A	Durex Dur-O-Lastic	83.3 ft/roll	200 ft <sup>2</sup> /roll
180302	Durex Flexseal Surface Conditioner	20 L/pail	1500–1750 ft <sup>2</sup> /pail (one coat)
180411A	Durex Ectoflex “part A”	10 L/jug	130–150 ft <sup>2</sup> /unit @ 1/16” thick
180411B	Durex Ectoflex “part B”	22.7 kg/bag	-

**INTERIOR COATING SYSTEM**

**REFERENCE PAGE 174**

ITEM #	ITEM NAME	PACKAGING	COVERAGE
010322	Durex Uniplast White	22.7 kg/bag	50 ft <sup>2</sup> /bag mix @ 1/8” thickness (3.2 mm thick)
010213	Durex Acrybond “S”	20 L pail	-
010371	Durex Monofino Texture System	22.7 kg/bag	75–125 ft <sup>2</sup> /bag (depending desired texture)

**REINFORCING MESH**

**REFERENCE PAGE 149**

ITEM #	ITEM NAME	PACKAGING	COVERAGE
170201	Durex 040 Fiberglass mesh (Standard 4 oz)	38 inch/roll	38” x 150 lf rolls (475ft <sup>2</sup> /roll)
170401	Detail mesh 9-1/2” (Standard 4 oz)	9-1/2 inch/roll	9-1/2 x 150 lf rolls (150ft <sup>2</sup> /roll)

**BASE COAT**

**REFERENCE PAGE 143**

ITEM #	ITEM NAME	PACKAGING	COVERAGE
010302	Durex Uniplast	22.7 kg/bag	60 ft <sup>2</sup> /bag mix @ 3mm thickness
010213	Durex Acrybond “S”	20 L/pail	-

**ARCHITECTURAL COATINGS PRIMER**

**REFERENCE PAGE 46**

ITEM #	ITEM NAME	PACKAGING	COVERAGE
010101	Brush Coat Primer	25 kg/pail	700 ft <sup>2</sup> /1pail (70 m <sup>2</sup> /pail/coat)

**ARCHITECTURAL FINISH COAT**

**REFERENCE PAGE 112**

ITEM #	ITEM NAME	PACKAGING	COVERAGE
	Classic Finishes	30 kg/pail	Refer to page 112
	Specialty Finishes	30 kg/pail	Refer to page 117

**Concrete & Masonry Restoration**

- Concrete Mix Design Charts
- Durex Dur-A-Patch
- Durex Dryplast
- Durex Dryplast Concentrate
- Durex Uniplast & Acrylic Resin Bond
- Durex Flexcrete
- Durex Ectoflex
- Durex Dur-A-Top 15 Self Leveling Cement
- Durex Sand Mix
- Portland Cement
- Tremco Dymonic 100
- Tremco Vulkem 45 SSL
- Durex EMC Knife Grade
- Durex Acrybond Concentrate
- Acrylic Resin Bond
- Dur-A-Patch Liquid Additive
- Durex Cement Bond
- Durex Acrybond 'S'
- Durex AR Grade 1" Grid Concrete Reinforcing Mesh
- Durex E-Grade 1½" Grid Concrete Reinforcing Mesh (AR Coated)
- Durex Fiberglass Reinforcing Mesh
- Concrete Restoration Guide
- Masonry Restoration Guide

**Moisture Protection**

- Durex Flexcrete
- Durex Blue Shield
- Durex Dur-A-Mastic 100
- Durex Green Guard Plus
- Durex Ectoflex
- Durex Barrier Seam Tape
- Durex Flex Seal
- Durex Flex Seal VP
- Durex Dur-O-Lastic
- Durex Ectoflex
- Super Stick Building Tape
- Durex Flex-Seal Wall Flashing Tape
- Durex Flex-Seal Red Primer
- Durex Durathane B500
- Durex Uraflex 360/375UV
- Durex Acrotel SB
- Durex Uraflex Traffic Bearing Waterproofing System
- Durex Mechanical Room Waterproofing System
- Durex Garbage Room Waterproofing System
- Durex Uraflex 360
- Durex Uraflex 361
- Durex Uraflex 375 UV

**Protective Coatings & Sealers**

- Durex Brush Coat
- Acrotel EC-A
- Durex Ecto-Sil 1000

- Durex EMC
- Durex EMC Knife Grade
- Durex Roltex
- Durex Dur-X-Cel 100
- Durex Dur-X-Cel Primer
- Durex Acrotel SB Non-Porous Primer
- Durex Durathane 90
- Durex Epotel Anti-Corrosion Metal Primer
- Durex Epotel WB DTM
- Durex TBC
- Durex Acrotel SB Metal Primer
- Durex Acrotel DTM
- Durex Acrotel SB Primer
- Durex Acrotel SB Metal
- Durex Wall Seal
- Durex Dur-A-Seal A28
- Durex Dur-A-Seal A.G.
- Durex Dur-A-Seal XL 250
- Durex Acrotel SB Floor Grade
- Durex Concrete Sealer WB 18/25
- Durex Epotel 80
- Durex Diamond LOK
- Durex Silane WRS 40/100

**Floor Coatings**

- Durex Epotel 100 GSC
- Durex Epotel 100 GSC Rapid Cure
- Durex Epotel 100 GSA
- Durex Uraflex 100
- Durex Uraflex 100 OP
- Durex Epoxy Guard Pro
- Durex Epotel 100 UR
- Durex Epotel 100 Novolac
- Durex Epotel 100 CR
- Durex Duracrete Broadcast
- Durex Duracrete Trowel
- Durex Epotel 100 TL
- Durex Duracrete Aggregate
- Durex Uracrete
- Durex Art-I-Stone
- Durex Dur-A-Flake
- Durex Dur-A-Quartz Broadcast
- Durex Dur-A-Quartz Trowel
- Durex Granitech
- Durex Acrutel 50
- Durex Aquathane
- Durex Durathane 90
- Durex Polyuretrel
- Durex Epotel Multi-Prime
- Durex Moisture Block 100
- Durex Uraflex Primer
- Durex Uraflex Citrus Primer

- Durex Epotel 100 Crack Filler
- Durex Anti Slip Aggregates
- Durex Acrotel SB
- Durex TBC
- Durex Epoxy Guard
- Durex Epoxy Guard Pro

**Exterior Wall Systems**

- Durex Flexlite Select
- Durex Quantum Select
- Durex Quantum Select MF
- Durex Quantum 5.0
- Durex Quantum Select ICF
- Durex Equalite
- Durex Insulite EW-17
- Durex Flexlite ADH
- Durex Lite Coat
- Durex Stucco Lite
- Durex Stucco Wall
- Durex ICF Coating

**Architectural Coatings & Decorative Finishes**

- Durex Marble Coat 1.5
- Durex Marble Coat 1.0
- Durex Venecian
- Pebble Float
- Durex Sandex
- Durex Trim Spray
- Durex Stucco Spray
- Durex Graffiato
- Durex Sandstone
- Durex Rasato
- Durex Rustico
- Durex Antico Glaze
- Durex Trowel Grade Stucco
- Durex Gemstone
- Durex Granite
- Durex Stonetex
- Durex Crystal Coat
- Durex Cromatex
- Durex Aggex
- Durex Rough Cast
- Durex Decorative Stucco Ext
- Durex Monocapa
- Durex Monofino
- Durex Dur-A-Brick
- Durex Brush Coat
- Durex EMC
- Durex Dur-X-Cel 100
- Durex Roltex
- Durex Kolor Gard
- Durex Elastomeric Brush Coat
- Durex Elastomeric Graffiato
- Durex Elastomeric Marble Coat 1.0
- Durex Elastomeric Marble Coat 1.5
- Durex Elastomeric Sandex
- Durex Elastomeric Venecian

- Acroplast Venetian Plaster
- Durex Super Stipple
- Crackle Size Basecoat
- Crackle Stone & Antique Topcoat
- Crackle Glaze
- Coraltex Metallic Hammer Tone
- Scumble Glaze
- Extender Glaze
- Suede Latex
- Metallic Paint
- Luster Plaster (Orystone)
- Acronament (Gesso)
- Durex Texture Spray
- Durex Ceiling Coat
- Durex Plaster Bond Blue & White

### EIFS Stucco & Components

- Durex Uniplast & Durex Acrybond 'S
- Durex Flexcrete'
- Durex Monobase
- Durex VCA 3.0 Insulation Adhesive
- Durex Monofino
- Durex Monocapa
- Durex Pool Marble Finish
- Durex Trim Coat
- Durex Fiberglass Reinforcing Mesh
- Durex Intermediate Mesh
- Durex High Impact Mesh
- Durex Detail Fiberglass Mesh
- Durex Trim Mesh
- Durex Barrier Seam Tape
- Durex Quantum Select
- Durex Quantum 5.0
- Durex Flexlite Select EPS
- Type 1 Eps
- Type 2 Eps
- Type 3 Eps
- Durex Equalite Mineral Fiber Insulation
- Durex Boundary Boards
- Durex Flexlite Select Vent Board
- Durex Quantum Select Vent Boards
- Durex Dur-A-Mastic 100
- Durex Blue Shield
- Durex Flexcrete
- Durex Green Guard Plus
- Durex Ectoflex
- Durex Barrier Seam Tape
- Durex Flex-Seal
- Flex-Seal VP
- Durex Primerless
- Durex Primerless EIFS Tape

- Durex EIFS Tape
- Durex Flex Seal Mastic
- Durex Flex Seal Wall Flashing Tape
- Durex Flex Seal Red Primer
- Durex Drainage Mat
- Durex Drainage Vent
- Durex Drainage Track
- Durex Uni-Flash Drainage Track
- Kick-Out Flashing
- Window Drips
- Starter Strip EIFS Drainage
- Durex Dryplast
- Durex Uniplast & Acrylic Resin Bond
- Durex Flexcrete
- Permabase Cement Board
- Durex Glass Gold
- Stucco & Stone Veneer Drainage Matt
- Mesh Lath / Rib Lath
- Metal Corner Bead
- Metal Expansion Joints
- Metal Plaster Stop / Casing Bead
- Plastic Corner Bead
- Plastic Plaster Stop
- X-66 Expansion Joint
- Soffit Vent
- Tremco Spectrum 3
- Tremco Spectrum 4-TS
- Backer Rod
- Durex Caulked Joint Weepers
- Caulk Guns

### Tools & Accessories

- MJP Anchors
- Steel Fasteners
- Ucan Scru-It Masonry Anchor
- Pin Bolts
- U-Drive - Concrete Nails
- Cement Board Anchors
- Roof Grip Screws
- ULP Plates
- Wind-Devil WDP Plates
- Long-Lock Plates
- SDS Hammer Drill Bit
- Groove Tool Trowel
- Straight Groove Blade
- Portable Hot Groover
- Windlock 2-QC Blue Hot Knife
- Yellow Hot Knife Kits
- Hot Wire Machine Accessories
- V-Groove Sleds
- V-Groove Blades
- Square Groove Reveals
- Square Groove Blades
- Angled Groove Reveals
- Angled Groove Blades
- Beveled Groove Sleds

- Beveled Groove Blades
- Permashape Golden Stainless Steel "Broken In" Trowel
- Permashape High Carbon "Broken In" Trowel
- Permashape Golden Stainless Steel w/ Durasoft Trowel
- Golden Stainless Steel w/ Durasoft Xtralite Trowel
- Swimming Pool Trowel
- Finishing Float
- Inox Stainless Steel Venetian Trowels
- Corner Trowels
- Notched Trowel
- Tuck Trowel
- Margin Trowel
- Featheredges
- Hawks
- Ornament Tools
- Rub Bricks & Accessories
- Bucket Scoops
- Stainless Steel Putty Knives
- Putty Knives
- Knives
- Durarasp
- Tiger Claw Durarasp
- Marshalltown Rasp
- Duravac Heavy Duty Electric Rasp + Shop-Vac Back Pack
- Hopper & Texture Guns
- Spray Foam, Guns & Cleaner
- Mixing Paddles
- Mixing Drills
- Chalk Line
- Staple Guns/Tackers
- Staples
- Measuring Tape/Levels
- Top Quality Brushes
- Medium Quality Brushes
- Roller Cage & Refills
- Fiberglass Pole Extensions
- Paint Trays & Accessories
- Wash Brushes
- Masking & Joint Tape
- Stucco Tape & Specialty Masking Tapes
- Tarp/Polyethylene/Masking
- Window Film Protection Tape
- Kraft Paper
- Squeegees
- Spike Shoes
- Spike Roller
- Flooring Trowels
- Cam Guage Rakes

Durex®

CIRCA 1990



**DURabond** 

## Durabond Products Limited

[www.durabond.com](http://www.durabond.com)

### Head Office - Toronto

55 Underwriters Road  
Scarborough, ON M1R 3B4  
(416) 759 4474

### Mississauga Office

6178 Netherhart Road  
Mississauga, ON L5T 1B7  
1 (905) 565 9283

### Western Canada Office

14345 120th Avenue  
Edmonton, Alberta T5L 2R8  
1 (780) 451 6364

[info@durabond.com](mailto:info@durabond.com)

1 (877) 387 2266