

DURAbond
PRODUCTS LIMITED



Durex® New Generation Textures



Durex® Rustico



The coarse grade of Durex's flat old style finishes, 100% acrylic based architectural wall coatings. Produced in a paste form; resulting in an even satin-like finish on exterior and interior surfaces. A contemporary classic, Rustico is burnished with a steel trowel, adding to the rustic feel of the product. **Application:** Metal Trowel **Coverage:** 140ft²/pail

Durex® Rasato



The medium grade of Durex's flat old style finishes, 100% acrylic based architectural wall coatings. The coating is similar to Rustico, but with slightly smaller aggregates to create a uniform, classic texture. Rasato is a finer finish that replicates the grandeur of classic Europe. **Application:** Steel Trowel **Coverage:** 150ft²/pail

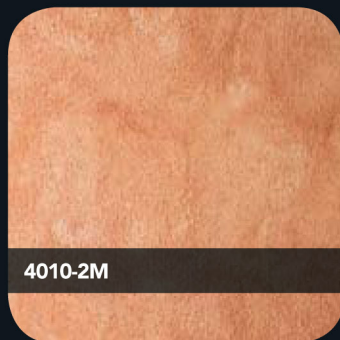
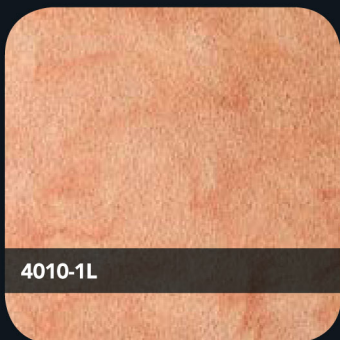
Durex® Sandstone



The fine grade of Durex's flat old style finishes with a modern touch. This flat, acrylic polymer based coating is formulated to emulate the sharp lines of casted concrete and cut limestone. Ideal when applied on finer details and smaller areas when a classic flat-stone look is desired. **Application:** Steel Trowel **Coverage:** 180ft²/pail

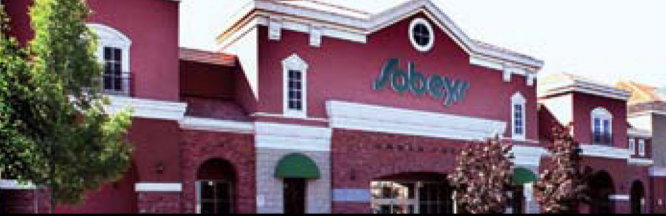
Custom Colour Matching available. Refer to the **Colour Selection** guide or ask your sales representative for more information.

Durex® Antico Glaze



A fine, translucent glaze that simulates a natural aging affect. A durable, acrylic polymer coating formulated for use over all Durex® finishes. Combine with **Rustico** or **Rasato** to achieve a classical, renaissance-era finish. Use tone on tone, or off-tone colouring to obtain a surface with depth and complexity.

Custom Colour Matching available. Refer to the **Colour Selection** guide or ask your sales representative for more information.



Durex® Stonetex



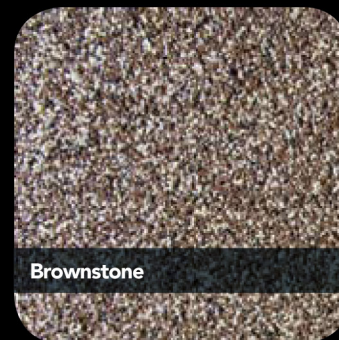
Sand Dune



Stainless Steel



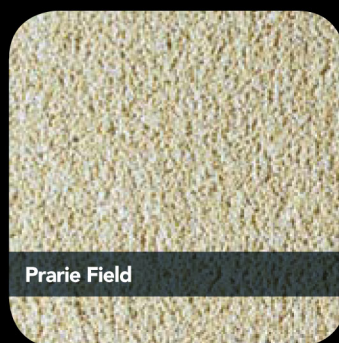
Red Maple



Brownstone



Coal Mine



Prairie Field



Mosaic



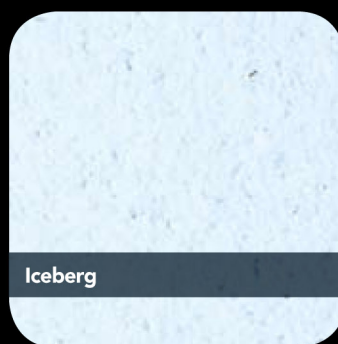
Inuit Sky



Huron Shore



Olde Clay



Iceberg



Stanley Park



Durex® Crystal Coat



Porcelain



Black Gold



Copper



Sapphire



Diamond



Moonstone



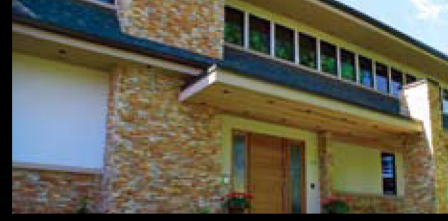
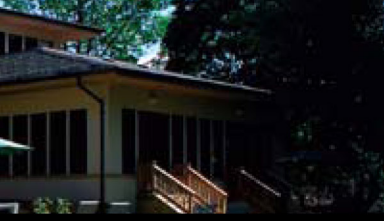
Sterling Silver



Fool's Gold



Onyx



Durex Gemstone



Arctic Night



Nordic Pearl



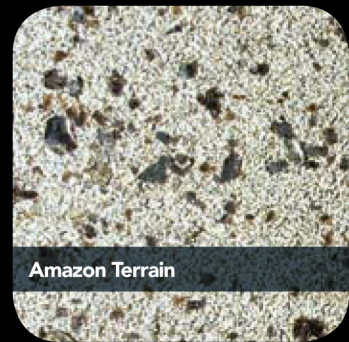
Dolomite White



Tuscan Heights



Georgian Granite



Amazon Terrain



Autumn Fields



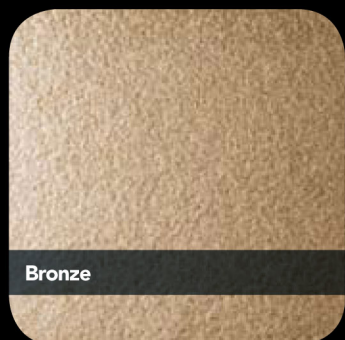
Moroccan Hills



Himalayan Ridge



Durex[®] Cromatex



Bronze



Gold



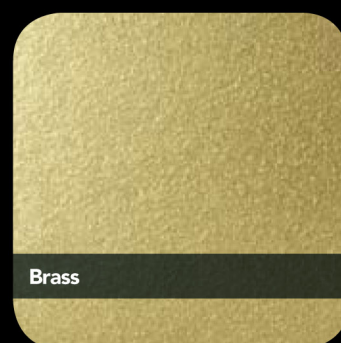
Copper



Green



Light Blue



Brass



Silver



Ruby Red



Platinum

COMPANY PROFILE

Durabond Products Limited is a leader in the manufacturing and development of specialized Architectural Wall Coatings, Exterior Insulation Finish Systems EIFS, Concrete Restoration Products and a wide range of related construction products.

Over many successful years of producing high-quality construction products, Durabond Products Limited has gained worldwide recognition through the use of **Durex® Architectural Coatings** – which have been applied repeatedly in installations totalling millions of square metres. Durabond's products have been engineered to meet various stringent requirements, such as severe weather conditions, building code and local building authority requirements and precise matching of colours and textures. This record is achieved through extensive testing with authoritative independent laboratories and Durabond's own research and development team. These dynamics accent the company's superior commitment to consistently manufacture quality products that guarantee performance and durability.

GENERAL TIPS

Aesthetics

Durex® New Generation Textures are a line of architectural finish coatings that expand the imagination of what is possible from a trowel applied finish. The Durex® New Generation Textures are individual and innovative; featuring aesthetic properties that are intended to open up a whole new realm of possibilities that are as progressive as the architectural industry.

Durex® New Generation Textures are technically superior acrylic-polymer based coatings manufactured by Durabond Products Ltd. They are chemically engineered to be exceptionally flexible and durable; formulated for both exterior and interior applications. Whether being used on expansive exterior surfaces or small interior details, Durex® New Generation Textures are part of Durabond Products Ltd.'s highly reputable product line that will perform to the most demanding designs.

Performance

Durex® New Generation Textures are part of a system of components that are designed to work together. The performance of the Durex® New Generation Textures is dependent on the system components to which it is applied. Ensure that your speciality texture is applied as part of a Durex® Wall system.

When installing any Durex® New Generation Texture, the performance of the coating will be dependent on the quality of base to which it is applied. Durex's products are engineered to adhere to any cementitious surface. Ensure that the Durex® New Generation Texture is applied to a solid and fully cured cementitious base. The surface must be clean and free of all foreign materials, including dirt, dust and grime. Contamination of the base may jeopardize the adhesion of the Durex® New Generation Texture to the surface. Priming the surface with Durex® Brush Coat is required, and will strengthen the bond of the Durex® New Generation Textures to the cementitious base.

To achieve maximum aesthetical performance out of the Durex® New Generation Texture, it is important to follow the following application guidelines.

- :: Durex® New Generation Textures will not hide wall imperfections. Ensure that the prepared wall is straight and true before applying the Durex® New Generation Texture.
- :: Always use Durex® Brush Coat as a primer before applying your Durex® New Generation Textures. It will ensure colour consistency throughout the application.
- :: Durex® New Generation Textures are designed to be applied and finished with a steel trowel. Ensure that a clean and consistent hand motion is used throughout the application process.
- :: Apply the product in sections using architectural breaks as endpoints. Environmental conditions may cause slight but noticeable changes in the colour or finish.

Head Office

55 Underwriters Road
Toronto, Ontario M1R 3B4
T 416.759.4474 F 416.759.4470

Western Canada Office

14345–120th Avenue
Edmonton, Alberta T5L 2R8
T 780.451.6364 F 780.453.9056

General Inquiries

T 1.877.387.2266
E info@durabond.com
W www.durabond.com

The printed samples represent the actual finish colours as closely as possible. However, colour appearance may vary by texture, size and shape of area. Lighting, method of application, exposure to heat and light and age may also affect the appearance of the colour chips. Always request a textured sample before finalizing an order.