

## FWFOC.EW13 Exterior Wall Insulation and Finish Systems

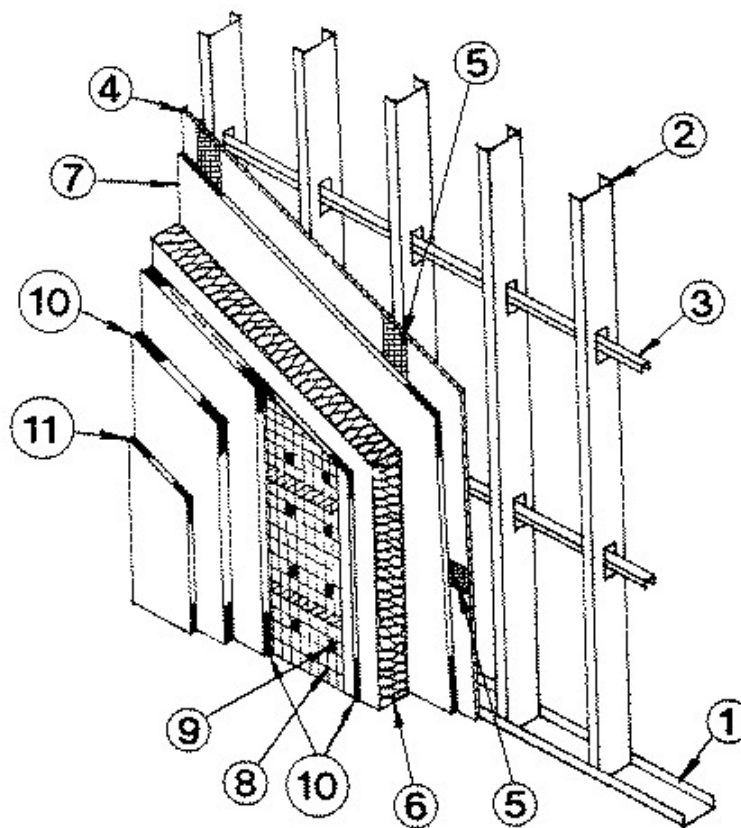
Page Bottom

### Exterior Wall Insulation and Finish Systems

See General Information for Exterior Wall Insulation and Finish Systems

#### System No. EW13

May 02, 2006



1. **Floor and Ceiling Tracks** — Galvanized steel channels, 2.2 mm thick by 95 mm deep with 64 mm wide flanges, attached to masonry or concrete with steel fasteners.
2. **Steel Studs** — Galvanized steel channels, 1.1 mm thick by 92 mm deep with 41 mm wide flanges; the studs have 38 mm wide cut-outs at 900 mm OC along the web of the channels. The studs are fastened to the floor and ceiling tracks at 400 mm OC with self-tapping steel screws.
3. **Bracing** — Galvanized steel channels, 1.6 mm thick by 38 mm deep with 11 mm wide flanges, inserted through the stud cutouts at 900 mm OC. The bracing is attached to the studs with clip angles and self-tapping steel screws.
4. **Mineral and Fibre Boards** — CERZC (Guide No. 40U18.13). Nominal 12.7 mm thick "Perma Base" cement boards installed horizontally in staggered rows with board joints on wall studs. The boards are fastened to the studs, floor and ceiling track with 32 mm long self-tapping steel screws and 17 mm diameter steel washers spaced 200 mm OC along the edges of the boards (studs and tracks) and 300 mm OC in the field of the boards (studs).

**UNIFIX INC**

- **5. Component for Exterior Wall Insulation and Finish System** — FWFXC (Guide No. 40 U23.5.3). "Durabond Mastic 100" joint compound applied to seal the vertical and horizontal joints between the "Duraboard Type 2" boards. A layer of joint tape is embedded in the joint compound; a second layer of joint compound, 127 mm wide, to be applied on top of the joint tape.

**DURABOND PRODUCTS LTD**

- **6. Rigid Roof Insulation** — CDETC (Guide No. 40 U18.9). "Celfort 300" extruded polystyrene insulation, 83 mm thick boards, installed horizontally in staggered rows.

**OC CELFORTEC INC**

- **7. Component for Exterior Wall Insulation and Finish System** — FWFXC (Guide No. 40 U23.5.3). Continuous beads of adhesive coating, 50 mm wide by 25 mm thick, around the perimeter and in the field of the insulation boards (Item 6). The adhesive coating consists of a mixture of 2.80 parts by weight of "Durex Uniplast" powder to 1.00 part by weight of "Durex Acrybond S" liquid.

**DURABOND PRODUCTS LTD**

- **8. Fiberglass Mesh** — A layer of fibreglass mesh with a minimum area density of 0.36 kg/m<sup>2</sup> applied in horizontal strips with a 130 mm overlap between strips. The mesh is held in place with mechanical fasteners (Item 9).

**9. Mechanical Fasteners** — A mechanical fastener system consisting of a 4 mm diameter by 110 mm long steel screw and a 51 mm diameter by 0.4 mm thick steel disk. The steel disk is applied on top of the fibreglass mesh (Item 8), and the screws are driven through the disks and the materials on the exterior side of the wall into every stud and the floor and ceiling tracks. The fasteners are spaced at 250 mm OC along each stud and 400 mm OC along the floor and ceiling tracks.

- **10. Component for Exterior Wall Insulation and Finish System** — FWFXC (Guide No. 40 U23.5.3). Intermediate coating applied in two layers and consisting of a mixture of 2.80 parts by weight of "Durex Uniplast" powder to 1.00 parts by weight of "Durex Acrybond S" liquid. The first layer is applied to cover the insulation (Item 6), fibreglass mesh (Item 8), and the mechanical fasteners (Item 9) at a minimum rate of 3.84 kg/m<sup>2</sup> (wet); the second layer is applied on top of the first layer at a minimum rate of 3.84 kg/m<sup>2</sup> (wet) after the first layer has cured.

**DURABOND PRODUCTS LTD**

- **11. Component for Exterior Wall Insulation and Finish System** — FWFXC (Guide No. 40 U23.5.3). One layer of premixed "Durex Architectural Coating" applied at a maximum rate of 1.61 kg/m<sup>2</sup> (wet).

**DURABOND PRODUCTS LTD**

Last Updated on 2006-05-02

[Questions?](#)

[Print this page](#)

[Notice of Disclaimer](#)

[Page Top](#)

Copyright © 2010 Underwriters Laboratories of Canada Inc.

The appearance of a company's name or product in this database does not in itself assure that products so identified have been manufactured under ULC's Follow-Up Service. Only those products bearing the ULC Mark should be considered to be Listed and covered under ULC's Follow-Up Service. Always look for the Mark on the product.

ULC permits the reproduction of the material contained in the ULC Online Directories subject to the following conditions: 1. The Guide Information, Designs and/or Listings (files) must be presented in their entirety and in a non-misleading manner, without any manipulation of the data (or drawings). 2. The statement "Reprinted from the ULC Online Directories with permission from Underwriters Laboratories of Canada Inc." must appear adjacent to the extracted material. In addition, the reprinted material must include a copyright notice in the following format: "Copyright © 2010 Underwriters Laboratories of Canada Inc."

An independent organization working for a safer world with integrity, precision and knowledge.

