

FWFOC.EW17 Exterior Wall Insulation and Finish Systems

[Page Bottom](#)

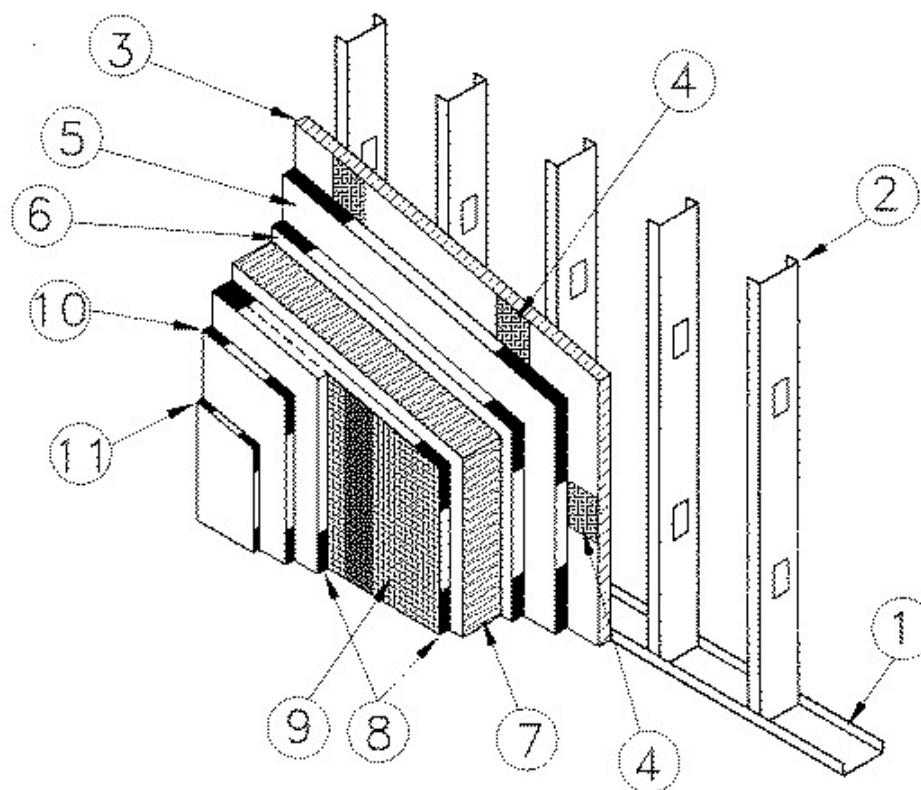
Exterior Wall Insulation and Finish Systems

[See General Information for Exterior Wall Insulation and Finish Systems](#)

System No. EW17

May 02, 2006

EXTERIOR WALL INSULATION AND FINISH SYSTEM



1. Floor and Ceiling Tracks — Galvanized steel channels, 1.0 mm thick by 95 mm deep, with 34 mm wide flanges attached to masonry or concrete with steel fasteners.

2. Steel Studs — Galvanized steel channels, 1.1 mm thick by 94 mm deep, with 41 mm wide flanges and 13 mm lips; the studs have 38 mm wide cutouts at 600 mm OC along the web of the channels. The studs are fastened to the floor and ceiling tracks with self-tapping steel screws.

3. Wallboard — CKNXC (Guide No. 40 U18.23). Nominal 15.9 mm thick gypsum boards designated "Type DGG, DensGlass Gold Sheathing" installed horizontally in staggered rows with vertical joints between boards on wall studs. The boards are fastened to the studs, floor and ceiling track with 41 mm long drywall screws; the perimeter screws are located 25 mm from the vertical and horizontal joints between boards and are spaced 300 mm OC in the vertical direction and 400 mm OC horizontally. In the field of the boards, they are attached to every stud with screws spaced at 300 mm OC in the

vertical direction.

GEORGIA-PACIFIC GYPSUM L L C

4. **Joint Tape** — A self-adhesive fibreglass mesh joint tape applied over all vertical and horizontal joints between gypsum boards.

- 5A. **Component for Exterior Wall Insulation and Finish System** — FWFXC (Guide No. 40 U23.5.3). A skim coat of adhesive installed over the gypsum board and joint tape at a minimum wet application rate of 1.25 kg/m². The adhesive consists of a mixture of 2.6 parts by weight of "Durex Uniplast" powder to 1.0 part by weight of "Durex Acrybond S" liquid.

DURABOND PRODUCTS LTD

OR

5B. FWFXC (Guide No. 40 U23.5.3). A skim coat of adhesive installed over the gypsum board at a minimum net rate of 3.56 kg/m². The adhesive consists of a mixture of 1.8 to 1.4 parts by weight of "Durex Flexcrete" liquid to 1 part by weight of "Durex Flexcrete B" powder.

- 6. **Component for Exterior Wall Insulation and Finish System** — FWFXC (Guide No. 40 U23.5.3). A layer of adhesive installed over the back surface of the insulation boards at a minimum wet application rate of 3.55 kg/m². The adhesive consists of a mixture of the components defined in Item 5 mixed together also as specified in Item 5.

DURABOND PRODUCTS LTD

7. **Rigid Roof Insulation** — Type 1. Expanded polystyrene insulation boards, 110 mm thick (maximum), installed horizontally with vertical and horizontal joints offset from those in the gypsum board. The adhesive covered insulation boards were pressed firmly onto the skim coat of adhesive.

- 8. **Component for Exterior Wall Insulation and Finish System** — FWFXC (Guide No. 40 U23.5.3). A layer of base coat installed over the insulation boards at a minimum wet application rate of 5.4 kg/m². The base coat consists of a mixture of 2.6 parts by weight of "Durex Uniplast" powder to 1.0 part by weight of "Durex Acrybond S" liquid. The surface of this layer of base coat is to be scored before curing is complete.

DURABOND PRODUCTS LTD

9. **Fiberglass Mesh** — A layer of fibreglass mesh with a minimum area density of 0.36 kg/m² installed vertically with a 235 mm overlap between strips. The mesh is to be trowelled into the top surface of the first layer of base coat (Item 8).

DURABOND PRODUCTS LTD

- 10. **Component for Exterior Wall Insulation and Finish System** — FWFXC (Guide No. 40 U23.5.3). A second layer of base coat installed at a minimum wet application rate of 7.9 kg/m². The base coat consists of a mixture of the components defined in Item 8 mixed together also as specified in Item 8.

DURABOND PRODUCTS LTD

- 11. **Component for Exterior Wall Insulation and Finish System** — FWFXC (Guide No. 40 U23.5.3). One layer of premixed "Durex Architectural Coating" applied at a maximum wet application rate of 2.4 kg/m².

DURABOND PRODUCTS LTD

Last Updated on 2006-05-02

[Questions?](#)

[Print this page](#)

[Notice of Disclaimer](#)

[Page Top](#)

The appearance of a company's name or product in this database does not in itself assure that products so identified have been manufactured under ULC's Follow-Up Service. Only those products bearing the ULC Mark should be considered to be Listed and covered under ULC's Follow-Up Service. Always look for the Mark on the product.

ULC permits the reproduction of the material contained in the ULC Online Directories subject to the following conditions: 1. The Guide Information, Designs and/or Listings (files) must be presented in their entirety and in a non-misleading manner, without any manipulation of the data (or drawings). 2. The statement "Reprinted from the ULC Online Directories with permission from Underwriters Laboratories of Canada Inc." must appear adjacent to the extracted material. In addition, the reprinted material must include a copyright notice in the following format: "Copyright © 2010 Underwriters Laboratories of Canada Inc."

An independent organization working for a safer world with integrity, precision and knowledge.

