

## FWFOC.EW23 Exterior Wall Insulation and Finish Systems

[Page Bottom](#)

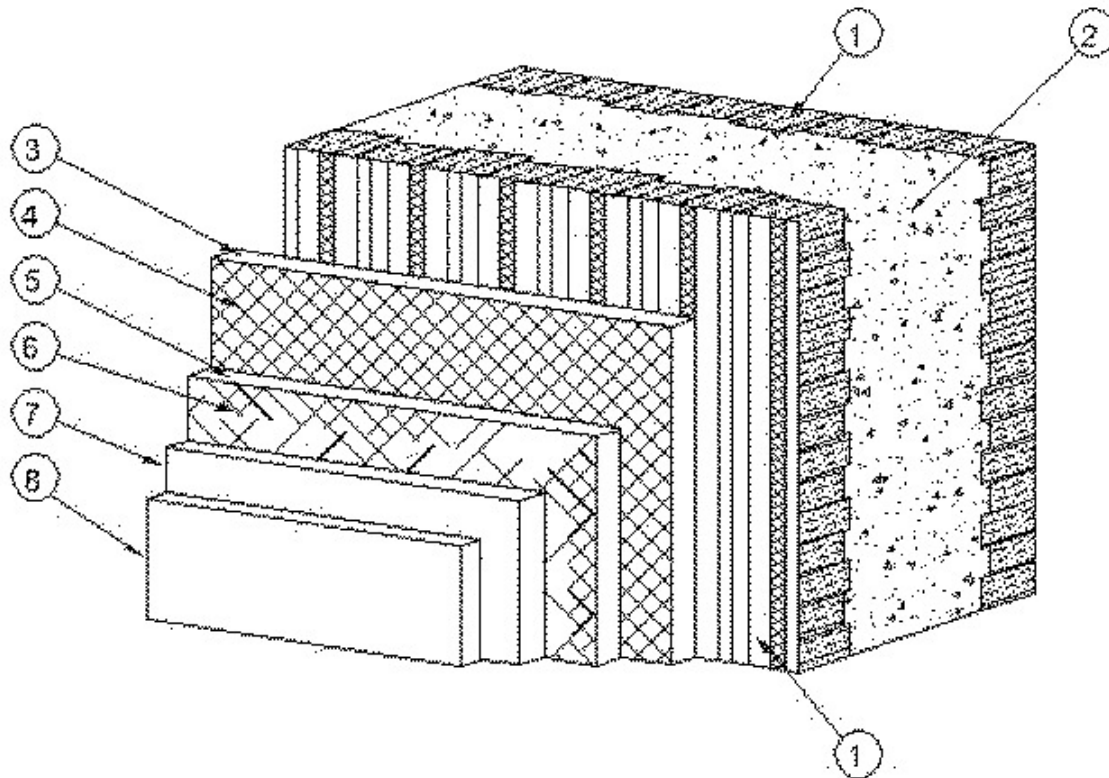
### Exterior Wall Insulation and Finish Systems

[See General Information for Exterior Wall Insulation and Finish Systems](#)

#### System No. EW23

January 30, 2007

#### EXTERIOR WALL INSULATION AND FINISH SYSTEM



#### FIRE SIDE

1. **Insulated Concrete Forms** — Standard form units comprised of two 2440 by 457 mm by 67 mm thick expanded polystyrene (EPS) panels with a maximum density of  $20 \text{ kg/m}^3$ , linked by polypropylene webs at 200 mm OC horizontally. The minimum width of the ICF cavity is 152 mm.

2. **Sand-Limestone Concrete** — Minimum 152 mm thick normal-density concrete ( $2300 \pm 50 \text{ kg/m}^3$ ), 20 MPa nominal compressive strength.

3. **Component for Exterior Wall Insulation and Finish System** — FWFXC (Guide No. 40 U23.5.3). A first layer of base coat is applied to the bottom 450 mm of the wall at a minimum wet application rate of  $10.5 \text{ kg/m}^2$ . The base coat consists of a mixture of 4 parts by weight of "Durex Uniplast" powder to 1.0 part by weight of "Durex Acrybond S" liquid.

**DURABOND PRODUCTS LTD**

4. **Fibreglass Mesh** — A 450 mm wide layer of fibreglass mesh reinforcement with an area density of 0.50 kg/m<sup>2</sup> is installed horizontally and trowelled into the top surface of the first layer of base coat (Item 3).

■ **5. Component for Exterior Wall Insulation and Finish System** — FWFXC (Guide No. 40 U23.5.3). A second layer of base coat is applied to the entire wall surface at a minimum wet application rate of 4.73 kg/m<sup>2</sup>. The base coat consists of a mixture of 4 parts by weight of "Durex Uniplast" powder to 1.0 part by weight of "Durex Acrybond S" liquid.

**DURABOND PRODUCTS LTD**

6. **Fibreglass Mesh** — A layer of fibreglass mesh reinforcement with an area density of 0.20 kg/m<sup>2</sup> is installed vertically with 100 mm overlap between strips. The mesh is to be trowelled into the top surface of the second layer of base coat (Item 5).

■ **7. Component for Exterior Wall Insulation and Finish System** — FWFXC (Guide No. 40 U23.5.3). A third layer of base coat is applied over the entire wall surface at a minimum wet application rate of 3.37 kg/m<sup>2</sup>. The base coat consists of a mixture of 4 parts by weight of "Durex Uniplast" powder to 1.0 part by weight of "Durex Acrybond S" liquid.

**DURABOND PRODUCTS LTD**

■ **8. Component for Exterior Wall Insulation and Finish System** — FWFXC (Guide No. 40 U23.5.3). One layer of premixed "Durex Architectural Coating" applied at a minimum wet application rate of 2.05 kg/m<sup>2</sup> over base coat.

**DURABOND PRODUCTS LTD**

Last Updated on 2007-01-30

[Questions?](#)

[Print this page](#)

[Notice of Disclaimer](#)

[Page Top](#)

Copyright © 2010 Underwriters Laboratories of Canada Inc.

The appearance of a company's name or product in this database does not in itself assure that products so identified have been manufactured under ULC's Follow-Up Service. Only those products bearing the ULC Mark should be considered to be Listed and covered under ULC's Follow-Up Service. Always look for the Mark on the product.

ULC permits the reproduction of the material contained in the ULC Online Directories subject to the following conditions: 1. The Guide Information, Designs and/or Listings (files) must be presented in their entirety and in a non-misleading manner, without any manipulation of the data (or drawings). 2. The statement "Reprinted from the ULC Online Directories with permission from Underwriters Laboratories of Canada Inc." must appear adjacent to the extracted material. In addition, the reprinted material must include a copyright notice in the following format: "Copyright © 2010 Underwriters Laboratories of Canada Inc."

An independent organization working for a safer world with integrity, precision and knowledge.

