

BXUVC.W425 Fire Resistance Ratings

[Page Bottom](#)

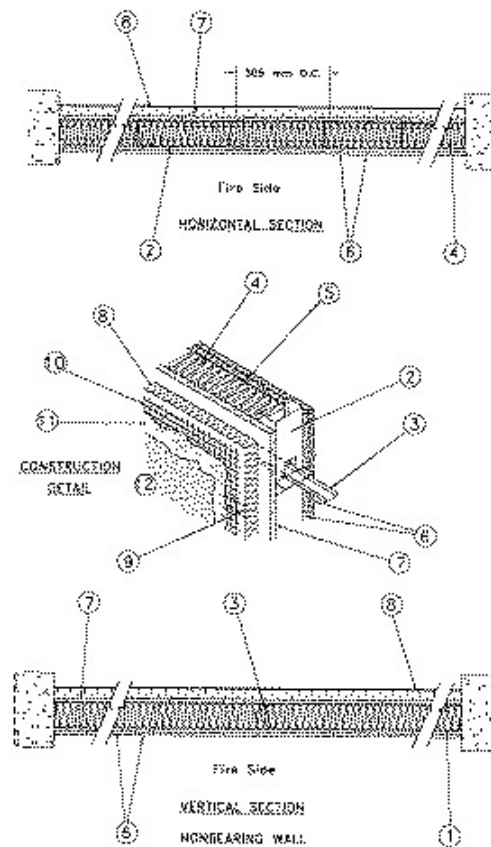
Fire Resistance Ratings

[See General Information for Fire Resistance Ratings](#)

Design No. W425

May 02, 2006

Assembly Rating - 2 h



1. **Floor and Ceiling Track** — Channel-shaped, 95 mm deep by 30 mm wide, 0.9 mm thick galvanized steel, attached to masonry or concrete with fasteners spaced 600 mm OC.

2. **Steel Studs** — 92 mm deep by 35 mm wide channel with 6 mm lip on each flange tip, 0.9 mm thick galvanized steel, fastened to the floor and ceiling track, spaced 305 mm apart. Studs have 38 mm cutouts.

3. **Bracing** — 38 mm deep by 12.7 mm wide steel channels, 1.2 mm thick galvanized steel are inserted in the stud cutouts at 1018 mm OC, and are supported by angles fastened to both the stud and the channel.

4. **Insulation** — Glass-fibre blankets nominally 90 mm thick, density 13 kg/m³, supplied in 610 mm by 1220 mm batts, placed between the studs.

5. **Vapour Barrier** — Vapour barrier 0.05 mm thick clear polyethylene.

- **6. Gypsum Wallboard** — CKNXC (Guide No. 40 U18.23). Two layers of "Type Fireguard C", 12.7 mm thick by 1220 mm wide boards mechanically fastened to the steel studs and floor and ceiling tracks on the interior side. The first and second layers of the wallboard are positioned in the vertical and horizontal directions respectively and attached using 3 mm diameter self-drilling, self-tapping screws 25 mm and 40 mm long, respectively, fastened to the studs at 305 mm OC. Outer layer joints are covered with joint tape and joint compound. Screw heads are covered with joint compound.

GEORGIA-PACIFIC GYPSUM L L C

- **7. Mineral and Fibre Boards** — CERZC (Guide No. 40 U18.13). "Perma Base" cement boards, nominal 12.7 mm thick, fastened to the studs by means of 6.4 mm diameter screws 25 mm long, and 16.7 mm diameter washers spaced at 305 mm OC. Self-adhesive mesh tape and mastic compound are applied over the joints.

UNIFIX INC

- **8. Mineral and Fibre Boards** — CERZC (Guide No. 40 U18.13). Insulation boards 610 mm wide by 1220 mm long by 51 mm thick fastened to the studs by means of 4.7 mm diameter self-tapping, self-drilling screws, 95 mm long over the insulation and 112 mm long through horizontal channels (Item 9). All screws spaced at 305 mm and 610 mm OC in the horizontal and vertical directions respectively.

OWENS CORNING CANADA INC

- 9. **Channels** — 41 mm wide with 12 mm flanges 0.6 mm thick galvanized steel penetrates through the insulation material positioned horizontally at 600 mm OC.

- 10. **Metal Lath** — 3 mm high attached to Items 8 and 9 by means of 4.5 mm diameter by 14.5 mm long lath screws at 190 mm OC. Vertical expansion joint is required for each 1500 mm. Provision to be made for an overlap of 50 mm at the joints.

- **11. Protective Coating** — CAWCC (Guide No. 40 U18.12.16). "Uniplast" base coat, two coats required, applied at the rate of 28 kg/m² total for both coats. Proportioned and mixed at the factory or at site with the following formulation (% by wt):

12.6% Durabond binder, 65.5% sand, 6.1% masonry cement and 15.8% Portland cement.

Allow 24 hour curing time for each coat.

DURABOND PRODUCTS LTD

- **12. Protective Coatings** — CAWCC (Guide No. 40 U18.12.16). Durex architectural coating, applied at the rate of 2 kg/m² on top of the base coat. Average thickness of this coat is 1.25 mm.

DURABOND PRODUCTS LTD

Last Updated on 2006-05-02

[Questions?](#)

[Print this page](#)

[Notice of Disclaimer](#)

[Page Top](#)

Copyright © 2010 Underwriters Laboratories of Canada Inc.

The appearance of a company's name or product in this database does not in itself assure that products so identified have been manufactured under ULC's Follow-Up Service. Only those products bearing the ULC Mark should be considered to be Listed and covered under ULC's Follow-Up Service. Always look for the Mark on the product.

ULC permits the reproduction of the material contained in the ULC Online Directories subject to the following conditions: 1. The Guide Information, Designs and/or Listings (files) must be presented in their entirety and in a non-misleading manner, without any manipulation of the data (or drawings). 2. The statement "Reprinted from the ULC Online Directories with permission from Underwriters Laboratories of Canada Inc." must appear adjacent to the extracted material. In addition, the reprinted material must include a copyright notice in the following format: "Copyright © 2010 Underwriters Laboratories of Canada Inc."

An independent organization working for a safer world with integrity, precision and knowledge.

