

**BXUVC.W442
Fire Resistance Ratings**

[Page Bottom](#)

Fire Resistance Ratings

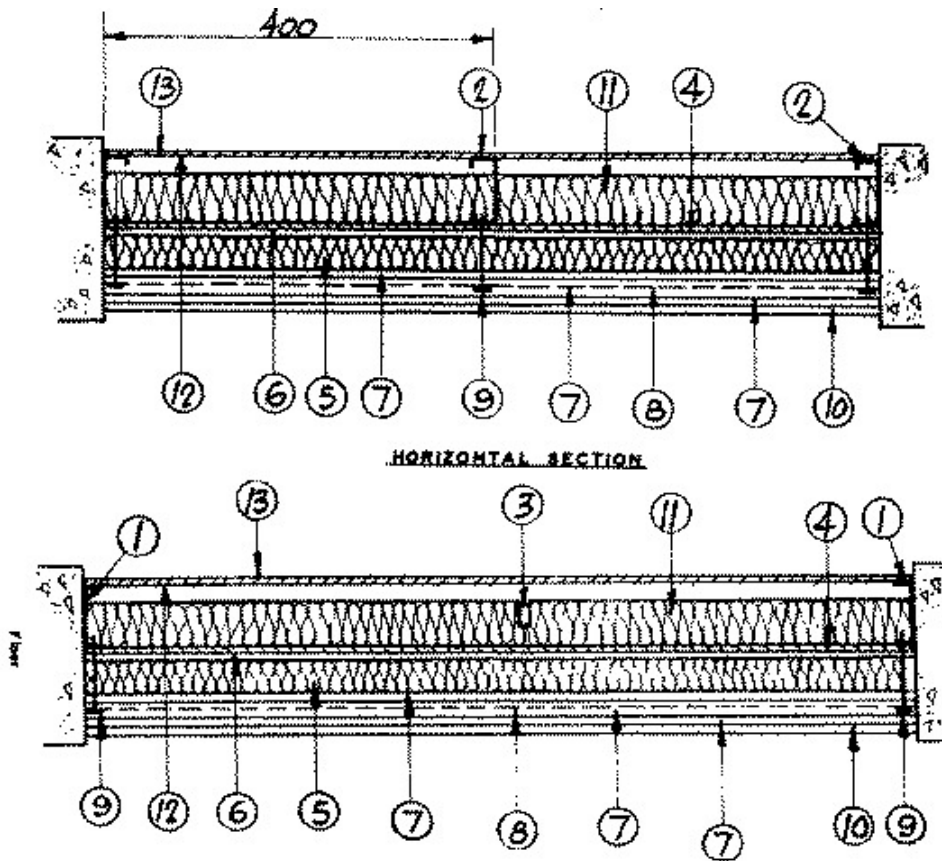
[See General Information for Fire Resistance Ratings](#)

Design No. W442

May 02, 2006

Assembly Rating - 1 h (Fire Exposure from the Exterior Side)

Assembly Rating - 1-1/2 h (Fire Exposure from the Interior Side)



1. Floor and Ceiling Track — Galvanized steel channels 1.05 mm thick by 95 mm deep with 34 mm wide flanges attached to masonry or concrete with fasteners spaced at 800 mm OC.

2. Steel Studs — Galvanized steel channels 1.13 mm thick by 92 mm deep with 40 mm wide flanges; the flanges have 6 mm wide lips. The studs are fastened to the floor and ceiling tracks at 400 mm OC with self-tapping steel screws. The studs have 38 mm wide cutouts at 900 mm OC along the web of the channels.

3. Bracing — Galvanized steel channels 1.67 mm thick by 38 mm deep with 11 mm wide flanges inserted through the stud cutouts at 900 mm OC. The bracing is attached to the studs with clip angles and self-tapping steel screws.

- **4. Gypsum Wallboard** — CKNXC (Guide No. 40 U18.23). "Type DGG, DensGlass Gold Sheathing" boards, 900 mm wide (minimum) by 15.9 mm thick, installed vertically with board joints on wall studs. The boards are fastened to the studs with 41 mm long Type S drywall screws spaced at 200 mm OC along the edges of the boards (studs and tracks) and 300 mm OC in the field of the boards (studs). The joints between boards to be filled with joint compound and a layer of joint tape is embedded in the joint compound; a second layer of joint compound to be applied on top of the joint tape.

GEORGIA-PACIFIC GYPSUM L L C

- 5. **Rigid Roof Insulation** — Type 1 Polystyrene rigid insulation boards, 610 mm wide by 1210 mm long by 50 mm thick, installed horizontally in staggered rows.

- **6. Protective Coating** — CAWCC (Guide No. 40 U18.12.16). One layer of adhesive coating applied at a minimum rate of 3.9 kg/m² (wet), consisting of a mixture of 2.80 parts by weight of "Durex Uniplast" powder to 1.00 part by weight of "Durex Acrybond S" liquid.

DURABOND PRODUCTS LTD

- **7. Protective Coating** — CAWCC (Guide No. 40 U18.12.16). Intermediate coating applied in three layers and consisting of a mixture of 2.80 parts by weight of "Durex Uniplast" powder to 1.00 part by weight of "Durex Acrybond S" liquid. The first layer is applied directly on top of the wall insulation (Item 5) at a minimum rate of 4.1 kg/m² (wet); the second layer is applied on top of the first layer after the first layer has cured at a minimum rate of 7.47 kg/m² (wet); and the third layer is applied on top of the second layer after the second layer has cured at a minimum rate of 1.67 kg/m² (wet).

DURABOND PRODUCTS LTD

- 8. **Fibreglass Mesh** — A layer of fibreglass mesh with a minimum area density of 0.36 kg/m² applied in horizontal strips with a 150 mm overlap between strips. The mesh is trowelled into the first layer of the intermediate coating (Item 7).

- 9. **Mechanical Fasteners** — A mechanical fastener system consisting of a 4 mm diameter by 110 mm long steel screw and a 51 mm diameter by 0.4 mm thick steel disk. The steel disk is applied on top of the fibreglass mesh (Item 8) and the screws are driven through all the materials on the exterior side of the wall into every third stud. The fasteners are spaced at 305 mm OC along the studs.

- **10. Protective Coating** — CAWCC (Guide No. 40 U18.12.16). One layer of premixed "Durex Architectural Coating" applied at a maximum rate of 2.3 kg/m² (wet).

DURABOND PRODUCTS LTD

- 11. **Batts and Blankets** — ULC listed mineral fiber insulation, minimum 75 mm thick and minimum density 40 kg.m³, installed between the studs.

- 12. **Vapour Barrier** — Plastic vapour barrier, 0.05 mm thick, across the face of the studs.

- **13. Gypsum Wallboard** — CKNXC (Guide No. 40 U18.23). "Sheetrock Firecode C" gypsum boards, 1220 mm wide by 12.7 mm thick, installed vertically with board joints on wall studs. The boards are fastened to the studs with 32 mm long Type S drywall screws spaced at 200 mm OC along the edges of the boards (studs and tracks) and 300 mm OC in the field of the boards (studs). The joints between boards to be filled with joint compound and a layer of joint tape is embedded in the joint compound; a second layer of joint compound to be applied on top of the joint tape.

CGC INC

Last Updated on 2006-05-02

Questions?

Print this page

Notice of Disclaimer

Page Top

Copyright © 2010 Underwriters Laboratories of Canada Inc.

The appearance of a company's name or product in this database does not in itself assure that products so identified have been manufactured under ULC's Follow-Up Service. Only those products bearing the ULC Mark should be considered to be Listed and covered under ULC's Follow-Up

Service. Always look for the Mark on the product.

ULC permits the reproduction of the material contained in the ULC Online Directories subject to the following conditions: 1. The Guide Information, Designs and/or Listings (files) must be presented in their entirety and in a non-misleading manner, without any manipulation of the data (or drawings). 2. The statement "Reprinted from the ULC Online Directories with permission from Underwriters Laboratories of Canada Inc." must appear adjacent to the extracted material. In addition, the reprinted material must include a copyright notice in the following format: "Copyright © 2010 Underwriters Laboratories of Canada Inc."

An independent organization working for a safer world with integrity, precision and knowledge.

