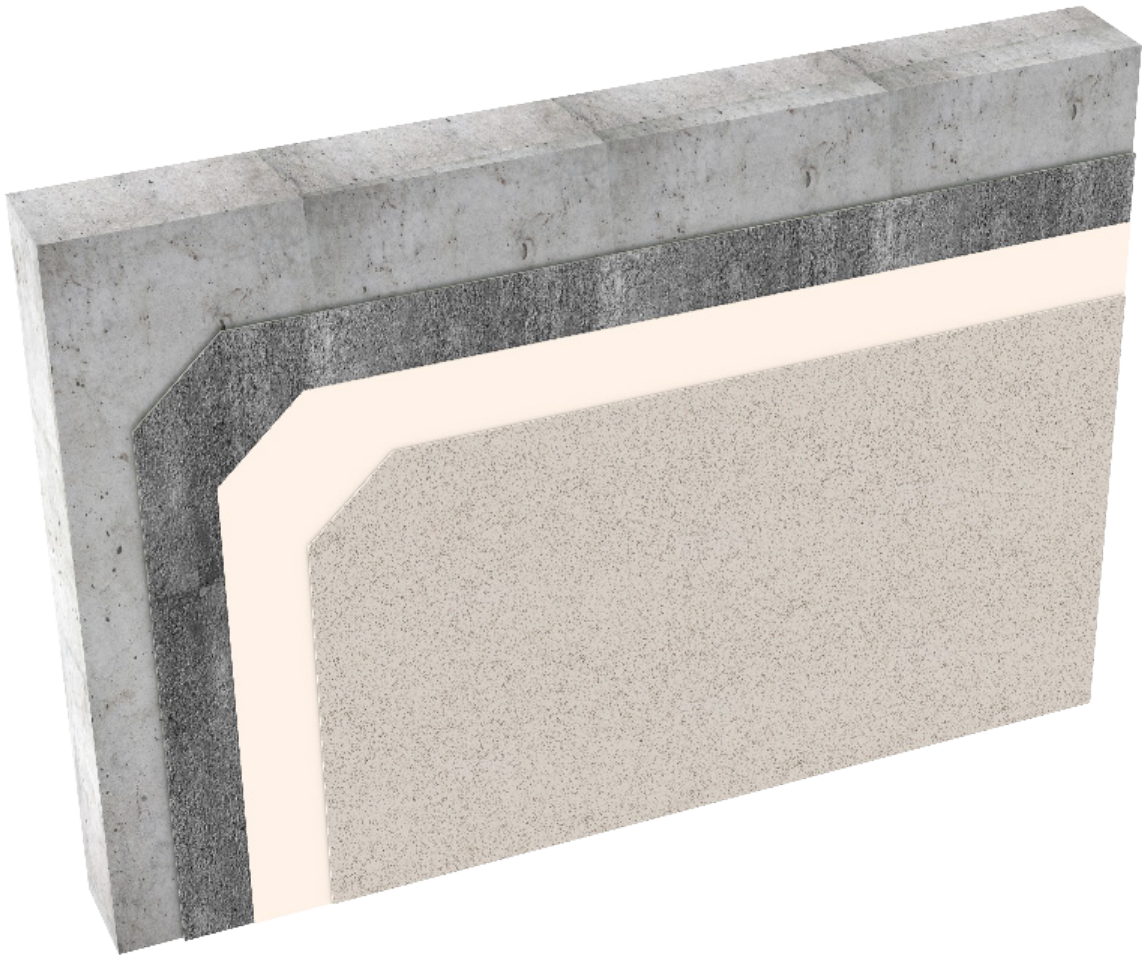


# Durex<sup>®</sup>

## Lite Coat Concrete

*Direct Applied Concrete Rendering  
System*



High Impact  
Resistance



Durable



Water Repellent



Fast Curing

Protect. Enhance. Outperform.

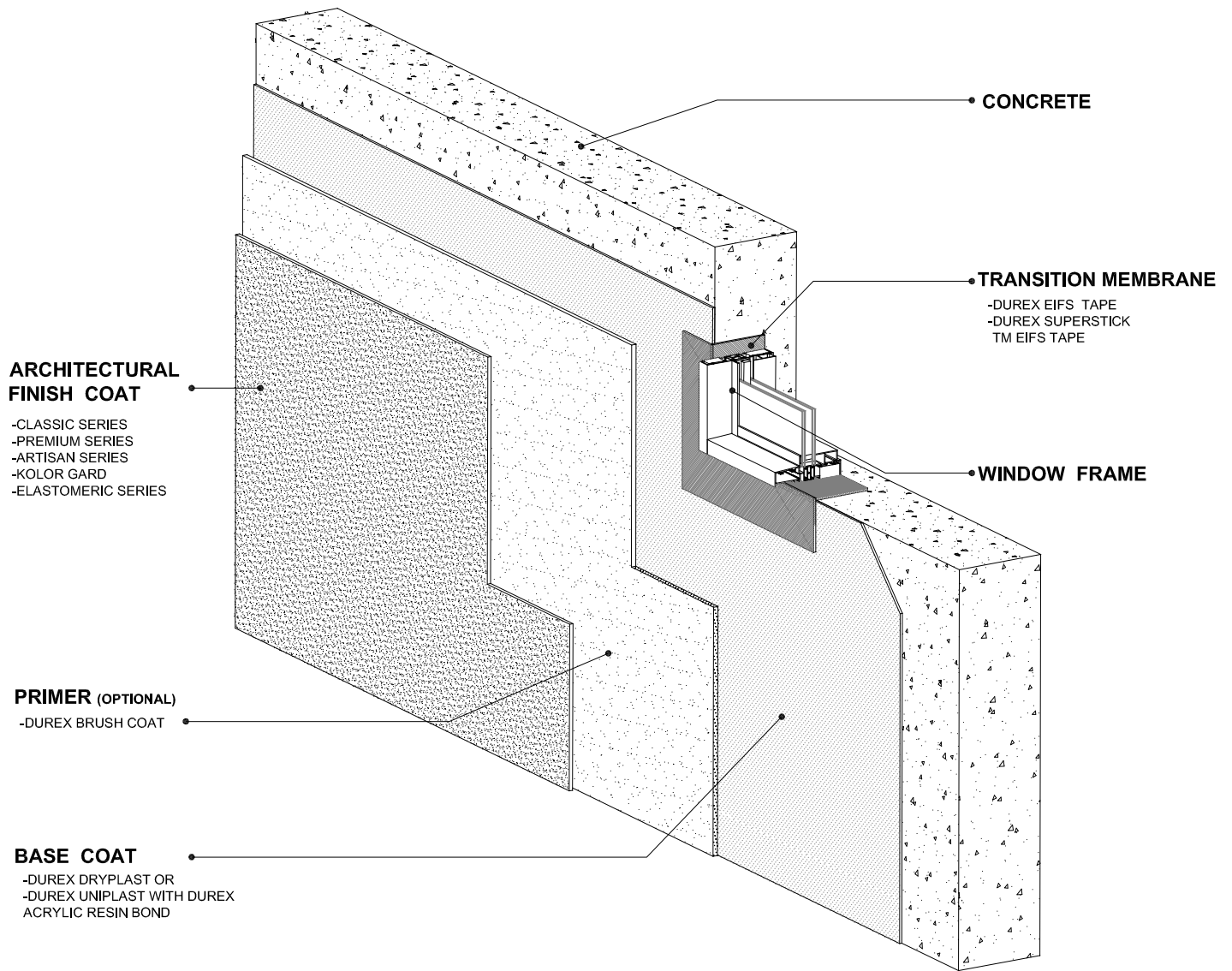
**DURabond**   
1-877-387-2266 info@durabond.com  
www.durabond.com

**SYSTEM DETAILS**

# Durex®

## Lite Coat Concrete

*Direct Applied Concrete Rendering Coating System*



# DURABOND

1-877-387-2266 - info@durabond.com - www.durabond.com

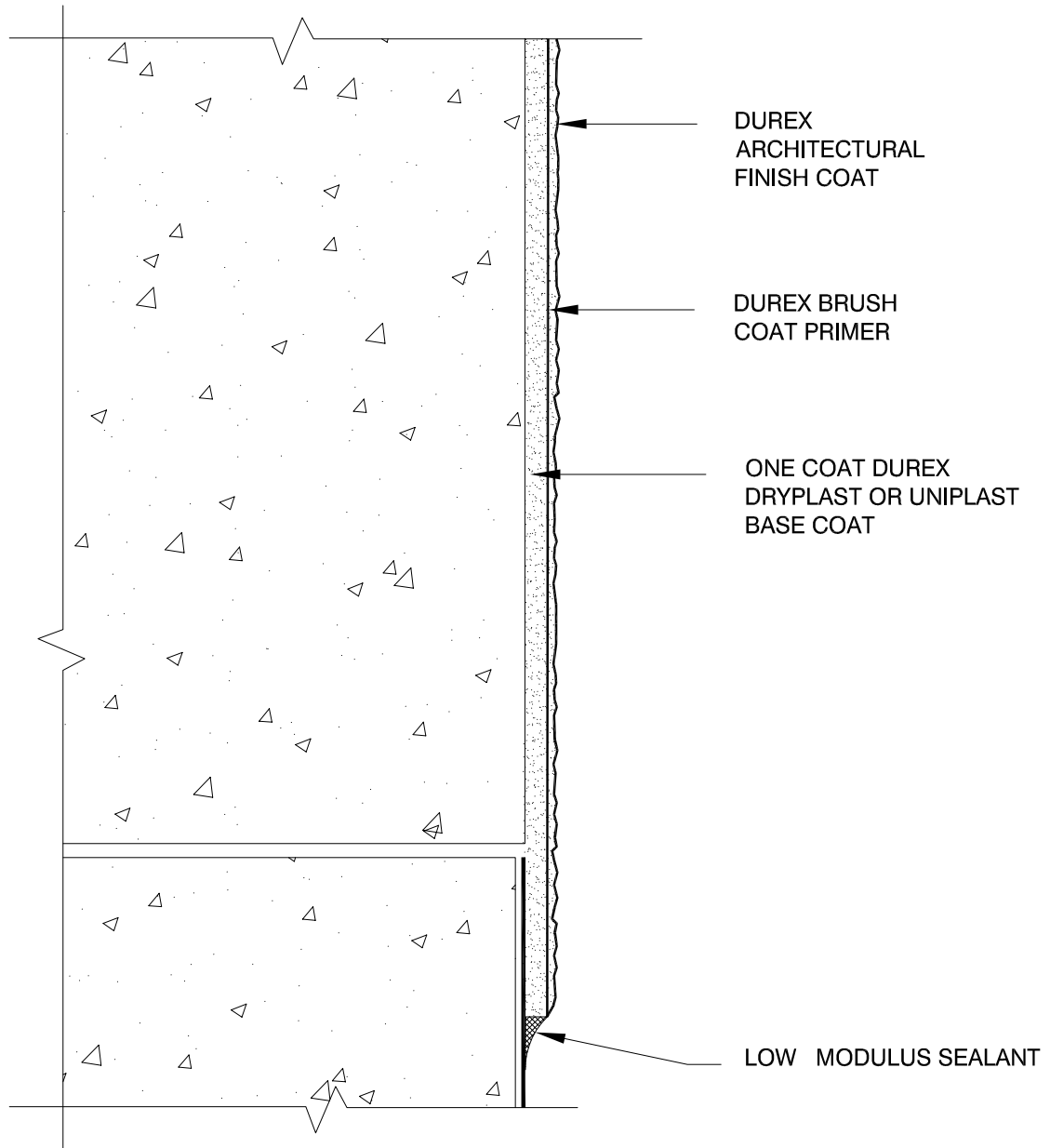
Durabond details are offered to assist in the development of project specific details; principles and variables incorporated in all details are the sole responsibility of the project professional(s).

*System Isometric  
& Components*

# Durex<sup>®</sup>

## Lite Coat Concrete

FOUNDATION



# DURABOND

1-877-387-2266 - info@durabond.com - www.durabond.com

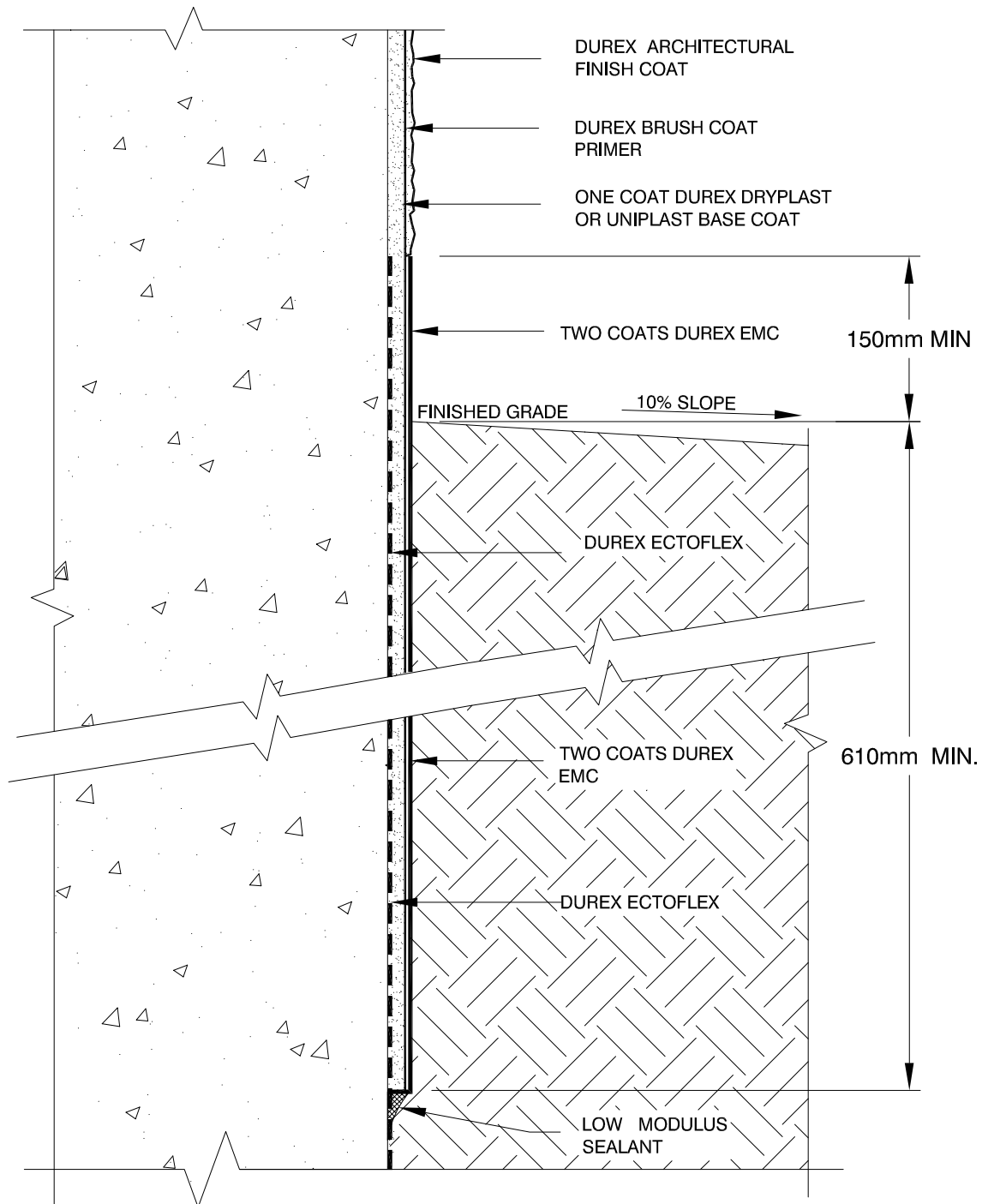
Durabond details are offered to assist in the development of project specific details; principles and variables incorporated in all details are the sole responsibility of the project professional(s).

**LCC-FND-01**

# Durex<sup>®</sup>

## Lite Coat Concrete

*BELOW GRADE*



# DURABOND

1-877-387-2266 - info@durabond.com - www.durabond.com

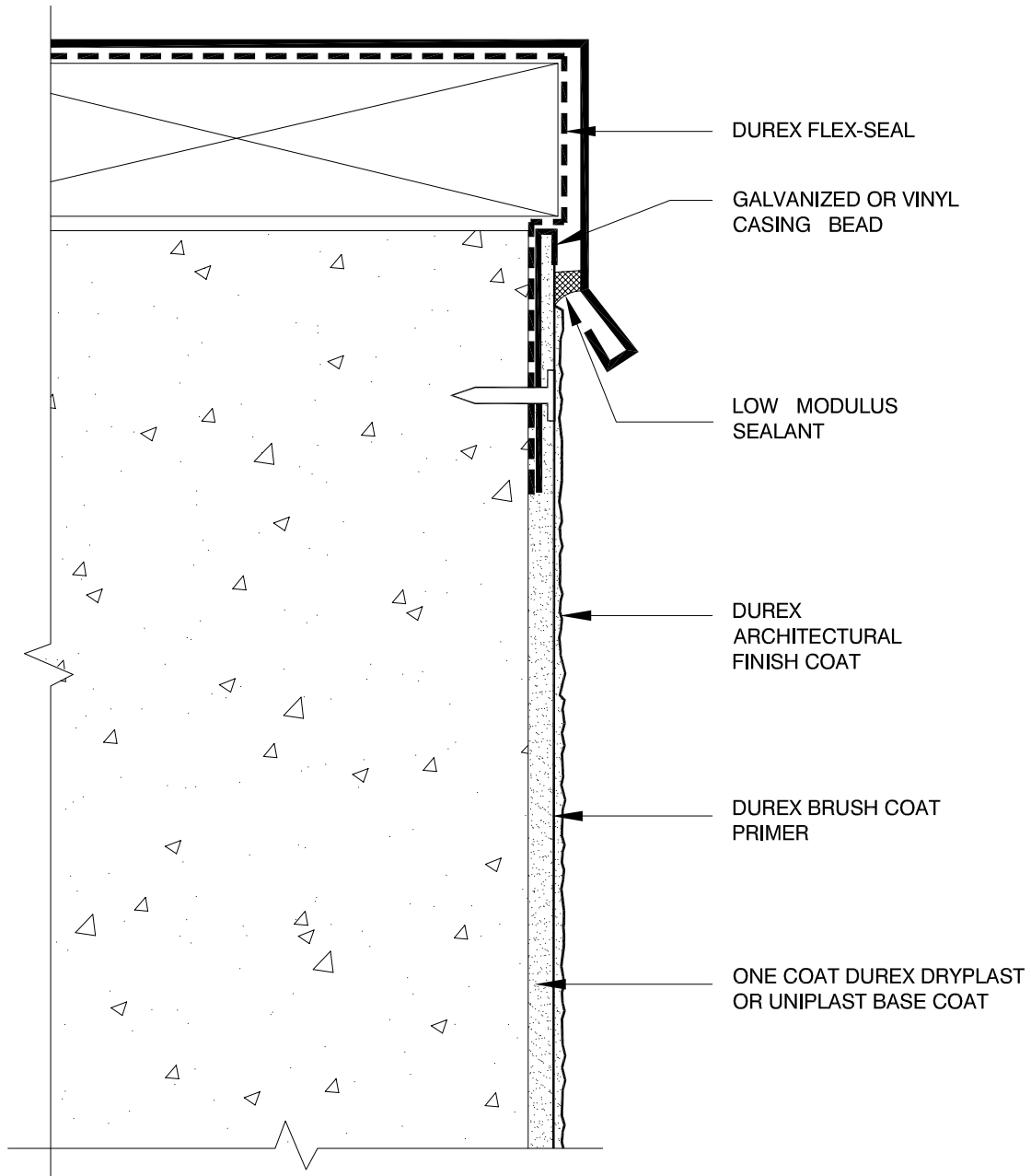
Durabond details are offered to assist in the development of project specific details; principles and variables incorporated in all details are the sole responsibility of the project professional(s).

**LCC-BGD-01**

# Durex®

## Lite Coat Concrete

### ROOF PARAPET



# DURABOND

1-877-387-2266 - info@durabond.com - www.durabond.com

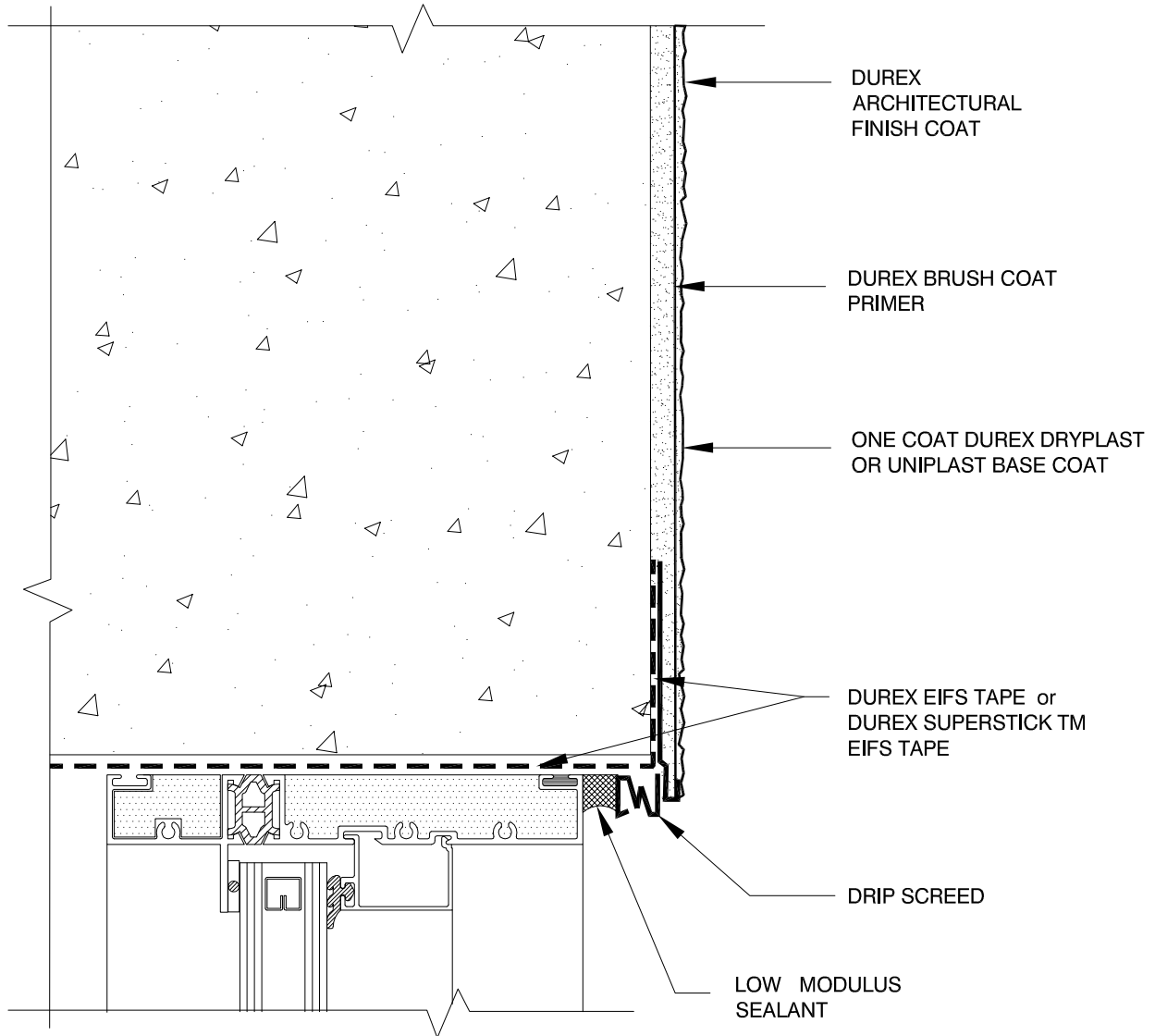
Durabond details are offered to assist in the development of project specific details; principles and variables incorporated in all details are the sole responsibility of the project professional(s).

**LCC-PRT-01**

# Durex®

## Lite Coat Concrete

WINDOW HEAD



# DURABOND

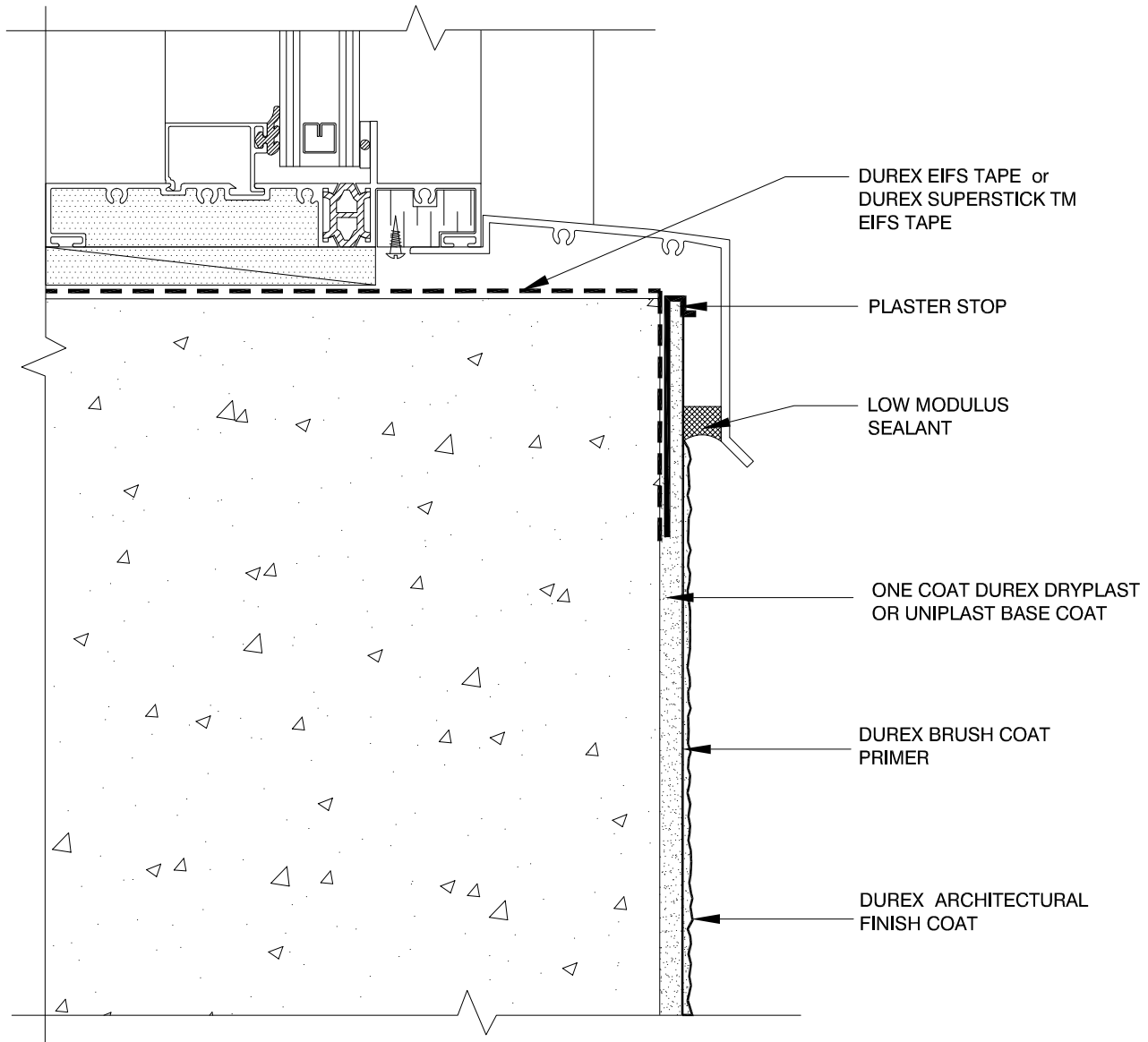
1-877-387-2266 - info@durabond.com - www.durabond.com

Durabond details are offered to assist in the development of project specific details; principles and variables incorporated in all details are the sole responsibility of the project professional(s).

**LCC-WHD-01**

# Durex® Lite Coat Concrete

WINDOW SILL



**DURABOND**

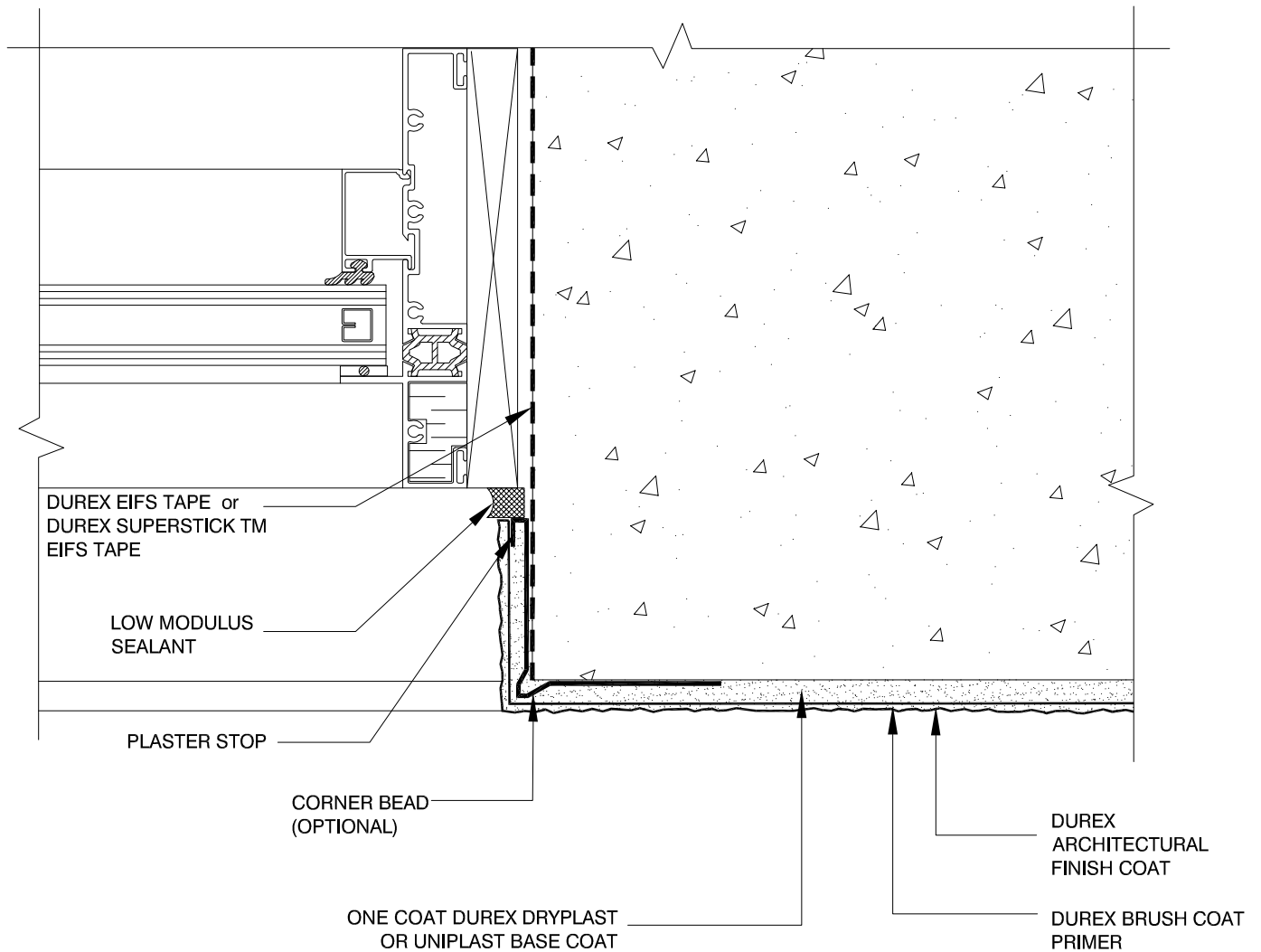
1-877-387-2266 - info@durabond.com - www.durabond.com

Durabond details are offered to assist in the development of project specific details; principles and variables incorporated in all details are the sole responsibility of the project professional(s).

**LCC-WSL-01**

# Durex® Lite Coat Concrete

WINDOW JAMB



## DURABOND

1-877-387-2266 - info@durabond.com - www.durabond.com

Durabond details are offered to assist in the development of project specific details; principles and variables incorporated in all details are the sole responsibility of the project professional(s).

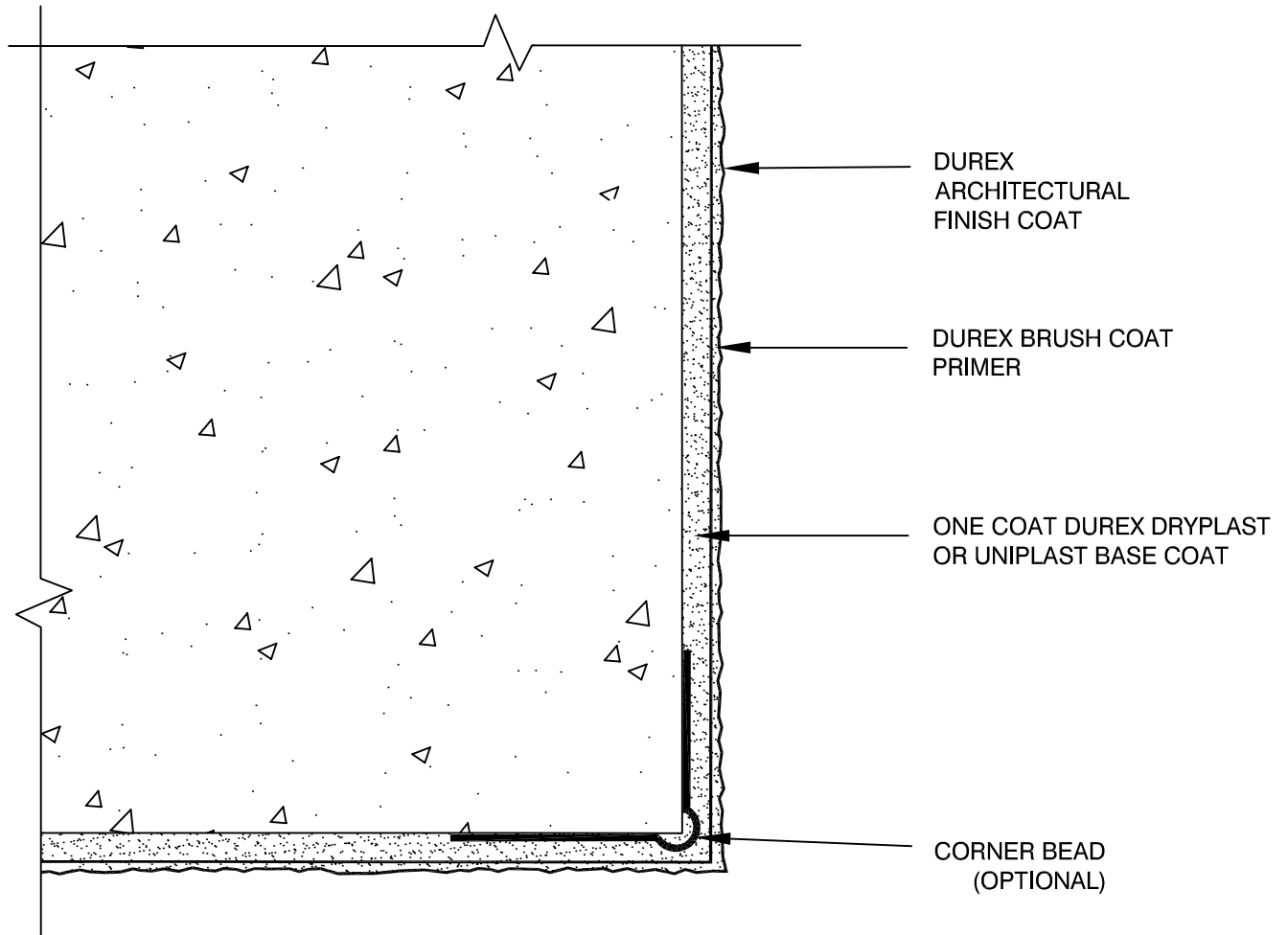
LCC-WJM-01



# Durex®

## Lite Coat Concrete

*OUTSIDE CORNER*



# DURABOND

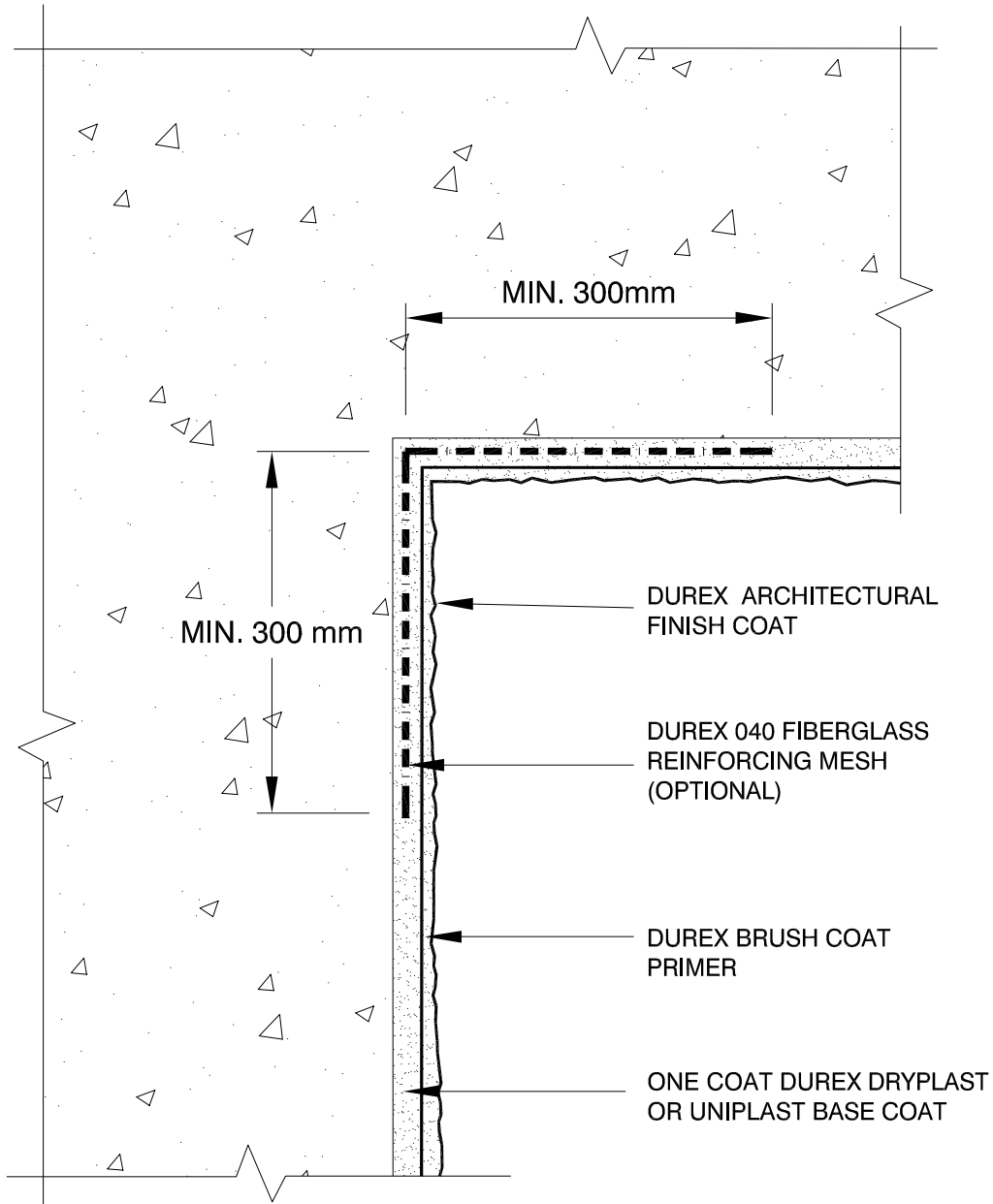
1-877-387-2266 - info@durabond.com - www.durabond.com

Durabond details are offered to assist in the development of project specific details; principles and variables incorporated in all details are the sole responsibility of the project professional(s).

*LCC-COU-01*

# Durex® Lite Coat Concrete

*INSIDE CORNER*



## DURABOND

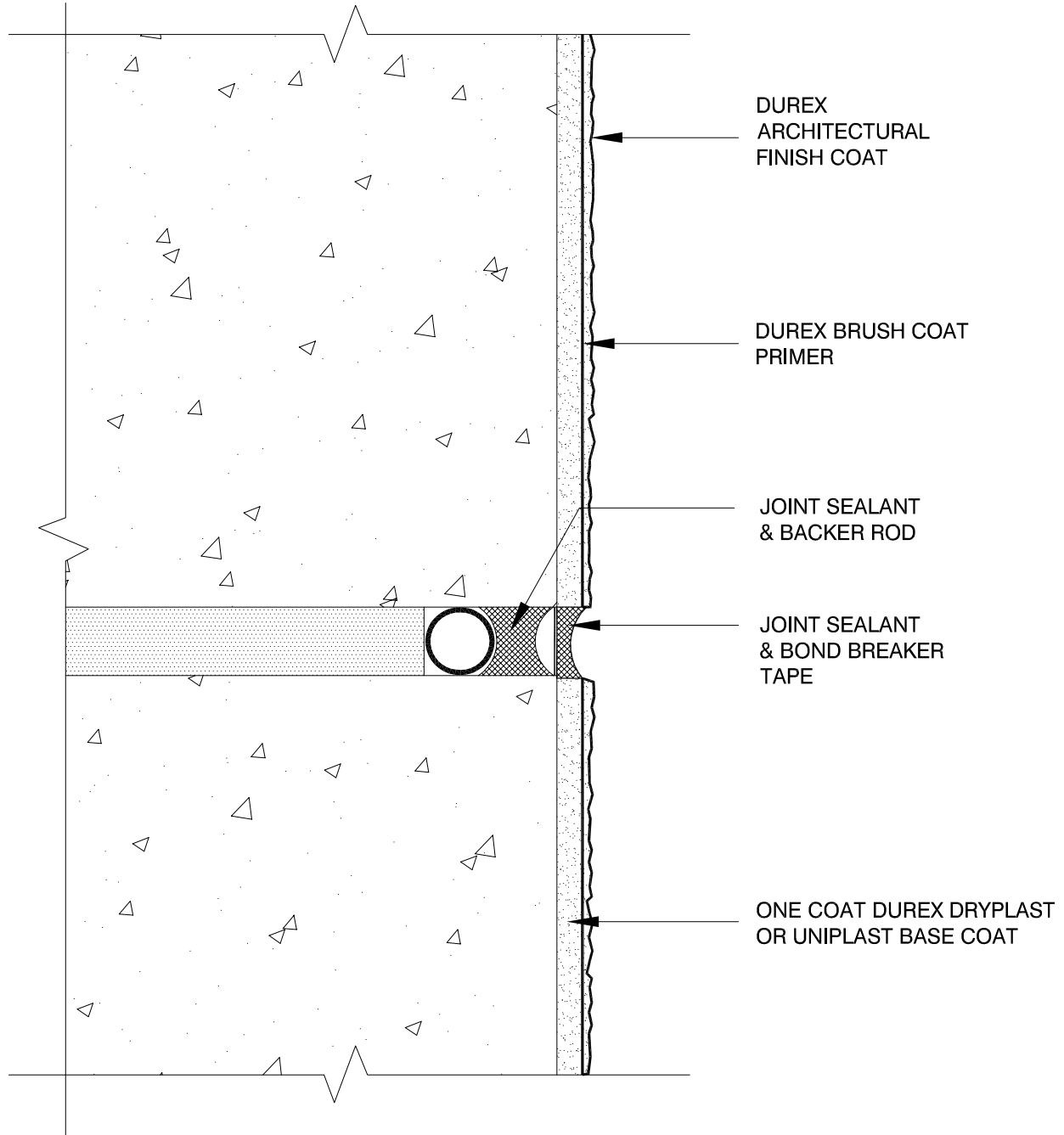
1-877-387-2266 - info@durabond.com - www.durabond.com

Durabond details are offered to assist in the development of project specific details; principles and variables incorporated in all details are the sole responsibility of the project professional(s).

*LCC-CIN-01*

# Durex® Lite Coat Concrete

## VERTICAL EXPANSION JOINT



**DURABOND**

1-877-387-2266 - info@durabond.com - www.durabond.com

Durabond details are offered to assist in the development of project specific details; principles and variables incorporated in all details are the sole responsibility of the project professional(s).

**LCC-VXJ-01**