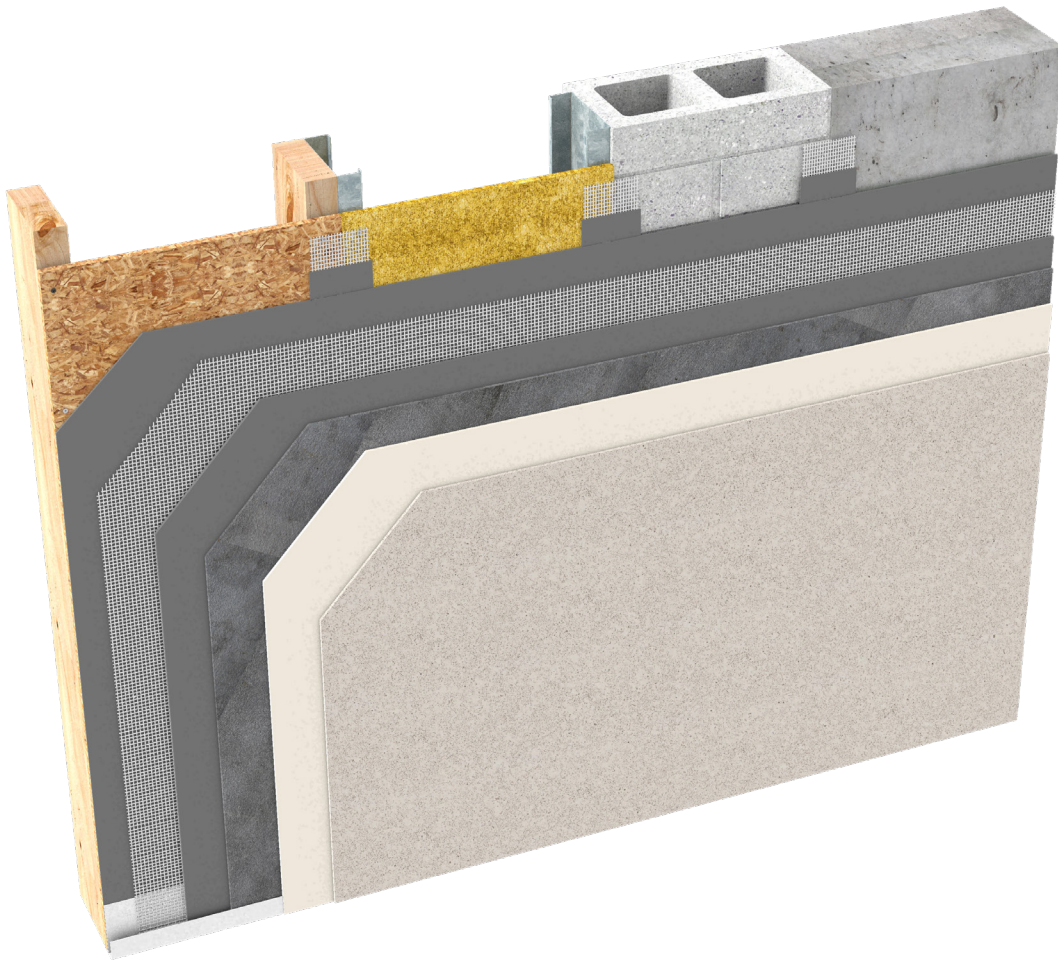


# Durex® Stucco Lite HM

*Fiberglass Reinforced Wall Cladding System  
For Pools & High Moisture Areas*



Waterproof



Moisture Barrier



Flexible



High Impact  
Resistance

Protect. Enhance. Outperform.

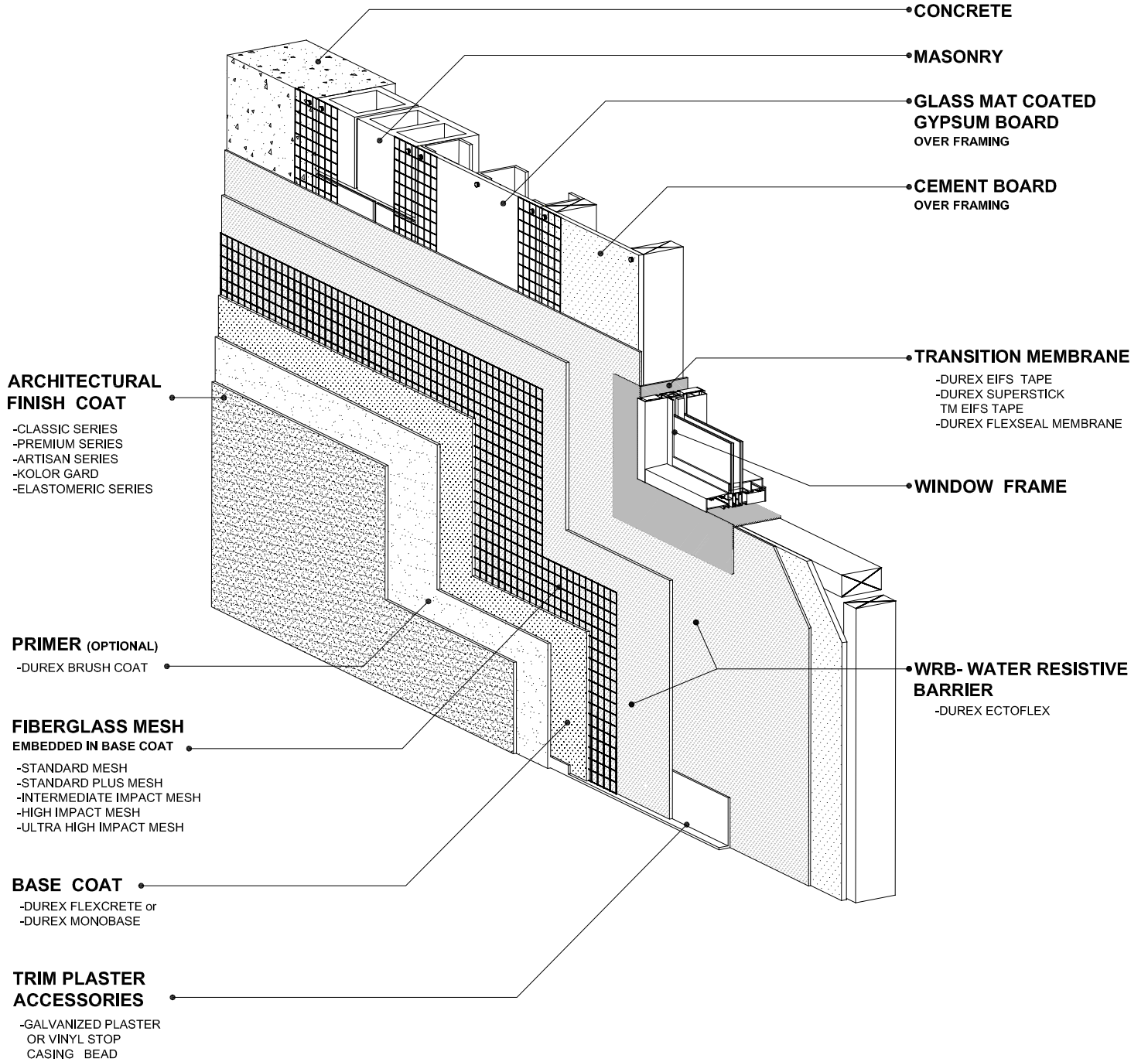
**DURabond**   
1-877-387-2266 info@durabond.com  
www.durabond.com

**SYSTEM DETAILS**

# Durex®

## Stucco Lite HM

*High Moisture Areas, Indoor Pools Moisture Management System*



# DURABOND

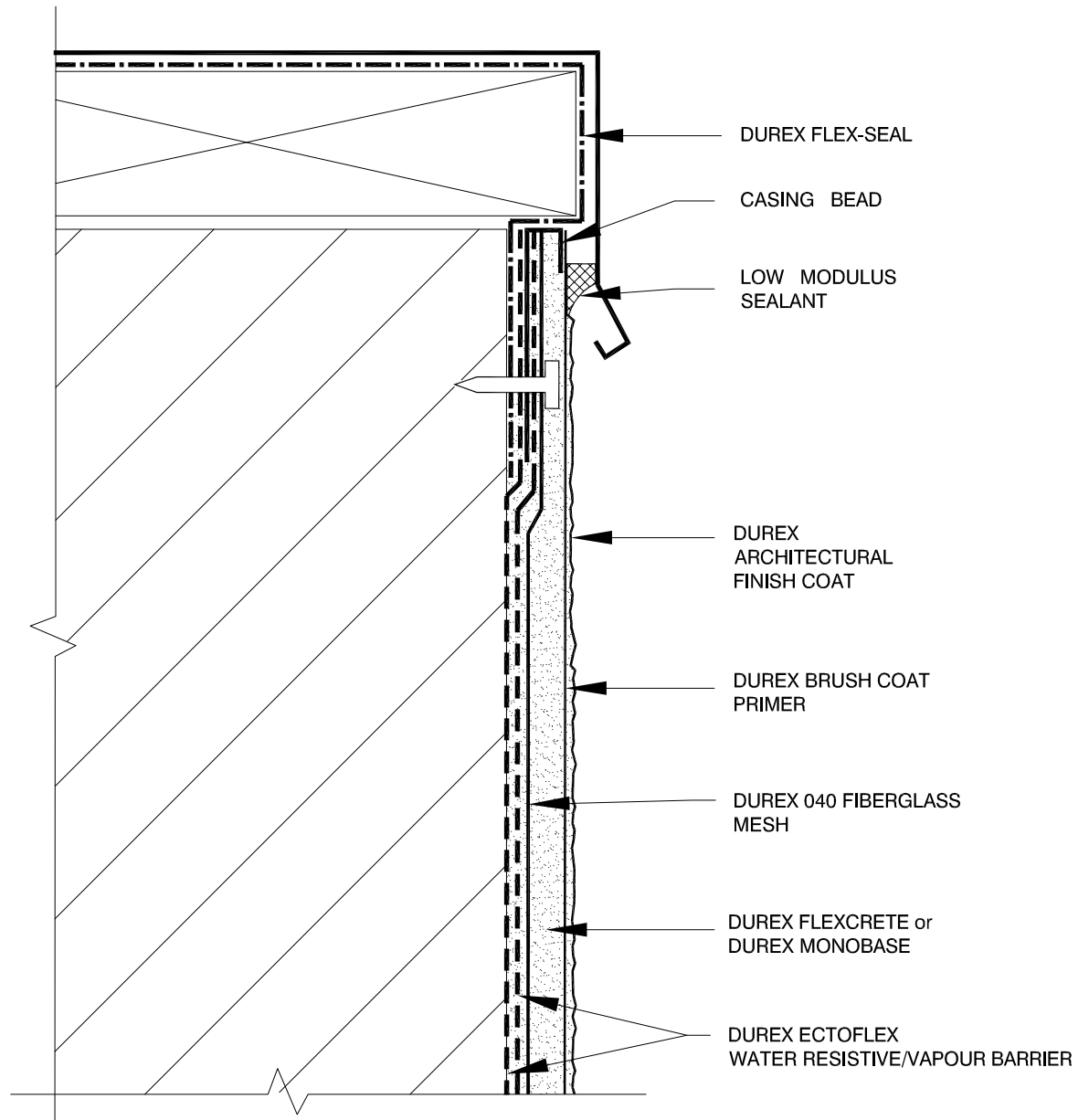
1-877-387-2266 - info@durabond.com - www.durabond.com

Durabond details are offered to assist in the development of project specific details; principles and variables incorporated in all details are the sole responsibility of the project professional(s).

*System Isometric  
& Components*

# Durex® Stucco Lite HM

## ROOF PARAPET



# DURABOND

1-877-387-2266 - info@durabond.com - www.durabond.com

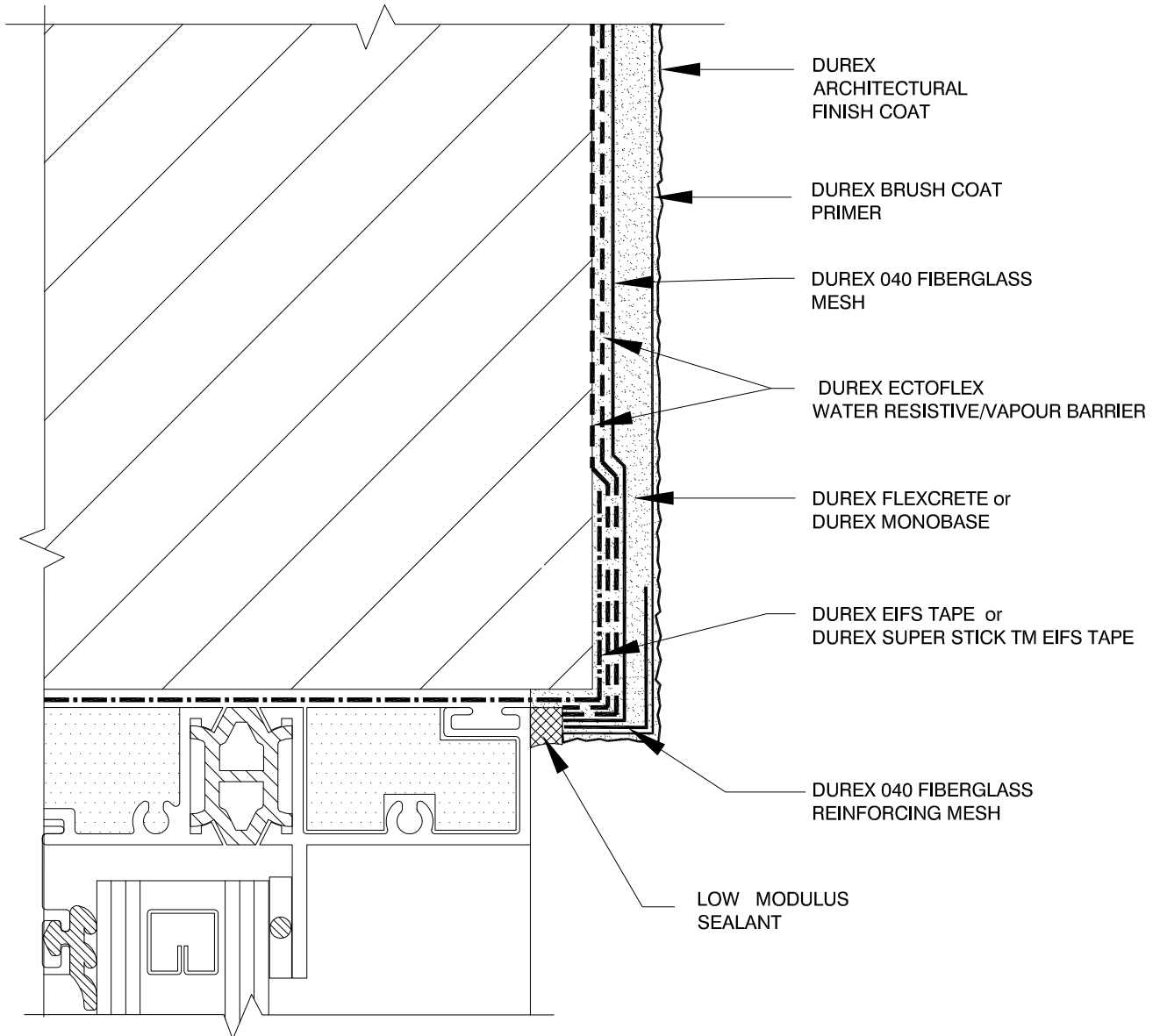
Durabond details are offered to assist in the development of project specific details; principles and variables incorporated in all details are the sole responsibility of the project professional(s).

## SLHM-PRT-01

# Durex®

## Stucco Lite HM

### WINDOW HEAD



# DURABOND

1-877-387-2266 - info@durabond.com - www.durabond.com

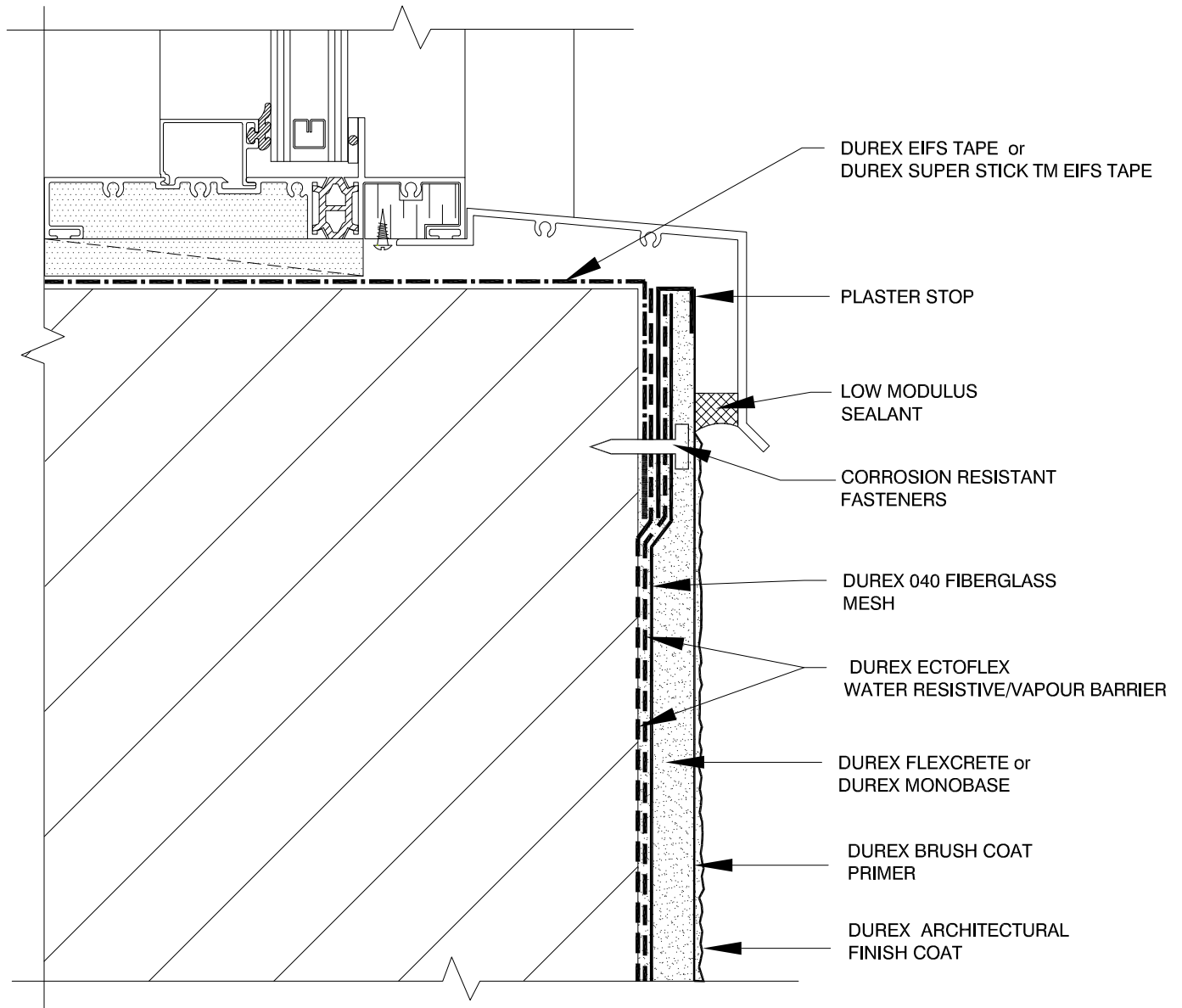
Durabond details are offered to assist in the development of project specific details; principles and variables incorporated in all details are the sole responsibility of the project professional(s).

### SLHM-WHD-01

# Durex®

## Stucco Lite HM

### WINDOW SILL

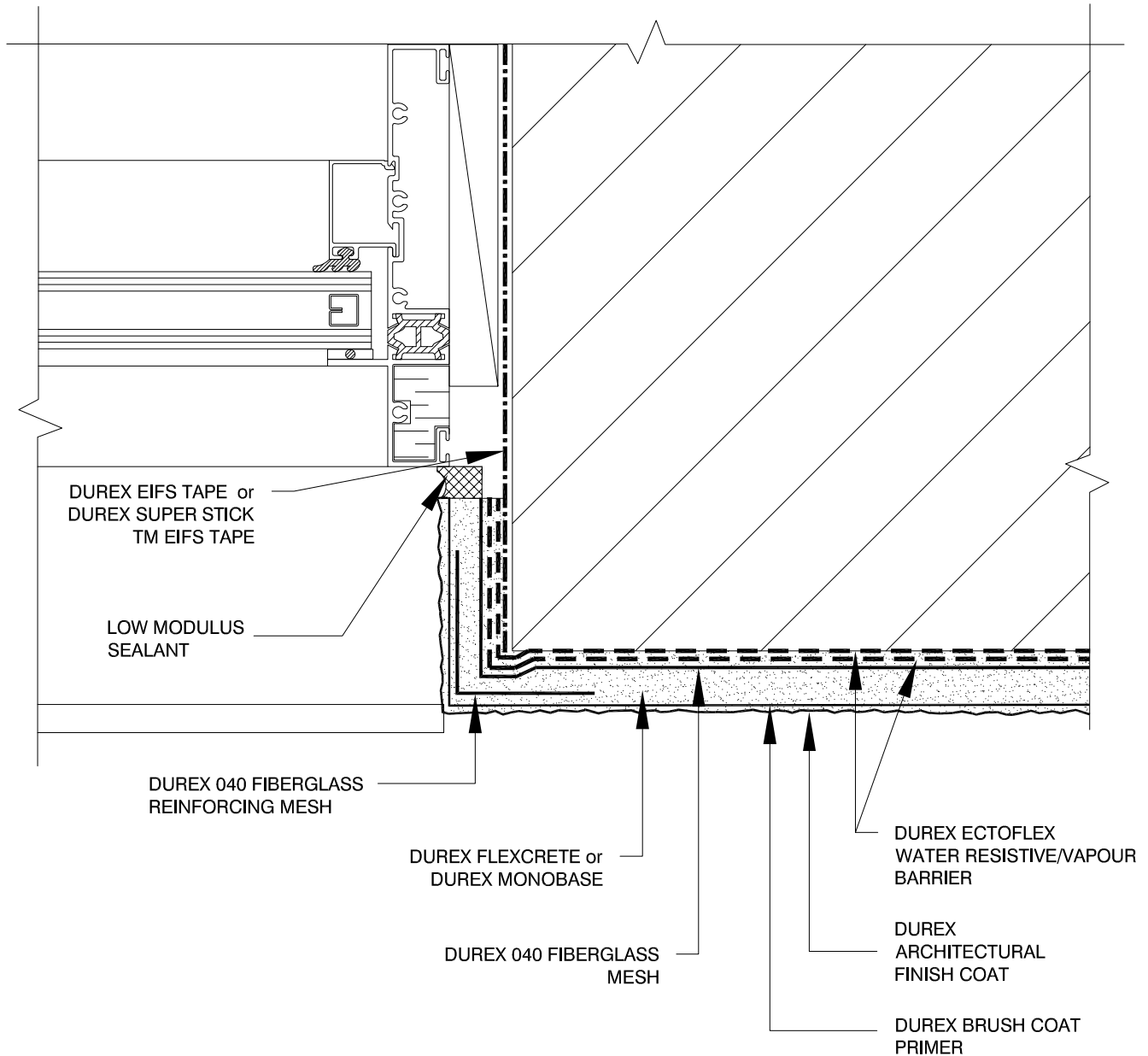


# DURABOND

1-877-387-2266 - info@durabond.com - www.durabond.com

Durabond details are offered to assist in the development of project specific details; principles and variables incorporated in all details are the sole responsibility of the project professional(s).

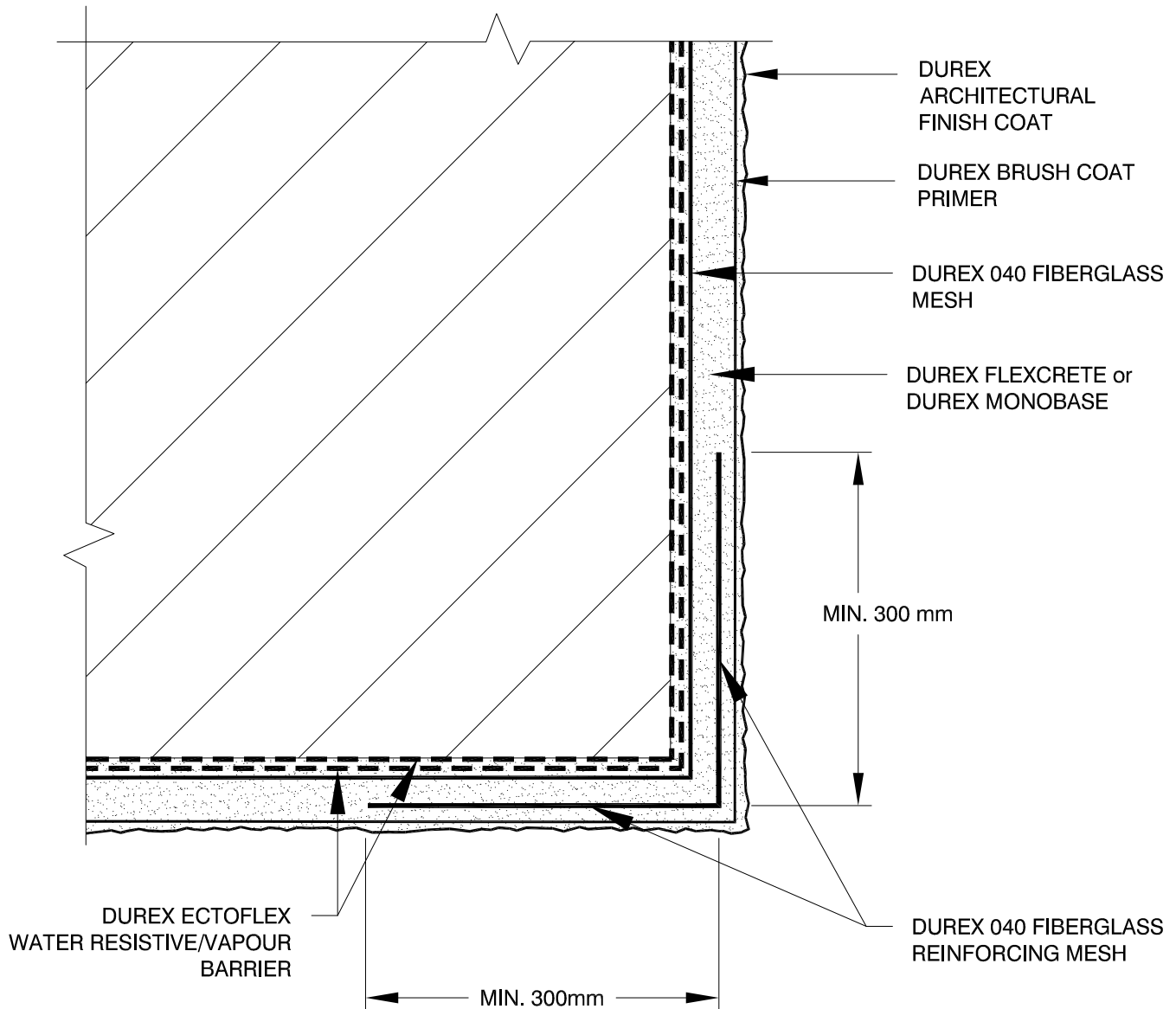
## SLHM-WSLHM-01



# Durex®

## Stucco Lite HM

### OUTSIDE CORNER



# DURABOND

1-877-387-2266 - info@durabond.com - www.durabond.com

Durabond details are offered to assist in the development of project specific details; principles and variables incorporated in all details are the sole responsibility of the project professional(s).

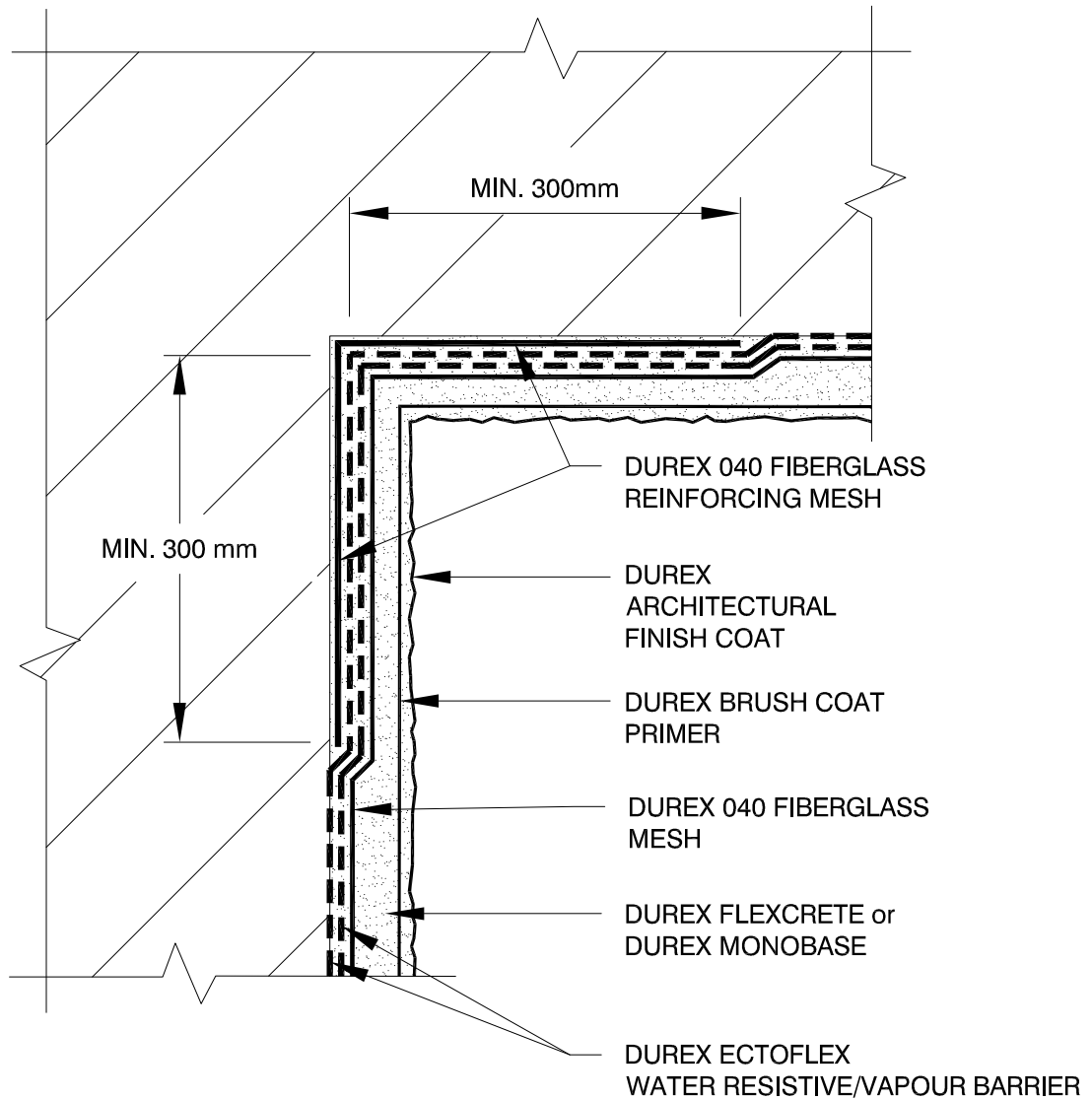
**SLHM-COU-01**



# Durex®

## Stucco Lite HM

*INSIDE CORNER*



# DURABOND

1-877-387-2266 - info@durabond.com - www.durabond.com

Durabond details are offered to assist in the development of project specific details; principles and variables incorporated in all details are the sole responsibility of the project professional(s).

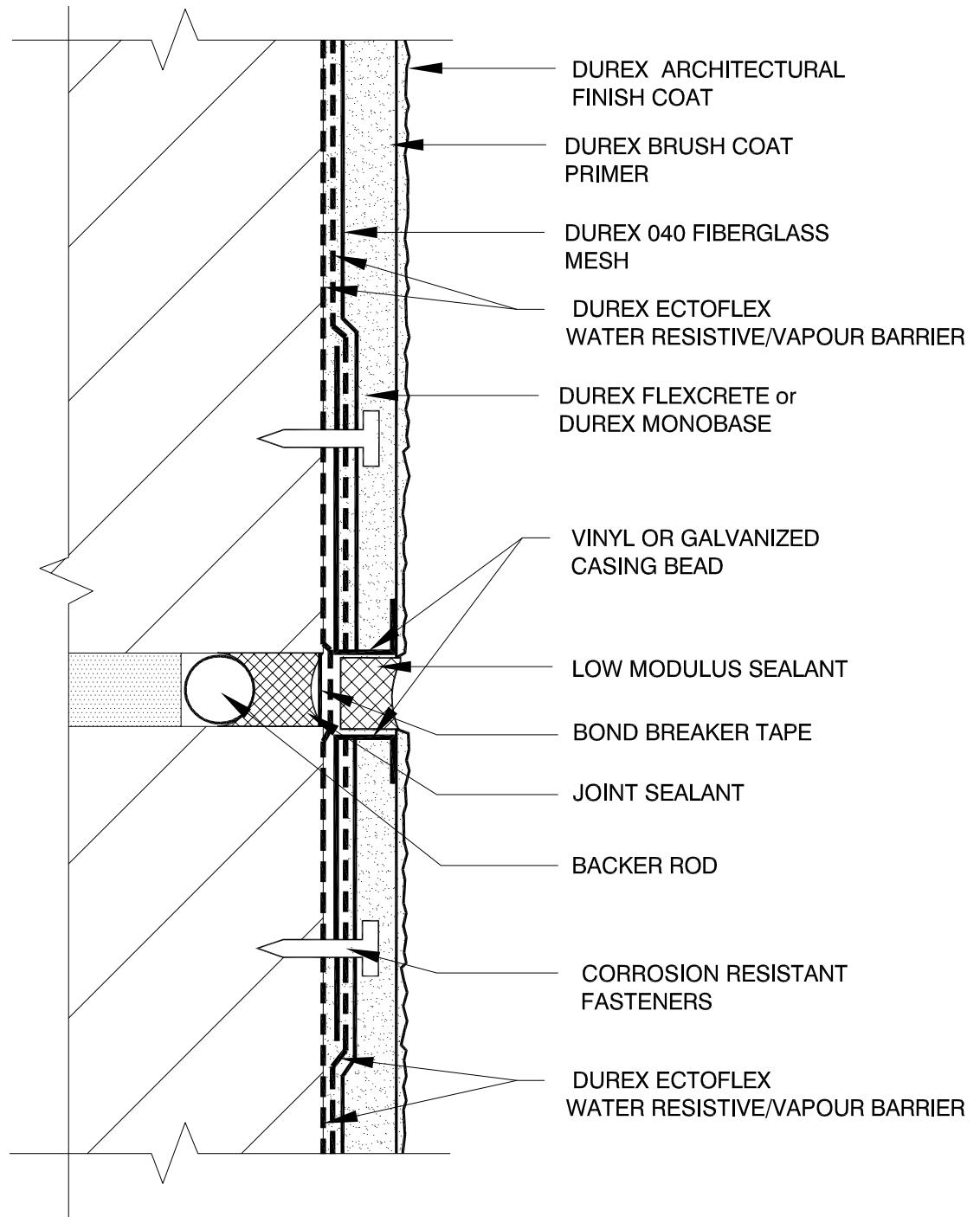
**SLHM-CIN-01**



# Durex®

## Stucco Lite HM

### HORIZONTAL EXPANSION JOINT



# DURABOND

1-877-387-2266 - info@durabond.com - www.durabond.com

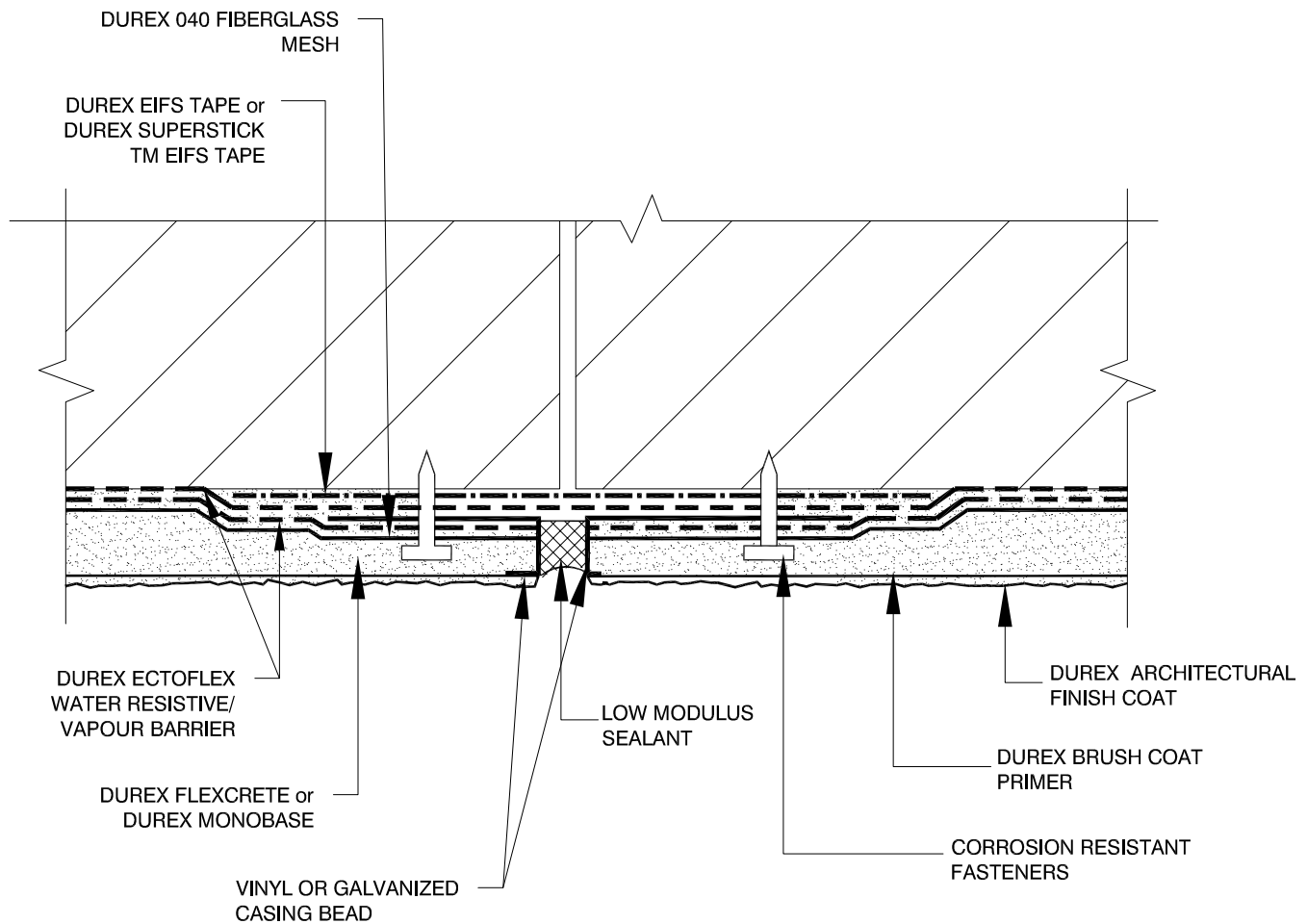
Durabond details are offered to assist in the development of project specific details; principles and variables incorporated in all details are the sole responsibility of the project professional(s).

**SLHM-HXJ-01**

# Durex®

## Stucco Lite HM

### VERTICAL EXPANSION JOINT



# DURABOND

1-877-387-2266 - info@durabond.com - www.durabond.com

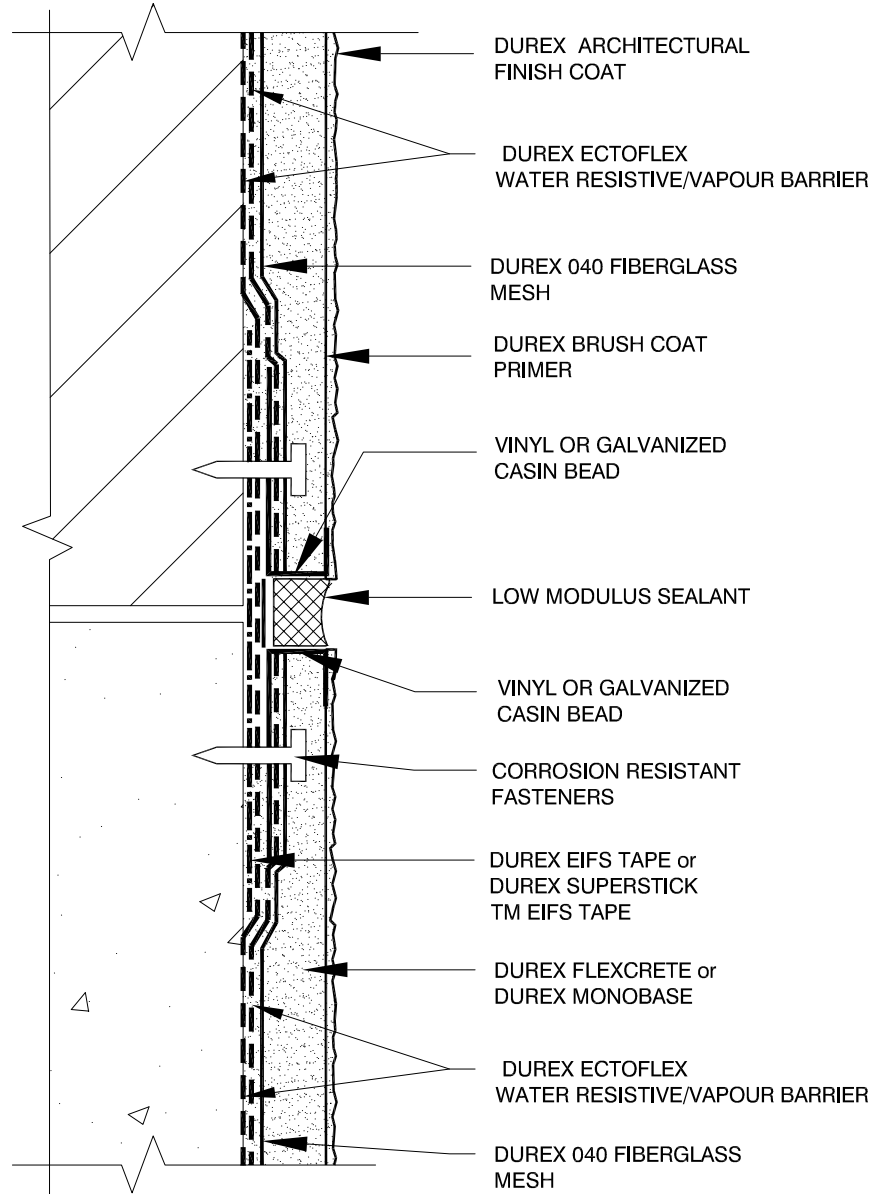
Durabond details are offered to assist in the development of project specific details; principles and variables incorporated in all details are the sole responsibility of the project professional(s).

**SLHM-VXJ-01**

# Durex®

## Stucco Lite HM

### EXPANSION JOINT



# DURABOND

1-877-387-2266 - info@durabond.com - www.durabond.com

Durabond details are offered to assist in the development of project specific details; principles and variables incorporated in all details are the sole responsibility of the project professional(s).

**SLHM-XPJ-01**