

ARCHITECTURAL FINISHES

MicroCement

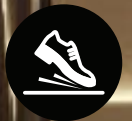
PREMIUM MICROCEMENT FINISH



EXCLUSIVE CANADIAN DISTRIBUTOR

MICRO >>>>>
CEMENTEC
READY TO USE

DURAbOND



CEMENTEC MICROCEMENT

Cementec for Walls

General application, ready-to-use microcement



NEW

Ready-to-use, versatile microcement wall finish

Finish surfaces with a contemporary and genuine style. Its adaptability makes it an ideal option for all types of environments, respecting the original essence of each place. In addition, it provides a sophisticated aesthetic that improves both the functionality and the beauty of the space, enhancing its quality and feeling of comfort.

IDEAL USE

Cementec Microcement Walls is ideal for interior walls in living and functional spaces like living rooms, hallways, kitchens, bathrooms, and offices. The finish can be customized to meet any aesthetic when used as a general or accent coating.

FEATURES

Extremely water and stain resistant

Provides a smooth and monolithic aesthetic

Ease of application and low maintenance costs

Seamless, hygienic finish and easy-to-clean and sterilise

Can be applied on almost any type of support, tiles, marble, self-levelling, plaster

COLOUR AVAILABILITY

Tinted (Any Colour)

IMPORTANT: Application on high contact areas must be treated with a finish coat sealer. Consult Durabond with any further questions.

Cementec for Floors

General floor application, ready-to-use microcement



NEW

Ready-to-use, durable microcement residential floor finish

Achieve the maximum evolution of cement floors that have been installed for so many years, and with Cementec we offer a step forward in technical and aesthetic qualities, ensuring that the floors combine beauty, resistance and durability.

IDEAL USE

Cementec Microcement for Residential Floors is ideal for interior residential rooms and walkways that desire to achieve an unfinished cement look without the weaknesses of unfinished cement - primarily dust and exposure to moisture. Durable and easy maintenance and patching provides security you can rely on.

FEATURES

Durable performance in moderate traffic applications like residential living spaces

Extremely water and stain resistant

Provides a seamless and monolithic aesthetic

Ease of application and low maintenance costs

Seamless, hygienic finish and easy-to-clean and sterilise

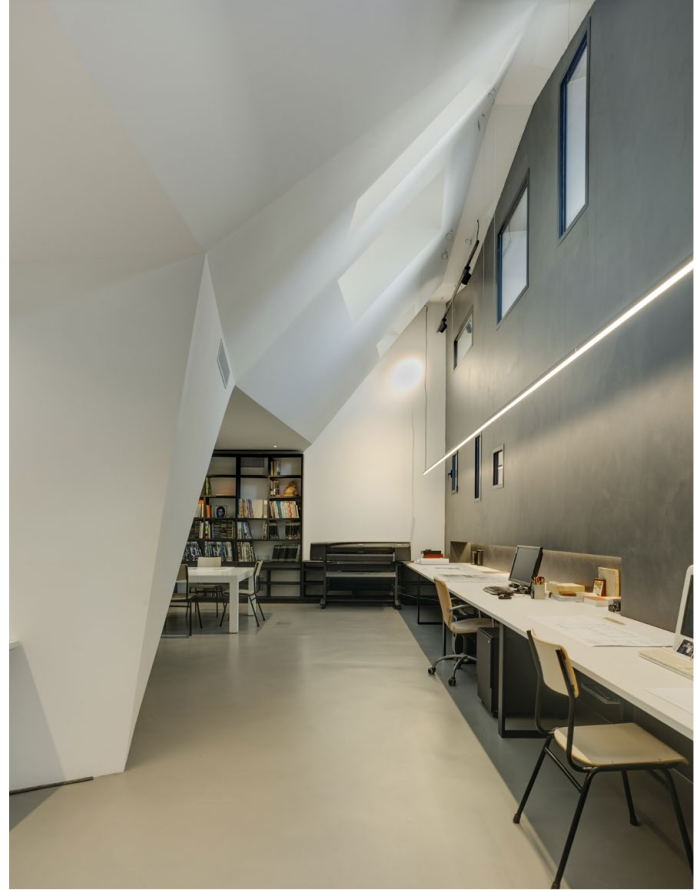
Can be applied on almost any type of support, tiles, marble, self-levelling, plaster

COLOUR AVAILABILITY

Tinted (Any Colour)

Cementec High Transit

Commercial floor application, ready-to-use microcement



NEW

Ready-to-use, extra durable microcement commercial floor finish

There are no longer excuses for not daring to enjoy a retail store or commercial office with microcement floors, even managing to develop the continuity of the same covering, starting on floors and climbing up the walls, stairs, units or any decorative element.

IDEAL USE

Cementec High Transit is ideal for interior floors subject to high pedestrian traffic, boasting extreme durability with the added advantage of water and stain resistance. Providing a beautiful flooring that is long-lasting, easy to maintain, and convenient to patch in the event of damage.

FEATURES

Extremely durable and high performance in high traffic environments i.e. retail and commercial spaces

Extremely water and stain resistant

Provides a seamless and monolithic aesthetic

Ease of application and low maintenance costs

Seamless, hygienic finish and easy-to-clean and sterilise

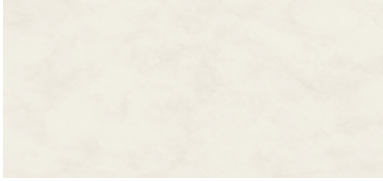
Can be applied on almost any type of support, tiles, marble, self-levelling, plaster

COLOUR AVAILABILITY

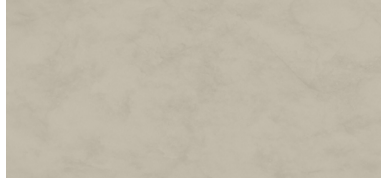
Tinted (Any Colour)

Cementec Colour Guide

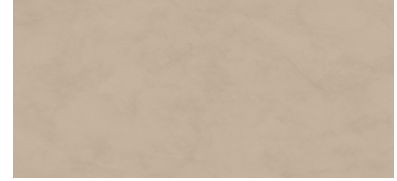
Popular Colours for Microcement



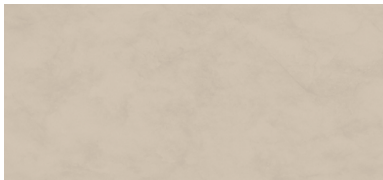
C-102
White Dove



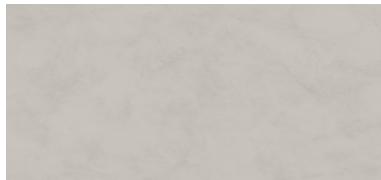
E-206
Pearl Grey



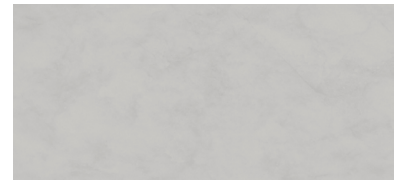
S-415
Coastal Sand



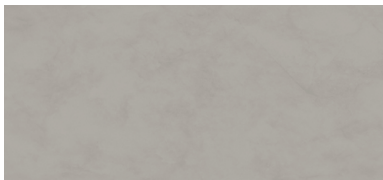
E-202
Burma Beige



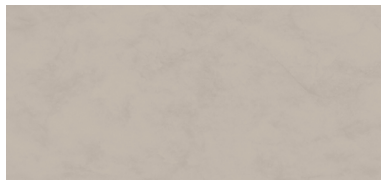
C-108
Collingwood



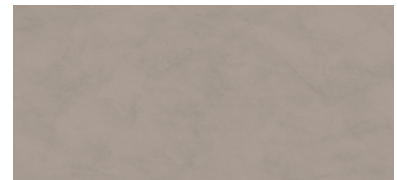
N-130
Nickel



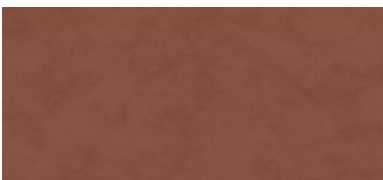
C-114
Thunder



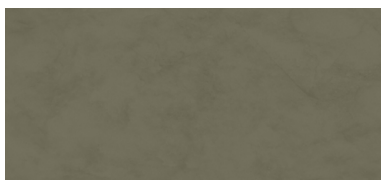
E-214
Zinc



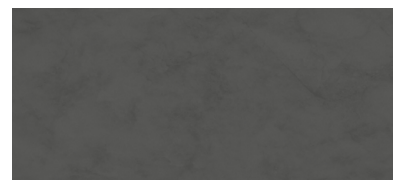
E-215
Putty



S-416
Terra Cotta



N-331
St. Peter Sage



C-128
Kendall Charcoal

Colour Chip samples represent actual finish colours as closely as possible. Colour appearance may vary by texture, lighting and method of application. Always request a textured sample before ordering. Custom colour matching available, ask your Durabond representative for more information.



Custom Colours Available

Durex® Dur-A-Comfort and DecoArt Finishes can be delivered in any colour so that you, as the architect or builder, can let the floor contribute to the overall design of the building.

COLOUR GUIDE RESOURCES

[Durabond Colour Guide](#) »

NEED SUPPORT?

Contact your local Durabond help desk or sales representative. Our team are experts in the technical and design features of our systems and products.

Our Team can even create custom solutions to your most specific requirements.

Cementec Texture Guide

An extremely versatile and creative finish

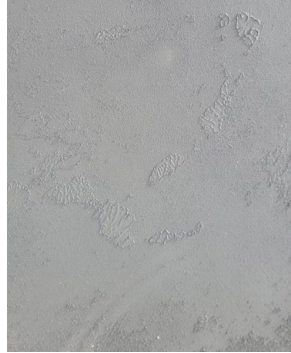
Cementec Walls can be customized in the following styles:



Medio (Standard)



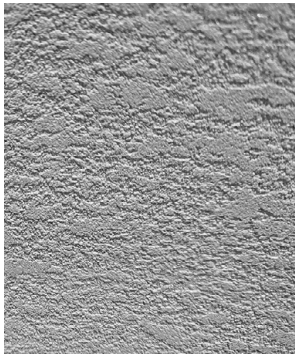
Water Washed



Distressed



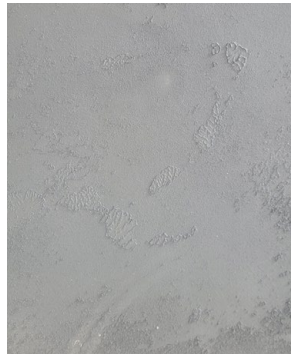
Freehand



Elephant Ear



Drag Down



Riverdance



World Map

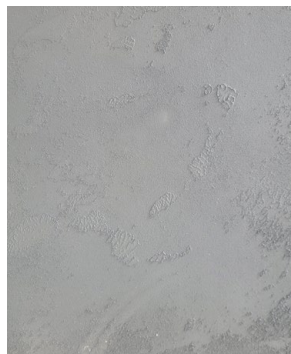
Cementec Floors can be customized in the following styles:



Medio (Standard)



Water Washed



Distressed

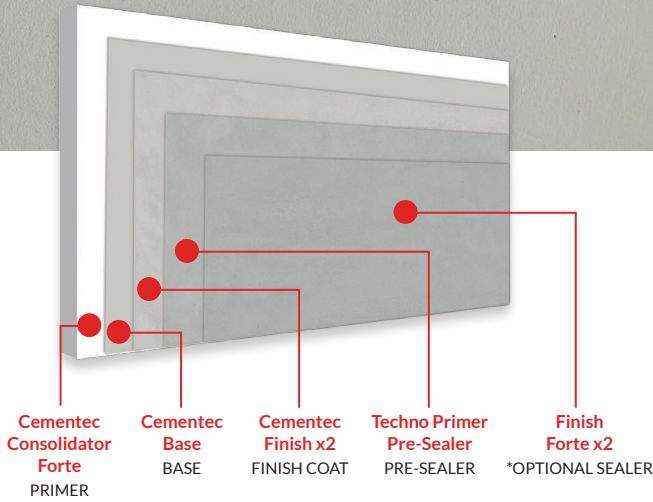


Freehand

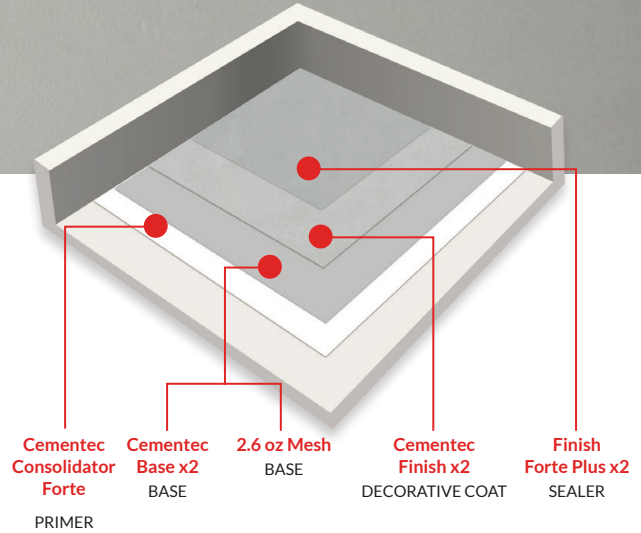
Technical Information

Overview for general applications

Cementec Walls



Cementec Floors



* ALTHOUGH OPTIONAL IN SOME APPLICATIONS, SEALER IS REQUIRED FOR HIGH CONTACT AREAS AND SURFACES

IMPORTANT: Sand surface after each base and decorative coat (if required). Substrate must be flat and smooth before installation. Substrate must be well secured and free from movement. Not recommended over moving substrates. Durabond/Cementec cannot warranty substrate cracks. Consult Durabond with any further questions.



COMPONENT	PRODUCT	COVERAGE	APPLICATION TEMPERATURE
Primer	Consolidator Forte (<i>Non porous substrates</i>) or Consolidator (<i>Porous substrates</i>)	1000 ft ² / 5L pail	10°C to 30°C
Base	Cementec Base x2	120 ft ² / 12 kg pail	10°C to 30°C
	2.6 oz Reinforcing Mesh (Only for Floor Applications)	400 ft ² / roll	10°C to 30°C
Finish Coat	Cementec Finish x2	250 ft ² / 12 kg pail	10°C to 30°C
Pre-Sealer (Only for Wall Applications)	Techno Primer Pre-Sealer	1000 ft ² / 5 L pail	10°C to 30°C
Sealer	For Walls: Finish Forte x2 For Floors: Finish Forte x2 or Finish Forte Plus x2	1000 ft ² / 5 L pail	10°C to 30°C



CEMENTEC MICROCEMENT

Application Instructions

Guidelines and best practices for Microcement

1. CORRECT & PRIME PREVIOUS SURFACES

1.1. CONTINUOUS SURFACE

If the surface where MICROCEMENT will be applied is smooth, level, and free of a major joints or cracks, please continue with this step. If not please proceed to **Step 1.B**.

Using masking tape, section off areas where MICROCEMENT will not be applied, including the edges of adjacent walls (as you would when painting a wall or floor).

Prepare the MICROCEMENT PRIMER as per the product instruction label located on the packaging.

Allow a cure and dry time of 3 - 4 hours after application.

REQUIRED TOOLS:

Masking tape

Microfiber roller

Brush

Plastic bucket

Consolidator

1.2. NON-CONTINUOUS SURFACE (TILES & FLOORS WITH JOINTS)

FILLING IN SUPPORT JOINTS

If the surface where MICROCEMENT will be applied contains joints or cracks, it will need to be corrected before proceeding with application.

Using masking tape, section off areas where MICROCEMENT will not be applied, including the edges of adjacent walls (as you would when painting a wall or floor).

Using a ROLLER and BRUSH, apply 1 coat of MICROCEMENT BASE or FINO across support joints and cracks. Flexible caulking should be used when covering flexible joints.

Allow a cure and dry time of 3 - 4 hours after application.

Once the application has fully dried, use a SANDING MACHINE to smooth and level the covered areas.

REQUIRED TOOLS:

Masking tape

Spatula

Flexible caulking

Plastic bucket

Sanding Machine

Base or Fino

SEALING THE JOINTS

Once the Joints have been covered and the surface is smooth and continuous, we must seal the applied product before proceeding to the full application.

Prepare the MICROCEMENT SEAL as per the product instruction label located on the packaging.

Lay down the FIBERGLASS MESH across the area to be covered.

Apply 1 Coat of MICROCEMENT PRIMER over the area.

Allow a cure and dry time of 12 - 24 hours after application.

REQUIRED TOOLS:

Microfiber roller

Brush

Plastic bucket

Seal (A+B)

Fiberglass Mesh

PLEASE NOTE

The instructions in this brochure are general guidelines for applications. The guidelines may change depending on the MICROCEMENT system and project conditions.

2. MICROCEMENT APPLICATION

2.1. APPLYING THE BASE COAT

Prepare the MICROCEMENT BASE as per the product instruction label located on the packaging.

Using a SPATULA or TROWEL, apply 2 coats of MICROCEMENT BASE or FINO . Allow enough drying time after each coat, approximately 4 - 6 hours total.

When the BASE coats have dried, use a SANDING MACHINE to create a smooth and level surface.

Allow a cure and dry time of 12 -24 hours after application.

REQUIRED TOOLS:

Electric mixer

Spatula / Trowel

Colour Pigment

Plastic bucket

Base or Fino

Sanding machine

2.2. APPLYING THE FINISH COAT

Prepare the MICROCEMENT FINISH COAT according to the instructions on the product packaging. The FINISH coat is available in 3 options:

Fino | Water Resistant | High Traffic

Using a SPATULA or TROWEL, apply 2 coats of MICROCEMENT FINISH coat . Allow enough drying time after each coat, approximately 12 hours total.

When the FINISH coats have dried, use a SANDING MACHINE to create a smooth and level surface.

Allow a cure and dry time of 24 - 48 hours after application.

REQUIRED TOOLS:

Electric mixer

Spatula / Trowel

Colour Pigment

Plastic bucket

Fino or
Water Resistant or
High Traffic

Sanding machine

2.3. APPLYING THE TOP COAT

The MICROCEMENT TOP COAT ensure the finish application is sealed for durability and longevity. FINISH FORTE offers general, long-lasting protection while FORTE PLUS offers the additional benefit of water and chemical resistance.

Prepare the FINISH FORTE or FORTE PLUS according to the instructions on the product packaging.

Using a ROLLER and BRUSH, apply 2 coats of MICROCEMENT FINISH coat . Allow enough drying time after each coat, approximately 4 - 6 hours total.

Allow a cure and dry time of 48 hours after application.

REQUIRED TOOLS:

Mircofiber Roller

Brush

Plastic bucket

Forté or
Forté Plus

DURABOND

The recommendations and information in this chart/document are for the application of Durex® products manufactured by Durabond, and are based on practical knowledge for general site conditions and uses. This chart is to be used as a reference guide only to identify and display the various products for general, non-site specific applications for a variety of installations. Differences in site conditions, preparations, materials are continuously variable and unknown.

As such, no warranty, guarantee or legal binding relationship is implied whatsoever with these products and systems and no guarantee can be made to their performance. In addition, preparation and condition of the substrate is of such utmost importance that a Durabond Technical Representative must be notified prior to installation of any of the aforementioned products and/or systems.

An installer must always prepare the surface to the recommendations found on the current data sheet of each product written and produced by Durabond Technical Coatings Limited. These data sheets can be obtained from Durabond's website, www.durabond.com, or by contacting a Technical Sales Representative directly.

TORONTO OFFICE

55 Underwriters Road, Toronto, ON M1R 3B4
T (416) 759-4474 | F (416) 759-4470

MISSISSAUGA OFFICE

6178 Netherhart Road, Mississauga, ON L5T 1B7
T (905) 565-9283 | F (905) 565-9365

WESTERN CANADA OFFICE

14604 124 Ave NW, Edmonton, AB T5L 3B3
T (780) 451-6364 | F (780) 453-9056

TOLL FREE

TF 1 877 387-2266 | E info@durabond.com

durabond.com