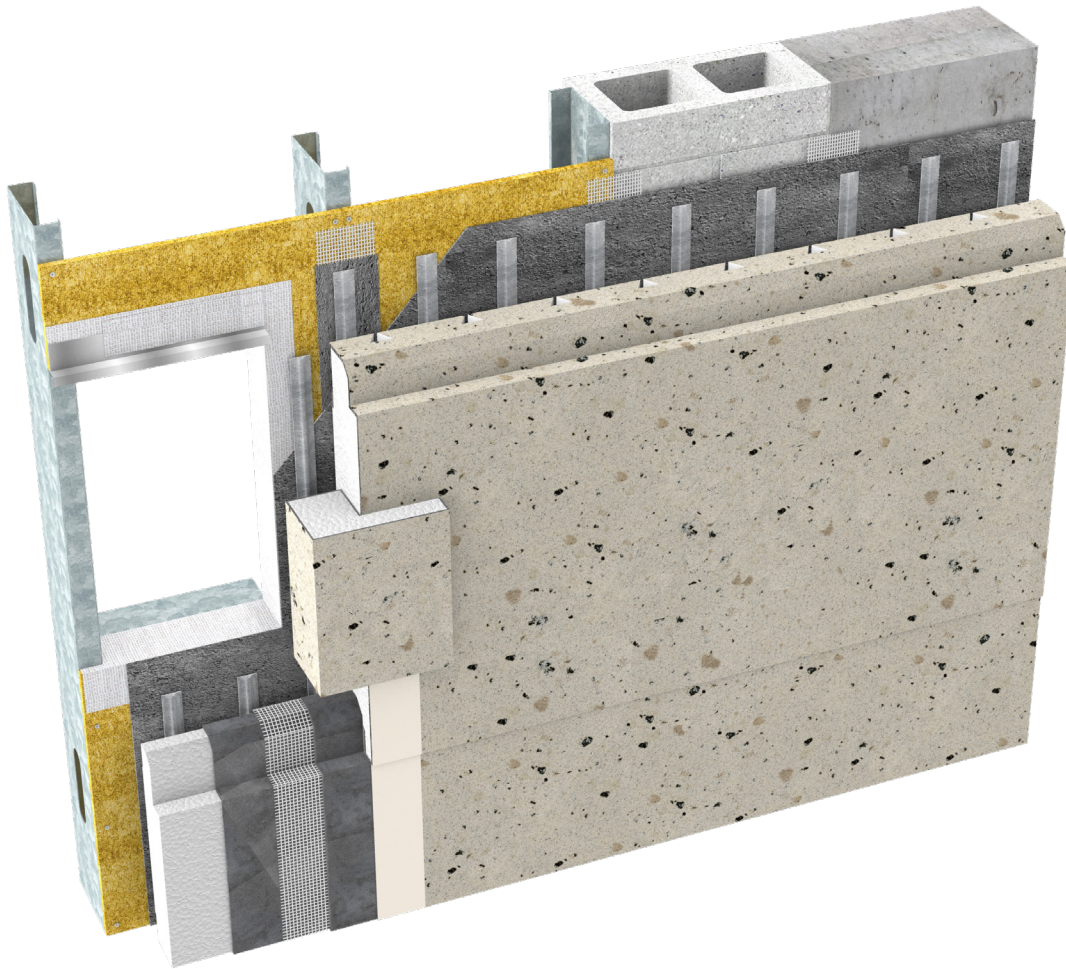


Durex® Cladlite

Prefabricated Modular & Site Modifiable
Cladding Panel System



CCMC 13103-R

CAN/ULC S716.1 Materials

CAN/ULC S716.2 Installations

CAN/ULC S716.3 Design Application

G.D.D.C Factor = 15%

C.I Factor = 0.65 RSI/Inch Type 1 EPS

= 0.70 RSI/Inch Type 2 EPS



Prefab Cladding



Lightweight



Drained



Cost Effective

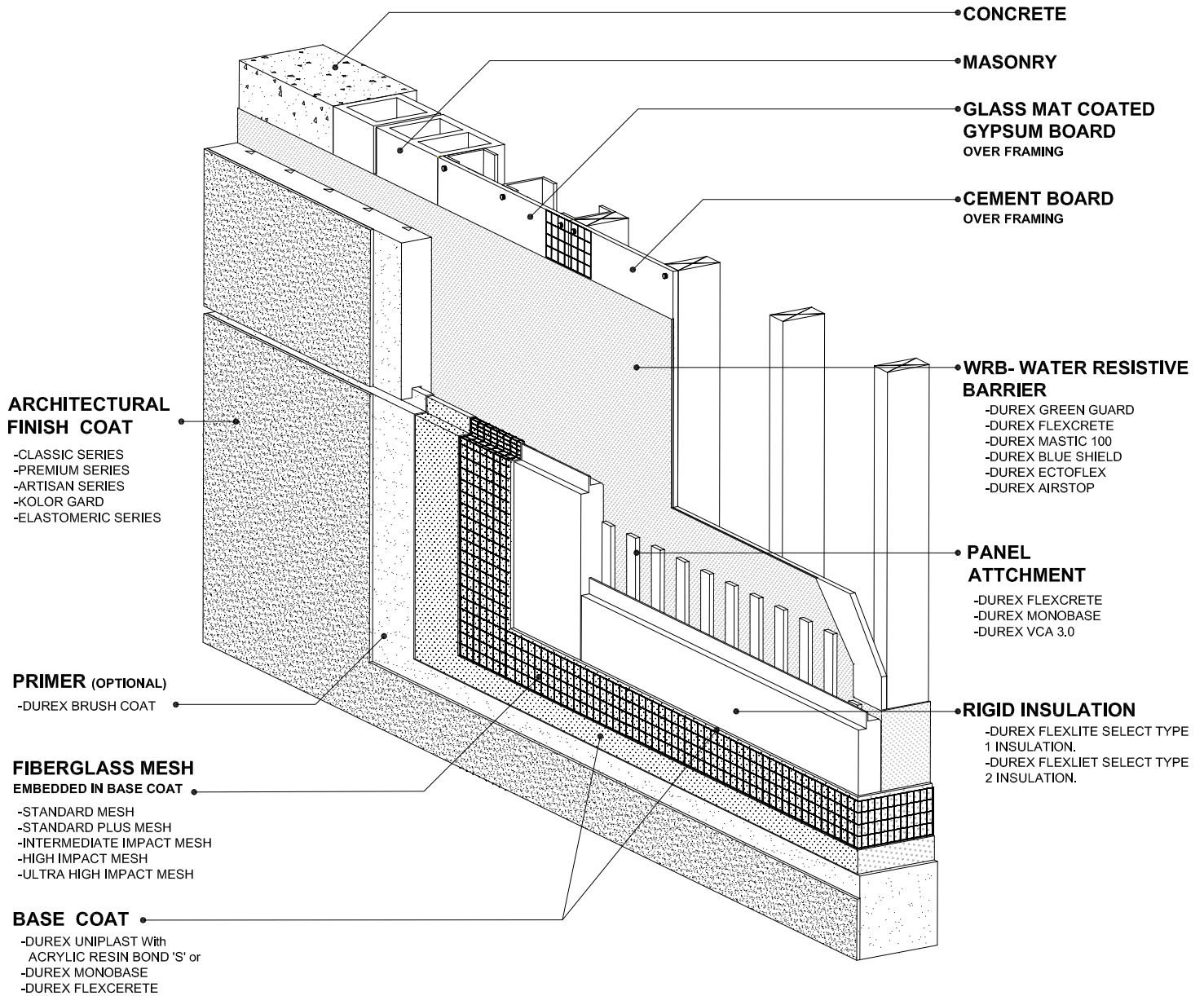
Protect. Enhance. Outperform.

DURAbond 
1-877-387-2266 info@durabond.com
www.durabond.com

SYSTEM DETAILS

Durex® Cladlite

Prefabricated Structural Cladding Panel

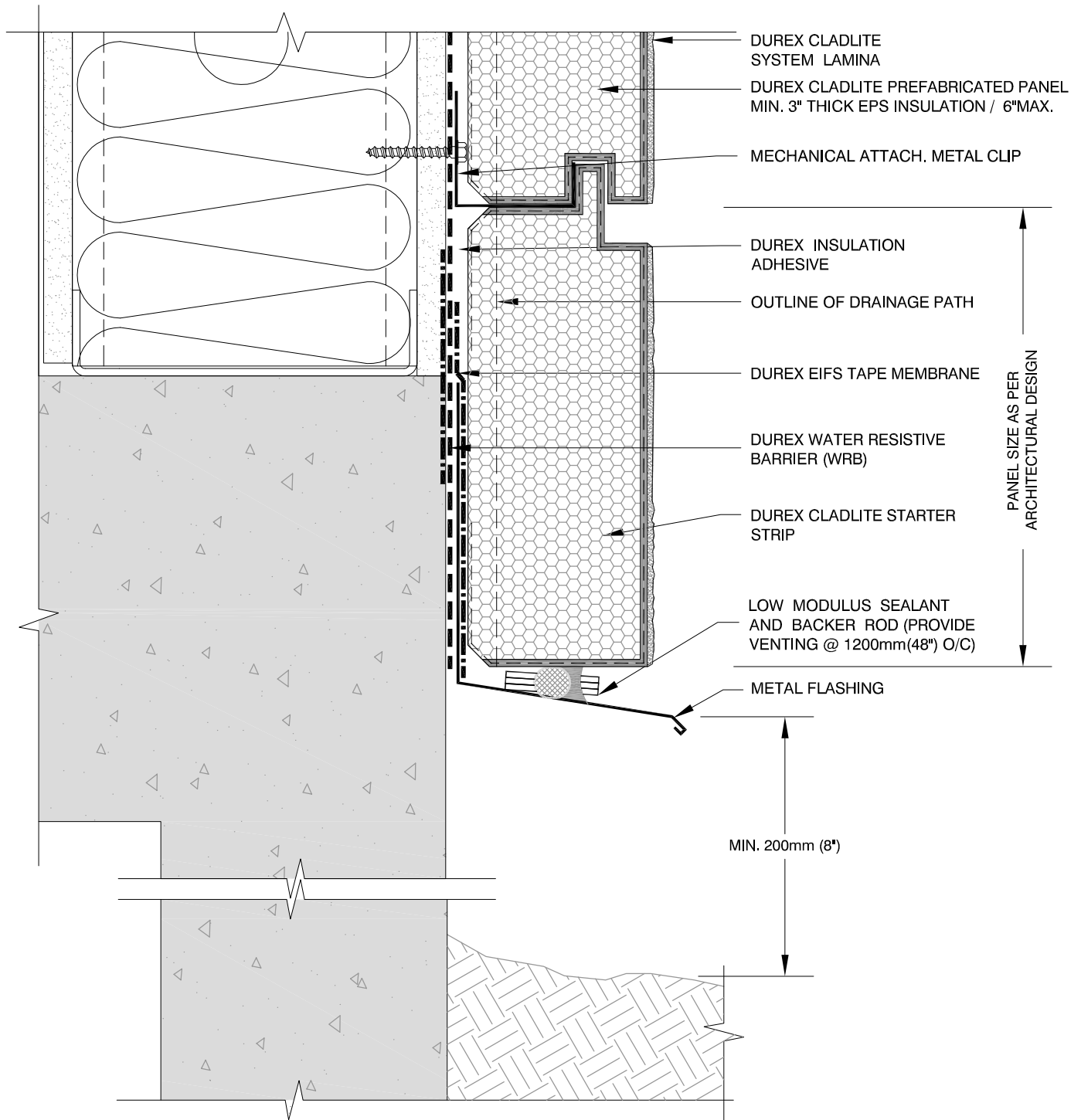


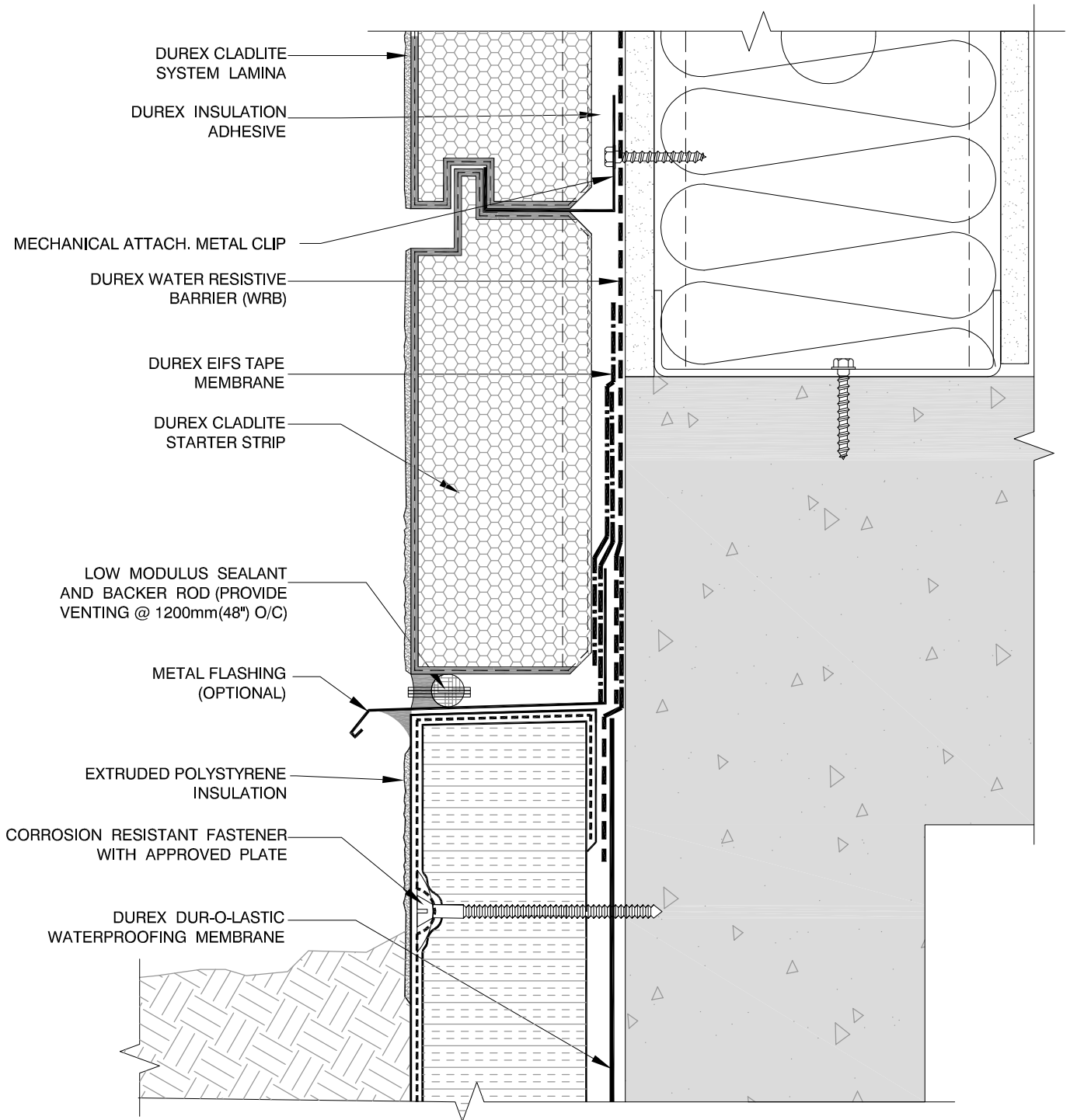
DURABOND

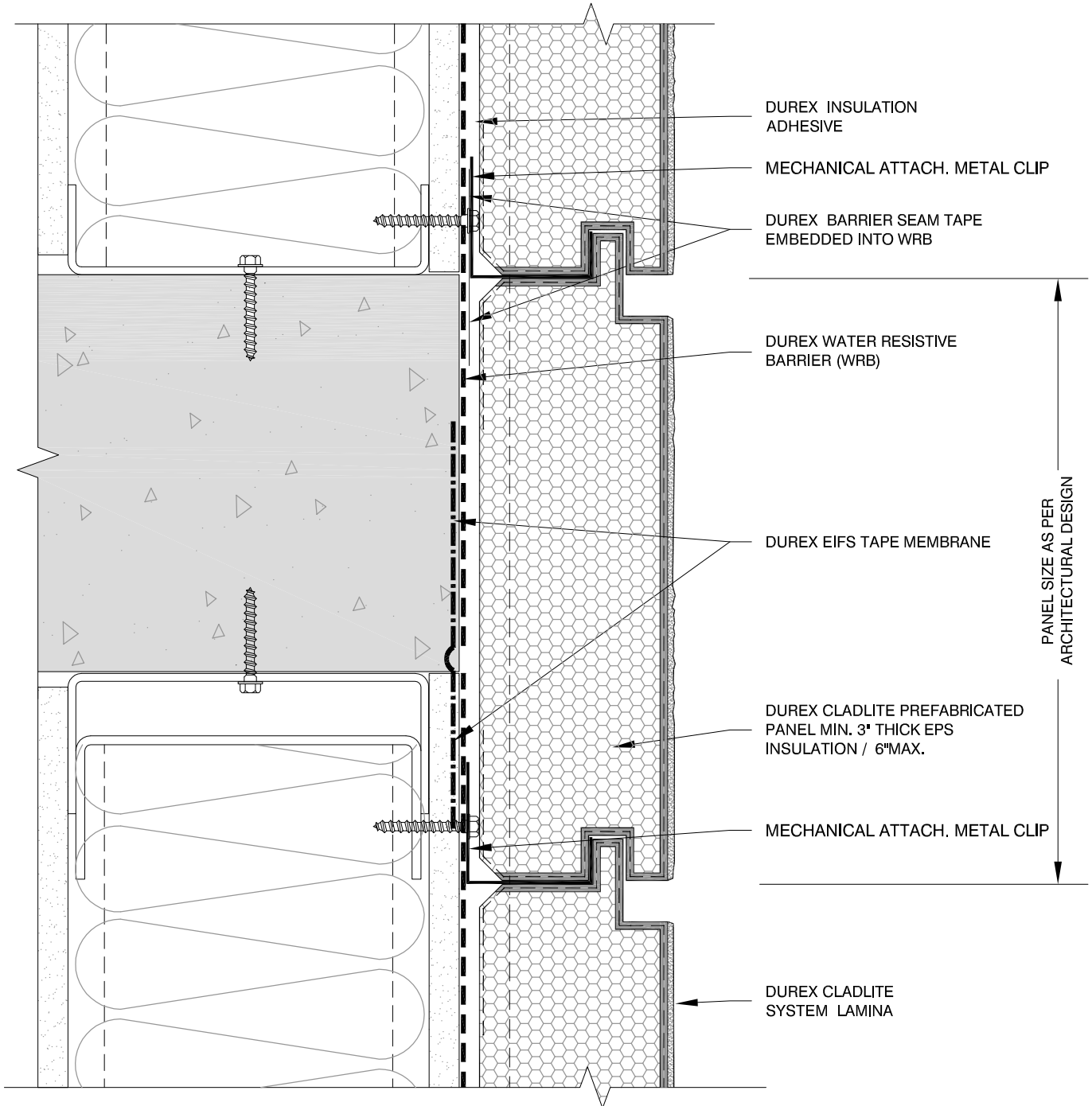
1-877-387-2266 - info@durabond.com - www.durabond.com

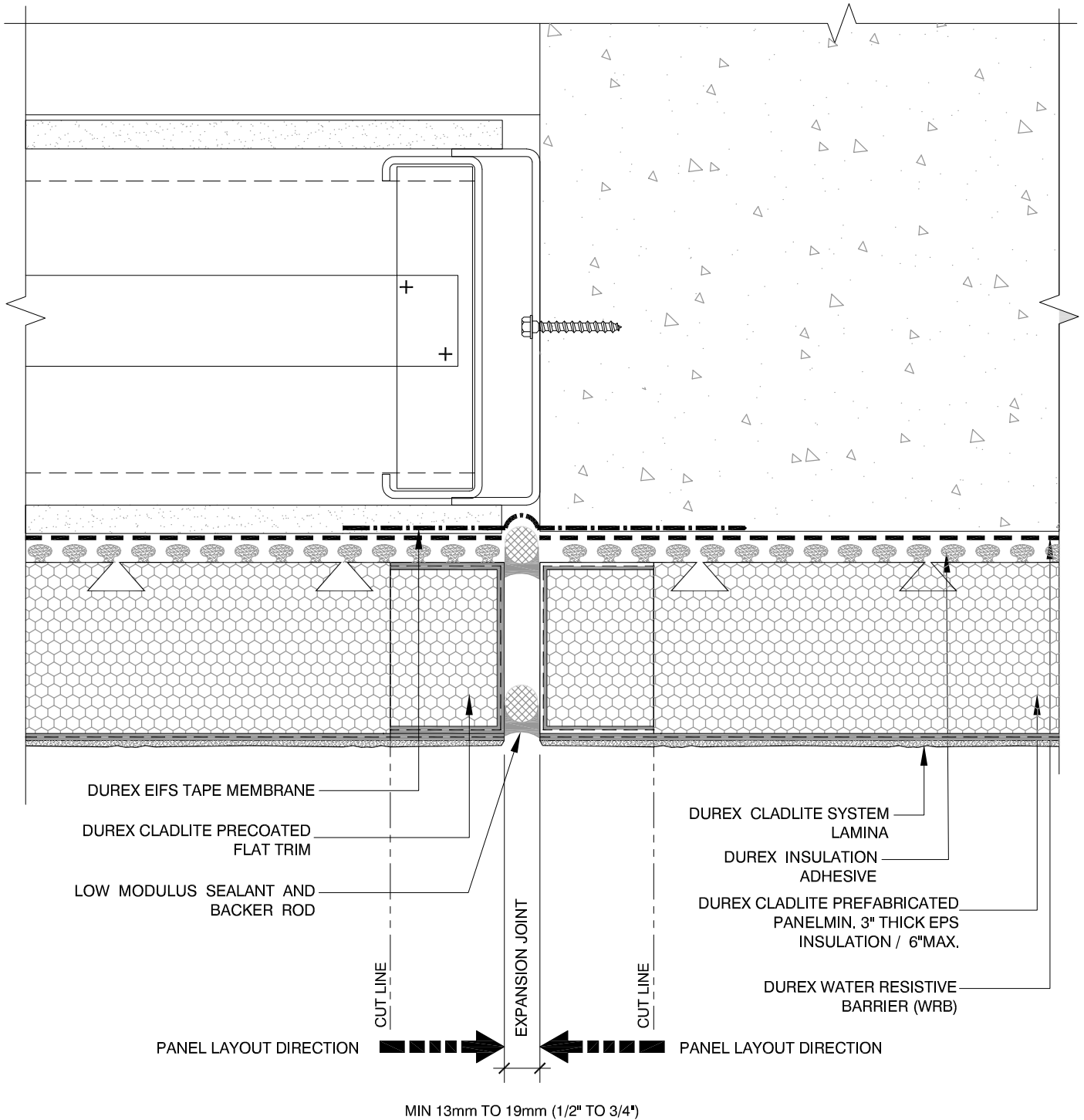
Durabond details are offered to assist in the development of project specific details; principles and variables incorporated in all details are the sole responsibility of the project professional(s).

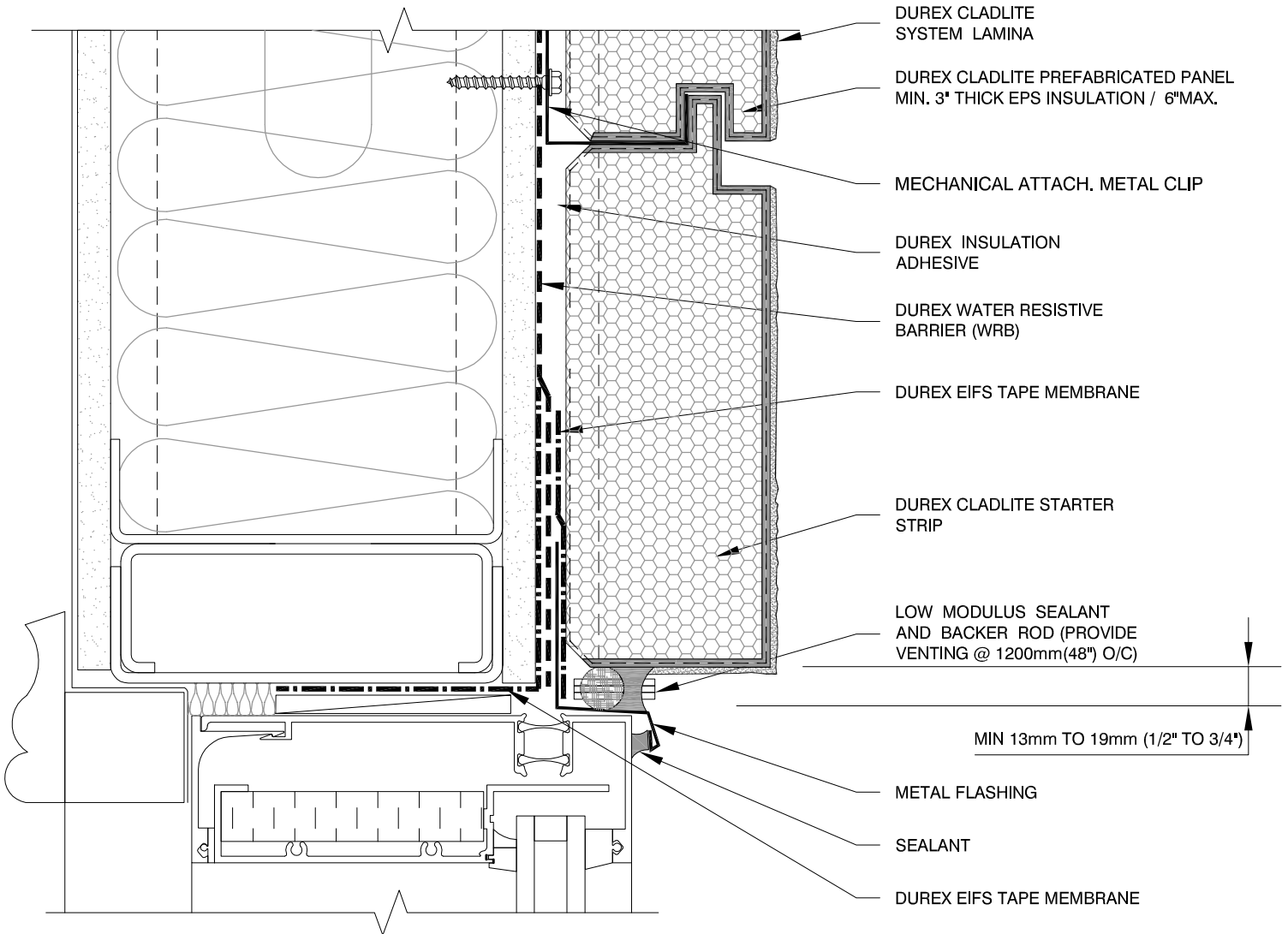
System Isometric & Components

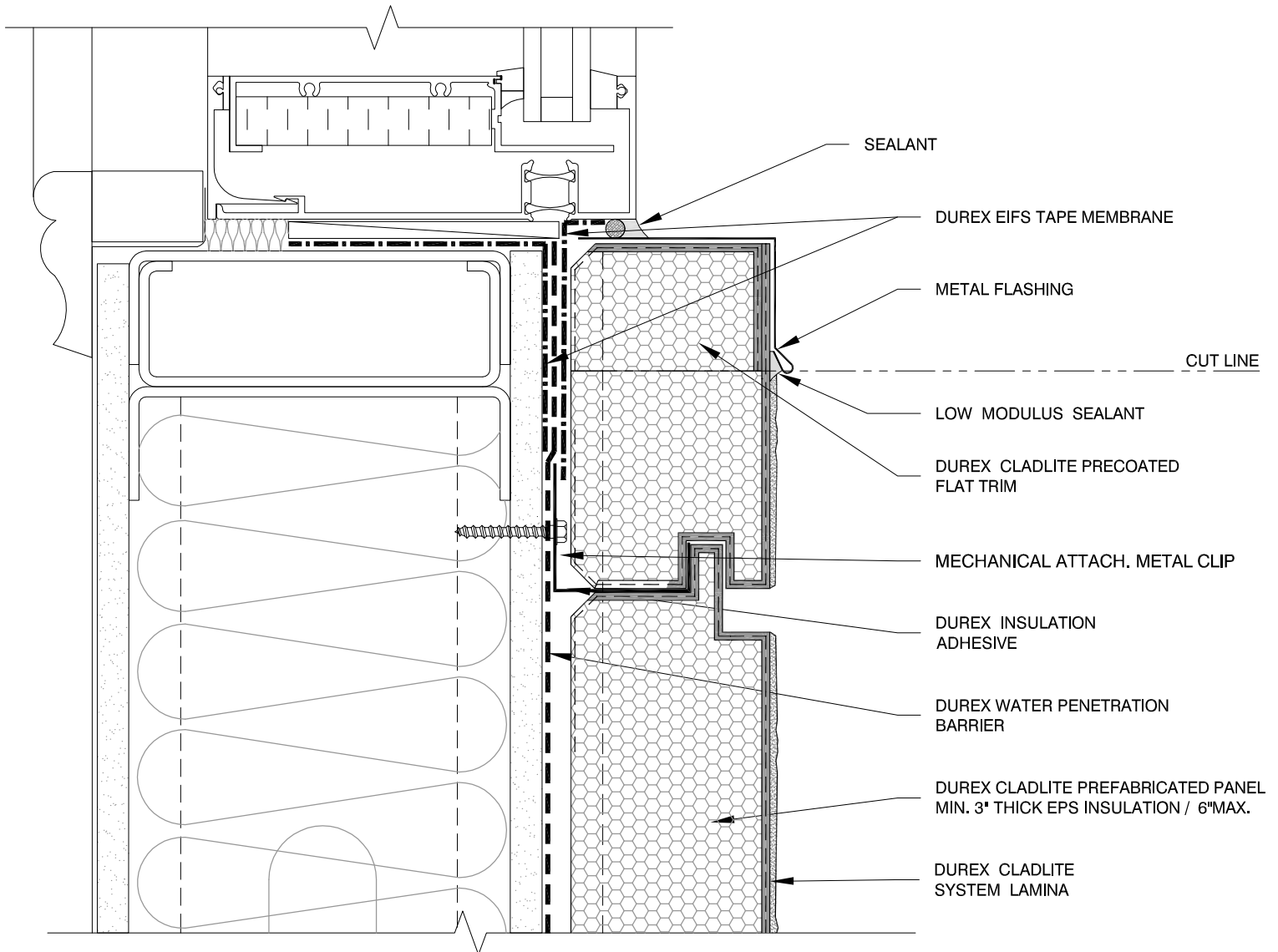






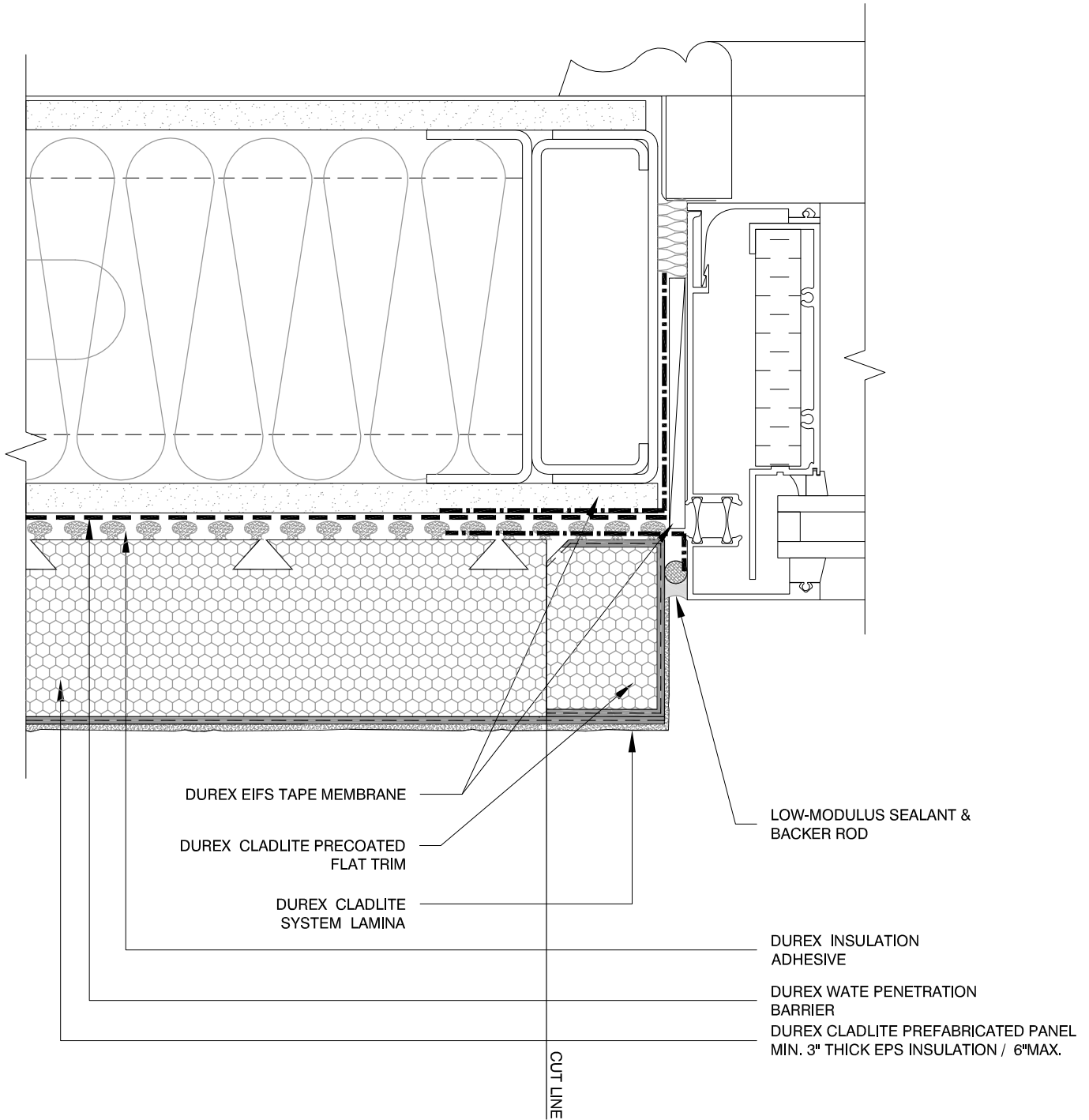






Durex® Cladlite

WINDOW JAMB W/ CUT TO FIT MOD.



DURABOND

1-877-387-2266 - info@durabond.com - www.durabond.com

Durabond details are offered to assist in the development of project specific details; principles and variables incorporated in all details are the sole responsibility of the project professional(s).

CL-WJM-01

