



Durex[®]

CENTURYSTONE

unparalleled elegance



Durex[®] CENTURYSTONE

Durex[®] Century Stone is a high build, multi-coloured, protective and decorative coating consisting of coloured aggregates and oversized mica flakes embedded in a clear, 100% acrylic resin. Its distinctive features allow the designer to create attractive and unique surfaces.

Application: Metal Trowel

Coverage: 11.1 m² (120 ft²/pail)

Primer is required.



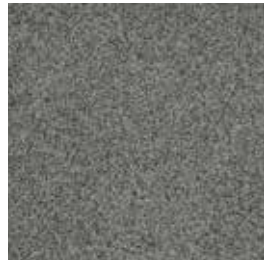
Printed samples represent actual finish colours as closely as possible. Colour appearance may vary by texture, lighting and method of application. Always request a textured sample before ordering.



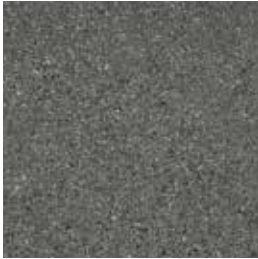
Vintage Carrera
Primer: Q-851



Mountain Cliff
Primer: 1004-3D



Nystad Grey
Primer: 1013-1L



Rolling Thunder
Primer: Q-851



Frontier
Primer: Q-851



Majesta Black
Primer: 1500



Valencia Ivory
Primer: 3010-3D



Yorkstone
Primer: 1013-1L



Lincoln Limestone
Primer: 1500



Formenterra
Primer: Q-851



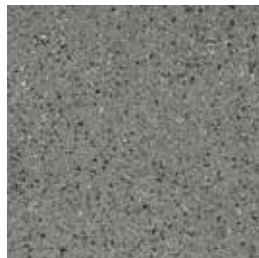
Feldspar
Primer: Q-851



San Augustine
Primer: 2009-1L



Dionysus Dark
Primer: Q-851



Dramas Grey
Primer: 1013-1L



Augusta White
Primer: 1004-3D



What is Durex® Century Stone?

Durex® Century Stone is a high quality architectural finish inspired by nature. Coming from the Durex® New Generation finishes line, Durex® Century Stone is formulated with natural multi-coloured decorative aggregates with added Mica flakes in a high-quality clear resin to yield a finish reminiscent of cut granite and stone.

Why use Durex® Century Stone?

Outstanding aesthetics. Durex® Century Stone delivers a unique, high-end finish that truly brings buildings to life. Whether you are building a multi-storey complex or putting the finishing touches on your dream home, look to Durex® Century Stone to set your building apart.

Where to use Durex® Century Stone?

Durex® Century Stone is the finishing touch of a wall assembly that has been thoroughly engineered, stringently tested and approved by independent laboratories to give you a cladding that has been proven to perform in harsh environments all over the world. Whether going directly over a surface or as part of a moisture managed Durex® Insulated Wall System, contact your Durabond Representative or visit www.durabond.com to discover the Durex® Wall System advantage.



Head Office

55 Underwriters Road
Toronto, ON M1R 3B4
T (416) 759-4474
F (416) 759-4470

Mississauga Office

6178 Netherhart Rd
Mississauga, ON L5T 1B7
T (905) 565-9283
F (905) 565-9365

Western Canada Office

14345-120th Avenue
Edmonton, AB T5L 2R8
T (780) 451-6364
F (780) 453-9056

General Inquiries

T 1 877 387-2266
E info@durabond.com
W www.durabond.com