

SEAMLESS & DECORATIVE FLOOR SYSTEMS

# Dur-A-Comfort

ERGONOMIC & SEAMLESS RESILIENT FLOORING



**DURabond**



## A beautiful choice from start to finish

Each and every professional at Durabond is dedicated to one single purpose: to ensure your building outperforms. It is why we go above and beyond to simply provide outstanding trusted products.

# Durex<sup>®</sup> Ergonomic Floor Systems

Health and Care Sector Protective Flooring

## What are “Dur-A-Comfort” Floors?

Hospital and healthcare infrastructure has a wide range of specific requirements, depending on the application. Hardly any other sector poses such stringent performance requirements as healthcare.

Dur-A-Comfort Flooring is not made from epoxy or polyurethane petroleum, but made from natural products which are much cleaner, safer and better for the environment. Ergonomic flooring systems can be adapted to individual requirements using additives or special top coats.

## Applications of Dur-A-Comfort

- Reception and administrative areas
- Lounges, patient and examination rooms
- Intensive care units and laboratories
- Sanitary facilities and therapeutic baths
- Physiotherapy rooms and gyms
- Industrial kitchens
- Service corridors and storage areas
- Laundries

## Benefits of Dur-A-Comfort

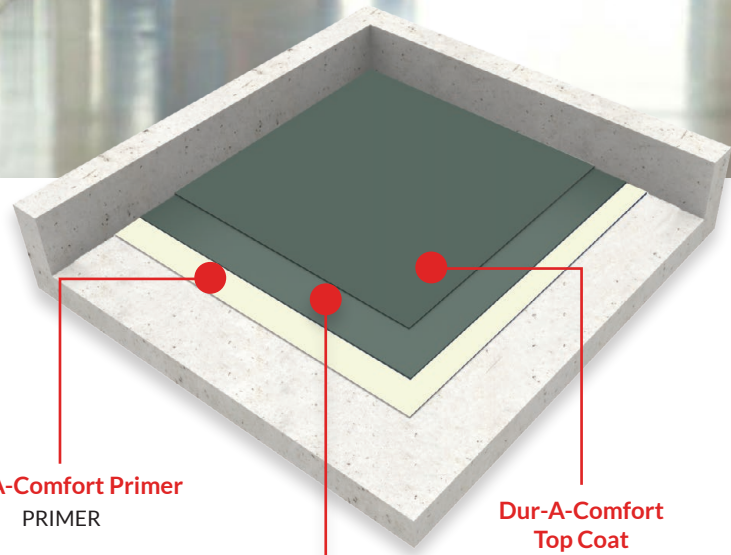
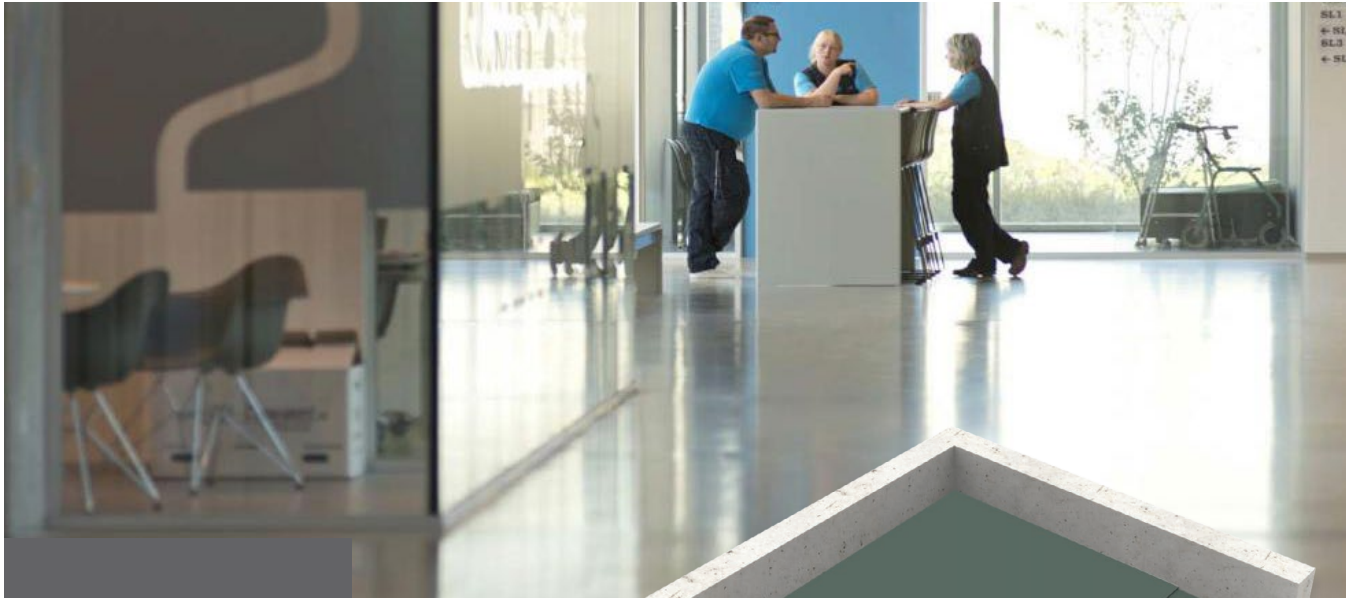
- Anti-microbial
- Anti-slip option available
- Chemical resistant
- Shock and impact resistant
- Extremely durable
- Completely waterproof
- Soundproof and noise dampening
- Low VOC during installation
- Fast curing
- Heat resistant





# Durex® Dur-A-Comfort REG

Ergonomic polyurethane floor system (3mm)



Dur-A-Comfort Primer  
PRIMER

Dur-A-Comfort  
Self Leveling  
INTERMEDIATE COAT

Dur-A-Comfort  
Top Coat  
TOP COAT X2

## NEW

### Ergonomic and Economical Comfort Floor

Durex® Dur-A-Comfort REG is a seamless, 3mm thick, polyurethane-based ergonomic comfort floor system that features a stand-alone 3mm wear-resistant layer for enhanced durability and point load resistance.

#### IDEAL USE

Durex® Dur-A-Comfort REG System is used as a decorative and protective ergonomic flooring system for dry areas that will be exposed to higher traffic where sound absorption is not as critical. It is best used for institutional, commercial, and retail flooring applications.

Laboratories and Hospital Main Corridors (dry areas)

Retail, Office and Commercial Applications

Recreational Facilities

Public Institutions and Buildings

#### FEATURES

Excellent chemical resistance

Easy to install, clean, and maintain

Long-term service life and easily repaired

Thin, lightweight, easily upturned to create curbs and containment areas

Does not support the growth of fungus/bacteria

CFIA approved and USDA accepted

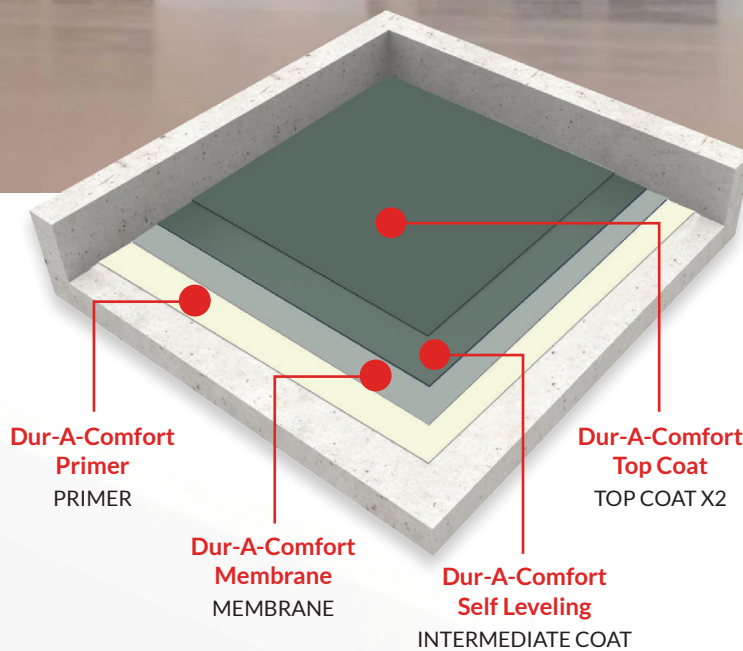
#### COLOUR AVAILABILITY

Tinted (Any Colour)

Chip Flakes

# Durex® Dur-A-Comfort ERGO

Ergonomic, sound absorbing, polyurethane system (4mm)



## NEW Economical Sound Absorbing Comfort Floor

Durex® Dur-A-Comfort ERGO is a seamless, 5mm thick polyurethane-based ergonomic, sound-absorbing floor system featuring a 2mm shock-absorbing membrane for user comfort and sound absorption.

### IDEAL USE

Durex® Dur-A-Comfort ERGO System is ideal for dry areas that will be exposed to higher traffic where sound absorption and user comfort are desired. It is best used for applications where a seamless flooring system with sound-deadening properties is required.

Laboratories and Hospital Main Corridors (dry areas)

Retail and Commercial Applications

Recreational Facilities

Public Institutions and Offices

### FEATURES

Soft 2mm membrane; noise reduction

Easy to install, clean, and maintain

Long-term service life and easily repaired

Thin, lightweight, easily upturned to create curbs and containment areas

Does not support the growth of fungus/bacteria

CFIA approved and USDA accepted

### COLOUR AVAILABILITY

Tinted (Any Colour)

Chip Flakes

# Durex® Dur-A-Comfort ERGO SD

Ergonomic, sound absorbing, polyurethane system (6 mm)



**Dur-A-Comfort  
Primer**  
PRIMER

**Dur-A-Comfort  
Membrane**  
MEMBRANE

**Dur-A-Comfort  
Self Leveling**  
INTERMEDIATE COAT

**Dur-A-Comfort  
Top Coat**  
TOP COAT

## NEW

### Enhanced Comfort, Shock and Sound Absorbing

Durex® Dur-A-Comfort ERGO SD is a seamless, 6mm thick polyurethane-based ergonomic, sound-absorbing comfort floor system that features an absorbing 4mm shock-absorbing membrane for enhanced user comfort and excellent sound absorption.

#### IDEAL USE

Durex® Dur-A-Comfort ERGO SD System is used as a decorative and protective ergonomic flooring system for dry areas where enhanced sound absorption and additional comfort are desired

Laboratories, Hospital Main Corridors (dry areas), Operating Rooms

Long Term Care Facilities

Children Day Care Centres, Public Institutions and Buildings

#### FEATURES

4mm thick membrane for enhanced noise reduction & ergonomics

Easy to install, clean, and maintain

Long-term service life and easily repaired

Thin, lightweight, easily upturned to create curbs and containment areas

Does not support the growth of fungus/ bacteria

CFIA approved and USDA accepted

#### COLOUR AVAILABILITY

Tinted (Any Colour)

Chip Flakes



# Durex® Dur-A-Comfort SPORT

Soft, self leveling, polurethane sports floor (8 mm)



**Dur-A-Comfort Primer**  
PRIMER

**Dur-A-Comfort Membrane**  
MEMBRANE

**Dur-A-Comfort Self Leveling**  
INTERMEDIATE COAT

**Dur-A-Comfort Top Coat**  
TOP COAT X2



**NEW**

## Elastic and Durable Comfort Sport Floor

Durex® Dur-A-Comfort SPORT is a seamless, 8mm thick, polyurethane-based soft ergonomic and elastic sports floor system featuring a 6mm membrane designed specifically for sport court applications.

### IDEAL USE

Durex® Dur-A-Comfort SPORT is a seamless, 8mm thick, polyurethane-based soft ergonomic and elastic sports floor system featuring a 6mm membrane designed for sport court applications.

Multi-Use Sport Court Applications & Gymnasiums

Child Care Centres & Operating Theatres

Public institutions and buildings

### FEATURES

6mm thick membrane - enhanced vertical deformation & ergonomics

Easy to install, clean, and maintain

Long-term service life and easily repaired

High performance, aesthetically pleasing, durable finish

Does not support the growth of fungus/ bacteria

CFIA approved and USDA accepted

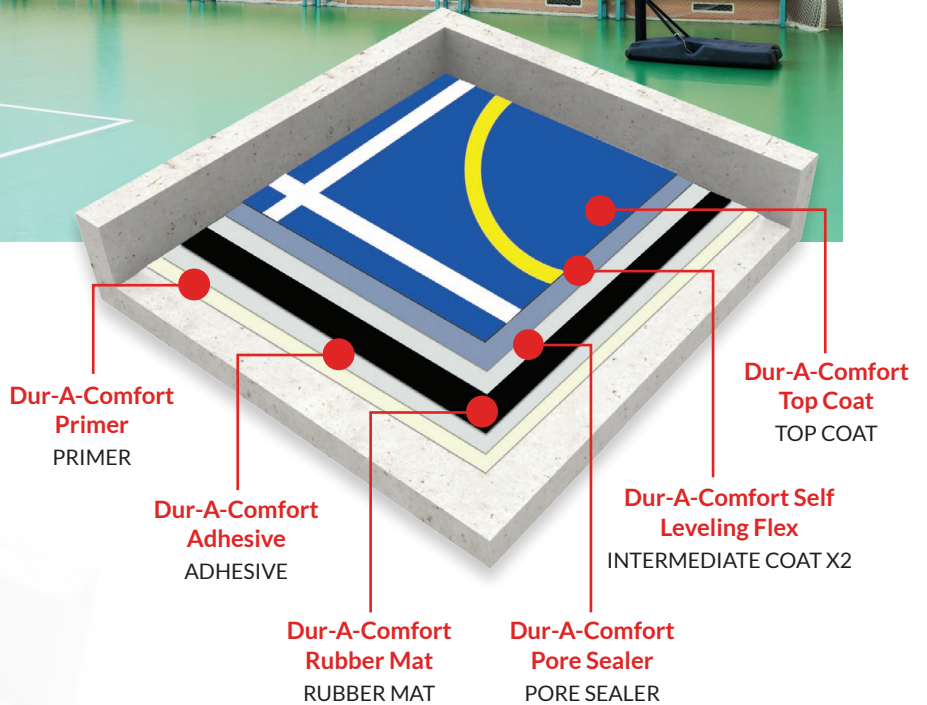
### COLOUR AVAILABILITY

Tinted (Any Colour)

Chip Flakes

# Durex® Dur-A-Comfort SUPER SPORT

Super soft, self leveling, polyurethane sports floor with rubber mat (10mm)



**NEW**

## Elastic and Durable Comfort Sport Floor

Durex® Dur-A-Comfort SUPER SPORT is a seamless, 10mm thick, polyurethane & rubber mat-based soft ergonomic and elastic sports floor system featuring a 6mm rubber mat. Durex® Dur-A-Comfort SUPER SPORT offers high levels of shock absorption and delivers player safety levels with excellent durability.

### IDEAL USE

Durex® Dur-A-Comfort SUPER SPORT is used as a shock-absorbing, multi-purpose sports flooring system for indoor sports courts.

Sport & Fitness Facilities

Schools Indoor Play Areas and Gymnasiums

Recreation and Dance Halls

Day Care Centers

### FEATURES

6mm thick rubber mat - enhanced comfort and point-elasticity

Customizable line marking and logos

Easy to install, clean, and maintain

Long-term service life and easily repaired

High performance, aesthetically pleasing, durable finish

Does not support the growth of fungus/ bacteria

CFIA approved and USDA accepted

### COLOUR AVAILABILITY

Tinted (Any Colour)

Chip Flakes



# Durex® Dur-A-Comfort System & Components

REG

COMPONENT	PRODUCT	DFT	COVERAGE	APPLICATION TEMPERATURE
Primer	Dur-A-Comfort Primer	8 mils	200 ft <sup>2</sup> /gal	10°C to 30°C
Intermediate Coat	Dur-A-Comfort Self Leveling	120 mils (3 mm)	45 ft <sup>2</sup> /kit	10°C to 30°C
Top Coat x2	Dur-A-Comfort Top Coat	5 mils	320 ft <sup>2</sup> /gal	10°C to 30°C

ERGO

COMPONENT	PRODUCT	DFT	COVERAGE	APPLICATION TEMPERATURE
Primer	Dur-A-Comfort Primer	8 mils	200 ft <sup>2</sup> /gal	10°C to 30°C
Membrane	Dur-A-Comfort Membrane	2 mm (80 mils)	90 ft <sup>2</sup> /kit	10°C to 30°C
Intermediate Coat	Dur-A-Comfort Self Leveling	2 mm (80 mils)	70 ft <sup>2</sup> /kit	10°C to 30°C
Top Coat x2	Dur-A-Comfort Top Coat	5 mils	320 ft <sup>2</sup> /gal	10°C to 30°C

ERGO SD

COMPONENT	PRODUCT	DFT	COVERAGE	APPLICATION TEMPERATURE
Primer	Dur-A-Comfort Primer	8 mils	200 ft <sup>2</sup> /gal	10°C to 30°C
Membrane	Dur-A-Comfort Membrane	4 mm (160 mils)	47 ft <sup>2</sup> /kit	10°C to 30°C
Intermediate Coat	Dur-A-Comfort Self Leveling	2 mm (80 mils)	70 ft <sup>2</sup> /kit	10°C to 30°C
Top Coat	Dur-A-Comfort Top Coat	5 mils	320 ft <sup>2</sup> /gal	10°C to 30°C

SPORT

COMPONENT	PRODUCT	DFT	COVERAGE	APPLICATION TEMPERATURE
Primer	Dur-A-Comfort Primer	8 mils	200 ft <sup>2</sup> /gal	10°C to 30°C
Membrane	Dur-A-Comfort Membrane	6mm (240 mils)	32 ft <sup>2</sup> /kit	10°C to 30°C
Intermediate Coat	Dur-A-Comfort Self Leveling	2 mm (80 mils)	70 ft <sup>2</sup> /kit	10°C to 30°C
Top Coat x2	Dur-A-Comfort Top Coat	5 mils	320 ft <sup>2</sup> /gal	10°C to 30°C

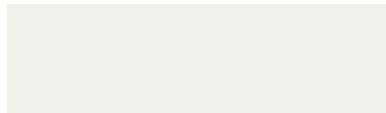
SUPER SPORT

COMPONENT	PRODUCT	DFT	COVERAGE	APPLICATION TEMPERATURE
Primer	Dur-A-Comfort Primer	8 mils	200 ft <sup>2</sup> /gal	10°C to 30°C
Adhesive	Dur-A-Comfort Adhesive	-	100 ft <sup>2</sup> /gal	10°C to 30°C
Rubber Mat	Dur-A-Comfort Rubber Mat	240 mils (6mm) or 394 mils (10mm)	Roll	10°C to 30°C
Pore Sealer	Dur-A-Comfort Pore Sealer	10 mils	160 ft <sup>2</sup> /gal	10°C to 30°C
Intermediate Coat x2	Dur-A-Comfort Self Leveling Flex	60 mils (1.5mm)	26 ft <sup>2</sup> /gal	10°C to 30°C
Top Coat	Dur-A-Comfort Top Coat	5 mils	320 ft <sup>2</sup> /gal	10°C to 30°C

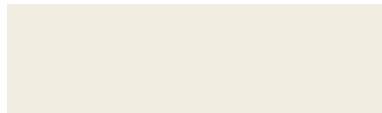
# Dur-A-Comfort Standard Colours

Dur-A-Comfort is available in 24 Standard Colours that are compatible with institutional and healthcare environments. Our standard colours portray the sense of cleanliness, serenity, and calm that is expected of highly professional environments.

Custom colours available upon request.



TRAFFIC WHITE - RAL 9016



PURE WHITE - RAL 9010



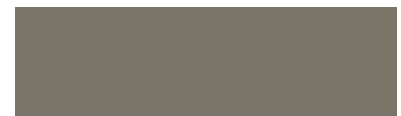
OYSTER WHITE - RAL 1013



IVORY WHITE - RAL 1015



PEBBLE GREY - RAL 7032



MOSS GREY - RAL 7003



SAFFRON YELLOW - RAL 1017



SALMON ORANGE - RAL 2012



LIGHT PINK - RAL 3015



PEARL ORANGE - RAL 2013



RUBY RED - RAL 3003



CHESTNUT BROWN- RAL 8015



PEARL VIOLET - RAL 4011



PEARL BLACKBERRY - RAL 4012



VIOLET BLUE - RAL 5000



PIGEON BLUE - RAL 5014



DISTANT BLUE - RAL 5023



GRAPHITE GREY - RAL 7026



PATINA GREEN - RAL 6000



TURQUOISE GREEN - RAL 6016



PINE GREEN - RAL 6028



SIGNAL GREY - RAL 7004



MOUSE GREY - RAL 7005



TRAFFIC GREY - RAL 7043

*Printed samples represent actual finish colours as closely as possible. Colour appearance may vary by texture, lighting and method of application. Always request a textured sample before ordering.*

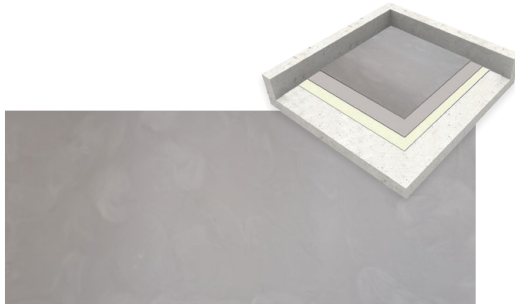
INTRODUCING

# Durex® DecoArt



## Tailored style meets unmatched comfort

Step into a world where comfort seamlessly merges with custom design aesthetics, introducing our latest line of decorative floor finishes. Crafted with meticulous attention to detail, our floors not only elevate the ambiance of any space but also provide unparalleled protection and durability. Engineered to resist chemicals and withstand the test of time, each finish is a testament to quality craftsmanship and timeless appeal.



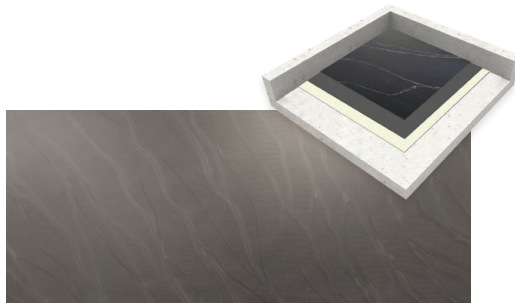
### CEMENTTECH

Decorative cement-like finish



### GRANITECH

Decorative, epoxy, granite-like finish



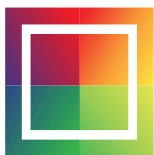
### MARBLETECH

Resinous, seamless, marble-like finish



### CANVAS

Custom finish designed by applicator



## Custom Colours Available

Durex® Dur-A-Comfort and DecoArt Finishes can be delivered in any colour so that you, as the architect or builder, can let the floor contribute to the overall design of the building.

### COLOUR GUIDE RESOURCES

[Durabond Colour Guide](#) »

[Protective Coatings Colour Guide](#) »

### NEED SUPPORT?

Contact your local Durabond help desk or sales representative. Our team are experts in the technical and design features of our systems and products.

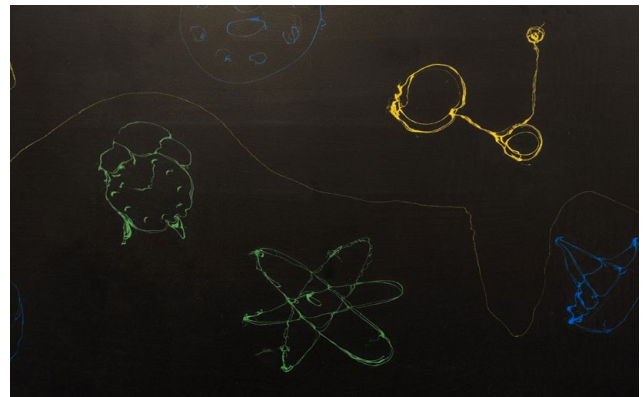
Our Team can even create custom solutions to your most specific requirements.



# Durex® DecoArt Canvas

Durex® Canvas for Dur-A-Comfort Floors is a decorative finish that allows for unparalleled creative freedom for Architects and Designers. The design or artwork of the finish can be styled as a pattern or freehanded by the Designer to create fully custom, one-of-kind aesthetic. We work closely with the Architect or Designer to ensure the design results as intended during the application and finish process.

**UNPARALLELED  
CREATIVE EXPRESSION  
WITH DECOART CANVAS**



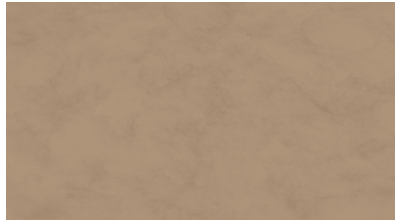
*Printed samples represent actual finish colours as closely as possible. Colour appearance may vary by texture, lighting and method of application. Always request a textured sample before ordering.*

# Durex® DecoArt Cementech

Durex® DecoArt Cementech is a continuous, cement-like and polished covering which offers an excellent level of adhesion on different surfaces to achieve an aesthetic change in your bathroom, kitchen, or inside or outside of your house, as well as in offices, businesses or large stores. It is one of the most complete and sought after coverings for achieving areas with a suggestive, personal and distinctive touch in their design.



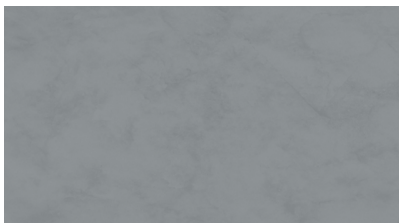
DESERT STONE



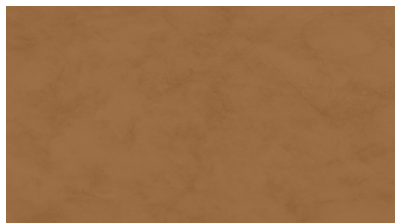
POTTER'S CLAY



ARCTIC ICE



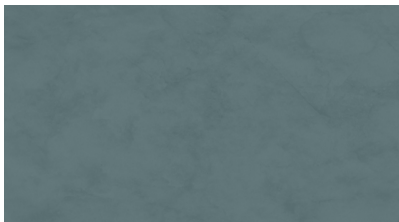
GRAY FOG



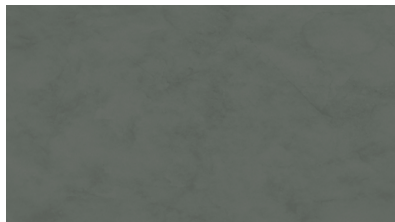
ANCIENT AMBER



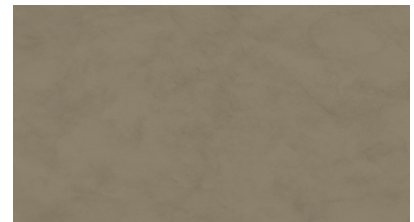
DEEP SEA



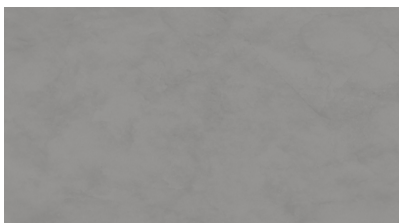
SUCCULENT BLOOM



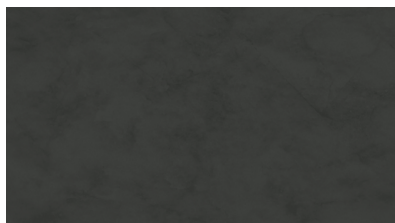
OBELISK STONE



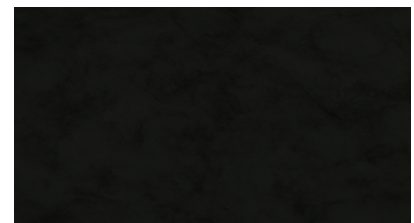
SAND STONE



NETHERHART GRAY



GRAPHITE



BLACK

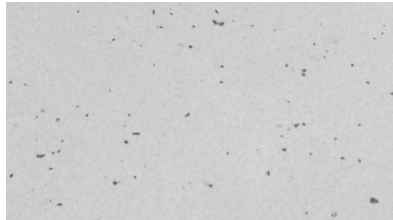
*Printed samples represent actual finish colours as closely as possible. Colour appearance may vary by texture, lighting and method of application. Always request a textured sample before ordering.*

# Durex® DecoArt Granitech

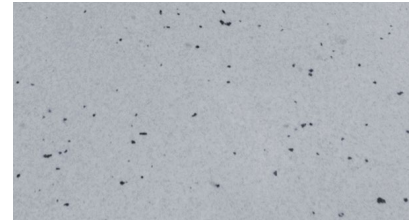
Durex® Granitech is a unique liquid-applied decorative epoxy floor system. It is easily installed as a three-step system to produce a tough durable multi-coloured granite-like finish. Granitech incorporates a coloured epoxy-based primer, a thixotropic multi-coloured coating system with a clear abrasion-resistant topcoat sealer to yield a long-wearing decorative granite-look floor.



DESERT



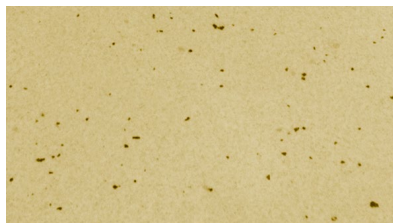
CLASSIC



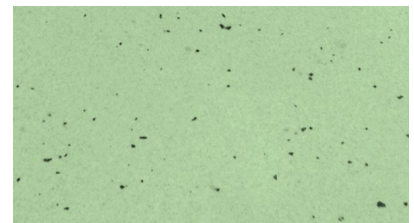
HIERRO



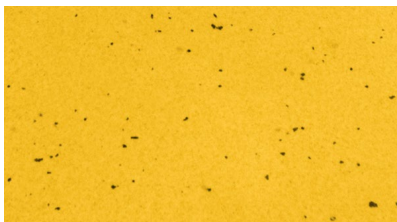
ROYAL RED



BEACH SAND



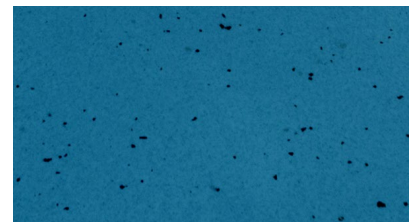
APPLE GREEN



PEACH



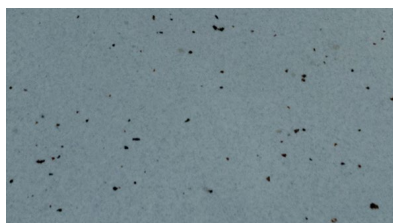
CINNAMON



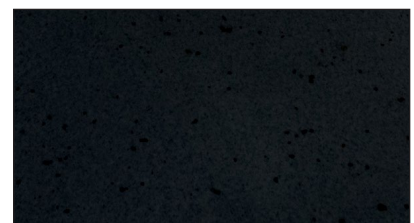
LIGHT BLUE



NORTH SEA



CONTRAST



BLACK/WHITE

*Printed samples represent actual finish colours as closely as possible. Colour appearance may vary by texture, lighting and method of application. Always request a textured sample before ordering.*



# Durex® DecoArt Marbletech

Durex® Marbletech for Dur-A-Comfort Floors is a decorative finish for long-term, low maintenance floors in high traffic healthcare environments, hospitals, residential, and office areas. Veining and colours can be customized as desired. Durex® Marbletech is part of the Durex® Dur-A-Comfort ergonomic floor system that features a stand-alone wear-resistant layer for enhanced durability and point load resistance.



DESERT STONE



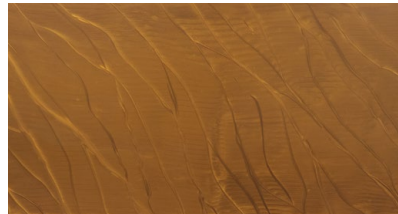
POTTER'S CLAY



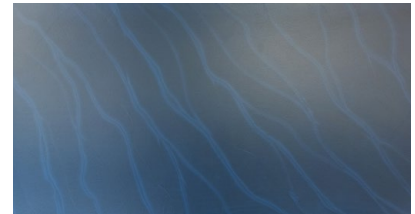
ARCTIC ICE



GRAY FOG



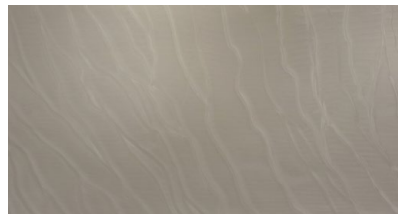
ANCIENT AMBER



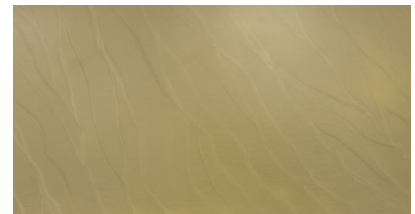
DEEP SEA



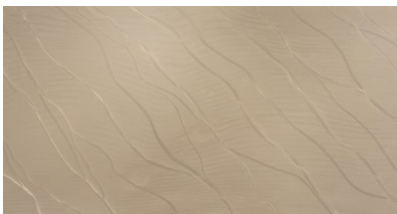
SUCCULENT BLOOM



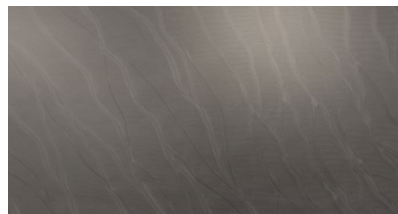
OBELISK STONE



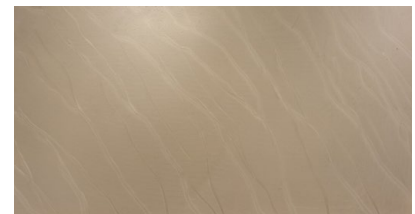
SAND STONE



NETHERHART GRAY



GRAPHITE



CUSTOM BLEND |  
50% POTTERS CLAY + 50% ARCTIC ICE

*Printed samples represent actual finish colours as closely as possible. Colour appearance may vary by texture, lighting and method of application. Always request a textured sample before ordering.*



Protect. Enhance. Outperform.



The recommendations and information in this chart/document are for the application of Durex® products manufactured by Durabond, and are based on practical knowledge for general site conditions and uses. This chart is to be used as a reference guide only to identify and display the various products for general, non-site specific applications for a variety of installations. Differences in site conditions, preparations, materials are continuously variable and unknown.

As such, no warranty, guarantee or legal binding relationship is implied whatsoever with these products and systems and no guarantee can be made to their performance. In addition, preparation and condition of the substrate is of such utmost importance that a Durabond Technical Representative must be notified prior to installation of any of the aforementioned products and/or systems.

An installer must always prepare the surface to the recommendations found on the current data sheet of each product written and produced by Durabond Technical Coatings Limited. These data sheets can be obtained from Durabond's website, [www.durabond.com](http://www.durabond.com), or by contacting a Technical Sales Representative directly.

#### **TORONTO OFFICE**

55 Underwriters Road, Toronto, ON M1R 3B4  
T (416) 759-4474 | F (416) 759-4470

#### **MISSISSAUGA OFFICE**

6178 Netherhart Road, Mississauga, ON L5T 1B7  
T (905) 565-9283 | F (905) 565-9365

#### **WESTERN CANADA OFFICE**

14604 124 Ave NW, Edmonton, AB T5L 3B3  
T (780) 451-6364 | F (780) 453-9056

#### **TOLL FREE**

TF 1 877 387-2266 | E [info@durabond.com](mailto:info@durabond.com)

**[durabond.com](http://durabond.com)**