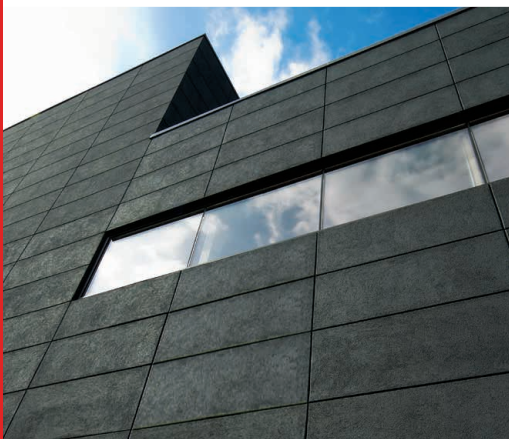


**Durex.**

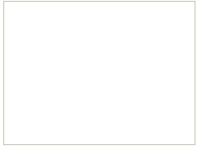
# Colour Selection Guide



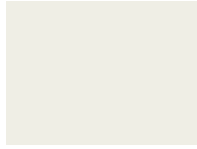
**DURAbond** 

Protect. Enhance. Outperform.

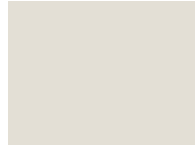
# Durex® Classics



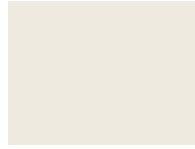
C-101  
White



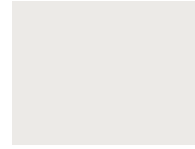
C-102  
White Dove



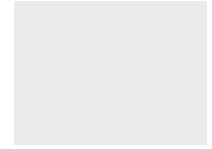
C-103  
Classic Gray



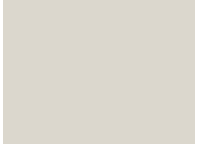
C-104  
Ivory White



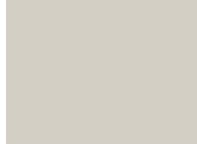
C-105  
Winter White



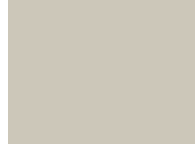
C-106  
Misty Gray



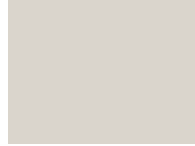
C-107  
Balboa Mist



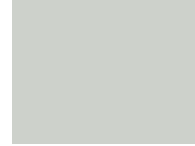
C-108  
Collingwood



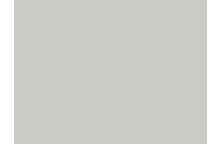
C-109  
Natural Clay



C-110  
Precast



C-111  
Cliffside Gray



C-112  
Stonington Gray



C-113  
Dufferin Terrace



C-114  
Thunder



C-115  
Ashley Gray



C-116  
Formed Cement



C-117  
Coventry Gray



C-118  
Cement Gray



C-119  
English Manor



C-120  
Briarwood



C-121  
Jockey Hollow



C-122  
Platinum Gray



C-123  
Chelsea Gray



C-124  
Asphalt



C-125  
Stanley Park



C-126  
Woodland



C-127  
Sussex Green



C-128  
Kendall Charcoal



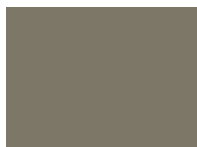
C-129  
Charcoal Slate



C-130  
Sharkskin



C-131  
Copley Gray



C-132  
Gloucester Sage



C-133  
Stampede



C-134  
Overcoat



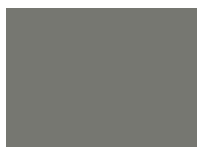
C-135  
Black Licorice



C-136  
Iron Stone



C-137  
Owl Grey



C-138  
Amherst Gray



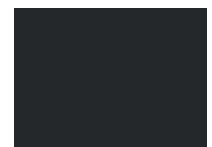
C-139  
Dakota Woods Green



C-140  
Raccoon Fur



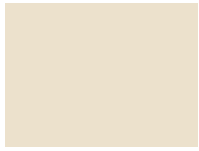
C-141  
Wrought Iron



C-142  
Black

Colour Chip samples represent actual finish colours as closely as possible. Colour appearance may vary by texture, lighting and method of application. Always request a textured sample before ordering. Custom colour matching available, ask your Durabond representative for more information.

# Durex® Earths



E-201  
White Dawn



E-202  
Burma Beige



E-203  
Carlisle Cream



E-204  
Grey Frost



E-205  
Lambs Skin



E-206  
Pearl Grey



E-207  
Delaware Putty



E-208  
Turret



E-209  
Tudor Beige



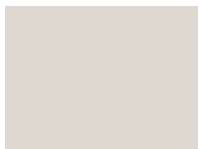
E-210  
Winter Willow



E-211  
Cromwell Grey



E-212  
Buff Grey



E-213  
Neutral Sand



E-214  
Zinc



E-215  
Putty



E-216  
Hampshire Grey



E-217  
Toasted Grey



E-218  
River Sand



E-219  
Seattle Beige



E-220  
Serene



E-221  
Nomads Trail



E-222  
Simple Cream



E-223  
Grey Mirage



E-224  
Country



E-225  
Miadoro



E-226  
Tiramisu



E-227  
Sand Stone



E-228  
Rockport Grey



E-229  
Somerset Toupee



E-230  
Slate Grey



E-231  
Desert Cave



E-232  
Earth Moss



E-233  
Coffee Bean



E-234  
Richmond Grey



E-235  
Elk Tan



E-236  
Sage Brush



E-237  
Steel Harbour



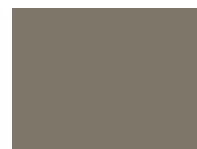
E-238  
Venture



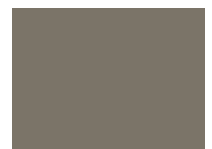
E-239  
Thatched Cottage



E-240  
Wethersfield



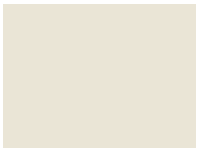
E-241  
Cameroon Grey



E-242  
Calm Matter

Durex® Architectural Finish installed on the same wall area should be from the same batch. Avoid applying Durex® Architectural Finishes from different batches on adjacent areas to prevent shade variations that may occur. Avoid applying material in rapidly drying conditions (sunlight, high wind), or next to previously applied Durex® Architectural Finishes.

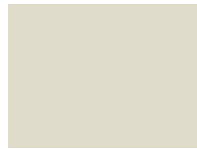
# Durex® Neutrals



N-301  
White Wash



N-302  
Smoke



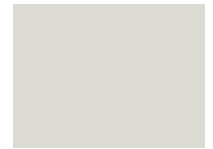
N-303  
Grey Mist



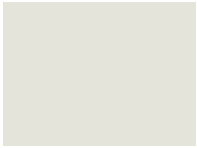
N-304  
Winter



N-305  
Seville Sky



N-306  
Lacey Pearl



N-307  
Alpine White



N-308  
Full Moon



N-309  
River Rock



N-310  
Nickel



N-311  
Silver Streak



N-312  
French Silver



N-313  
Edgecomb Grey



N-314  
October Grey



N-315  
Copeland Grey



N-316  
Harbour Grey



N-317  
Steel Grey



N-318  
Steam Boat



N-319  
Melton Wool



N-320  
Silver Lining



N-321  
Silver Fox



N-322  
Sea Spray



N-323  
Winter Lake



N-324  
Gypsum



N-325  
Washed Cliff



N-326  
Middle Stone



N-327  
Manor Grey



N-328  
Limestone Grey



N-329  
Crownsville



N-330  
Revere Pewter



N-331  
St. Peter Sage



N-332  
Gray Linen



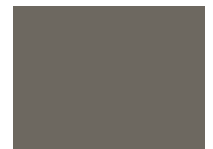
N-333  
Mossy Oak



N-334  
Pebble Beach



N-335  
Toulouse Grey



N-336  
Abalone



N-337  
Cedar



N-338  
Clark Grey



N-339  
Camouflage



N-340  
Shadow



N-341  
Cool Steel



N-342  
Magnum

Durabond will not be responsible for batch to batch variations which can be affected by environmental or substrate conditions. Please contact your Durabond Representative for further information or suggestions.

# Durex® Spirited



S-401  
Buff Cream



S-402  
Western Flax



S-403  
Butter Cream



S-404  
Buckwheat



S-405  
Blush



S-406  
Cheyenne



S-407  
Camelot



S-408  
Smooth Pebble



S-409  
Seashell



S-410  
Gazelle



S-411  
Earthenware



S-412  
Bronze



S-413  
Ivory Fresco



S-414  
Sandy Beach



S-415  
Coastal Sand



S-416  
Terra Cotta



S-417  
Colonial Brick



S-418  
Gazpacho



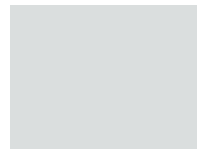
S-419  
Cabot Trail



S-420  
Timescape



S-421  
Durango



S-422  
Sky Scene



S-423  
Faded Denim



S-424  
Roof Slate



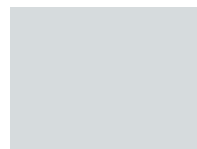
S-425  
Countryside



S-426  
Toronto Taupe



S-427  
Sand Dune



S-428  
Winter Rain



S-429  
Misty Cove



S-430  
North Sea



S-431  
Falcon's Leap



S-432  
Sassafras



S-433  
Falcon Brown



S-434  
Silver Cloud



S-435  
Weymouth Bay



S-436  
West Coast



S-437  
Italian Ochre



S-438  
Dutch Brown



S-439  
Banquet Brown



S-440  
Royalty



S-441  
Evening Dove



S-442  
Newburyport Blue



Durex® Kolor Gard Fade Resistant Technology is available as a roller applied topcoat or can be integrated into any Durex® Architectural Coating. It is recommended to be used for deep and mass tone colours including red, orange, blue, black, yellow, purple and violet.



Durex® **Classic Architectural Finishes** are our most popular and commonly used finishes. They offer timeless and classic designs.

Classic



**MARBLE COAT 1.5**

Our most popular texture, gives a coarse high-build finish with added depth of texture



**MARBLE COAT 1.0**

Another popular texture, a medium build finish for a slightly finer but deep look



**PEBBLEFLOAT**

A coarse, high build finish with uniform stone sizes for a pebble-like appearance



**SANDEX**

Finest float applied finish. Yields a fine, uniform pebble finish



**VENECIAN**

Medium build finish with added aggregate for a classic swirl look



**GRAFFIATO**

Coarse texture with added large aggregate for a classic finish



**STUCCO SPRAY**

Traditional and elegant spray applied finish ideal for coating large wall areas



**TRIM SPRAY**

Made with fine aggregates for mouldings and trims with superb hiding power



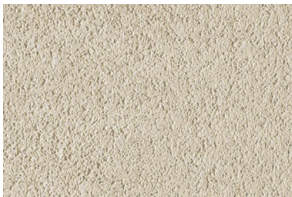
Durex® **Artisan Architectural Finishes** represents a range of aesthetic finishes that are enhanced by the artistry of the installer.

Artisan



**SANDSTONE\***

A very fine finish which gives a limestone appearance for a sharp, smooth, stone look



**RASATO\***

Fine, smooth finish for a uniform, classic texture



**RUSTICO\***

Medium finish offering a unique texture with a rustic look and feel



**ANTICO GLAZE\***

Translucent glaze that simulates a natural aging effect, for use over any texture



**PULL OFF**

Classic, old english, high build, pull off style finish



**FREESTYLE**

Free-hand applied, coarse finish, styled by the installer



**KNOCK DOWN**

Traditional, high build, knock down, textured finish



\*Large wall applications are to be combined with reveals or architectural breaks.



**Durex® Roller Applied Coatings** are a line of protective exterior coatings that are formulated to protect concrete and masonry structures while maintaining high levels of breathability.

**Roller Applied**



**BRUSH COAT**

Versatile, decorative coating with excellent permeability and water repellency



**ROLTEX**

High build textured roller applied coating with excellent hiding power



**DUR-X-CEL**

High-quality, smooth, protective coating also used to re-coat trowel applied finishes



**EMC**

Breathable, highly elastomeric acrylic coating with superb crack bridging capabilities



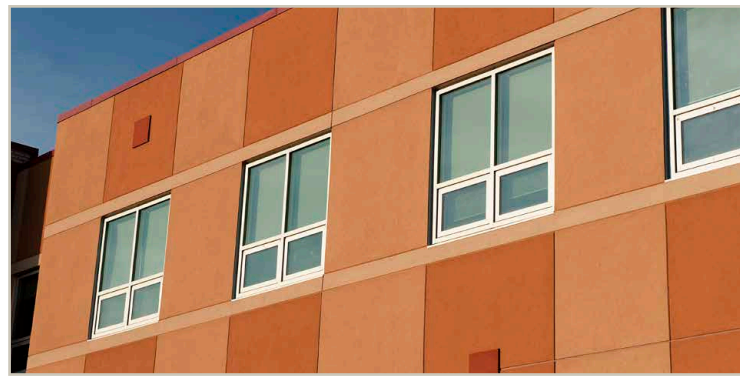
**ACROTEL EC-A**

Breathable elastomeric coating with Anti-Carbonation properties that protects concrete



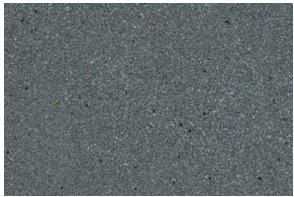
**ECTO-SIL**

Breathable, silicone based, elastomeric protective coating with excellent UV and weathering resistance



**Durex® Premium Architectural Finishes** are a line of specialty blended, highly decorative and unique architectural finishes comprised of coloured aggregates, quartz and other special minerals.

**Premium**



**CENTURY STONE**

Multi-dimensional finish inspired by marble and granite slabs for unparalleled elegance



**GRANITE**

Decorative coating consisting of coloured aggregates embedded in clear resin



**GEMSTONE**

Striking, multicoloured, quartz aggregate finish with mica flakes for a stone-like finish



**DUR-A-BRICK**

Unique, simulated brick finish with unlimited design possibilities



**Durex® ACR Finishes** are comprised of multiple custom layers to achieve heightened levels of aesthetics.

**ACR**



**SMOOTH METALLIC**

Flat, non-reflective, matte finish in a panel-like pattern



**TEXTURED METALLIC**

Reflective, sheen, metallic finish in a panel-like pattern



**WOOD GRAIN**

Wood grain finish inspired by nature in a panel-like pattern

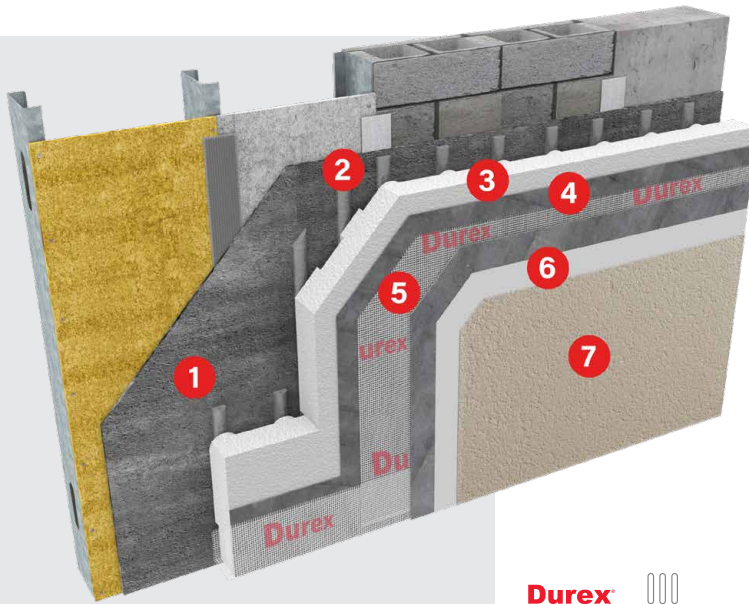
**REQUEST A CHART**

Premium and ACR Finishes have their own Colour Selection Charts.

Please ask your Durabond Representative for more details.

## Durex® Continuous Insulation Systems (EIFS)

Durex® Architectural Coatings are typically installed as the final decorative layer for Durex® Wall Systems.



1. **Durex** Water Resistant Barrier
2. **Durex** Insulation Adhesive
3. **Durex** Rigid Insulation
4. **Durex** Base Coat
5. **Durex** Reinforcing Fiberglass Mesh
6. **Durex** Primer
7. **Durex** Architectural Coating

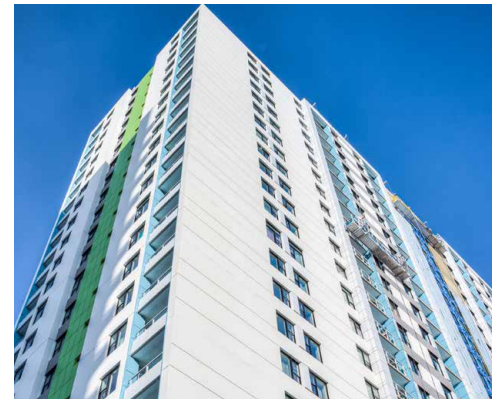
Durex® Continuous Insulation Systems are a line of CCMC Approved, Code Compliant, ULC Listed, Fire Rated, Moisture Managed, Exterior Insulation and Finishing Systems (EIFS) that provide continuous insulation of the building envelope.

Durex® Continuous Insulation Systems provide advanced drainage and accelerated drying of incidental moisture in the cavity wall while retaining maximum insulation value. They offer exceptional design flexibility for the discerning design professional.

### Additional Systems

- **Durex** Non-Combustible Insulated Systems
- **Durex** Non-Insulated Systems
- **Durex** Protective Wall Systems

**CCMC #13103-R**



## DURABOND <sup>50</sup> YEARS

For over 50 years Durabond Products Limited has delivered technically superior products and solutions to the construction industry through manufacturing high-quality, specialized Architectural Wall Coatings, Exterior Insulation and Finishing Systems (EIFS), Concrete Restoration Products and a wide range of related construction products to protect and enhance the building enclosure.

TESTED AND APPROVED BY



### TORONTO OFFICE

55 Underwriters Road  
Toronto, ON M1R 3B4  
T (416) 759-4474  
F (416) 759-4470

### MISSISSAUGA OFFICE

6178 Netherhart Road  
Mississauga, ON L5T 1B7  
T (905) 565-9283  
F (905) 565-9365

### WESTERN CANADA OFFICE

14604 124 Ave NW  
Edmonton, AB T5L 3B3  
T (780) 451-6364  
F (780) 453-9056

### TOLL FREE

TF 1 877 387-2266  
E info@durabond.com

**[durabond.com](http://durabond.com)**