



  
**element**  
BY WESTON

**Durex**

# GEMSTONE

*Inspired by Nature*

Protect. Enhance. Outperform.

## Durex® GEMSTONE PREMIUM FINISHES

Durex® Gemstone is a high build, multi-coloured, protective and decorative coating consisting of coloured aggregates and oversized mica flakes embedded in a clear, 100% acrylic resin. Its distinctive features allow the designer to create attractive and unique surfaces.

**Application:** Metal Trowel

**Coverage:** 11.1 m<sup>2</sup> (120 ft<sup>2</sup>/pail)

*Primer is required.*



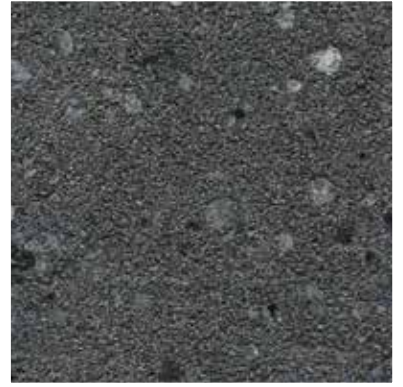
Printed samples represent actual finish colours as closely as possible. Colour appearance may vary by texture, lighting and method of application. Always request a textured sample before ordering.



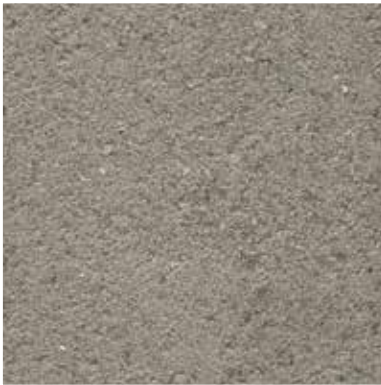
**Tuscan Heights**  
*Primer: 2013-2M*



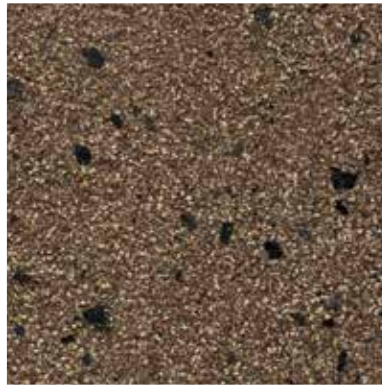
**Athabasca Sands**  
*Primer: 2019-1L*



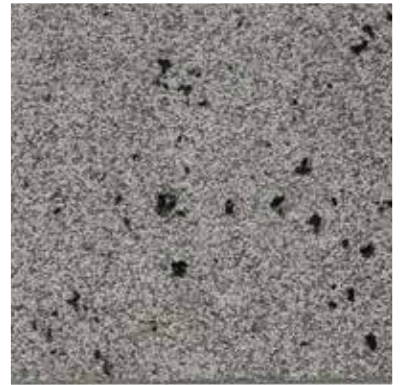
**Tambora Ash**  
*Primer: 2017-3D*



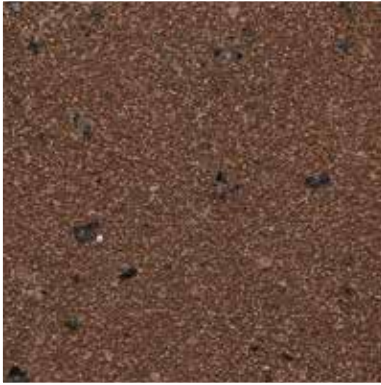
**Dolomite White**  
*Primer: 2015-1L*



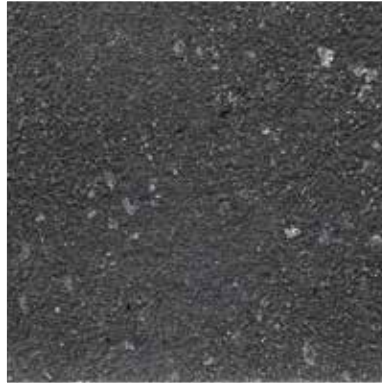
**Moroccan Hills**  
*Primer: 1003-3D*



**Stonehenge**  
*Primer: Q-851*



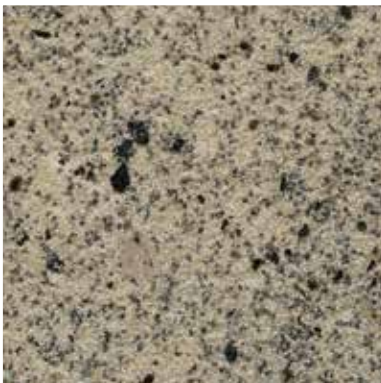
**Georgian Granite**  
*Primer: 3010-3D*



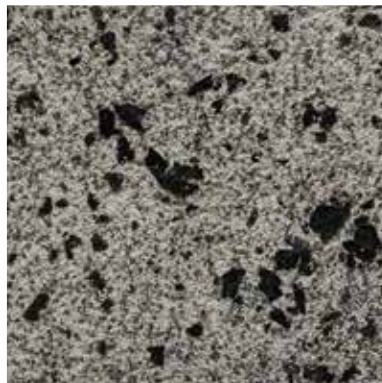
**Black Maine**  
*Primer: 1500*



**Tera Serengeti**  
*Primer: 1004-3D*



**Riversand**  
*Primer: 1013-1L*



**Nordic Pearl**  
*Primer: 2009-1L*



**Gibraltar Stone**  
*Primer: Q-851*



### What is Durex® Gemstone?

Durex® Gemstone is a high quality architectural finish inspired by nature. Coming from the Durex® New Generation finishes line, Durex® Gemstone is formulated with natural multi-coloured decorative aggregates with added Mica flakes in a high-quality clear resin to yield a finish reminiscent of cut granite and stone.

### Why use Durex® Gemstone?

Outstanding aesthetics. Durex® Gemstone delivers a unique, high-end finish that truly brings buildings to life. Whether you are building a multi-storey complex or putting the finishing touches on your dream home, look to Durex® Gemstone to set your building apart.

### Where to use Durex® Gemstone?

Durex® Gemstone is the finishing touch of a wall assembly that has been thoroughly engineered, stringently tested and approved by independent laboratories to give you a cladding that has been proven to perform in harsh environments all over the world. Whether going directly over a surface or as part of a moisture managed Durex® Insulated Wall System, contact your Durabond Representative or visit [www.durabond.com](http://www.durabond.com) to discover the Durex® Wall System advantage.



#### Head Office

55 Underwriters Road  
Toronto, ON M1R 3B4  
**T** (416) 759-4474  
**F** (416) 759-4470

#### Mississauga Office

6178 Netherhart Rd  
Mississauga, ON L5T 1B4  
**T** (905) 565-9283  
**F** (905) 565-9365

#### Western Canada Office

14345-120th Avenue  
Edmonton, AB T5L 2R8  
**T** (780) 451-6364  
**F** (780) 453-9056

#### General Inquiries

**T** 1 877 387-2266  
**E** [info@durabond.com](mailto:info@durabond.com)  
**W** [www.durabond.com](http://www.durabond.com)